

From the Department of Clinical Science and Education,  
Södersjukhuset  
Karolinska Institutet, Stockholm, Sweden

# **ANTERIOR CRUCIATE LIGAMENT INJURIES – STUDIES ON THE ADVERSE EVENTS AND LONG-TERM OUTCOMES**

Osama Omar



**Karolinska  
Institutet**

Stockholm 2023

All previously published papers were reproduced with permission from the publisher.

Published by Karolinska Institutet.

Printed by Universitetservice US-AB, 2023

© Osama Omar, 2023

ISBN 978-91-8017-197-7

Cover image: View from the orthopedic surgery department at Södersjukhuset

# Anterior cruciate ligament injuries - studies on the adverse events and long-term outcomes

## Thesis for Doctoral Degree (Ph.D.)

By

**Osama Omar**

The thesis will be defended in public at Aulan, Södersjukhuset, Sjukhusbacken 10, on January 19<sup>th</sup>, 2024 at 09:00

**Principal Supervisor:**

Associate Professor Anders Stålmán  
Karolinska Institutet  
Department of Molecular Medicine and Surgery  
Stockholm Sports Trauma Research Center

**Co-supervisor(s):**

Associate Professor Björn Barenius  
Karolinska Institutet  
Department of Clinical Science and Education,  
Södersjukhuset  
Division of Orthopedics

Professor Karl Eriksson  
Karolinska Institutet  
Department of Department of Clinical Science and  
Education, Södersjukhuset  
Division of Orthopedics

**Opponent:**

Associate Professor Paul Neuman  
Lund University  
Department of Clinical and Molecular Osteoporosis  
Research  
Division of Orthopedics

**Examination Board:**

Professor Christer Rolf  
Karolinska Institutet  
Department of Clinical Science, Intervention and  
Technology  
Division of Orthopedics

Associate Professor Maria Cöster  
Lund University  
Department of Department of Clinical and Molecular  
Osteoporosis Research  
Division of Orthopedics

Professor Paul Ackerman  
Karolinska Institutet  
Department of Molecular Medicine and Surgery  
Stockholm Sports Trauma Research Center



“Mistakes are portals of discovery“

James Joyce



## Popular science summary of the thesis

The anterior cruciate ligament (ACL) is one of the important structures in the knee. It helps to keep the knee stable during physical activities like running, jumping and sporting. An ACL injury often happens during sports or activities that involve sudden stops, changing in directions or jumps. The most common sports where the ACL is injured in is football, handball and skiing.

A patient with a torn ACL can either be treated with physiotherapy aiming to strengthen the muscles around the knee or by surgery followed by physiotherapy. The recommended surgical option is ACL reconstruction (ACLR), where the surgeon uses a graft to replace the torn ligament. In Sweden, almost 4000 ACLRs take place each year.

This thesis focuses on the adverse events and long-term outcomes following an ACL injury.

Firstly, in order to identify the main adverse events regarding an ACL injury, the reasons for filing a compensation claim to the national insurance company (Löf) were investigated. Five hundred and thirty eligible claims were found in a 10-year period. Two thirds of the claims were accepted and the rest were rejected. The most common reasons for accepted claims were deep infections following ACLR, followed by surgical errors and delays in diagnosis and treatment.

Secondly, the consequences of deep infection following ACLR were investigated. Data from various national registries were used to identify the study participants. The outcome of surgery was evaluated using patients' questionnaires. The study showed that patients with deep infection have worse outcome and twice the risk of re-doing the surgery, compared to patients without infection.

Thirdly, the role of various infectious agents on the clinical presentation of deep infections were examined. The study showed variations in the duration between the surgery and the start of infection treatment and in the results of blood investigations that aid in monitoring the infection, depending on the causative infectious agent.

Lastly, the long-term results of early ACLR were investigated. The study showed that good outcome can be achieved when performing ACLR within 10 weeks after injury. However, there is a high risk of developing osteoarthritis after an ACL injury, and surgery does not seem to prevent that from happening.

## Abstract

The overall aims of this thesis were to identify the main adverse events after anterior cruciate ligament (ACL) injuries, to study the clinical presentation and the consequences of the adverse event (post-operative septic arthritis), and to report the long-term outcomes of patients who underwent acute anterior cruciate ligament reconstruction (ACLR) and those who underwent delayed ACLR.

Study I investigated the reasons behind compensation claims filed to the patient insurance company (Löf) by patients with ACL injuries from 2005 to 2014. A total of 530 eligible claims were identified. 352 claims (66%) were accepted and 178 rejected. The most common reasons for accepted claims included post-operative septic arthritis, followed by suboptimal surgery and delays in diagnosis and treatment.

Study II examined patient-reported outcomes and the 5-year risk of revision surgery for patients who suffered from septic arthritis after ACLR. Patients found in the Swedish National Knee Ligament Register (SNKLR) with a primary ACLR using a hamstring or patellar tendon (n=23,075) were included from 2006 to 2013. 268 patients with septic arthritis were found by linking data from SNKLR with data from the Swedish national board of health and welfare. The results showed that patients with septic arthritis had worse scores of Knee injury and Osteoarthritis Outcome Score (KOOS) and the European Quality of life Five Dimensions index (EQ-5D) at all follow-up occasions. Additionally, the 5-year risk of revision was almost twice as high for the septic arthritis patients.

Study III, a subgroup analysis was performed for 158 patients with septic arthritis identified in Study I. The aim was to describe the clinical characteristics of the common infectious agents that cause septic arthritis following ACLR, in order to provide better understanding of their impact on the clinical presentation of the disease, with the objective of improving the diagnostic process. Coagulase-negative Staphylococci were responsible for the majority of the infections (60%), followed by Staphylococcus aureus and Cutibacterium acnes. Patients infected with Staphylococcus aureus had the highest CRP levels, and the shortest duration from the time of ACLR to the first irrigation and debridement operation.

Study IV analyzed the long-term outcomes of acute ACLR and delayed ACLR. 70 patients were randomized between 2006 and 2013 into two groups: acute ACLR within 8 days after injury and delayed ACLR after normalized range of motion (ROM) within 6-10 weeks after injury. 53 patients (out of 70) participated in a long-term follow-up with an average of 13 years after surgery. Satisfactory knee function was observed in both groups. No differences between the groups were found in terms of ROM, anterior knee laxity or isokinetic knee strength tests. KOOS pain and symptoms scores were worse ( $p=0.019$ ,  $0.008$ ) for patients in the delayed group. 13 patients (30%) showed signs of OA in the index knee, compared to 4



patients (9%) in the contralateral knee. 10 patients (48%) in the delayed group showed signs of OA, compared to 3 patients (13%) in the acute group.

In conclusion, the most common reasons for accepted compensation claims after ACL injuries are post-operative septic arthritis, suboptimal surgery and delays in diagnosis and treatment. Patients with septic arthritis have poorer PROMs and higher 5-year risk of revision ACLR. Variations were observed in the clinical presentation of septic arthritis after ACLR depending on the causative infectious agent, with low-virulent agents being responsible for the majority of the infections. ACLR performed within 10 weeks after injury results in satisfactory long-term clinical and patient-reported outcomes but with an increased risk for osteoarthritis compared to the contralateral knee.

## List of scientific papers

This thesis is based on the following studies, referred to in the text by their Roman numerals.

**I. Compensation claims following anterior cruciate ligament injuries reported to the patient insurance company in Sweden in 2005-2014**

Osama Omar, Dzan Rizvanovic, Markus Waldén, Karl Eriksson, Björn Barenius, Anders Stålmán

Acta Orthopædica 93, 97–102. 2022/01/3

**II. Poorer patient-reported outcome and increased risk of revision at a five-year follow-up among patients with septic arthritis following anterior cruciate ligament reconstruction: a register-based cohort study of 23,075 primary anterior cruciate ligament reconstructions**

Jesper Kraus Schmitz, Osama Omar, Adam Nordkvist, Henrik Hedevik, Per-Mats Janarv, Anders Stålmán

Knee Surgery, Sports Traumatology, Arthroscopy 31, 4090-4089, 2023/07/03

**III. Variations in the clinical presentation of septic arthritis following anterior cruciate ligament reconstruction based on the causative infectious agent: Insights from a nationwide case-series of 158 patients**

Osama Omar, Jesper Kraus Schmitz, Karl Eriksson, Björn Barenius, Anders Stålmán

Submitted

**IV. Satisfactory long-term results with early anterior cruciate ligament reconstruction, but with an increased risk for osteoarthritis compared to the contralateral knee: A 13-year follow-up of a randomized controlled trial**

Osama Omar, Alexander Hallgren, Tobias Wörner, Anders Stålmán, Karl Eriksson, Björn Barenius

Manuscript

# Contents

1	Introduction and background .....	1
1.1	Anatomy of the ACL.....	1
1.2	Epidemiology of the ACL injury .....	2
1.3	Diagnosis of the ACL injury .....	2
1.4	Treatment of the ACL injury.....	4
1.4.1	Anterior cruciate ligament reconstruction (ACLR) .....	4
1.4.2	Timing of the surgery .....	4
1.5	Measuring the outcome of treatment of the ACL injury.....	6
1.5.1	Clinical assessment of knee function.....	6
1.5.2	Patient reported outcome measures (PROMs).....	7
1.5.3	Radiological assessment of osteoarthritis (OA).....	7
1.6	Adverse events following an ACL injury.....	8
1.6.1	Septic arthritis following ACLR.....	8
1.7	The patient insurance system in Sweden .....	9
1.8	Registers in Sweden .....	10
1.8.1	The personal identification number.....	10
1.8.2	The National Patient Register .....	10
1.8.3	The Swedish prescribed drug register .....	10
1.8.4	The Cause of Death register .....	11
1.8.5	Health Quality Registers .....	11
1.8.6	The Swedish National Knee Ligament Registry (SNKLR) .....	11
2	Research aims .....	13
3	Materials and methods.....	15
3.1	Ethical considerations.....	15
3.2	Identifying the adverse events (Study I) .....	15
3.3	The consequences of post-operative septic arthritis (Study II) .....	16
3.4	Microbiology and clinical presentation of septic arthritis (Study III) .....	17
3.5	The long-term outcome of early ACLR (Study IV) .....	19
3.6	Statistics.....	20
4	Results .....	23
4.1	Compensation claims related to an ACL injury.....	23
4.2	The impact of septic arthritis on the outcome of ACLR .....	24
4.3	Clinical characteristics of the infectious agents causing septic arthritis .....	26
4.4	The long-term results and consequences of early ACL reconstructions .....	28
5	Discussion .....	30
5.1	Utilizing compensation claims to study the adverse events .....	30
5.2	Evaluating the outcome of ACLR complicated by septic arthritis .....	31
5.3	Variations in the clinical presentation of septic arthritis .....	33

5.4	The ideal timing to perform ACLR.....	34
6	Conclusions .....	37
7	Points of perspective .....	38
7.1	Compensation claims and adverse events .....	38
7.2	Septic Arthritis.....	38
7.3	The ideal timing of ACLR .....	39
8	Acknowledgements .....	40
9	References.....	42

## List of abbreviations

ACL	Anterior cruciate ligament
ACLR	Anterior cruciate ligament reconstruction
ADL	Activity of daily life
AP	Anteroposterior
BMI	Body mass index
BPTB	Bone-patella tendon-bone
C.acnes	Cutibacterium acnes
CI	Confidence interval
CoNS	Coagulase-negative Staphylococci
EQ-5D	The European quality of life five dimension
I&D	Irrigation and debridement
ICD	International classification of diseases
IKDC	International knee documentation committee
KOOS	Knee injury and osteoarthritis outcome score
LSI	Limb symmetric index
MRI	Magnetic resonance imaging
OR	Odds ratio
PASS	Patient acceptable symptom state
PIN	Personal identification number
PL	Posterolateral
PROM	Patient reported outcome measure
ROM	Range of motion
S.aureus	Staphylococcus aureus
SD	Standard deviation
SNKLR	Swedish national knee ligament register
QoL	Quality of life



# 1 Introduction and background

## 1.1 Anatomy of the ACL

The knee joint is a hinge joint that consists of multiple structures that work together to provide movement and stability. The main articulation is between the femur and the tibia. The patella is a sesamoid bone that lies anteriorly and is attached to the quadriceps tendon and the patellar ligament and glides within the trochlea of the femur. The joint surfaces are covered with articular cartilage and the menisci serve as shock absorbers and play a role in the stability of the joint.

The stability of the knee is multifactorial. The anterior cruciate ligament (ACL) and the posterior cruciate ligament (PCL) help with sagittal stability, while the medial and lateral collateral ligaments help with side-to-side stability [94].

The ACL originates from the Intercondylar ridge of the eminences of the tibia and inserts to the medial wall of the lateral femur condyle. The attachments of the ACL are often called “footprints”. The ACL fibers are arranged in two bundles that are named for their relative attachment of the tibia: anteromedial (AM) and posterolateral (PL) [17, 32].

The length of the ACL has been estimated in the anatomical studies to be 31-38 mm and the width is 10-12 mm [85]. The blood supply of the ACL comes from the middle geniculate artery that originates from the popliteal artery [40]. The nerve supply comes from the posterior articular nerve which is a branch of the tibial nerve [13].

Good understanding of the anatomy of the ACL is important to be able to perform ACL reconstruction (ACLR).

## **1.2 Epidemiology of the ACL injury**

The ACL injury is a common injury that usually takes place during sporting activities. The common mechanism of injury is non-contact sudden change of direction, pivoting or landing from a jump. The most common sports involved in ACL injuries in Scandinavia are football, alpine skiing and handball [31].

In Sweden, the incidence of ACL injury is 78/100 000 person-years, and around 50% of these injuries are treated with ACLR [58]. To compare, in the United States of America, it is estimated that over 200,000 ACL injuries take place each year, with around 60% of these injuries treated with ACLR [15].

The Swedish national knee ligament registry (SNKLR) reported a total of 4324 ACL surgeries registered during 2022 in their latest annual report. The average age of undergoing primary ACLR for has steadily increased from 26 in 2005 to 29 in 2022. The percentage of women who underwent either primary or revision ACLR between 2005 and 2022 is 44 % [70].

It is rare for the ACL injury to be an isolated injury. According to Olsson et al. [61], 88% of the ACL injuries were associated with concomitant structural injuries such as injury to the menisci, collateral ligament or the articular cartilage.

A systematic review by Wiggins et al. [93] showed that there is a 15% risk for a secondary ACL injury after the initial ACL injury. According to the same study, 7 % of the reinjuries tend to happen the ipsilateral side and 8% tend to happen on the contralateral side.

The risk of revision ACLR in the literature has been reported to be between 2.1% and 7.7% [33, 81].

## **1.3 Diagnosis of the ACL injury**

The ACL injury should be suspected when patients present to the clinic with a swollen knee after a traumatic knee injury. Maffulli et al. showed that the ACL injury is the most common cause of acute hemarthrosis in the knee after an injury during sporting activities [49].

The typical patient's history would be injury during sporting with pivoting or hyperextension, usually followed by rapid swelling of the knee. Some individuals hear a "pop" sound. Stability tests are usually hard to perform during the acute phase due to pain, but should be performed when possible. Joint aspiration would reveal hemarthrosis and sometimes facilitate physical examination.

The most commonly used stability tests are Lachman tests, anterior drawer test and pivot shift test. Benjaminse et al. [11] reported that Lachman test has higher sensitivity in



detecting ACL injuries when compared to the pivot shift test. On the other hand, pivot shift test has very high specificity and poorer sensitivity in detecting ACL injuries.

Plain X-rays are usually normal in ACL injuries, but they may show a Segond fracture (avulsion fracture on the lateral aspect of tibial epiphysis), which is a pathognomonic sign of an ACL injury [86] (figure 1).

MRI is widely used for detecting ACL injuries due to its non-invasiveness and its ability to detect associated injuries like collateral ligament injuries, meniscus tears and cartilage injuries.

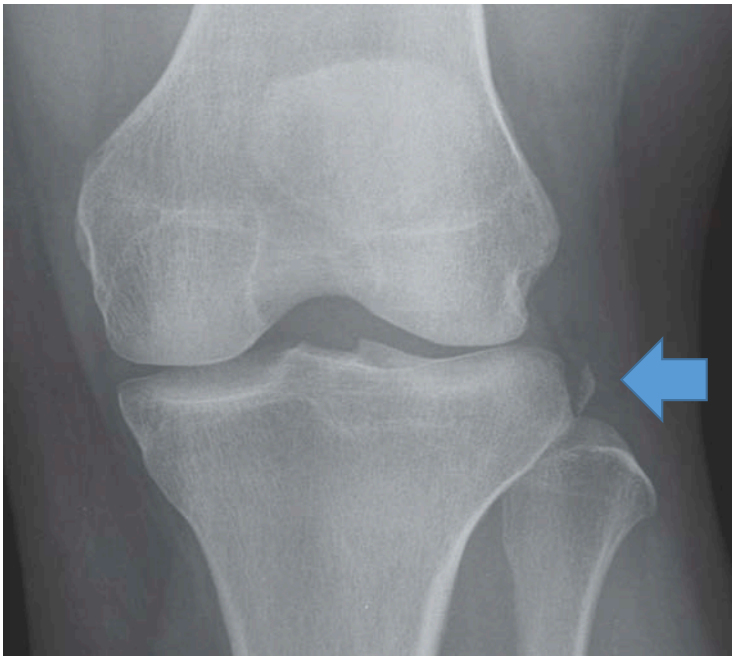


Figure 1. Plain x-ray examination for a patient with a Segond fracture “avulsion fracture on the lateral aspect of tibial epiphysis”, which is a pathognomonic sign of an ACL injury

## **1.4 Treatment of the ACL injury**

The aim of treatment is to restore knee stability based on the specific physical demands and preferences of the patient, whether in daily life activities, work or sports.

The treatment options for the ACL-injured patient include either undergoing early ACLR followed by rehabilitation, or initializing rehabilitation as the primary therapy and considering ACLR if symptomatic instability persists. Approximately 50% of all ACL injuries in Sweden are treated with ACLR [70].

In general, there is an agreement among experts that patients who are highly active and wish to return to demanding physical activities should be offered an early ACLR. While patients with lower physical demands maybe recommended a period of structured physiotherapy initially, with the possibility of performing ACLR later [26].

In recent years, new studies have shown some promising results regarding primary ACL repair, a method that has been historically abandoned due to its poor outcome when compared to ACLR [44, 51, 88]. However, satisfactory long-term results are still lacking, and ACLR remains the main surgical treatment option for the ACL-injured patient.

### **1.4.1 Anterior cruciate ligament reconstruction (ACLR)**

ACLR is performed by creating a new ligament using a graft. Grafts can either be autografts (taken from the patient's own tissue) or allografts (taken from a donor's tissue). The most commonly used grafts are hamstring, patellar and quadriceps tendon (figure 2).

The graft is positioned in the place of the old ACL and then fixed with screws, cortical buttons or other fixation methods. In 1980, David Dandy, a surgeon from the United Kingdom, performed the first arthroscopically assisted ACLR [30]. Since then, the technique has undergone significant advancements over the years.

### **1.4.2 Timing of the surgery**

The literature from 1938 and 1950 focused on the importance of early surgical treatment of all ligament injuries, especially the ACL [60, 62]. In 1990, Shelbourne et al. reported higher risk of arthrofibrosis when surgery was performed within one week of the injury [79]. Consequently, it has been widely accepted since then to delay surgery until the range of motion of the knee is restored, at least 3 weeks after the injury. However, more recent studies have shown that ACLR can be performed safely within one week of the injury [89].

Frobell et al. [28] published a randomized controlled trial in 2010 regarding the timing of surgery and concluded that a strategy of rehabilitation plus early ACLR was not superior to a strategy of rehabilitation plus optional delayed ACLR. As a result, it is widely accepted in Sweden to start the treatment with a period of structured rehabilitation and delayed ACLR if functional instability persists, leading to an increase in time to surgery.

In 2022, Bergerson et al. [12] reported in a large register-based study superior outcome of early ACLR compared to initial non-reconstructive treatment with late crossover to surgery. Although, they defined early surgery as ACLR within one year of the injury.

Lee et al. published a systematic review in 2018, and concluded that early ACLR results in comparable clinical and stability outcomes, compared to delayed ACLR [43]. They reported that the definition of early ACLR ranged broadly from 9 days to 5 months, while the definition of delayed ACLR ranged from 10 weeks to >24 months. Thus, it is hard to reach any conclusion regarding the timing due to the broad and overlapping cutoffs between the definition of early and delayed ACLR in the literature. The median time from injury to surgery in Sweden between 2005 and 2020 was 246 days, and in 2022 it was 174 days [70].



Figure 2. A hamstring autograft used for ACLR

## **1.5 Measuring the outcome of treatment of the ACL injury**

The aim of treatment of the ACL injury is to restore knee stability based on the specific physical demands and preferences of the patient, whether in daily life activities, work or sports. Measuring the outcome of treatment can be done with several methods, discussed below.

### **1.5.1 Clinical assessment of knee function**

The clinical assessment of knee function usually includes measuring laxity, range of motion and muscle strength. Regarding laxity, anterior tibial translation can be examined by Lachman test, Lever sign and the anterior drawer sign. Rotational laxity can be examined using the Pivot shift test. Sokal et al. has conducted a systematic review and reported that the diagnostic accuracy of these clinical tests is comparable [83]. However, the challenge with these tests lies in their dependence on the examiner and lack of precision. This led to the development of instrumented laxity measurement that provides precise and reproducible measurements.

The KT-1000 arthrometer is the most studied instrument for quantifying anterior knee laxity [25]. After attaching the arthrometer to the lower leg, just above the ankle, the examiner will perform a Lachman's test and the arthrometer will show the translation of the tibia in millimeters on the screen. Multiple measurements are usually needed to get an accurate measurement. The Rolimeter is another device that offers a simpler alternative to the KT-1000 and it has been shown to produce comparable results to the KT-1000 [77].

Range of motion (ROM) measurements refer to measuring the extent of achievable movement in the knee during flexion and extension, usually using a universal goniometer. A method reported to have good intra-rater reliability [63]. Symptomatic deficit in range of motion is often defined as arthrofibrosis [50].

Measuring the thigh circumference proximal to the most proximal part of the patella is a common method for testing muscle strength following ACLR [10]. Isokinetic muscle measurements have good intra-rater reliability in patients following ACLR. It is, therefore, the recommended gold standard in evaluating knee muscle strength in this patient group [87]. It involves using a special machine (Biodex) to evaluate the strength and performance of the muscle while controlling the speed of the movements.

Hop testing is usually used in assessing the outcome after ACLR, as it has been reported to be a valid and reliable outcome measure [71]. There are many variants of the hop test such as the single leg hop test, the triple hop test and the crossover hop test.

### **1.5.2 Patient reported outcome measures (PROMs)**

The term PROM refers to questionnaires that collect health outcomes directly from the people who experience them [20]. Over the past few decades, there has been a significant increase in the use of PROMs in both clinical orthopedic practice and research [29]. The basic requirement that a PROM must fulfill is that it should have good validity, reliability and responsiveness, as well as no ceiling or floor effect [48]. The International Knee Documentation Committee Subjective Knee Form (IKDC-SKF) is a knee specific measure of symptoms, function and sports activity, and it is one of the most commonly used PROMs after ACLR injury [35]. Another widely used PROM is the Knee Injury and Osteoarthritis Outcome Score (KOOS) [74], which was developed to assess both short-term and long-term consequences and function in patients with knee injury and osteoarthritis. KOOS is the primary PROM used by many ACL quality registers [31].

The KOOS consists of five, separately scored, subscales: pain, other symptoms, function in daily living, function in sport and recreation and knee related quality of life [74]. Another questionnaire that is used by the SNKLR is the European Quality of Life Five Dimension (EQ-5D) [5, 67]. It is a generic health-related quality of life instrument that assesses the patient's overall health status and is not knee-specific.

One problem of the PROMs is that they are presented in research papers as absolute numbers and it might be challenging to apply them clinically. Two terms have emerged to provide thresholds to make the interpretation of KOOS more relevant clinically; Patient Acceptable Symptom State (PASS) and Treatment Failure (TF) [73]. The PASS thresholds for the KOOS subscales, validated by Muller et al. [56], and the TF thresholds defined by Ingelsrud et al. [34] were utilized in this thesis. The specific thresholds applied were as follows:

- KOOS Pain: PASS=88.9, TF=57
- KOOS Symptoms: PASS=57.1, TF=56
- KOOS ADL: PASS= 100, TF=71
- KOOS Sports: PASS = 75, TF=28
- KOOS QoL: PASS = 62.5, TF=28

### **1.5.3 Radiological assessment of osteoarthritis (OA)**

Although ACLR may restore functional stability in the short-term, many studies have reported that there is still a high risk of developing OA in the long-term [9, 45, 90].

Several classification systems are used to grade OA based on findings from weight-bearing x-rays. The most commonly used classifications are: Kellgren-Lawrence [39], Ahlbäck [4] and Fairbank [27]. According to Kellgren-Lawrence [39], OA is graded as follows:

- Grade 0: No joint space narrowing or reactive changes.
- Grade 1: Doubtful joint space narrowing and possible osteophytic lipping.
- Grade 2: Definite osteophytes and possible joint space narrowing.
- Grade 3: Moderate osteophytes, some joint space narrowing, some sclerosis and possible bone end deformity.
- Grade 4: Large osteophytes, marked joint space narrowing, severe sclerosis and possible and definite bone end deformity.

## **1.6 Adverse events following an ACL injury**

Adverse events can be defined as undesirable incidents or negative outcomes that may arise following an ACL injury. These events may arise during diagnosis or treatment of the injury. One major challenge observed in the literature regarding adverse events is that they are often underreported [54].

Septic arthritis following ACLR is a major adverse event and will be discussed separately in the next chapter. Missed or delayed diagnosis is another major adverse event. Arastu et al. [6] reported that less than a third of the patients with an ACL injury receive the correct diagnosis at the primary medical consultation. Despite the fact that most patients describe a typical injury mechanism, present with characteristic symptoms and seek medical consultation within one week of the injury.

Suboptimal surgery and technical errors have been reported to be a common cause of adverse events [68]. Among these errors, incorrect graft placement and graft fixation errors have been reported as prevalent issues in the Nordic countries [57, 59, 68].

Other adverse events may include pulmonary embolism, deep vein thrombosis and nerve injuries.

### **1.6.1 Septic arthritis following ACLR**

The incidence of septic arthritis following ACLR has been reported in large registry-based studies to be between 0.8% and 1.1 [16, 41]. Although rare, it is a severe and devastating adverse event. The treatment of septic arthritis usually involves multiple irrigation and debridement (I&D) operations and long-term administration of antibiotics.

The clinical presentation of septic arthritis following ACLR has mainly been studied within single institutions with small numbers of infected patients [8]. The clinical presentation may vary depending on several factors, but patients with septic arthritis usually present with joint swelling, pain, impaired range of motion and sometimes redness. Systemic signs of infections such as fever and chills maybe present. The diagnosis is usually confirmed by synovial fluid analysis [23]. According to a systematic review conducted by Kursumovic et al. [42], coagulase-negative staphylococci (CoNS) were the most common infectious agent, followed by *Staphylococcus aureus* (*S.aureus*). Although the review included 16 studies, the total number of infected patients across all studies was 147.

The outcome of ACLR complicated by septic arthritis has mainly been studied in small series in the literature. Makhni et al. [52] conducted a systematic review on the topic including 19 studies and 203 infected patients. They reported that the outcomes of patients with septic arthritis are comparable with those in patients in whom infection does not develop. This includes postoperative ROM, residual instability, and return to preinjury level of activity. Interestingly, they concluded as well that patients with septic arthritis are associated with reduced functional outcomes based on the differences found in IKDC scores. Although, these findings are limited by the fact that most of the studies included in the review were retrospective case-series with different types of biases introduced into the data collection and analyses.

There is also a lack of studies reporting on the rate of revision ACLR among patients with primary ACLR complicated by septic arthritis.

## **1.7 The patient insurance system in Sweden**

There are several ways to identify adverse events that can occur after an injury or a procedure. In study I, adverse events were identified through studying compensation claims reported to the Swedish national insurance company (Löf). In Sweden, all individuals treated by the publicly financed health care system are insured against preventable adverse events.

The Swedish patient insurance system is based on a no-fault patient-injury compensation plan [21]. Patient malpractice claims are handled administratively and compensated after an expert physician review confirms that the patient injury resulted from medical error [65]. This system is mostly seen in countries with universal health care coverage and aims to reduce errors and improve safety without blaming the medical practitioner [36].

In 2022, 20,500 compensation claims were reported to Löf. 38% of the claims processed that year were accepted. Orthopedic surgery was the predominant specialty being responsible for approximately 20% of the reported claims [46].

To compare, the United States of America uses a system based on malpractice tort lawsuits. This system aims to deter physicians from practicing beyond their expertise, punish those who practice low-quality care and compensate patients injured by low-quality care [84].

## **1.8 Registers in Sweden**

In Sweden, there is a large number of registers that are useful for medical research. They can be divided into national public authority registers and health quality registers.

### **1.8.1 The personal identification number**

The Swedish Personal Identification number (PIN), functions as a distinctive identifier within the health care system and various sectors of Swedish society. Additionally, the PIN plays a pivotal role as the primary variable in extensive register linkages for medical research [47].

### **1.8.2 The National Patient Register**

Established in the 1960s, as the national board of health and welfare started to gather information about in-patients at public hospitals. At that time, the register covered 6 out of 26 health councils in Sweden. Since 1987 it started to cover all in-patient care in Sweden. Since 2001, it covers even outpatients doctor visits, including day surgery and psychiatric care from both private and public caregivers, excluding primary health care [92].

Data that can be gathered from this register can be divided into 4 categories:

- Patient data (PIN, gender, age, place of residence).
- Geographical data (County Council, hospital/clinic, department).
- Administrative data (In-patient: date of admission, date of discharge, length of stay unplanned/planned admission, admitted to, discharged to, Outpatient: date of admission, date of discharge, unplanned/planned admission, acute care data).
- Medical data (main diagnosis, secondary diagnosis, external cause of injury, procedures).

The diagnoses are coded according to the International Classification of Diseases (ICD) 10th revision (ICD-10) [92].

### **1.8.3 The Swedish prescribed drug register**

Established in 2005 and covers all prescribed drugs dispensed at pharmacies in Sweden.



Data that can be gathered from this register is patient data (PIN, age, gender, place of residence), drug name, the prescription details, as well as information about the prescriber [91].

#### **1.8.4 The Cause of Death register**

The cause of death register is a high-quality complete register of all deaths in Sweden since 1952. It contains patient data (PIN, age, gender, place of residence) as well as underlying cause of death based on ICD codes [82].

#### **1.8.5 Health Quality Registers**

A health quality register contains individualized data about medical interventions, procedures and outcomes after treatment. Each register is supported by an organization of health care professionals and patient representatives. It is annually monitored and approved for financial support by an executive committee. There are more than 100 national health quality registries in Sweden [69].

#### **1.8.6 The Swedish National Knee Ligament Registry (SNKLR)**

Data from SNKLR has been used in all four studies included in this thesis. The register started in 2005 by a group of ACL surgeons. It comprises patients undergoing primary ACLR and ACLR revisions, as well non-operative treatment of ACL injuries. The register covers 90% of all ACL procedures performed in Sweden. It consists of two parts: patients' part and surgeons' part. The patients part includes baseline data like BMI and smoking, the KOOS and EQ-5D. The surgeons part includes activity at injury, time from injury to surgery, operating time, graft selection and fixation technique [5].



## 2 Research aims

The aims of the thesis were to investigate the following aspects of the ACL injury:

- To investigate the reasons of adverse events and treatment errors following an ACL injury, as identified in compensation claims reported to the national insurance company (Löf).

### **-Study I**

- To analyze Patient Reported Outcome Measures (PROMs) and examine the five-year risk of revision surgery after primary ACLR complicated by septic arthritis.

### **-Study II**

- To describe the clinical characteristics of the common infectious agents that cause septic arthritis following ACLR, in order to provide better understanding of their impact on the clinical presentation of the disease.

### **-Study III**

- To analyze the long-term outcomes of ACLR in a randomized controlled trial comparing acute and delayed reconstruction.

### **-Study IV**



## 3 Materials and methods

### 3.1 Ethical considerations

All studies were conducted in accordance with the declaration of Helsinki [1]. Ethical permits were granted before the commencement of the studies, either from the regional ethical board of Karolinska university in Stockholm or from the Swedish ethical review board.

Informed consent was obtained from all participants in study IV. In studies I, II and III, the need for informed consent was waived by the ethical review boards. The decision is based on the current regulations in Sweden, which allow the use of registry-based data for research without requiring informed consent from the study participants. The data is anonymized and presented at the group level and the risk of identifying sensitive information for an individual is minimal.

### 3.2 Identifying the adverse events (Study I)

Study I was designed as a retrospective observational study. the goal was to identify all the patients with an ACL injury between 2005 and 2014 who had filed an ACL-related compensation claim. First, we searched the National Insurance Company's (Löf) database for claims with ICD-10 codes that are associated with anterior cruciate ligament injuries, S83.5, S83.6, S83.7, or M23.5.

Secondly, all patients with an ACL injury between 2005 and 2014 who are registered at SNKLR were cross-matched with data from Löf's database based on the Swedish Personal Identification Number (PIN). A flowchart of patients in study I is presented in figure 3.

734 claims were found. After a thorough review of medical records, 530 eligible claims were identified. 191 claims were excluded as they were not ACL-related. Most of them were patients who had an ACL injury registered in the SNKLR during the study period. Simultaneously they had also filed a compensation claim to Löf for a different matter. Thirteen claims were excluded, as they were not eligible for compensation because their private care provider was not included in the national insurance. These patients were directed by Löf to contact their care provider and file a claim to the private care insurance company.

If the adverse event was deemed to be avoidable according to the medical experts at Löf, then the claim will be accepted and the patient will be compensated. The causes behind accepting or rejecting a compensation claim were studied and the patients were categorized

accordingly. The group with accepted claims was analyzed regarding demographic data, increase in recovery time, increase in disability and the amount of economic compensation.

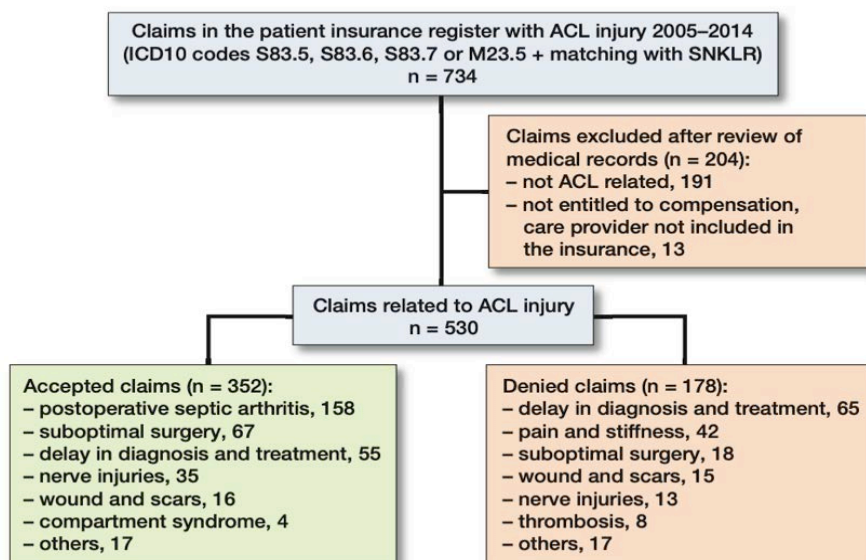


Figure 3. A flowchart of patients in study I

### 3.3 The consequences of post-operative septic arthritis (Study II)

Post-operative septic arthritis was identified as the most common reason for accepted compensation claims in study I. The outcomes and revision risk of septic arthritis was analyzed in study II. The design is a retrospective analysis of prospectively collected data.

Based on a previously published study by the research group aimed at analyzing the risk factors for septic arthritis following ACLRs [41], all primary ACLRs (n=23,075) performed utilizing a hamstring or patellar autograft in 2006-2013 were identified. This was a subgroup from the original cohort which was a result of a cross-matching process between SNKLR and three registries from Swedish national board of health and welfare, which was then followed by a national medical record review to confirm the diagnosis of septic of arthritis. The flow chart of patients and methods in study II is presented in figure 4.

PROMs (KOOS and EQ-5D index) and revision surgery data was extracted from SNKLR up to five years following ACLR.

The patients were categorized into two groups: with or without septic arthritis. An analysis was performed of the KOOS subscales and EQ-5D index data collected pre-operatively and post operatively at 1-,2- and 5-years follow-ups. PROMs data for patients that underwent revision ACLR was included until the date of the revision surgery. The risk of revision ACLR within 5 years of the index ACLR was calculated.

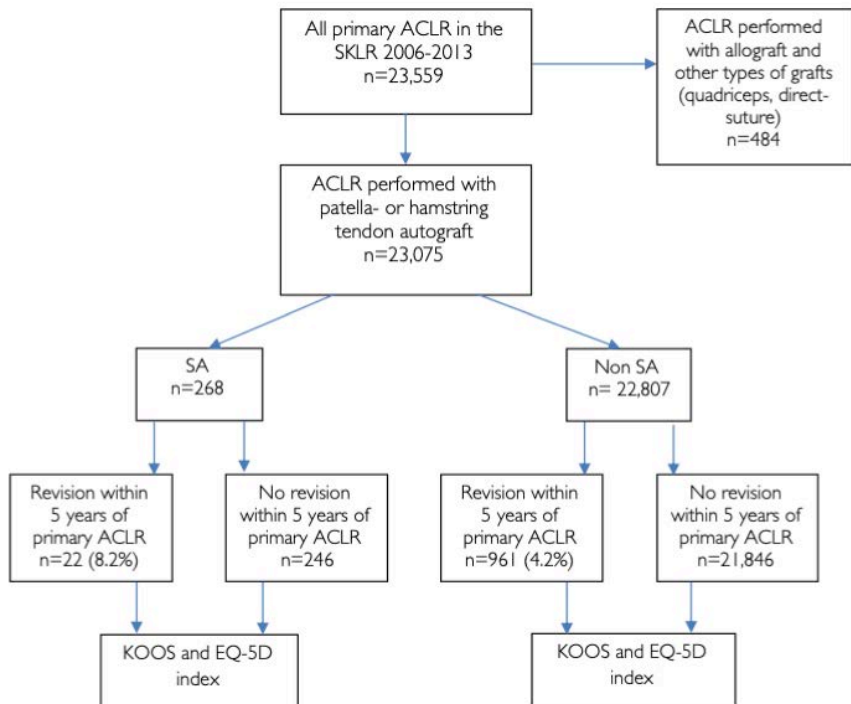


Figure 4. A flowchart of patients in study II

### 3.4 Microbiology and clinical presentation of septic arthritis (Study III)

Study III is a retrospective observational study. The aim was to describe the variations in the clinical presentation of post-operative septic arthritis based on the causative infectious agent.

In study I, 158 patients with an accepted compensation claim due to post-operative septic arthritis were identified. Löf obtains detailed medical records from the treating hospital in order to make a decision regarding compensation. The medical records include admission notes, follow-up notes, operation notes, lab results and other associated medical records. The medical experts at Löf go through medical records to provide a medical decision to

confirm septic arthritis. The medical experts are experienced orthopedic surgeons specialized in the subject of the claim.

A thorough analysis of the medical records was performed for the study patients. Additionally, data was extracted from SNKLR.

Data collected from the medical records included:

- Causative infectious agent
- Age at the time of surgery
- Sex
- Date of the surgery
- The side of the operation (right or left knee)
- Primary or revision ACLR
- The choice of the graft used in ACLR
- The duration from ACLR to the first I&D (irrigation and debridement) operation
- The number of days of inpatient care
- The number of arthroscopic and open I&D operations
- If the graft was removed during the initial I&D operations or not
- CRP (C-reactive protein) at the time of presentation
- Maximum CRP value during the inpatient period
- WBC (White blood cell) count at the time of presentation
- Temperature at the time of presentation

Data collected from SNKLR included:

- BMI (Body mass index)
- Smoking
- The operating time
- The choice of pre-operative antibiotic prophylaxis

The data was then grouped according to the agent causing the infection.



### 3.5 The long-term outcome of early ACLR (Study IV)

Study IV was a long-term follow-up of a randomized controlled trial. The patients were consented and clinically assessed, differing in methodology from the other studies which were register-based.

Between 2006 and 2013, patients were recruited at Stockholm South General Hospital (Södersjukhuset) to participate in a randomized controlled trial aimed at investigating the impact of the timing of ACLR on the development of arthrofibrosis and short-term outcomes.

70 patients were randomized to either acute ACLR performed within 8 days after injury or to delayed ACLR performed after recovery of ROM within 6 and 10 weeks after injury. Previous follow-ups were performed at 3,6,12 and 24 months post-operatively. The patients were contacted and invited to participate in a long-term follow-up. The flowchart of patients and methods in study IV is presented in figure 5.

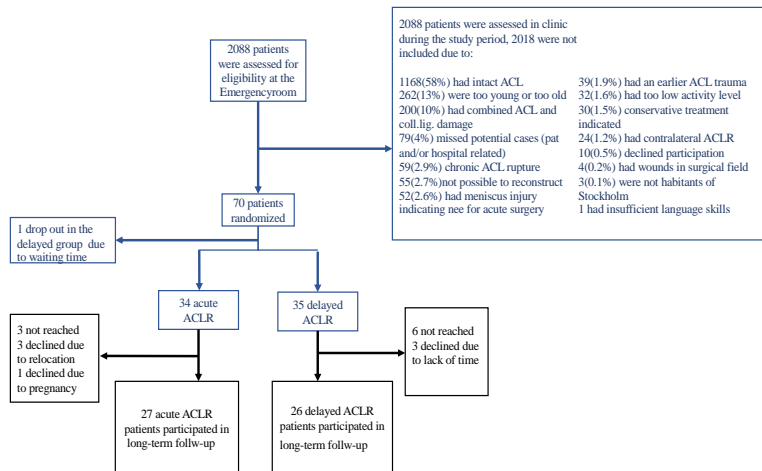


Figure 5. A Flowchart of patients in study IV. Black boxes indicate data concerning the long-term follow-up and blue boxes indicate data published earlier.

The long-term follow-up included 3 parts:

- Clinically-assessed knee function: The patients were assessed by the same experienced physiotherapist. The assessment included ROM measurements using a goniometer, instrumented knee laxity using a Rolimeter and KT-1000 and muscle strength using Biodex, thigh circumference and single leg hop test.
- PROMs: The patients were asked to fill in a questionnaire containing: KOOS, Tegner's activity level and Lysholm's score. Two questions were added "How is your knee functioning?" and "How does your knee affect your activity level?" The patients provided their answers on a visual analogue scale (VAS) ranging from 0 to 100.
- Weight-bearing radiological examination: Both index and contralateral knees were examined with anteroposterior (AP) and lateral view in 30 degrees of flexion. OA was defined as grade  $\geq 2$  according to Kellgren-lawrence classification, which is defined as definite osteophyte formation with possible narrowing of the joint space.

### 3.6 Statistics

All the statistical analyses were performed using IBM SPSS software package for Macintosh or Windows version 26.0, 27.0 or 28.0.

The variables were presented as frequencies and percentages, means and standard deviations (SD) or medians, ranges or interquartile ranges (IQRs) depending on the level of measurement and the normality of distribution.

In study II, Linear mixed models with restricted maximum likelihood method was used to analyze PROMs change over time. Within-subject effects and the between subjects' effect were presented at each time point with 95% confidence interval (CI) and p-value. Proportional Cox regression was used to calculate the risk of revision ACLR within 5 years of the primary ACLR. The hazard ratio with 95% CI is presented.

In study III, Kruskal-Wallis analysis of variance test was used to analyze the distribution of continuous variables across infectious agents. Chi-squared or Fisher's test was used to analyze the association between categorical variables.

In study IV, categorical variables were tested with Chi-squared or Fisher's test. Non-parametric tests were used to compare the non-normally distributed ratio scale variables. The Student t-test was used for independent normally distributed ratio scale variables. To evaluate changes over time for ordinal data, Friedman's test was used. A binary logistical multivariable regression analysis was performed to assess the a-priori defined risk factors for OA (age, BMI, cartilage and meniscus resection) with the randomization variable (Acute or Delay)





## 4 Results

### 4.1 Compensation claims related to an ACL injury

In study I, 530 eligible compensation claims related to an ACL injury between 2005 and 2014 were identified. 352 claims were accepted and 178 were rejected. The most common cause for accepting a compensation claim was post-operative septic arthritis followed by suboptimal surgery and delayed in diagnosis and treatment. The number of accepted claims each year in relation to the number of claims due to septic arthritis is presented in figure 6.

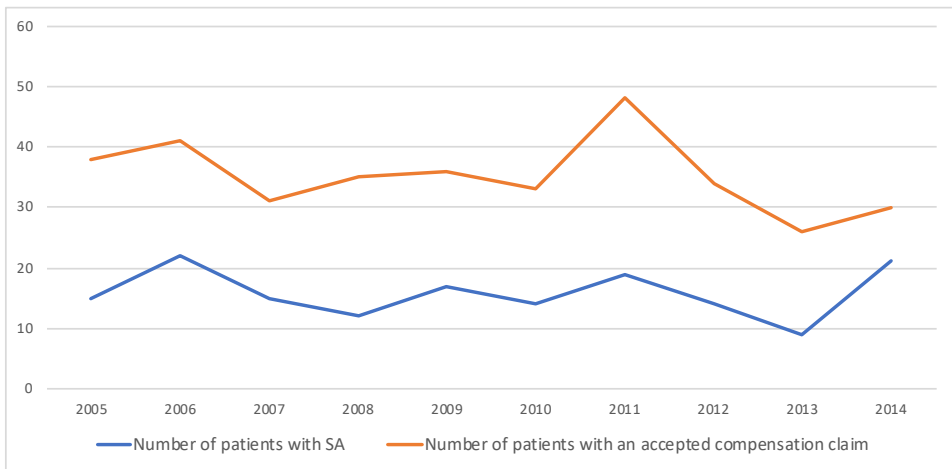


Figure 6. The number of patients with a claim related to post-operative septic arthritis (SA) in comparison to the total number of patients with an accepted ACL-related compensation claim each year during 2005-2014.

50% of the accepted claims were found to have increased disability due to the adverse event. The median increased disability ranged from 2% to 4% depending on the adverse event. The details are described in Table 1.

Type of patient injury	Number of ACLR	Age Median (range)	Sex ♂/♀	Increased disability Median (range)	Prolonged time of recovery in days Median (range)	Economic compensation Median (range) in EUR
Post-Operative Septic arthritis (n=158)	158	25 (14-59)	♂=103 ♀=55	n=87 3% (1-12%)	n=122 60 (0-480)	n=154 3344 (474-40613)
Suboptimal surgery (n=67)	67	25 (16-49)	♂=32 ♀=35	n=34 2% (1-10%)	n=57 60 (0-300)	n=62 3024 (112-21875)
Delay in diagnosis or treatment (n=55)	45	21 (14-53)	♂=28 ♀=27	n=11 4% (1-17%)	n=47 90 (0-730)	n=55 1628 (183-21957)
Nerve injuries (n=35)	35	24 (13-48)	♂=21 ♀=14	n=32 2% (1-5%)	n=41 0 (0-120)	n=35 2919 (256-12830)
Wounds and scars (n=16)	16	22 (16-50)	♂=11 ♀=5	n=2 3% (1-4%)	n=15 0 (0-90)	n=15 1258 (128-10342)
Compartment syndrome (n=4)	4	21 (18-35)	♂=3 ♀=1	n=4 3% (1-5%)	n=3 30 (14-180)	n=4 6649 (1959-10407)
Others (n=17)	17	28 (14-47)	♂=9 ♀=8	n=6 2% (1-2%)	n=8 15 (0-270)	n=17 2766 (409-6507)

Table 1. Demographics and characteristics of patients with accepted claims categorized by cause. Values are counts or medians (range).

#### 4.2 The impact of septic arthritis on the outcome of ACLR

In study II, a cohort of 23,075 patients who underwent primary ACLR using a hamstring or a patellar autograft in 2006-2013 were analyzed. 268 (1.2%) events of septic arthritis were observed.

Significant differences were observed between the groups with (n=268) and without (n=22,807) septic arthritis for the variables sex, cartilage lesion, operating time, choice of graft, choice of preoperative antibiotic prophylaxis and revision ACLR within 5 years.

Two years after ACLR, patients with septic arthritis had a greater proportion of treatment failures and fewer PASS on all KOOS subscales, compared with patients without septic arthritis (figure 7). Moreover, patients with septic arthritis had poorer scores on KOOS and EQ-5D at 1,2- and 5-years follow-ups. The rate of revision ACLR within five years of the primary ACLR was nearly double for patients with septic arthritis when compared to those without septic arthritis (figure 8).

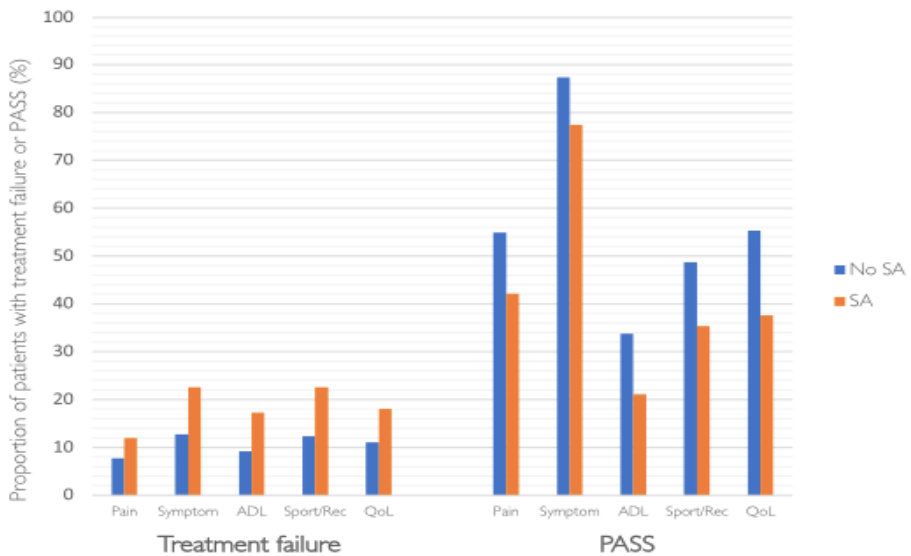


Figure 7. Proportions of patients with Treatment failure and patient's acceptable symptoms state (PASS) in the groups with and without septic arthritis (SA), displayed with the five KOOS subscales; 2 years post-operatively.

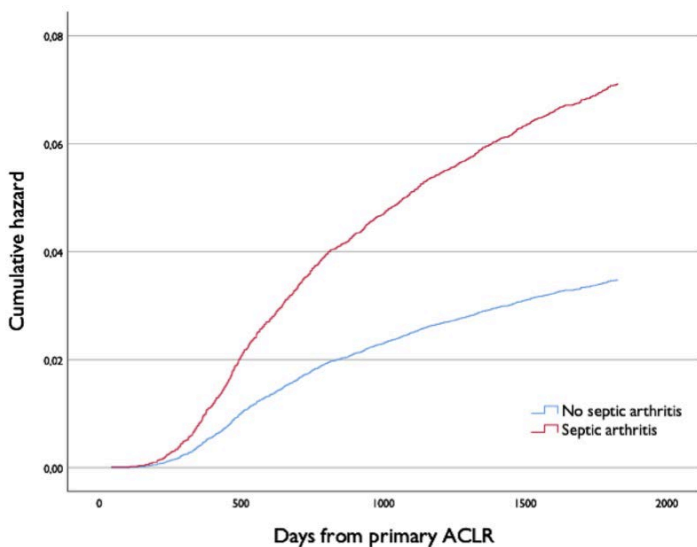


Figure 8. Adjusted, cumulative hazard rate for revision ACLR within 5 years of the primary surgery for patients with and without septic arthritis.

### 4.3 Clinical characteristics of the infectious agents causing septic arthritis

In study III, a subgroup analysis was performed for 158 patients with septic arthritis identified in Study I. One patient's medical record lacked information regarding the causing infectious agent. The majority (60%) of patients were infected with Coagulase negative staphylococci (CoNS) (figure 9).

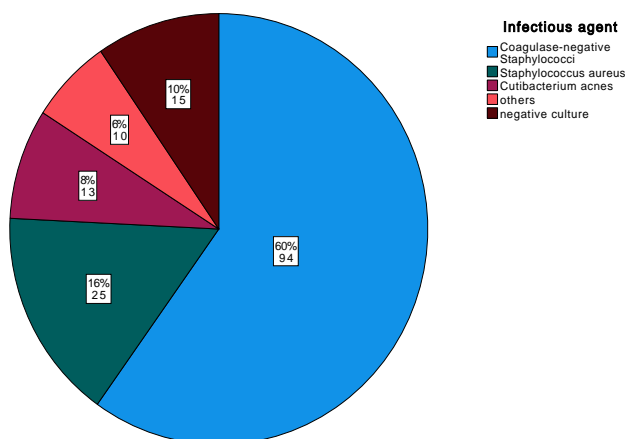


Figure 9. The distribution of infectious agents causing septic arthritis among 157 patients in Sweden from 2005-2014 presented in counts and percentages.

Significant differences were observed across causing infectious agents regarding maximum CRP level (Figure 10), and duration from ACLR to the first irrigation and debridement operation (Figure 11).



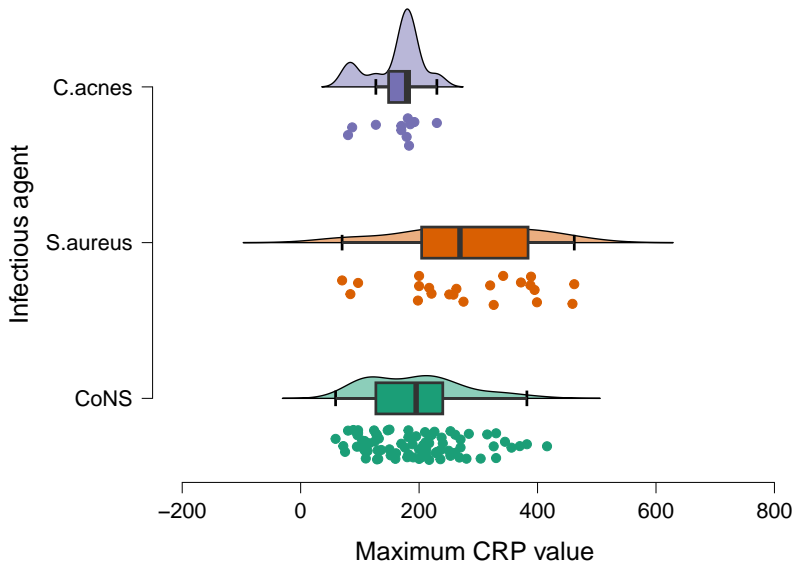


Figure 10. The distribution of maximum CRP levels for patients infected with Coagulase negative staphylococcus (CoNS), Staphylococcus aureus (S.aureus) and Cutibacterium acnes (C.acnes).

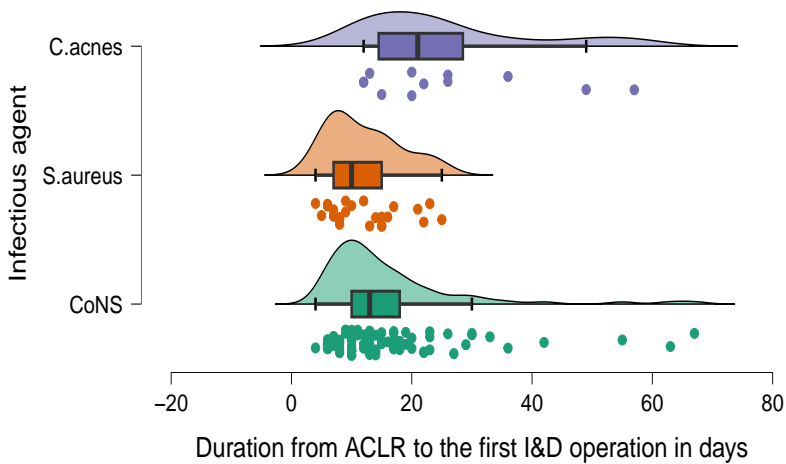


Figure 11. The distribution of the duration from ACLR to the first irrigation and debridement (I&D) operation in days, for patients infected with Coagulase negative staphylococcus (CoNS), Staphylococcus aureus (S.aureus) and Cutibacterium acnes (C.acnes).

#### 4.4 The long-term results and consequences of early ACL reconstructions

In study IV, 53 (76%) patients out of 70 randomized, participated in the long-term follow-up at a mean of 13 years (SD± 1.8) after ACLR. (Table2).

	Acute or Delayed ACLR (n=53)		sign.	OA or No OA (n=44)		sign.
	Acute ACLR (n=27)	Delayed ACLR (n=26)		No OA (n=31)	OA (n=13)	
Time from injury to surgery in days, mean (SD)	5 (2)	54 (8)	< 0.001	24 (26)	39 (20)	n.s
Time to long-term follow-up in years, mean (SD)	13 (1.8)	12.9 (1.9)	n.s	13.2 (1.8)	12.9 (1.8)	n.s
Female sex, n (%)	7 (26)	10 (39)	n.s	8 (26)	5 (39)	n.s
BMI at ACLR, mean (SD)	23.9 (2)	24.8 (2.7)	n.s	23.8 (2.2)	26 (2.1)	0.003
BMI at long-term follow-up, mean (SD)	25.8 (3.6)	26.5 (3)	n.s	25.4 (3.2)	28.1 (3.3)	0.014
Age at long-term follow-up, mean (SD)	40.8 (7.2)	39.2 (6.5)	n.s	40.2 (7)	41.4 (6.2)	n.s
Revision of index ACLR, n (%)	3 (11)	4 (15)	n.s	4 (13)	3 (23)	n.s
Injury to contralateral knee, n (%)	3 (11)	3 (11)	n.s	3 (10)	1 (8)	n.s
Meniscus resection at ACLR or later, n (%)	10 (37)	10 (39)	n.s	9 (29)	8 (62)	n.s
Meniscus resection or cartilage injury debrided at ACLR or later, n (%)	11 (41)	11 (42)	n.s	10 (32)	9 (69)	0.044

Table2. Demographics and clinical characteristics of the study patients categorized by acute versus delayed ACLR and by OA versus No OA on radiographic examination. OA was defined as grade ≥ 2 according to Kellgren-Lawrence classification.

Knee function was clinically assessed in 49 (70%) patients. Satisfactory knee function was observed in both groups. No differences between the groups were found in terms of ROM, anterior knee laxity or knee strength tests.

50 patients (71%) completed a PROMs questionnaire. The median activity level according to Tegner's scale continued to improve until 24 months after ACLR (Figure 12). KOOS subscales pain and symptoms scores were worse (p=0.019, 0.008) for patients in the delayed group.



Figure 12. The distribution of the median scores for Tegner's activity scale through various time points: before the injury, at inclusion after the injury, at 6, 12 and 24 months after reconstruction and at the long-term follow-up ( $P= <0.01$ ).

44 patients (62%) were assessed with radiological examination. 13 patients (30%) showed signs of OA in the index knee, compared to 4 patients (9%) in the contralateral knee ( $p=0.037$ ). 10 patients (48%) in the delayed group showed signs of OA, compared to 3 patients (13%) in the acute group ( $p=0.012$ ) (Figure 13).

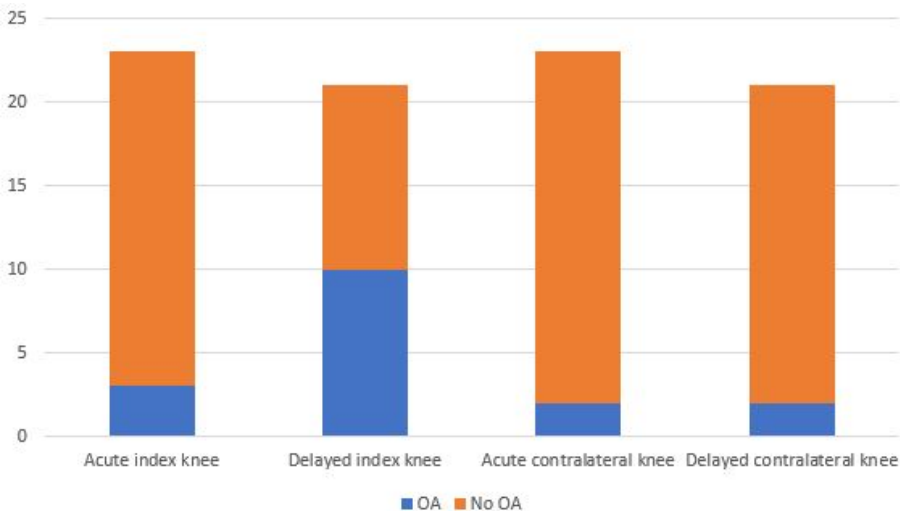


Figure 13. The number of patients with and without radiological signs of OA in the acute ( $n=23$ ) and delayed ( $n=21$ ) groups in both the index and contralateral knee for the study patients.

## 5 Discussion

### 5.1 Utilizing compensation claims to study the adverse events

In study I, ACL-related compensation claims filed to the national insurance company (Löf) were examined.

There are various alternatives for studying adverse events after a procedure or treatment. The utilization of compensation claims has emerged as a valuable way of gathering information and insights [38, 65, 68]. One of the main advantages is that compensation claims often include detailed records and comprehensive data on the patients that are usually hard to find somewhere else.

The detailed information conveyed through the patient's own narrative enables the researchers to capture a diverse range of problems and circumstances. Moreover, it provides higher levels of participant engagement in the research process. Another benefit is that compensation claims often include documented longitudinal follow-ups which are often essential for filing a claim. Conducting these follow-ups can be technically challenging or comes with a significant financial cost. Therefore, studying compensation claims seems to be a cost-effective alternative. Another advantage of studying compensations claims is that, due to the financial implications, insurance companies tend to perform thorough investigations of the claims conducted through experienced medical consultants, which often provides valuable addition to the information provided by the patient.

ACLR is often considered as a safe procedure [55]. The findings of study I shows that fewer than 1% of ACLRs performed in Sweden was reported to have an avoidable treatment error that merited compensation by the national insurance company (Löf). Previous studies from neighboring countries have shown comparable results [59, 68]. Studying the reasons for compensation claims have been insightful in identifying adverse events that can be avoided. Nonetheless, there is a possibility that the actual number of avoidable treatment errors is higher than what is reported. The discrepancy might be due to some patients with treatment errors may choose not to file a claim or could lack information on the appropriate procedure for doing so.

It is important to emphasize that Löf accepts a compensation claim based on the presence of treatment errors that can be avoided and not based on the severity of the complication. An important illustration is evident in a tragic case where a patient, unfortunately, died due to lung embolism 2 months following ACLR. Despite the severity of the complication, the compensation claim was dismissed by Löf, as their medical consultants could not identify a treatment error. Their assessment concluded that the treating physician acted according to accepted medical practice, particularly considering the prevailing cautious approach among

Swedish surgeons regarding the use of anti-thrombotic agents following ACLR. The patient did not have any known factors such as previous history of thrombosis, use of oral contraceptives or prolonged immobilization. Consequently, despite the devastating nature of this complication, the compensation claim was not accepted.

Post-operative septic arthritis was found to be the most common cause of an accepted claim. The consequences of this complication as well as aspects on the clinical presentation will be discussed in the following chapters.

Suboptimal surgery and technical errors were common causes for accepted compensation claims. A frequent claim was when the graft was placed in a higher position due to the surgeon's lack of updated knowledge on the evolving consensus regarding surgical technique. These findings emphasize the significance of continuous education. During the studied period, there was a shift from trans-tibial to anteromedial femur drilling. Consequently, claims related to graft mispositioning using the trans-tibial technique were more likely to be accepted in the later years of the study period and rejected during the earlier years.

Delays in diagnosis and treatment were as well common reasons for accepted compensation claims. The accuracy in diagnosing the ACL injury primarily is reported to be suboptimal. It has been reported that fewer than one-third of patients with an ACL injury receive an accurate diagnosis during the primary medical consultation [6]. The impact of timing of surgery will be discussed in details in another chapter. But it is worth mentioning that delaying ACLR has been reported to increase the risk of cartilage and meniscus injuries [18, 24]

The study is limited by its retrospective design and that it is limited to patient-reported claims which may introduce potential biases. Consequently, the study is unable to provide an accurate assessment of the true incidence of patient injuries and treatment errors following ACLRs in Sweden. The study reports that ACL-related treatment and patient-injuries are infrequent, yet likely underreported.

## **5.2 Evaluating the outcome of ACLR complicated by septic arthritis**

In study II, PROMs and the risk for revision ACLR for patients with and without septic arthritis were examined.

Various methods are available for assessing the outcome after a surgical procedure, one of which is by using PROMs. KOOS and EQ-5D have been used to evaluate the outcome of ACLR in study II. While KOOS is a comprehensive tool that has been validated for the assessment of knee function, its utility for the ACL injured patient has been questioned [95]. It contains questions that are irrelevant for the ACLR patients, as well as it leaves out important issues such as feeling of instability and return to sport. But KOOS was chosen by

our research group because it is the tool adopted by the Swedish national knee ligament registry (SNKLR) for assessing the outcome of the ACL reconstructed patient.

Based on the findings of Study II, patients with post-operative septic arthritis had worse KOOS scores at one-, two- and five-year follow-ups, compared to patients without septic arthritis. The study also shows that the risk of undergoing revision ACLR within five years of the primary ACLR is nearly double for patients who suffered from septic arthritis after ACLR, compared to patients without septic arthritis.

A major strength of this study is that the findings are based on a valuable large nationwide database and thus it has the ability to identify broader trends. The study presents a much larger patient sample size than previous studies on the subject. Post-operative septic arthritis is a rare complication [3, 7] and therefore large studies on this devastating condition is of great importance, especially when previous studies have been predominantly performed in single institutions with small numbers of patients [2, 14, 52].

The reason behind poorer outcomes for patients with septic arthritis is not fully understood. Many factors may play a role in the course of septic arthritis; patient specific factors and factors associated with the infection. One explanation might be the development of arthrofibrosis due to synovitis [50, 78]. Another explanation might be due to the cartilage damage caused by the toxins of the bacterial infection [75, 80], as it has been reported that patients with cartilage lesions are associated with poorer outcome of ACLR [76]. Another explanation might be that the graft would lose its tension because of the toxins of the bacteria or the washout procedures leading to instability and poorer outcomes.

It is important to mention the limitations of this study. There is no available information regarding the removal of the graft during the washout procedures, which could potentially affect both PROMs and the revision rate. On the other hand, the common practice in Sweden is to retain the graft during the primary washout procedures [14]. Additionally, there is no available information regarding technical errors during the index ACLR or re-trauma which could also affect both PROMs and the revision rate.

The KOOS and EQ-5D data during the time of this investigation include an increasing number of missing data at each subsequent follow-up. The response rate for the two year-follow up stands at 50% [70]. Nonetheless, Reinholdsson et al. [72] showed that PROMs data extracted from SNKLR is valid, in a non-response analysis. Additionally, the use of linear mixed model statistical method in this study is considered a versatile and robust approach to handle missing data in longitudinal or repeated measures studies. By incorporating all available data and making reasonable assumption about the missing data mechanism, it can produce reliable estimates and enhance the validity of the results.

While acknowledging that no study is flawless, the primary merit of this investigation lies in its status as the largest to date in reporting PROMs and risk for revision following ACLR complicated by septic arthritis.

### **5.3 Variations in the clinical presentation of septic arthritis**

In study III, the variations in clinical presentation of septic arthritis depending on the causative infectious agent were examined.

To start, it is important to acknowledge the main limitation of the study which is its reliance on patient claims reported to Lof. As a result, the actual number of infections, during the study period is not available. Over a decade, 158 patients infected with septic arthritis were found. During the same period 32,519 ACL reconstructions were performed, resulting in an incidence rate of 0.5%. Data from a comprehensive register-study has reported an incidence of 1.1% in Sweden [40]. As a result, confirming associations between variables and generalizing outcomes to other populations might not be feasible.

On the other hand, as mentioned previously, septic arthritis is a rare disease, and every large study on this condition is important. This case-series of 158 infected patients is, to my knowledge, the largest study describing detailed insights into the clinical presentation of septic arthritis following ACLR. Moreover, the finding that CoNS is responsible for 60% of the infections, as well as the distribution of the other infectious agents, is comparable to the results reported by a meta-analysis that included 147 infected patients across 16 studies [42]. Therefore, the findings of this study might be applicable to other populations, although it cannot be confirmed.

CoNS are often described as low-virulent agents. The fact that the majority of infections are caused by low-virulent agents has a clinical importance. Many patients seek medical help post-operatively with pain after ACLR. The decision on whether to perform synovial fluid analysis is a clinical decision that is usually based on clinical findings and lab results. Therefore, it is recommended that synovial fluid analysis should be performed even when the symptoms are mild and lab values are not so convincing.

Variations have been found in the duration from ACLR to the first washout procedures with patients with *S.aureus* (10 days) having the shortest duration and patients with *C.acnes* (21 days) having the longest. One hypothesis is that the variations in duration maybe due to delays in diagnosis. Previous studies have reported that it is harder to diagnose septic arthritis following ACLR caused by low-virulent agents due to milder symptoms [37].

Knowledge of the clinical characteristics of different causative agents contributes to our understanding of the epidemiology of septic arthritis following ACLR. These findings

emphasize the importance of tailored management strategies in order to be able to detect and treat this devastating complication.

Future research should focus on understanding the underlying mechanisms for the virulence of different causative agents, as well as investigating the variations in the clinical presentation and outcome of septic arthritis based on causative infectious agents in large comprehensive studies.

#### **5.4 The ideal timing to perform ACLR**

In study I, delayed diagnosis and treatment was a common reason for filing a compensation claim. The ideal timing of surgery is still a matter of debate.

In study IV, PROMs, clinically-assessed knee function and radiological examinations were evaluated for patients who underwent ACLR within 10 weeks after injury.

The study is a long-term follow-up of a randomized controlled trial comparing acute and delayed ACLR. The acute group underwent ACLR within 8 days after injury and the delayed group underwent surgery after normalized ROM was achieved, 6-10 weeks after injury. Despite these definitions, all study participants underwent ACLR within 10 weeks of the injury. In the Swedish context, this timeframe can be classified as early ACLR, considering that the median waiting duration for ACLR from injury was 264 days between 2005 and 2020 in Sweden [70].

With the aim of facilitating the interpretation of KOOS scores, Muller et al. [56] conducted a study proposing thresholds for the KOOS subscales and defining the patient acceptable symptom state (PASS). The proportions of study patients who achieved PASS at the long-term follow-up 13 years after ACLR were as follows: Symptoms= 98%, Pain 72%, ADL 54%, Sport= 72%, QoL= 82%. To compare, Bergerson et al. [12] conducted a study based on data from SNKLR and reported that patients (n=20,352) who underwent ACLR within a year from injury had superior outcomes and had the following proportions of PASS 10 years after ACLR: Symptoms=90%, Pain=59.5%, ADL=46.8%, Sport=58.9%, QoL=69.4%. Although these studies are not directly comparable, it is an indication that ACLR performed within 10 weeks of the injury is associated with satisfactory patient-reported outcomes.

No indications of persistent arthrofibrosis or higher complications rates were observed when ACLR was performed within 8 days of the injury. As stated previously, the median waiting time in Sweden for ACLR after injury is long. In Sweden, a prevalent treatment approach, especially for patients without high activity demands, involves a period of non-operative treatment for structured physiotherapy. If instability persists, delayed ACLR is then offered to the patient. It is important to acknowledge that the decision-making process



regarding ACL injury treatment is complex [62]. Research conducted by Frobell et al. [28] highlighting the benefits of non-operative treatment has played a role in shaping treatment strategies in Sweden. Moreover, many surgeons are still influenced by a study conducted by Shelbourne et al. [79] reporting a higher risk for arthrofibrosis after acute ACLR. Several other studies have reported an association between acute ACLR and persistent arthrofibrosis [22, 53, 66, 78]. All these studies were retrospective and are susceptible to various biases. Contrary to these studies, our study findings, revealing no differences in terms of ROM between acute and delayed ACLR, challenge the concept of persistent arthrofibrosis.

13 patients (30%) showed signs of OA in the index knee, compared to 4 patients (9%) in the contralateral knee ( $p=0.037$ ). 10 patients (48%) in the delayed group showed signs of OA, compared to 3 patients (13%) in the acute group ( $p=0.012$ ). In an older long-term outcome study conducted at our institution [9], the prevalence of OA was compared between patients who underwent ACLR using patellar BTB graft and those using semitendinosus tendon. The study reported an OA prevalence ranging from 55 to 70 % depending on the graft. No differences were observed between the grafts. It is encouraging to see that this more recent cohort reveals considerably lower OA prevalence. However, these studies are not comparable, for example the frequency of meniscus resections in the old study was more than 40%. Interestingly the time between injury and reconstruction in the old study was 14-16 months. Could the variation in OA prevalence be partially attributed to the time between injury and reconstruction? Unfortunately, this study is not capable of answering this question.

As previously stated, the ideal timing to perform ACLR is still a matter of debate. Cristiani et al. [24] argued that ACLR should be performed within 6 months after injury to reduce meniscal loss and the risk jeopardizing knee laxity. Prodromidis et al. [64] recommended that ACLR should be performed within 3 months after injury to decrease the risk of further intraarticular damage. Cance et al. [18] found that delaying ACLR is associated with increased rate and severity of cartilage injuries in a dose-effect fashion.

The findings of this study indicate that ACLR performed within 10 weeks after the injury results in satisfactory long-term outcomes, but with still increased risk of OA compared to the contralateral knee.

This study is limited by the low number of patients that may have restricted the ability of to detect subtle differences between the acute and delayed ACL reconstruction groups. Secondly, the prior power analysis was performed on ROM in the short term, which affects the validity of the results regarding the impact of timing of surgery on the long-term outcomes. Another limitation is the loss of follow-up of some patients which could introduce selection bias and affect the generalizability of the results.

A number of comparisons were made introducing a risk for randomly significant results. However, most of the results align with what is clinically expected and the results correspond well to earlier reported results from larger studies.

## 6 Conclusions

- The most common reasons for accepted compensation claims following an ACL injury are post-operative septic arthritis, suboptimal surgery and delay in diagnosis and treatment.

### **-Study I**

- The outcome of ACLR complicated by septic arthritis is worse than without septic arthritis and the risk of revision ACLR is twice as high for patients with septic arthritis compared to patients without septic arthritis.

### **-Study II**

- Variations were observed in the clinical presentation of septic arthritis after ACLR depending on the causative infectious agent, with low-virulent agents being responsible for the majority of the infections. This highlights the need for larger studies aimed at understanding the differences among these infectious agents.

### **-Study III**

- Early ACLR within 10 weeks of injury results in satisfactory long-term outcomes, but with increased risk of osteoarthritis compared to the contralateral knee.

### **-Study IV**

## 7 Points of perspective

The primary focus of this thesis was to investigate the adverse events and long-term outcomes for patients who have suffered from an ACL injury. However, most of the patients that participated in the studies underwent ACL reconstruction. Consequently, while the intention was to study the adverse events following the ACL injury regardless of treatment choice, the main findings are predominantly associated with the adverse events and outcomes following ACLR.

### 7.1 Compensation claims and adverse events

In medical school, we were taught the doctors oath “do no harm”. That is why it is crucial to study adverse events in order to be able to work towards prevention. An important aspect of my research journey has involved reading hundreds of letters written by the patients describing their injury in details. This has granted me deeper insights into the mistakes we make while treating our patients and the variability of the adverse events based on the reasons behind them.

An important aspect that should be dealt with in the future is the large number of underreporting of adverse events that has been found in study I. A similar problem has been found by Kasina et al. when examining adverse events after hip arthroplasty [38].

### 7.2 Septic Arthritis

In study II, worse outcome and higher risk for revision was observed for patient with septic arthritis. In study III, variations were observed in the duration from surgery to start of treatment based on the causative agent. These variations may represent delay in diagnosis of this devastating complication. The impact of this delay and the impact of the causative infectious agent on the outcome is unknown, which can be the focus in future large epidemiological studies.

A common practice at our institution and many other institutions is soaking the graft with Vancomycin. There is growing evidence that this practice lowers the rates of septic arthritis

[19]. However, the retrospective design of these studies and the lack of randomized controlled trials raise questions about this practice.

### **7.3 The ideal timing of ACLR**

The findings of study IV showed that long-term results of both acute ACLR and within 10 weeks of the injury provides satisfactory results, but the prevalence of osteoarthritis is still high. A recently published systematic review by Liukkonen et al. [45] concluded that the prevalence of post-traumatic OA after ACLR is still high despite the advances in surgical techniques. The current evidence indicates that the injury itself, whether managed operatively or non-operatively, is the cause of OA. However, the impact of the duration between injury and surgery on the development of OA is not well-studied. Whether acute ACLR can help to lower the prevalence of post-operative OA is an interesting topic for future studies.

## 8 Acknowledgements

I would like to express my heartfelt gratitude to every individual who supported and guided me. Without the support of these great people around me, it would not have been possible to complete this thesis

**Anders Stålman**, my main supervisor and the reason why I started this research journey. Thank you for being an inspiration for me since the start, and supportive of me through the whole period.

**Björn Barenius**, my co-supervisor and former chief. Thank you for your kindness and for sparing time for me even during late evenings, to answer my questions, ease my anxiety, and enrich me with knowledge.

**Kalle Eriksson**, my co-supervisor and professor. Thank you for all the knowledge and experience you brought to this project.

**Orlando Morales**, my mentor. The master. Thank you for your friendship, for the laughs and for teaching me the art of arthroscopy.

My co-authors, **Tobias Wörner**, **Jesper Kraus Schmitz**, **Alexander Hallgren**, **Henrik Hedevisk**, **Adam Nordkvist**, **Per-Mats Janarv**, **Dzan Rizvanovic** and **Markus Walldén**. Thank you for your invaluable contribution and cooperation.

**My present and former colleagues at Södersjukhuset and Södertälje sjukhus**, you have my deepest gratitude and respect.

**Pelle Olerud** thank you for believing in me and teaching me how to be a surgeon. I am looking forward to operate with you again in the near future.

**Pelle Gustafson**, chief medical officer at Löf. Thank you for your cooperation and for the contribution in funding this thesis.

**Per Lindblom** and **Daniel Kattilvaara**, my clinical mentors during orthopedic surgery residency. Thank you for your kindness, knowledge and friendship.

**Anneli Andersson** and **Monica Linder**, medical secretaries at the department of orthopedic surgery at södersjukhuset. Thank you for always being available to help, fix and arrange. Without you nothing would function.

And last by not least, my beloved family:

**Hassan Mahmood Omar**, chief marine engineer and my father, **Khozama Mustafa**, economist and my caring mother, you have been the light that guided my path. I want to express my deepest gratitude for the countless sacrifices you have made through all the years. For teaching me the importance of education. You have shaped my character and given me the resilience to stand in front of challenges. Thank you for your endless love and for being the great parents that you are.

**Mafaz and Mahmood**, my siblings, thank you for your support.

**Zein and Zakaria**, my children. Thank you for keeping me busy and for reminding me that family is the most precious and vital aspect of life.

And Lastly my beloved wife **Li**, I am so lucky for having you in my life. Thank you for standing by me during the demanding and challenging time required to write this thesis. Your support, patience and love are gifts, for which I will always be thankful.

## 9 References

1. (2013) World Medical Association Declaration of Helsinki: ethical principles for medical research involving human subjects. *Jama* 310:2191-2194
2. Abdel-Aziz A, Radwan YA, Rizk A (2014) Multiple arthroscopic debridement and graft retention in septic knee arthritis after ACL reconstruction: a prospective case-control study. *Int Orthop* 38:73-82
3. Agarwalla A, Gowd AK, Liu JN, Garcia GH, Bohl DD, Verma NN, et al. (2019) Effect of Operative Time on Short-Term Adverse Events After Isolated Anterior Cruciate Ligament Reconstruction. *Orthop J Sports Med* 7:2325967118825453
4. Ahlbäck S (1968) Osteoarthritis of the knee. A radiographic investigation. *Acta Radiol Diagn (Stockh) Suppl* 277:277-272
5. Ahlden M, Samuelsson K, Sernert N, Forssblad M, Karlsson J, Kartus J (2012) The Swedish National Anterior Cruciate Ligament Register: a report on baseline variables and outcomes of surgery for almost 18,000 patients. *Am J Sports Med* 40:2230-2235
6. Arastu MH, Grange S, Twyman R (2015) Prevalence and consequences of delayed diagnosis of anterior cruciate ligament ruptures. *Knee Surg Sports Traumatol Arthrosc* 23:1201-1205
7. Bansal A, Lamplot JD, VandenBerg J, Brophy RH (2018) Meta-analysis of the Risk of Infections After Anterior Cruciate Ligament Reconstruction by Graft Type. *Am J Sports Med* 46:1500-1508
8. Barbara K, Alan I, Goran V, Saša J (2020) Knee infection following anterior cruciate ligament reconstruction: a cohort study of one thousand, eight hundred and ninety one patients from the single-centre database. *Int Orthop* 44:869-875
9. Barenius B, Ponzer S, Shalabi A, Bujak R, Norlén L, Eriksson K (2014) Increased risk of osteoarthritis after anterior cruciate ligament reconstruction: a 14-year follow-up study of a randomized controlled trial. *Am J Sports Med* 42:1049-1057
10. Baron JE, Parker EA, Duchman KR, Westermann RW (2020) Perioperative and Postoperative Factors Influence Quadriceps Atrophy and Strength After ACL Reconstruction: A Systematic Review. *Orthop J Sports Med* 8:2325967120930296
11. Benjaminse A, Gokeler A, van der Schans CP (2006) Clinical diagnosis of an anterior cruciate ligament rupture: a meta-analysis. *J Orthop Sports Phys Ther* 36:267-288
12. Bergerson E, Persson K, Svantesson E, Horvath A, Olsson Wällgren J, Karlsson J, et al. (2022) Superior Outcome of Early ACL Reconstruction versus Initial Non-reconstructive Treatment With Late Crossover to Surgery: A Study From the Swedish National Knee Ligament Registry. *Am J Sports Med* 50:896-903
13. Biedert RM, Stauffer E, Friederich NF (1992) Occurrence of free nerve endings in the soft tissue of the knee joint. A histologic investigation. *Am J Sports Med* 20:430-433
14. Bostrom Windhamre H, Mikkelsen C, Forssblad M, Willberg L (2014) Postoperative septic arthritis after anterior cruciate ligament reconstruction: does it affect the outcome? A retrospective controlled study. *Arthroscopy* 30:1100-1109
15. Bowman EN, Limpisvasti O, Cole BJ, ElAttrache NS (2021) Anterior Cruciate Ligament Reconstruction Graft Preference Most Dependent on Patient Age: A Survey of United States Surgeons. *Arthroscopy* 37:1559-1566



16. Brophy RH, Wright RW, Huston LJ, Nwosu SK, Group MK, Spindler KP (2015) Factors associated with infection following anterior cruciate ligament reconstruction. *J Bone Joint Surg Am* 97:450-454
17. Buoncrisiani AM, Tjoumakaris FP, Starman JS, Ferretti M, Fu FH (2006) Anatomic double-bundle anterior cruciate ligament reconstruction. *Arthroscopy* 22:1000-1006
18. Cance N, Erard J, Shatrov J, Fournier G, Gunst S, Martin GL, et al. (2023) Delaying anterior cruciate ligament reconstruction increases the rate and severity of medial chondral injuries. *Bone Joint J* 105-b:953-960
19. Carrozzo A, Saithna A, Ferreira A, Guy S, Chadli L, Monaco E, et al. (2022) Presoaking ACL Grafts in Vancomycin Decreases the Frequency of Postoperative Septic Arthritis: A Cohort Study of 29,659 Patients, Systematic Review, and Meta-analysis From the SANTI Study Group. *Orthop J Sports Med* 10:232596712111073928
20. Churruca K, Pomare C, Ellis LA, Long JC, Henderson SB, Murphy LED, et al. (2021) Patient-reported outcome measures (PROMs): A review of generic and condition-specific measures and a discussion of trends and issues. *Health Expect* 24:1015-1024
21. Cooper JK (1976) Sweden's no-fault patient-injury insurance. *N Engl J Med* 294:1268-1270
22. Cosgarea AJ, Sebastianelli WJ, DeHaven KE (1995) Prevention of arthrofibrosis after anterior cruciate ligament reconstruction using the central third patellar tendon autograft. *Am J Sports Med* 23:87-92
23. Costa GG, Grassi A, Lo Presti M, Cialdella S, Zamparini E, Viale P, et al. (2021) White Blood Cell Count Is the Most Reliable Test for the Diagnosis of Septic Arthritis After Anterior Cruciate Ligament Reconstruction: An Observational Study of 38 Patients. *Arthroscopy* 37:1522-1530.e1522
24. Cristiani R, Janarv PM, Engström B, Edman G, Forssblad M, Stålmán A (2021) Delayed Anterior Cruciate Ligament Reconstruction Increases the Risk of Abnormal Prereconstruction Laxity, Cartilage, and Medial Meniscus Injuries. *Arthroscopy* 37:1214-1220
25. Daniel DM, Malcom LL, Losse G, Stone ML, Sachs R, Burks R (1985) Instrumented measurement of anterior laxity of the knee. *J Bone Joint Surg Am* 67:720-726
26. Diermeier T, Rothrauff BB, Engebretsen L, Lynch AD, Ayeni OR, Paterno MV, et al. (2020) Treatment after anterior cruciate ligament injury: Panther Symposium ACL Treatment Consensus Group. *Knee Surg Sports Traumatol Arthrosc* 28:2390-2402
27. Fairbank TJ (1948) Knee joint changes after meniscectomy. *J Bone Joint Surg Br* 30b:664-670
28. Frobell RB, Roos EM, Roos HP, Ranstam J, Lohmander LS (2010) A randomized trial of treatment for acute anterior cruciate ligament tears. *N Engl J Med* 363:331-342
29. Gagnier JJ (2017) Patient reported outcomes in orthopaedics. *J Orthop Res* 35:2098-2108
30. Getgood A, Spalding T (2012) The evolution of anatomic anterior cruciate ligament reconstruction. *Open Orthop J* 6:287-294
31. Granan LP, Forssblad M, Lind M, Engebretsen L (2009) The Scandinavian ACL registries 2004-2007: baseline epidemiology. *Acta Orthop* 80:563-567
32. Hassebrock JD, Gulbrandsen MT, Asprey WL, Makovicka JL, Chhabra A (2020) Knee Ligament Anatomy and Biomechanics. *Sports Med Arthrosc Rev* 28:80-86
33. Hettrich CM, Dunn WR, Reinke EK, Group M, Spindler KP (2013) The rate of subsequent surgery and predictors after anterior cruciate ligament reconstruction: two- and 6-year follow-up results from a multicenter cohort. *Am J Sports Med* 41:1534-1540
34. Ingelsrud LH, Granan LP, Terwee CB, Engebretsen L, Roos EM (2015) Proportion of Patients Reporting Acceptable Symptoms or Treatment Failure and Their Associated KOOS Values at 6 to 24 Months After Anterior Cruciate Ligament Reconstruction: A Study From the Norwegian Knee Ligament Registry. *Am J Sports Med* 43:1902-1907
35. Irrgang JJ, Anderson AF, Boland AL, Harner CD, Kurosaka M, Neyret P, et al. (2001) Development and validation of the international knee documentation committee subjective knee form. *Am J Sports Med* 29:600-613

36. Jonsson PM, Tomson G, Raf L (2000) Reducing error, improving safety. No fault compensation protects patients in Nordic countries. *BMJ* 321:506
37. Judd D, Bottoni C, Kim D, Burke M, Hooker S (2006) Infections following arthroscopic anterior cruciate ligament reconstruction. *Arthroscopy* 22:375-384
38. Kasina P, Enocson A, Lindgren V, Lapidus LJ (2018) Patient claims in prosthetic hip infections: a comparison of nationwide incidence in Sweden and patient insurance data. *Acta Orthop* 89:394-398
39. Kohn MD, Sassoon AA, Fernando ND (2016) Classifications in Brief: Kellgren-Lawrence Classification of Osteoarthritis. *Clin Orthop Relat Res* 474:1886-1893
40. Kraeutler MJ, Wolsky RM, Vidal AF, Bravman JT (2017) Anatomy and Biomechanics of the Native and Reconstructed Anterior Cruciate Ligament: Surgical Implications. *J Bone Joint Surg Am* 99:438-445
41. Kraus Schmitz J, Lindgren V, Edman G, Janarv PM, Forssblad M, Stålmán A (2021) Risk Factors for Septic Arthritis After Anterior Cruciate Ligament Reconstruction: A Nationwide Analysis of 26,014 ACL Reconstructions. *Am J Sports Med* 49:1769-1776
42. Kursumovic K, Charalambous CP (2016) Graft salvage following infected anterior cruciate ligament reconstruction: a systematic review and meta-analysis. *Bone Joint J* 98-B:608-615
43. Lee YS, Lee OS, Lee SH, Hui TS (2018) Effect of the Timing of Anterior Cruciate Ligament Reconstruction on Clinical and Stability Outcomes: A Systematic Review and Meta-analysis. *Arthroscopy* 34:592-602
44. Li Z (2022) Efficacy of Repair for ACL Injury: A Meta-analysis of Randomized Controlled Trials. *Int J Sports Med* 43:1071-1083
45. Liukkonen R, Vaajala M, Mattila VM, Reito A (2023) Prevalence of post-traumatic osteoarthritis after anterior cruciate ligament injury remains high despite advances in surgical techniques. *Bone Joint J* 105-b:1140-1148
46. Löf. Annual report of the national insurance company in 2022. Access via <http://lof.se/filer/>.
47. Ludvigsson JF, Otterblad-Olausson P, Pettersson BU, Ekblom A (2009) The Swedish personal identity number: possibilities and pitfalls in healthcare and medical research. *Eur J Epidemiol* 24:659-667
48. Lysholm J, Tegner Y (2007) Knee injury rating scales. *Acta Orthop* 78:445-453
49. Maffulli N, Binfield PM, King JB, Good CJ (1993) Acute haemarthrosis of the knee in athletes. A prospective study of 106 cases. *J Bone Joint Surg Br* 75:945-949
50. Magit D, Wolff A, Sutton K, Medvecky MJ (2007) Arthrofibrosis of the knee. *J Am Acad Orthop Surg* 15:682-694
51. Mahapatra P, Horriat S, Anand BS (2018) Anterior cruciate ligament repair - past, present and future. *J Exp Orthop* 5:20
52. Makhni EC, Steinhaus ME, Mehran N, Schulz BS, Ahmad CS (2015) Functional Outcome and Graft Retention in Patients With Septic Arthritis After Anterior Cruciate Ligament Reconstruction: A Systematic Review. *Arthroscopy* 31:1392-1401
53. Mayr HO, Weig TG, Plitz W (2004) Arthrofibrosis following ACL reconstruction--reasons and outcome. *Arch Orthop Trauma Surg* 124:518-522
54. Mohtadi N, Barber R, Chan D, Paolucci EO (2016) Complications and Adverse Events of a Randomized Clinical Trial Comparing 3 Graft Types for ACL Reconstruction. *Clin J Sport Med* 26:182-189
55. Mohtadi N, Chan D, Barber R, Paolucci EO (2016) Reruptures, Reinjuries, and Revisions at a Minimum 2-Year Follow-up: A Randomized Clinical Trial Comparing 3 Graft Types for ACL Reconstruction. *Clin J Sport Med* 26:96-107
56. Muller B, Yabroudi MA, Lynch A, Lai CL, van Dijk CN, Fu FH, et al. (2016) Defining Thresholds for the Patient Acceptable Symptom State for the IKDC Subjective Knee Form and KOOS for Patients Who Underwent ACL Reconstruction. *Am J Sports Med* 44:2820-2826

57. Munch DRK, Hansen TI, Mikkelsen KL, Krogsgaard MR (2019) Complications and technical failures are rare in knee ligament reconstruction: analyses based on 31,326 reconstructions during 10 years in Denmark. *Knee Surg Sports Traumatol Arthrosc* 27:2672-2679
58. Nordenvall R, Bahmanyar S, Adami J, Stenros C, Wredmark T, Fellander-Tsai L (2012) A population-based nationwide study of cruciate ligament injury in Sweden, 2001-2009: incidence, treatment, and sex differences. *Am J Sports Med* 40:1808-1813
59. Nyrhinen KM, Bister V, Helkamaa T, Schlenzka A, Sandelin H, Sandelin J, et al. (2019) Anterior cruciate ligament reconstruction-related patient injuries: a nationwide registry study in Finland. *Acta Orthop* 90:596-601
60. O'Donoghue DH (2007) Surgical treatment of fresh injuries to the major ligaments of the knee. 1950. *Clin Orthop Relat Res* 454:23-26; discussion 14
61. Olsson O, Isacson A, Englund M, Frobell RB (2016) Epidemiology of intra- and peri-articular structural injuries in traumatic knee joint hemarthrosis - data from 1145 consecutive knees with subacute MRI. *Osteoarthritis Cartilage* 24:1890-1897
62. Palmer I (2007) On the injuries to the ligaments of the knee joint: a clinical study. 1938. *Clin Orthop Relat Res* 454:17-22; discussion 14
63. Piriyaarasath P, Morris ME (2007) Psychometric properties of measurement tools for quantifying knee joint position and movement: a systematic review. *Knee* 14:2-8
64. Prodromidis AD, Drosatou C, Mourikis A, Sutton PM, Charalambous CP (2022) Relationship Between Timing of Anterior Cruciate Ligament Reconstruction and Chondral Injuries: A Systematic Review and Meta-analysis. *Am J Sports Med* 50:3719-3731
65. Pukk-Harenstam K, Ask J, Brommels M, Thor J, Penalzoa RV, Gaffney FA (2009) Analysis of 23 364 patient-generated, physician-reviewed malpractice claims from a non-tort, blame-free, national patient insurance system: lessons learned from Sweden. *Postgrad Med J* 85:69-73
66. Quelard B, Sonnery-Cottet B, Zayni R, Ogassawara R, Prost T, Chambat P (2010) Preoperative factors correlating with prolonged range of motion deficit after anterior cruciate ligament reconstruction. *Am J Sports Med* 38:2034-2039
67. Rabin R, de Charro F (2001) EQ-5D: a measure of health status from the EuroQol Group. *Ann Med* 33:337-343
68. Randsborg PH, Bukholm IRK, Jakobsen RB (2018) Compensation after treatment for anterior cruciate ligament injuries: a review of compensation claims in Norway from 2005 to 2015. *Knee Surg Sports Traumatol Arthrosc* 26:628-633
69. Regions SaoLaa. Health quality registers. Access via <https://skr.se/en/kvalitetsregister/>.
70. Register Skl. The annual report. Access via [www.aclregister.nu](http://www.aclregister.nu). 2022.
71. Reid A, Birmingham TB, Stratford PW, Alcock GK, Giffin JR (2007) Hop testing provides a reliable and valid outcome measure during rehabilitation after anterior cruciate ligament reconstruction. *Phys Ther* 87:337-349
72. Reinholdsson J, Kraus-Schmitz J, Forsblad M, Edman G, Bytner M, Stålman A (2017) A non-response analysis of 2-year data in the Swedish Knee Ligament Register. *Knee Surg Sports Traumatol Arthrosc* 25:2481-2487
73. Roos EM, Boyle E, Frobell RB, Lohmander LS, Ingelsrud LH (2019) It is good to feel better, but better to feel good: whether a patient finds treatment 'successful' or not depends on the questions researchers ask. *Br J Sports Med* 53:1474-1478
74. Roos EM, Lohmander LS (2003) The Knee injury and Osteoarthritis Outcome Score (KOOS): from joint injury to osteoarthritis. *Health Qual Life Outcomes* 1:64
75. Ross JJ (2017) Septic Arthritis of Native Joints. *Infect Dis Clin North Am* 31:203-218
76. Røtterud JH, Risberg MA, Engebretsen L, Årøen A (2012) Patients with focal full-thickness cartilage lesions benefit less from ACL reconstruction at 2-5 years follow-up. *Knee Surg Sports Traumatol Arthrosc* 20:1533-1539

77. Runer A, Roberti di Sarsina T, Starke V, Ilchev A, Felmet G, Braun S, et al. (2021) The evaluation of Rolimeter, KLT, KiRA and KT-1000 arthrometer in healthy individuals shows acceptable intra-rater but poor inter-rater reliability in the measurement of anterior tibial knee translation. *Knee Surg Sports Traumatol Arthrosc* 29:2717-2726
78. Rushdi I, Sharifudin S, Shukur A (2019) Arthrofibrosis Following Anterior Cruciate Ligament Reconstruction. *Malays Orthop J* 13:34-38
79. Shelbourne KD, Wilckens JH, Mollabashy A, DeCarlo M (1991) Arthrofibrosis in acute anterior cruciate ligament reconstruction. The effect of timing of reconstruction and rehabilitation. *Am J Sports Med* 19:332-336
80. Shirtliff ME, Mader JT (2002) Acute septic arthritis. *Clin Microbiol Rev* 15:527-544
81. Snaebjörnsson T, Hamrin-Senorski E, Svantesson E, Karlsson L, Engebretsen L, Karlsson J, et al. (2019) Graft Diameter and Graft Type as Predictors of Anterior Cruciate Ligament Revision: A Cohort Study Including 18,425 Patients from the Swedish and Norwegian National Knee Ligament Registries. *J Bone Joint Surg Am* 101:1812-1820
82. Socialstyrelsen. The cause of death register. Access via <https://www.socialstyrelsen.se/en/statistics-and-data/statistics/statistical-databases/>.
83. Sokal PA, Norris R, Maddox TW, Oldershaw RA (2022) The diagnostic accuracy of clinical tests for anterior cruciate ligament tears are comparable but the Lachman test has been previously overestimated: a systematic review and meta-analysis. *Knee Surg Sports Traumatol Arthrosc* 30:3287-3303
84. Sumner W, 2nd (2010) Health and life insurance as an alternative to malpractice tort law. *BMC Health Serv Res* 10:150
85. Takahashi M, Doi M, Abe M, Suzuki D, Nagano A (2006) Anatomical study of the femoral and tibial insertions of the anteromedial and posterolateral bundles of human anterior cruciate ligament. *Am J Sports Med* 34:787-792
86. Tourdias D (2017) Second fracture. *Joint Bone Spine* 84:357
87. Urhausen AP, Berg B, Øiestad BE, Whittaker JL, Culvenor AG, Crossley KM, et al. (2022) Measurement properties for muscle strength tests following anterior cruciate ligament and/or meniscus injury: What tests to use and where do we need to go? A systematic review with meta-analyses for the OPTIKNEE consensus. *Br J Sports Med* 56:1422-1431
88. Vermeijden HD, van der List JP, Benner JL, Rademakers MV, Kerkhoffs G, DiFelice GS (2022) Primary repair with suture augmentation for proximal anterior cruciate ligament tears: A systematic review with meta-analysis. *Knee* 38:19-29
89. von Essen C, Eriksson K, Barenius B (2020) Acute ACL reconstruction shows superior clinical results and can be performed safely without an increased risk of developing arthrofibrosis. *Knee Surg Sports Traumatol Arthrosc* 28:2036-2043
90. von Porat A, Roos EM, Roos H (2004) High prevalence of osteoarthritis 14 years after an anterior cruciate ligament tear in male soccer players: a study of radiographic and patient relevant outcomes. *Ann Rheum Dis* 63:269-273
91. Welfare NBoHa The national prescribed drug register. Access via <https://www.socialstyrelsen.se/en/statistics-and-data/registers/national-prescribed-drug-register/>.
92. Welfare NBoHa. The national patient register. Access via <https://www.socialstyrelsen.se/globalassets/sharepoint-dokument/>.
93. Wiggins AJ, Grandhi RK, Schneider DK, Stanfield D, Webster KE, Myer GD (2016) Risk of Secondary Injury in Younger Athletes After Anterior Cruciate Ligament Reconstruction: A Systematic Review and Meta-analysis. *Am J Sports Med* 44:1861-1876
94. Woo SL, Debski RE, Withrow JD, Jansushek MA (1999) Biomechanics of knee ligaments. *Am J Sports Med* 27:533-543

95. Zsidai B, Narup E, Senorski EH, Lind M, Spalding T, Musahl V, et al. (2022) The Knee Injury and Osteoarthritis Outcome Score: shortcomings in evaluating knee function in persons undergoing ACL reconstruction. *Knee Surg Sports Traumatol Arthrosc* 30:3594-3598

