

From the Department of Molecular Medicine and Surgery
Karolinska Institutet, Stockholm, Sweden

**Breast cancer in young women - aspects on mortality and
local recurrence**

Hanna Fredholm



**Karolinska
Institutet**

Stockholm 2017

Cover: Painting by Lennart Roquet “Untitled”© photographer Stefan Ljungstedt.
All previously published papers were reproduced with permission from the publisher.
Published by Karolinska Institutet
Printed by E-Print AB 2017
© Hanna Fredholm 2017
ISBN 978-91-7676-579-1

Institutionen för Molekylär Medicin och Kirurgi

Breast cancer in young women - aspects on mortality and local recurrence

av

Hanna Fredholm

AKADEMISK AVHANDLING (Ph.D.)

som för avläggande av medicine doktorsexamen vid Karolinska Institutet
offentligen försvaras i Leksell-salen, Eugeniahemmet, T3:02, Karolinska
Universitetssjukhuset Solna

Fredagen den 7 april 2017, kl 09.00



**Karolinska
Institutet**

Principal Supervisor:

MD PhD Irma Fredriksson
Karolinska Institutet
Department of Molecular Medicine and
Surgery
Unit of Breast Surgery

Co-supervisors:

Professor Jan Frisell
Karolinska Institutet
Department of Molecular Medicine and
Surgery
Unit of Breast Surgery

Professor Lars Holmberg
Uppsala University
Department of Surgical Sciences
Division of Endocrine Surgery

Opponent:

Professor Lisa Rydén
Lund University
Institution of Clinical Sciences Lund
Department of Surgery

Examination Board:

Associate Professor Karin Ekström Smedby
Karolinska Institutet
Department of Medicine Solna
Unit of Clinical Epidemiology

MD PhD Hege Russnes
Oslo University Hospital
Institute for Cancer Research
Department of Cancer Genetics, and
Department of Pathology

Associate Professor Theodoros Foukakis
Karolinska Institutet
Department of Oncology-Pathology

To women

ABSTRACT

The general aim of the thesis was to gain increased insight into the long-term prognosis for young women with breast cancer.

In a population-based cohort of 22,017 women with breast cancer, we studied prognosis by age. Women aged <35 (n=471), 35–39 (n=858) and 40–49 (n=4789) were compared with women aged 50–69. The cumulative 5-year relative survival ratio (RSR) and the relative excess risk (RER) of mortality were calculated. Women <35 years of age had a worse survival than middle-aged women, partly explained by a later stage at diagnosis. After correction for stage, tumor characteristics and treatment, young age remained an independent risk factor for death. The excess risk of death in young women was only present in stage I-II disease and was most pronounced in women with small tumors.

For in-depth studies on a large subpopulation from the original cohort (all 471 women aged <35 and a random sample of 700 women aged 35–69), we collected detailed data from the medical records, re-evaluated slides and produced TMAs from tumor tissue. Breast cancer-specific survival (BCSS), distant disease-free survival (DDFS) and locoregional recurrence-free survival (LRFS) by age were analysed. In a multivariate analysis, age <35 and age 35–39 years conferred a risk in LRFS but not in DDFS and BCSS. The age-related differences in prognosis were most pronounced in early stage luminal Her2-negative tumors, where low age was an independent prognostic factor also for DDFS (HR 1.87 (1.03–3.44)).

To study the importance of proliferation markers for the long-term prognosis in young women, protein expression of Ki-67, cyclin A2, B1, D1 and E1 was analysed in 504 women aged <40 and in 383 women aged ≥40. The higher expression of proliferation markers in young women did not have a strong impact on the prognosis. Proliferation markers are less important in young women, and Ki-67 was prognostic only in young women with Luminal PR+ tumors. Age <40 years was an independent risk factor of DDFS exclusively in this subgroup (adjusted HR 2.35 (1.22–4.50)). The only cyclin adding prognostic value beyond subtype in young women was cyclin E1.

In a cohort of 469 women aged <40 and 360 women aged ≥40 we examined whether Her2 status assessed by silver enhanced *in situ* hybridization (SISH) for all cases, would reveal a proportion of women undiagnosed by routine Her2 testing and whether this would affect their prognosis. With SISH testing for all women, the Her2-positive rate increased from 20.0% to 24.4% ($p<0.001$), and similarly for women aged <40 and ≥40 years. Young women had Her2+ breast cancer twice as often as middle-aged women. Her2 amplification was present in 4.6% of cases scored 0 with IHC, while the corresponding proportions for scores 1+, 2+ and 3+ were 36.0%, 83.7% and 96.8%, respectively. All Her2 amplified cases, both true positive and false negative, had a significantly worse BCSS than the true negative cases.

LIST OF SCIENTIFIC PAPERS

- I. Fredholm H, Eaker S, Frisell J, Holmberg H, Fredriksson I*, Lindman H*. Breast Cancer in Young Women: Poor Survival Despite Intensive Treatment. PLoS ONE 2009; 4(11): e7695 (*contributed equally)
- II. Fredholm H, Magnusson K, Lindström LS, Garmo H, Eaker Fält S, Lindman H, Bergh J, Holmberg L, Pontén F, Frisell J, Fredriksson I. Long-term Outcome in Young Women With Breast Cancer – a Population-based Study. Breast Cancer Res Treat 2016; 160(1): 131-143.
- III. Fredholm H, Magnusson K, Lindström LS, Tobin NP, Lindman H, Bergh J, Holmberg L, Pontén F, Frisell J, Fredriksson I. Breast cancer in young women and prognosis – how important are proliferation markers? Submitted.
- IV. Fredholm H, Pontén F, Hikmet Noraddin F, Bergh J, Frisell J, Holmberg L, Fredriksson I. Her2 positive breast cancer in young women – the prognostic impact of Her2 expression by immunohistochemistry versus silver in situ hybridization (SISH) in a population-based cohort. In manuscript.

CONTENTS

LIST OF ABBREVIATIONS	
BACKGROUND.....	1
Definition of young age.....	1
Epidemiology.....	1
Risk factors for developing breast cancer at a young age.....	2
Previous chest radiation therapy.....	2
Family history.....	2
BRCA1/2 mutations.....	3
Breast density.....	3
Reproductive factors.....	3
Intrauterine exposure.....	4
Obesity.....	4
Alcohol and smoking.....	4
Diagnostic procedures in young women.....	4
Clinical examination.....	4
Breast imaging.....	4
Cytology and histopathology.....	5
Screening.....	5
Tumor characteristics in young women.....	6
Histological type.....	6
Stage.....	6
Grade.....	6
Hormonal receptors.....	7
Her2.....	8
Proliferation.....	8
LVI.....	9
Subtype.....	9
BRCA associated breast cancer.....	10
Treatment.....	11
Breast surgery.....	11
Axillary surgery.....	11
Chemotherapy.....	12
Endocrine therapy.....	13
Anti-Her2 treatment.....	13
Radiotherapy.....	14
Risk prediction models.....	14
Local recurrence.....	15
Distant recurrence.....	15
Contralateral breast cancer.....	16
Fertility and pregnancy.....	16
Quality of Life.....	17
AIMS OF THE THESIS.....	19
PATIENTS AND METHODS.....	21
Data sources.....	21
The National Breast Cancer Quality Registry.....	21
The Swedish Cancer Registry.....	21
The Swedish Causes of Death Registry.....	21

The Total Population Registry.....	22
Study population.....	22
Methods.....	24
Clinical data.....	24
Tumor tissue.....	25
Definition of subtypes.....	26
Statistical analysis.....	26
RESULTS.....	29
Study I.....	29
Study II.....	30
Study III.....	32
Study IV.....	34
DISCUSSION.....	39
Methodological considerations.....	39
Study I.....	41
Study II.....	42
Study III.....	44
Study IV.....	46
CONCLUSIONS.....	49
FUTURE PERSPECTIVES.....	51
SVENSK SAMMANFATTNING.....	53
ACKNOWLEDGMENTS.....	55
REFERENCES.....	59

LIST OF ABBREVIATIONS

AI	Aromatase Inhibitor
BCS	Breast conserving surgery
BCSS	Breast cancer-specific survival
BI-RADS	Breast imaging reporting and data system
BMI	Body Mass Index
BRCA	Breast Cancer gene
CI	Confidence Interval
CISH	Chromogenic In Situ Hybridization
CBC	Contralateral Breast Cancer
CMF	Cyclophosphamide, Methotrexate and 5-Fluorouracil
DCIS	Ductal Cancer In Situ
DDFS	Distant disease free survival
EIC	Extensive Intraductal Component
EGFR	Epidermal Growth Factor Receptor
ER	Estrogen Receptor
FFPE	Formalin Fixed Paraffin Embedded
FISH	Fluorescence In Situ Hybridization
GEP	Gene Expression Profiling
GnRH	Gonadotropin-Releasing Hormone
Her2	Human Epidermal growth factor Receptor 2
HR	Hazard Ratio
ICD	International Classification of Disease
IHC	Immunohistochemistry
LRFS	Locoregional-Recurrence Free
LR	Local Recurrence
LVI	Lymphovascular invasion
MRI	Magnetic Resonance Imaging
OFS	Ovarian Function Suppression
PABC	Pregnancy Associated Breast Cancer
PCR	Pathological Complete Response
PIN	Personal Identification Number
PR	Progesterone Receptor
QoL	Quality of Life
RER	Relative excess ratio
RSR	Relative survival ratio
SEER	Surveillance Epidemiology and End Results
SISH	Silver enhanced In Situ Hybridization
TAC	docetaxel, adriamycin and cyclophosphamide
TMA	Tissue Micro Array
TN	Triple-negative
<i>vs</i>	versus

BACKGROUND

Definition of young age

In the scientific literature, there are several definitions of young age in breast cancer: <35 years, <40 years, <50 years or premenopausal. In reality, it seems that age is a continuous variable and, the narrower definition applied, the larger will the age-related differences be. When diagnosed with breast cancer, women <35 and <40 years old share the same tumor characteristics and have a similar prognosis [1-3], whereas women 40-49 years old have the best survival rate from breast cancer [1,4]. Thus, a cut-off at age 50 will dilute the age-related differences. Age, rather than menopausal status, reflects the biological and aetiological entities associated with breast cancer in young women [5].

Epidemiology

The median age at a breast cancer diagnosis in Sweden is 63. The risk of being diagnosed with breast cancer (cumulative incidence) before age 75 is 10.5%, or 1 in 9.5 women. Breast cancer in young women is rare, with a cumulative incidence at age 45 of 1.1%, or 1 in 91 women [6]. In 2015, 417 women <40 years old (4.0% of all diagnosed cases) and 143 women <35 years old (1.5%) were diagnosed with breast cancer in Sweden [6]. That is in line with the rates in the Nordic countries as a whole (4.0%) [7], as well as in Europe (5.4%) and North America (5.6%) [8]. In South America, Asia and Africa, the longevity is shorter, which explains a larger proportion of young women with breast cancer in these parts of the world (**Figure 1**).

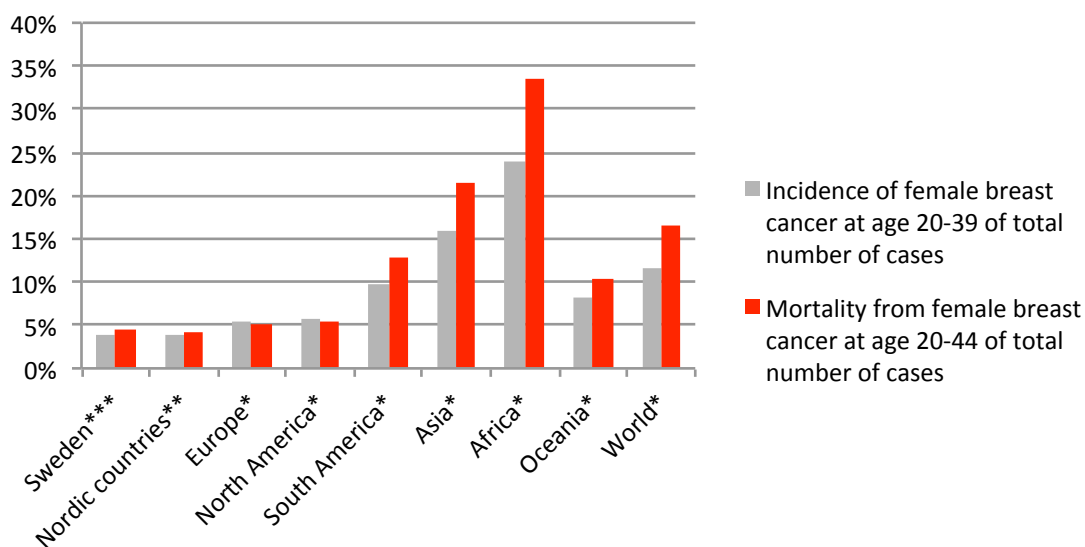


Figure 1. Incidence of breast cancer at age 20–39 and mortality by geographic region. Grey bars indicate incidence, given as the proportion of all cases of female breast cancer. Red bars indicate mortality attributed to breast cancer, including a 5-year delay from diagnosis at age 20–44. *[8], **[7], ***[6,9]

In Sweden, the incidence of breast cancer has increased by 1.6% per year during the last 20 years. For young women, however, there has been no increase, but rather a stable incidence of 20-23 new cases per 100,000 women [6]. From a global perspective, there has been a dramatic increase in the incidence of breast cancer, with a rise of 43.0% from 2005 to 2015 [10]. This increase is due to population growth (12.6%), to change in age structure (15%) and to a true change in the incidence rate (14.9%). A study based on the Surveillance Epidemiology and End Results (SEER) data showed that between 2000 and 2009, the incidence of oestrogen (ER)+ breast cancer increased in women <40 years, while the incidence of ER- breast cancer decreased [11].

Despite breast cancer being rare in young women, it is the most frequent type of cancer diagnosed in this age group. In Swedish women aged 20-39, breast cancer accounted for 27.2% (386 of 1417) of all cancers diagnosed. The corresponding proportion for women of all ages was 31.4% (9730 of 30970) [6].

Although the incidence has increased over time, the mortality has decreased considerably over the last few decades due to early diagnosis and better treatment. In young women, however, breast cancer is still the leading cause of death from cancer and the third most common cause of death overall after suicide and road injuries [9].

Risk factors for developing breast cancer at a young age

Breast cancer in young women has a somewhat different panorama of risk factors to those in middle-aged women. Young women have a shorter exposure to risk factors associated with the disease, but they may instead be more sensitive to some risk factors. Many of these risk estimates concern young women in a wider perspective, defined as premenopausal women.

Previous chest radiotherapy

Women with previous radiotherapy at a young age (10-30 years) have about 6 times as high a risk to develop breast cancer as in the general population of young women [12,13]. They more often develop bilateral breast cancer and receptor negative tumors [12].

Family history

Family history is a strong risk factor for women <40 years old. The risk is higher with an increasing number of first-degree relatives with breast or ovarian cancer and if the relatives are young at diagnosis [14]. If a woman <40 years old has one relative with breast cancer before age 40, her risk is almost 6-fold, decreasing to 2-fold if the relative is ≥ 60 years old at diagnosis [15]. A positive family history is present in almost 50% of the young women with breast cancer [16], but it is not a risk factor for worse survival [17].

***BRCA1/2* mutations**

In the general population, *BRCA1/2* mutations are very rare. Only 0.2% of women are generally estimated to be *BRCA1/2* mutation carriers. Translated into the Swedish female population of 4.9 million women (2016), this means that 9800 women can be estimated to be *BRCA1/2* mutation carriers [18]. While the cumulative incidence of breast cancer for an unaffected 70-year-old woman is 10%, the risk is 6-fold (60%) for a *BRCA1* mutation carrier of the same age. The cumulative incidence of breast cancer for a 40-year-old woman is generally 1%, while for a *BRCA1* mutation carrier the corresponding risk is 20% (a 20-fold increase) [6,19].

Breast density

Breast density is a strong independent risk factor for the development of breast cancer, and is associated with a 4-fold increased risk of the disease [20,21]. Breast density is a risk factor for breast cancer for women both <50 and ≥50 years old, according to a meta-analysis [21]. Breast density seems to be a proxy for a combination of genetic, hormonal and lifestyle risk factors predicting breast cancer. Breast density decreases with increasing age, but a woman with high breast density at age 40 will persist with a high baseline density throughout life, indicating that a high risk for breast cancer later in life can already be identified at a young age [22]. Dense breast tissue is over-represented in young women. In a study of 7000 mammograms, 81% of the women <40 years old had dense breasts. The proportions for women aged 40-49, 50-59 and 60-69 years were 57%, 57% and 45%, respectively [23]. Dense breast tissue is related to both the risk of being young at the diagnosis of breast cancer, as well as the outcome of breast cancer, and thereby constitutes a classical confounder.

Breast density is highly inheritable. Twin-studies have identified about 60% of dense breast to be ascribable to inherited genetic factors [24]. Breast density also carries a risk for breast cancer in women with *BRCA* mutations, as they have a higher proportion of high breast density than non-carriers [25,26].

Reproductive factors

In a large meta-analysis of risk factors for breast cancer in women aged 40-49 years, reproductive factors contributed only modestly with a 1.0 to 1.5-fold increased risk. The following reproductive factors were defined as risk factors: early menarche, age ≥30 years at first full-term pregnancy, <3 births or nullipara [14]. Breastfeeding and the duration thereof reduce the breast cancer risk in young women [5,14,27].

Oral contraceptives increase the risk of breast cancer in young women. A lifetime use exceeding 15 years increases the risk 1.5-fold for women aged 20-44. Current use for 5 years or longer increases the risk for triple-negative (TN) breast cancer in women aged 20-39 almost 4-fold [28]. In vitro fertilization does not increase the risk of breast cancer [29].

Intrauterine exposure

High birthweight (≥ 4 kg versus < 3 kg) increases the risk of breast cancer 6-fold [30], with a stronger association for premenopausal presentation [31]. The mechanism is thought to be an oestrogen-mediated stimulation of mammary stem cells [32]. Also tall height at 8 years of age is associated with an increased risk of both premenopausal and postmenopausal breast cancer [31].

Obesity

Obesity increases the risk of postmenopausal breast cancer, but it is a protective factor for premenopausal women [33,34].

Alcohol and smoking

Alcohol and smoking are not risk factors for breast cancer in women aged 40-49 [14].

Diagnostic procedures in young women

Clinical examination

A palpable breast mass or lump in the breast is most often the first symptom of breast cancer in young women. The first presentation can also be nipple discharge or a lump in the axilla [35]. In a study on women < 35 years old with breast cancer, only 37% of the cases yielded a strong suspicion of cancer at palpation, while another 20% were undeterminable and 43% were considered to be benign (most frequently with a fibroadenoma-like palpation finding) [36]. In a population-based study, 98% of the women < 40 years of age were detected clinically [37].

Breast imaging

Due to a higher proportion of patients with dense breast tissue among young women breast imaging is more difficult in young women than in older ones. In one study, the sensitivity of mammography was 30% in extremely dense breasts compared to 80% in predominantly fatty breasts [38]. Ultrasound has been shown to be superior as a first-line breast imaging technique up to age 45, correlating with a shift in the hormonal milieu by this age [39]. If ultrasound indicates a suspect malignancy (BI-RADS 3-5), the next step is a complementary mammography.

MRI does not improve primary breast cancer diagnostics in normal-risk women (median ages, 50–63 years), but it increases mastectomy rates with more harm than good [40]. Nor does an MRI assessment in the primary investigation prevent future local recurrences [41] when assessed in women aged 49–64. MRI has been shown to be beneficial as a screening method in young women with a high risk of breast cancer [42], but it has not been determined whether or not it is beneficial in the primary breast cancer diagnostics of normal-risk women < 40 years old. In a small study on women < 50 years old with breast cancer, MRI

did detect additional disease, leading to improved management in 44% of the cases, to no change in another 44%, and to excessively extensive surgery in 12% of cases [43]. A study on 440 women <56 years old with breast cancer randomized to MRI or not resulted in a 11% lower breast reoperation rate in the MRI group, but no differences in the overall mastectomy rate between the groups were noted [44].

New diagnostic tools, such as Automated Breast Ultrasound (ABUS), can probably improve early diagnosis in young women as it is more sensitive in dense breast tissue than conventional mammography. The technique has a standardized protocol and can be performed by medical personnel and then interpreted afterwards by the radiologist. Adding ABUS to screening mammography increased the cancer detection rate by 37% in an American study [45] and by 57% in a Swedish study [46].

Cytology and histopathology

The use of cytology and histopathology for confirmation as a part of the triple assessment is especially important in young women since both clinical examination and imaging have less sensitivity. Fine-needle aspiration has a high sensitivity (93–96%) in young women [36,47]. A histopathological confirmation to get information on tumor characteristics is important in young women as they have a large proportion of tumors that respond to neoadjuvant chemotherapy [48]. Knowledge of tumor characteristics at diagnosis is also important for raising the suspicion of the woman having a *BRCA* mutation, thereby gaining sufficient time for genetic testing before initiating radiotherapy.

Screening

Breast cancer screening is highly evidence-based and reduces breast cancer mortality by 25% when asymptomatic women aged 50–69 years are invited biannually [49]. As for younger women, several randomized trials from Sweden and the UK have shown the benefit of screening to be approximately 16% for women starting at age 40 with an interval between examinations of 12–18 months [50,51]. At long-term follow-up (24 years), the reduction of mortality increased to 40%, which is a larger reduction than in older women and can possibly be explained by a shorter screening interval in the younger age group [52].

General screening for women <40 years old is not an option because of the low prevalence of breast cancer in this age group. Young women can be included in high-risk screening programs if they meet any of following criteria: a lifetime risk of breast cancer exceeding 20–25%, being a carrier of a *BRCA* mutation, being a first-degree relative of someone carrying a *BRCA* mutation or having a history of chest radiation during ages 10–30. The screening modality for women <40 years old meeting these criteria is an annual MRI [42,53], whereas mammography does not seem to add any value in this context [54].

Tumor characteristics in young women

Histological type

Ductal carcinoma is the most common histological type in women <40 years old (nearly 90% of tumors) [37,55-58]. In women >60 years old, this proportion is about 70% [56]. Lobular carcinoma is uncommon in young women, but it increases in incidence with age (**Table 1**) [59]. A classic lobular carcinoma is ER+ (90%), PR+ (60-70%) and grade II with low Ki67 [60], characteristics that are less common in young women. Generally speaking, medullary carcinoma is uncommon, but it is associated with young age, high grade, TN subtype [61] and *BRCAl* mutation [62]. Histological type is associated with prognosis. On comparing histological type and the 21-gene recurrence score, tumors of the ductal type more often had a high-risk recurrence score, and those of the lobular type, a low-risk recurrence score [63].

Stage

Young women are being diagnosed with breast cancer at more advanced stages, with both larger tumors and, more often, axillary lymph node involvement [64-68]. Young women are not included in screening programs. They have tumors with a higher proliferation rate and thus faster growth. Women with breast cancer aged <40 have a 3-fold higher risk of being diagnosed with high-stage disease [69]. Stage is one of the strongest prognostic indicators in breast cancer [70] and age-related differences in breast cancer survival have been shown to be present only in the early stages of disease. In the SEER dataset, age-related survival differences were studied in women diagnosed with breast cancer during 1988–2003 (n = 240,012). The authors found a higher risk for women <40 years of age to die from breast cancer if they were in stages I and II [66]. In another registry-based study including women with breast cancer diagnosed during 2005–2009 (n = 59,191) and with a mean follow-up time of only 3 years, no age-related differences in prognosis by stage at diagnosis were identified [71].

Nodal stage, or the number of involved axillary lymph nodes, has been known for decades as the most significant prognostic indicator in breast cancer [72,73]. Nodal stage is distributed differently across subtypes in young women: among those with luminal tumors, 44% had positive lymph nodes at diagnosis, with Her2+ tumors 65%, and with TN breast cancer only 31% [55]. Basal-like tumors with a known inferior survival have a lower risk of being lymph node-positive at diagnosis, compared to luminal tumors (HR 0.5–0.6) [74]. Women with triple-negative, lymph node- negative breast cancer had a worse 10-year distant disease-free survival than those with Luminal A, node-positive disease (55% vs 88%) [75]. It seems that nodal stage remains prognostic in all subtypes. Nodal stage and subtype cannot replace one another as prognostic factors [76,77].

Grade

Grade is based on morphological features of the cancer cells, including scores on tubular formation, nuclear pleomorphism and mitotic count, summed up to grades I–III [78]. Young

women have a higher proportion of high-grade tumors than older women [55,57,64,66,68,71,79,80]. For women <40 years old, grade III versus grades I–II carry an independent risk for breast-cancer specific and overall survival [71], but not for local recurrence [80].

Table 1. Tumor characteristics in women <35 and <40 years old at the diagnosis of breast cancer. The table is based on data from a literature overview including population-based studies and excluding duplicative publications based on the same cohort. Proportions are calculated on informative cases only.

	Age <35 years			Age <40 years		
	%	n/total	Reference	%	n/total	Reference
Tumor <2 cm	51.9%	927/1786	55,57,79	48.5%	12020/12692	56-58,64,71
Node neg	51.2%	922/1802	55,57,79	52.7%	14614/27717	56-58,64,71
Grade III	57.5%	1109/1930	55,57,79	57.3%	6568/11462	3,57,80,56,64
ER+	77.1%	243/315	79	60.0%	12952/21592	3,5,56,57,58,80
PR+	67.9%	214/315	79	53.2%	2777/5220	3,5,56,57,80
Her2+	25.0%	282/1130	55,57,79	24.7%	1395/5651	3,5,56,57,80
Ki67>20%	77.1%	239/310	79	no data available		
HR+Her2-	45.7%	1102/2410	55,71,79	50.1%	2191/4377	71
HR+Her2+	19.5%	471/2410	55,71,79	18.5%	811/4377	71
HR-Her2+	11.7%	281/2410	55,71,79	10.7%	469/4377	71
TN	23.1%	556/2410	55,71,79	20.7%	906/4377	71
Ductal	89.4%	1628/1821	55,57,79	87.6%	19354/22085	56-58,80
Lobular	1.7%	31/1821	55,57,79	4.5%	984/22085	56-58,80
LVI pos	43.1%	394/915	57,79	43.0%	2069/4811	57,64,80
Multifocal	19.2%	158/825	55	29.7%	779/2624	80
EIC pos	no data available			20.3%	557/2746	80

IHC, immunohistochemistry, ER estrogen receptor, PR progesterone receptor, HR hormonal receptor (ER/PR), TN triple negative, LVI lymphovascular invasion, EIC extensive in situ component

Hormonal receptors

The oestrogen receptor is expressed in several human tissues and over-expressed in breast cancer cells [81]. The presence or absence of ER in a tumor reflects rather the growth rate than the metastatic potential, and thereby rather the length of distant disease-free survival than overall survival [82]. ER is a strong predictor of the response to endocrine therapy [83-85]. Compared to middle-aged and elderly women, young women generally have a lower protein and gene expression of ER [59,86,87]. In clinical practice, ER has been measured by means of immunohistochemistry (IHC) since the late 1990s, with a cut-off of 1% to define a positive expression [88]. The former cut-off of 10% was changed into 1% in 2010 [89], while publications suggest tumors with ER 1-9% compared to ER>10% have an inferior survival, less response to endocrine therapy and are more often seen in young women [90,91].

The progesterone receptor expression is induced by oestrogen signaling via ER [92]. PR is lower in postmenopausal women as oestrogen levels decrease after the menopause [93]. While ER is a strong predictor of endocrine therapy, the predictive role of PR has been more in dispute [94-96], and until recently, it has been considered a marker of ER function [97]. More recent data indicate that PR functions as a 'proliferative brake' in ER+ breast cancer [98]. ER+PR+ breast cancer is associated with a better outcome than ER+PR- tumors [99-101]. PR is measured by IHC and a cut-off of 20% has been shown to be optimal [102].

Her2

Human epidermal growth factor receptor 2 is a gene coding for a signalling network controlling cellular proliferation, apoptosis, tumor cell motility and capacity for metastatic dissemination [103]. Amplification of the gene produces correspondingly high Her2 protein levels, which are seen in about 15-20% of women with primary breast cancer and which correlates with a worse survival [104]. Her2-positivity is 1.5-2 times as common in young women [3,5,57,71,77,79,105,106]. Her2 is analysed by IHC and the amount of Her2 receptor protein on the cancer cell surface gives a score of 0 to 3+. If the score is 0 to 1+, it is considered negative, while a score of 2+ is equivocal and a score of 3+ is positive. For equivocal cases, a confirmatory analysis is done using an *in situ* hybridization method that detects amplification of the Her2 gene [107]. A Swedish national survey of the reproducibility of Her2 analyses using IHC and FISH showed high quality and reproducibility using TMA-based samples [108].

Proliferation

Proliferation is a hallmark of cancer [109] and is prognostic in most cancer types. Proliferation markers are highly expressed in young women with breast cancer regardless of whether they are estimated by gene expression [59,110], grade [3,57,67,105], Ki-67 [79,111,112] or cyclins [113-117]. In clinical treatment decision-making for women with luminal (Her2-negative) breast cancer, proliferation is heavily relied on, and is most often measured by Ki-67 when gene-expression analyses are not available [48].

Ki-67 is a protein expressed during the whole cell cycle, except in G₀ [118]. In clinical practice, it is used to separate Luminal A from Luminal B subtype [48]. In order to find an IHC substitute for the molecular intrinsic subtypes, Cheang et al. compared gene expression-based subtypes with IHC and found a Ki-67 level of 14% to best define the cut-off between the Luminal A and Luminal B subtypes [119]. The best Ki-67 cut-off is still the subject of a major debate worldwide. According to the latest St Gallen Guidelines, a Ki-67 of 20–29% should be interpreted by local laboratory references, while a value of <10% is definitely considered low and >30% high [48].

Cyclins are a family of proteins that regulate cellular growth and division in both normal and malignant cells [120]. The regulation is mediated by cyclin-dependent kinases [121]. Cyclins

display subtype-specific expression in breast cancer [122-125] and are generally expressed in higher levels in young women [114-117,126].

Lymphovascular invasion

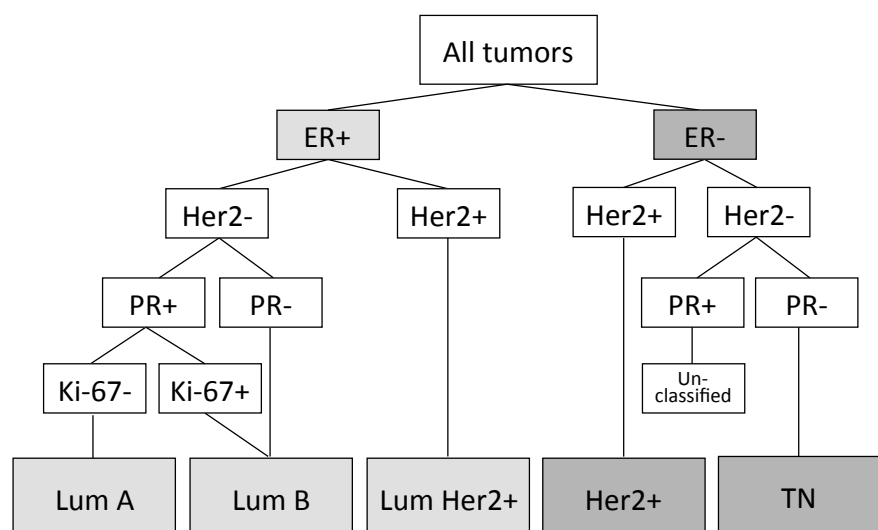
LVI is overrepresented in young women [57,64,127,128] (**Table 1**). LVI is a strong independent marker of a worse breast cancer-specific survival [129,130] and locoregional recurrence in young women [131,132]. LVI has also been shown to be predictive of the response to neoadjuvant chemotherapy [133], but, in treatment decisions, it is not in and of itself considered to be sufficient to move patients from a low-risk group to a high-risk group [134].

Subtype

When analysed with microarray-based gene expression, breast cancer comprises a heterogeneous group of tumors with different distinct molecular features. The intrinsic molecular subtypes were originally described by Perou and Sorlie et al. in year 2000 [135]. Based on hierarchical clustering on fresh-frozen tumor material, they identified four distinct subtypes with distinct gene expression patterns: Luminal, Her2-enriched, Basal-like and normal-breast-like. Subsequent studies led to the Luminal subtype being divided into two, Luminal A and Luminal B [136], and to additional molecular subtypes being found, including the claudin-low [137,138] and the molecular apocrine subtypes [139].

Molecular subtypes have later been translated into corresponding IHC subtypes (**Figure 2**), which is not a perfect match [138], but still provides a good estimation of prognosis [140,141]. When using IHC-based subtypes the biggest challenge is to separate Luminal A from Luminal B since they have divergent prognoses and treatments. Tumors expressing ER+PR-Her2- have a worse prognosis than ER+PR+Her2- tumors and are thereby considered to be a Luminal B subtype, no matter what level of Ki-67 is [142-144].

Figure 2. Subtypes with IHC according to St Gallen Guidelines 2015.



The Luminal A subtype is twice as common in older women as in younger ones [3,56,57,77,79,105,145]. Almost 50% of young women have a luminal breast cancer, and a

large proportion of them have high proliferation and high grade. Only a small proportion of tumors in the young will be of the Luminal A subtype when subtyping is based on IHC (**Table 1**). Luminal A is associated with the best survival of all subtypes in both young and older women [56,71]. In a study on prognosis in a large American population database, young age constituted an independent risk for breast cancer death in Luminal A disease (in this study, defined by ER+/PR+ and grade I-II) [3].

The proportion of luminal tumors of the Luminal B type is higher in young women than in older women [57,105]. Young women with tumors of the Luminal B subtype have a worse survival compared to older women [105,146,147]. In the gene-derived intrinsic molecular subtypes, the Luminal B subtype includes approximately 30% Her2+ tumors [112,119,148]. These Luminal Her2+ tumors are distinctively different from Luminal Her2- tumors since they can receive targeted therapy with trastuzumab and they should not be inappropriately classified as Luminal B [119].

The Her2+ subtypes are 1.5–2 times more frequent in young women than in older women [56,57,79,105,149]. The prognosis is similar for both young and older women [79,105,150].

TN breast cancer is twice as frequent in young women as in older ones [3,5,56,57,77,79,105]. There are no age-related differences in the prognosis within the TN subtype [151,152].

Tumors expressing ER-PR+Her2- have not been considered to belong to a separate reproducible subtype [95,153,154] although evidence for the opposite has also been published [155]. If they do indeed exist, ER-PR+Her2- tumors are uncommon and represent between 1% and 4% of all tumors [77,155] and are somewhat more common in young women [156].

***BRCA* associated breast cancer**

In a Swedish study on unselected women with breast cancer, the prevalence of *BRCA* mutations was only 0.4% [157]. Since *BRCA*-associated breast cancer penetrates at a low age, the prevalence in young women is much higher. In a Swedish population-based study, 9% of the women <41 years old at diagnosis had a *BRCA1/2* mutation [16]. In a prospectively collected American cohort where the indication for testing was breast cancer at age <40 years, the prevalence of *BRCA1/2* was 12.4% [158]. In an unselected breast cancer population, 12.2% of the women ≤45 years old tested positive for the *BRCA1/2* mutation [159]. In a large population of women subjected to genetic testing (n = 35,000), 14.4% of those <40 years old had a pathogenic variant of one of the 25 most common inherited breast cancer genes (in women aged <40, approximately 65% had *BRCA* mutations) [160]. In the subgroup of women with TN breast cancer, the corresponding prevalence was 24.8%. *BRCA1/2*-associated breast cancers are more often of the TN subtype and grade III [159]. All women with breast cancer <40 years of age should be recommended testing for *BRCA* mutations [161].

Treatment

Breast surgery

The proportion of young women having a mastectomy is higher (45-50%) than in older women (35%) [37,55]. Breast-conserving surgery (BCS) in women <40 years old is associated with a somewhat higher risk of local recurrence (LR) than mastectomy, but the type of surgery does not affect either distant disease-free survival or overall survival [80,162,163]. Multifocal lesions and extensive DCIS are more frequent in young women [55,80], which can affect re-excision rates, which are known to be higher in young women due to both tumor biology and smaller breast volumes [164]. It is of extra concern to have free margins after BCS in young women. Invasive cancer cells present on inked margins increased the LR rate 4-fold in women <40 years old, but not in women >40 years old [165]. Women operated on with BCS have a better quality of life than those who had a mastectomy and, with the long life expectancy of young women with breast cancer, BCS should be the first option whenever suitable [166]. In a cohort study of 965 women <40 years old, the 15-year outcomes concerning LR, distant metastases, breast cancer survival and overall survival were similar between those operated on with mastectomy and those operated on with BCS followed by whole breast radiotherapy [167].

Immediate breast reconstruction is safe in young women and should be offered to all women having the indication for mastectomy. Relative contraindications are locally advanced breast cancer involving skin or thoracic wall at diagnosis, grave psychiatric disease, smoking and a high BMI. Inflammatory breast cancer is an absolute contraindication [168]. Planned postmastectomy radiation therapy influences the cosmetic outcome after implant-based reconstruction, but most often, it still gives satisfactory results [169]. A systematic review has concluded that implant reconstruction should be advised prior to radiotherapy, while it is slightly better to perform autologous reconstruction after radiotherapy [170].

Axillary surgery

Approximately 50% of women <40 years old with breast cancer have lymph node-positive disease at diagnosis [5,55,64,66,80], compared to 70% at ages >40 [5,56,58,66], thus corresponding to a larger proportion of young women being operated on with an axillary clearance. The prevalence of lymphoedema at 5 years after surgery is high in young women (32%), and two of the risk factors for persistent swelling of the arm are the number of axillary nodes removed and obesity [171].

Axillary management is in the process of changing towards less extensive surgery, and this will benefit young women with breast cancer. For women with a maximum of 2 macro-metastatic lymph nodes, it is now considered safe to avoid axillary dissection [172]. However, it is worth noting that, for women <40 years old, the probability of axillary recurrence is twice as high as in older women [57,173].

Chemotherapy

Due to stage and subtype distribution, young women often have indications for chemotherapy. Since the year 2000, chemotherapy has been given to more than 90% of women <35 years old with breast cancer [55,80].

In the 1995 St Gallen Guidelines, age <35 was defined as high risk, and thereby, in and of itself, an indication for chemotherapy, no matter the stage or tumor biology [174]. This was further strengthened by Kroman et al. in 2000 in a randomized study on CMF versus no systemic treatment showing that women <35 years old have a 2.2-fold relative risk of dying compared to women aged 45–49 in the non-systemic treatment arm, whereas no difference in survival was seen within the chemotherapy arm [2]. In the 2005 St Gallen Guidelines, age <35 was lowered to an intermediate risk, resulting in chemotherapy being optional in young women with endocrine responsive tumors [175]. In the guidelines from 2009, age itself was no longer a reason for chemotherapy [176]. In clinical practice, there has been a major change in the use of chemotherapy during the last few decades, regarding both the proportion of patients treated and indications for treatment, as well as the choice of regimens. In a population-based Dutch study [177], 90% of the chemotherapy-treated women in the year 2000 received cyclophosphamide, methotrexate and 5-fluorouracil (CMF), while almost none were given CMF in 2005. In 2005, 96% of the treated women were assigned to anthracyclin-containing regimens, which gradually decreased to 68% in 2008 when, instead, taxane-containing regimens became more common, increasing from 24% to 34% between 2005 and 2008.

Neoadjuvant chemotherapy has developed from being an option for inoperable, locally advanced disease, to being the first option in tumors measuring 3 cm or larger, in case of node involvement, or in case of Her2+ disease. Neoadjuvant chemotherapy offers a biology-based treatment with the possibility of evaluating treatment response, increasing the chances of successful BCS and obtaining the surrogate prognostic information concerning a pathological complete response (pCR). In a population-based cohort of women diagnosed in 2000–2008, chemotherapy was given neoadjuvantly to 15.5% of the women <40 years old [80]. Nationwide population data from Sweden in 2014 showed that neoadjuvant chemotherapy was used in 19% of women of all ages and, in some regions, in up to 26% of women with primary breast cancer [178].

Women <40 years old have a higher rate of pCR than older women, especially for luminal-Her2-negative breast cancer [179]. Neoadjuvant studies have facilitated the introduction of more modern chemotherapy regimens such as docetaxel, adriamycin and cyclophosphamide (TAC). The highest pCR rates after TAC treatment have been observed in women <40 years old with TN or grade III tumors [180]. Neoadjuvant studies on women with TN breast cancer carrying *BRCA1/2* mutations have been shown to be promising, with high pCR rates when platinum salts have been added to standard chemotherapy [181].

Endocrine therapy

Today it is beyond all doubt that all women with ER+ breast cancer should be treated with endocrine therapy [94,182]. In 1992, the recommendation for premenopausal women with low risk (node-negative tumors <1 cm found incidentally) was observation or tamoxifen, for intermediate risk (node-negative, tumors 1–2 cm), tamoxifen and for high-risk ER+ tumors, chemotherapy +/- tamoxifen and, for high risk ER- tumors, chemotherapy only [183].

The options for endocrine treatment available today are tamoxifen, aromatase inhibitors (AIs) and a combination of either one of them with gonadotropin-releasing hormone (GnRH) agonists for ovarian function suppression (OFS). The standard endocrine treatment recommendation for premenopausal women with luminal tumors is tamoxifen for 10 years. According to the EBCTCG meta-analysis, 5 years of tamoxifen reduces the risk of recurrence by 50% throughout the first 10 years, independently of age, PR status, nodal stage and use of chemotherapy [94] and also reduces the 15-year mortality by a third. Extended adjuvant endocrine therapy with prolonged tamoxifen has been proved to be efficient in two very large trials [184].

For high-risk women (<35 years old or still premenopausal after chemotherapy or multiple axillary metastases), the recommendation is tamoxifen or AI for 10 years in combination with OFS for 2 years [48]. In the randomized SOFT and TEXT trials, premenopausal women given endocrine treatment including 3 years of GnRH, had a superior disease-free survival but no survival benefit [185,186].

Resistance to endocrine therapy may be more common in young women. They have a higher proportion of the Luminal B subtype that confers less benefit from endocrine therapy compared to those with Luminal A subtype [187]. In women with ER+ tumors, given both chemotherapy and endocrine therapy, women aged 35–50 had a survival benefit not seen in women <35 years old [188]. In a Swedish trial, premenopausal women with ER+ tumors benefitted from adjuvant tamoxifen only when PR was >75% [189]. Young women are less compliant with endocrine therapy than older ones [190-192].

Anti-Her2 treatment

Trastuzumab, a monoclonal antibody against Her2, was introduced in Europe in the year 2000 and in the adjuvant setting in 2005 [193]. In a Dutch study on women <35 years old, trastuzumab was introduced as a part of treatment in 2005, with successively increasing use towards 2008 [55]. Anti-Her2 treatment should be offered to all patients with Her2+ tumors, without taking age or menopausal status into account [150]. International guidelines recommend that all women with Her2+ breast cancer should receive 1 year of trastuzumab, except in very small (≤ 5 mm) node-negative tumors where trastuzumab can be omitted [48].

Radiotherapy

Young women with breast cancer have a high risk of local recurrence (LR) which is ascribed to their higher proportion of characteristics associated with an increased risk of LR (Table 1). In addition to the ordinary dose of 50 Gy to the breast, young women are recommended an extra boost of 16 Gy to the tumor bed after BCS [194]. Boost decreases the 10-year LR rate in young women by 50%, but has no effect on survival. [195]. Tumors of the Her2+ subtypes, which are more common in the young women, may be associated with resistance to radiotherapy and thus a higher risk of LR [196].

Risk prediction models

Different tools have been developed to tailor the treatment decision and select women in need of chemotherapy and/or endocrine therapy. The clinical risk can be measured as follows: *The Nottingham Prognostic Index (NPI)* [197,198](1982) uses tumor size, grade and lymph node status in an equation to indicate excellent, moderate and poor prognostic groups.

Adjuvant online! [199,200](2001) is an online tool using age, tumor size, number of positive axillary nodes, grade and ER status to provide an estimate of the 10-year outcome.

PREDICT [201-203](2010) is another online tool using age, mode of detection, tumor size, lymph node status, grade, ER, Her2, Ki-67 status and given treatment for prediction of prognosis.

Risk prediction models are generally well validated, but not for women <40 or >70 years old. Adjuvant online! has been shown to underestimate the risk of recurrence in up to 30% of women <40 years old [204]. PREDICT provides an accurate 10-year survival rate for women <40 years old, but the 5-year survival was overestimated for ER+ tumors and underestimated for ER- tumors [205].

The genetic risk can be measured by gene expression profiling (GEP) with the aim of improving decision-making regarding adjuvant chemotherapy in early breast cancer. Various commercial assays stemming from a common base of multiple genes expressing ER, Her2 and proliferation are available. Fresh-frozen tumor material or FFPE can be used with either deoxyribonucleic acid (DNA) microarrays or the reverse transcription-polymerase chain reaction (RT-PCR).

MammaPrint [206-208](2002) is a microarray-based assay of 70 genes allocating patients with early node-negative or node-positive breast cancer and endocrine treatment to a high-risk group (with additional benefit from chemotherapy) or a low-risk group (with no statistically significant additional benefit from chemotherapy).

Oncotype DX [110,209](2004) is an RT-PCR analysis based on 21 genes. It is used to predict the benefit of chemotherapy, as well as the likelihood of distant disease at 10 years

in women with ER+ early breast cancer. The Oncotype DX Recurrence Score is a score between 0 and 100 reflecting a successively higher risk of distant disease in both node-negative and node-positive disease. The Oncotype DX assay has mainly been validated in ER+, node-negative disease in patients with a median age of 50–60 years.

MapQuant DX [210](2006) uses 8 genes to produce a Genomic Grade Index that improves the histological grade classifications and divides histological grade II tumors into either grade I or grade III.

The PAM50 [211](2009) assay is a minimal gene set based on 55 genes for classifying intrinsic-like subtypes of breast cancer. It produces a continuous risk score and also determines the benefit of chemotherapy in addition to endocrine therapy in postmenopausal women with ER+Her2-negative breast cancer. The evidence is mostly based on node-positive patients, and only one study included premenopausal patients.

Local recurrence

Young age is an independent risk factor for LR, after both breast-conserving surgery and mastectomy [196,212–217]. The risk of having an LR due to young age is twice as high as that in middle-aged women [212,218]. The younger the patient, the higher the risk of LR. The risk for women aged <35 is higher than for women aged 35–39 [215]. The risk of LR in women <40 years old was 3.4% after 5 years and, in women >40 years old, 1.6% [196]. Established risk factors for LR are late stage diagnosis, high grade, subtype distribution, dense breast tissue [219], LVI, multifocality and the presence of extensive DCIS [218]. All of these characteristics are common in young women (**Table 1**). The subtypes associated with the highest risk of LR in young women are the Her2+ and TN subtypes [55,196,220].

Owing to a more biology-influenced approach in treatment decisions, the introduction of trastuzumab and taxanes, improvements in diagnostics and radiotherapy, the incidence of LR has decreased substantially over time and is now well under 1% per year also for the youngest women [55,221].

Distant recurrence and mortality

Young age is an independent risk factor for distant recurrence [57,216], but it seems to be restricted to early stages of the disease and to the luminal subtypes [3,79,147,152,188,222]. The majority of recurrences in young women are distant, not local. Among women <40 years old, 4.8% had an LR, versus 26.1% with a distant recurrence, at a median follow-up of 7 years [80]. In line with the observed decrease in LR with more modern systemic therapy, the incidence of distant recurrence has also decreased in young women. In 2003, women <35 years old had a 5-year distant recurrence rate of 17.8%. From 2004 to 2008, the corresponding rates were 19.2%, 14.6%, 8.2%, 8.1% and 10.0%, respectively [55].

There are no age-specific patterns of metastatic behaviour. Subtype-specific trends show a low frequency of metastases in women after Luminal A tumors. The metastases that occur are mostly bone metastases associated with a favourable prognosis. Her2+ and TN breast cancer have the highest risk of distant metastases, often visceral metastases occurring during the first three years [223,224].

Contralateral breast cancer

Young age at breast cancer diagnosis entails a risk for a later (metachronous) contralateral breast cancer (CBC) together with a *BRCA* mutation, positive family history, high breast density, lobular breast cancer, TN breast cancer, large tumor size and positive axillary lymph nodes [225-228]. The cumulative risk of CBC at 10 years is 4% for a 60-year-old woman and 6% for a 40-year-old woman, with a decreasing trend with modern systemic therapies [225,226]. Endocrine therapy decreases the risk of CBC by 50% [83]. Not only invasive breast cancer but also DCIS increases the risk of CBC. In a Swedish population-based study especially women aged <40 were at risk of a new contralateral event [229]. The majority of young women affected with primary unilateral breast cancer overestimate their risk of CBC. The risk of CBC is, in fact, similar (0.7% per year) [226] to the risk of a LR at the primary site (0.6% per year) [196]. Still, the risk of having distant metastases is much higher (2.8% per year) [55]. A study on the chromosomal relationship between the primary tumor and the CBC showed 1 in 10 CBC to be rather a distant spread instead of a new primary one [230]. Bilateral breast cancer at presentation (synchronous) is uncommon (fewer than 2%) and associated with older age [226,228]. Prophylactic mastectomy decreases the risk of CBC, but with no evidence of improved survival [231].

Fertility and pregnancy

Chemotherapy and endocrine therapy-induced amenorrhoea is common in young women [232]. The treatment's effects on fertility must be discussed with the young patient as soon as possible after the diagnosis. Early referral to a fertility clinic is strongly advised to discuss methods of fertility preservation. The available options for fertility preservation are ovarian stimulation with letrozole (AI), followed by egg retrieval for cryopreservation or *in vitro* fertilization for embryo cryopreservation. A third option is ovarian tissue harvesting and cryopreservation for later re-implantation [233].

Whether or not the use of GnRH agonists during chemotherapy preserve ovarian function has been investigated in several studies. According to two recent meta-analyses, GnRH appears to improve ovarian function and the ability to achieve pregnancy following chemotherapy [234,235].

Pregnancy-associated breast cancer (PABC) is defined as breast cancer detected during pregnancy or within one or two years since delivery. Every 4th breast cancer patient <35 years old and every 10th before age 40 is diagnosed during pregnancy. The incidence is increasing as women are postponing childbirth to later in life [236]. Women with PABC are more often diagnosed in advanced stages. Compared to other young women characterized by comparable age, stage and tumor biology, the prognosis does not differ [237,238].

Breast cancer treatment during pregnancy should not be inferior to that in the non-pregnant setting to spare the child [239]. The indications for breast surgery are the same as for non-pregnant women, but a sentinel node biopsy without blue dye is recommended. Endocrine therapy [240], trastuzumab [241] and radiotherapy [239] are contraindicated, whereas chemotherapy during the second and third trimester is well tolerated with no detrimental effect on the foetus. During the first trimester, chemotherapy is contraindicated due to a relatively high risk of congenital malformations. Women with breast cancer during pregnancy should be managed within a multidisciplinary team also including an obstetrician and a neonatologist. Delivery is recommended at full term after gestational week 37 [242].

Pregnancy after breast cancer does not impair the long-term prognosis, but rather has a protective effect on survival [243,244]. The best timing of pregnancy after ER+ breast cancer has not yet been established. There is an ongoing prospective study on women <42 years with ER+ breast cancer and a pregnancy desire (called POSITIVE) [245]. After 18–30 months of endocrine therapy, the treatment is interrupted for up to two years to enable a pregnancy.

Quality of Life

For everyone diagnosed with cancer, the diagnosis will have a huge impact on their daily life with physical, emotional, social and existential concerns. Young women with breast cancer have a worse Quality of Life (QoL) than middle-aged and older women, and the duration of reduced QoL is longer [246,247]. The QoL is even worse for young women affected by breast cancer than by other cancers [248] and a possible explanation could be that breast cancer treatment has a large impact on body image and sexual functioning and entails a premature menopause. Women with children and women with earlier psychiatric illness have a lower QoL [248]. To improve their QoL, young women with breast cancer should be offered interventions specifically designed to target their specific needs [166].

AIMS OF THE THESIS

The general aim of the thesis was to gain increased insight into the long-term prognosis for young women with breast cancer.

More specifically, the aims were to:

- study the long-term outcome by age for women diagnosed with breast cancer and to investigate the extent to which a worse prognosis for women aged <35 can be explained by stage, tumor characteristics, heredity, parity and treatment
- gain further insight into the biology behind the age-related differences in the prognosis for breast cancer
- find new prognostic markers that can help us to determine which of the young women that have an excess risk of recurrence
- assess the expression of proliferation markers in relation to age and subtype in order to clarify whether cyclins add prognostic information to the standard biomarkers in young women
- to compare Her2-status generated by testing *Her2* gene copy numbers (with silver *in situ* hybridization) and by Her2 protein expression (using immunohistochemistry) in a population-based cohort with a long-term follow-up and to find out whether either test method is superior for predicting the prognosis in young women who have a known overrepresentation of Her2-positive breast cancer.

PATIENTS AND METHODS

Studies I–IV are based on the same cohort identified from the regional Breast Cancer Quality Registries in Stockholm-Gotland and Uppsala-Örebro. We used the Swedish Personal Identification Numbers (PIN), assigned to all Swedish residents, for linkage between all registers used [249].

Data sources

The National Breast Cancer Quality Registry

The National Registry is based on joint information from the 6 different regional breast cancer quality registries in Sweden. It is updated continuously by matching with the Total Population Register, The Swedish Cancer Registry and The Swedish Causes of Death Registry. The National Registry contains prospectively collected data on patient, tumor and treatment characteristics and has a high validity. Since 2008, this registry has been organized on a web-based platform, INCA. In 2015, the coverage was 97% [178]. In the two regions from which data for our study cohort were taken, the Stockholm-Gotland and the Uppsala-Örebro regions, the Breast Cancer Quality Registries were started in 1976 and 1992, respectively. These two regions cover about 43% of the Swedish population [18].

The Swedish Cancer Registry

The Swedish Cancer Registry, located at the National Board of Health and Welfare, was established in 1958 and includes data on all diagnosed malignant (and some benign) primary tumors in Sweden. Reporting to this registry is mandatory by law, and since both the handling clinician and pathologist are each required to make the report, the coverage is very high, being >98% for breast cancer [250,251]. Individuals are identified by their PIN and tumors are coded with the International Classification of Disease (ICD) code. This registry includes data on the tumor site and histology, as well as dates, diagnostic methods and the name of the hospital providing the diagnosis.

The Swedish Causes of Death Registry

This nationwide registry, also located at the National Board of Health and Welfare, collects information on causes of death of Swedish residents who die in Sweden or abroad. This registry was initiated in 1751, digitalized in 1952, and its completeness is >99% [9]. This registry includes data on date of death, place of residence, underlying cause of death and contributing causes of death. Individuals are identified by their PIN and the cause of death coded with the ICD code.

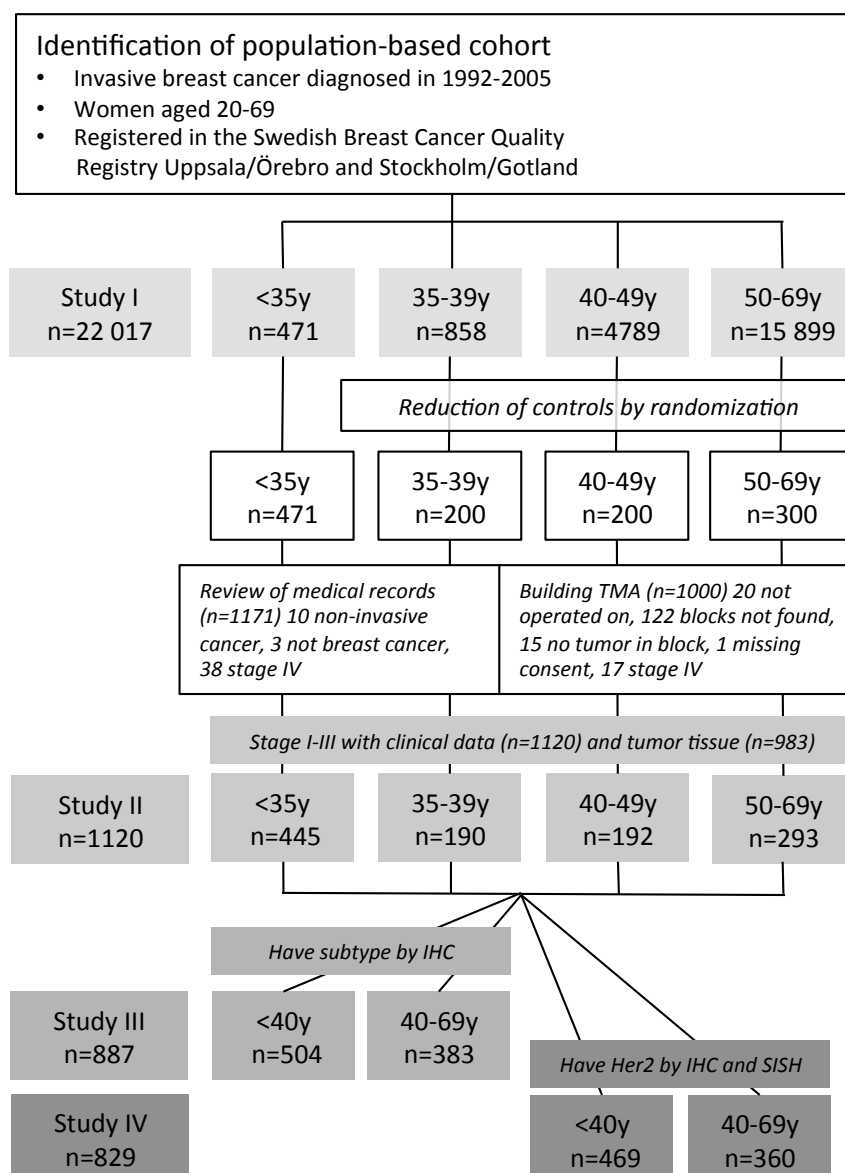
The Total Population Registry

This registry held by Statistics Sweden contains civil registration information on all private individuals in Sweden including PIN, sex, births, marriage and partnership, address, country of birth and assessed personal income tax [252]. Information on migration in and out of Sweden is available in the registry.

Study population

For the purpose of this thesis, all women aged 20–69 diagnosed during 1992–2005 with a primary invasive breast cancer (unilateral or synchronous bilateral) in the Stockholm-Gotland and Uppsala-Örebro regions were identified from the regional Breast Cancer Quality Registers. These women were included in the study cohort from which all studies (I–IV) in this thesis were derived (**Figure 3**).

Figure 3. Flow-chart of Studies I–IV.



Exclusion criteria were earlier breast cancer (n=617) and less than a one-month follow-up (n=52). In case of synchronous bilateral disease (n=260, 1.2%) the one in the most advanced stage was chosen as the index tumor. After exclusions, the cohort (**Study I**) consisted of 22,017 women, with 11,527 women from the Stockholm-Gotland region and 10,490 from the Uppsala-Örebro region. Women in the cohort were divided into four age groups: 20–34 (n = 471), 35–39 (n = 858), 40–49 (n = 4789) and 50–69 years (n = 15,899).

In **Study II**, registry data were supplemented with information from medical records and analyses of tumor tissue. All women <35 years old at diagnosis (n=471) from Study I were compared to randomly sampled groups of women aged 35–39 (n=200), 40–49 (n=200) and 50–69 (n=300) from the same cohort (**Figure 3**). The size of the sample was decided after a power calculation based on effect sizes from Study I, with the aim to over-sample young women aged 35 or older, but still with a reasonable possibility of collecting detailed clinical data and tumor tissue for cases and the comparison group. To reach a power of 80% at a 95% significance level, we needed 326 individuals to detect a difference in breast cancer-specific survival and 262 individuals to detect a difference in locoregional recurrence-free survival. After exclusions (3 wrongly registered as having breast cancer, 10 with DCIS, but wrongly registered as having invasive breast cancer), the new smaller cohort, still with its population-based origin, consisted of 1171 women (**Table 2**).

Table 2. Comparison of cohort in Study I and II.

	Study I	Study II		Study I	Study II
Age distribution	n (%)	n (%)	Region/County	n (%)	n (%)
20-34 years	471 (2,1)	471 (40)	Sthlm+Gotland	11,527 (52)	662 (57)
35-39 years	858 (3,9)	200 (17)	Uppsala/Örebro	10,490 (48)	509 (43)
40-49 years	4789 (21,8)	200 (17)	Uppsala	1545 (7)	80 (7)
50-69 years	15,899 (72,2)	300 (26)	Södermanland	1525 (7)	67 (6)
total	22,017 (100)	1171 (100)	Värmland	1648 (7,5)	75 (6)
Median age	years	years	Örebro	1425 (6,5)	78 (7)
20-34 years	31	31	Västmanland	1420 (6)	61 (5)
35-69 years	55	49	Dalarna	1457 (7)	86 (7)
			Gävleborg	1470 (7)	62 (5)
35-39 years	37	37			
40-49 years	45	45			
50-69 years	59	59			

Women with DCIS are also included in the Breast Cancer Quality Register but were not selected for this cohort. In our sample of the cohort, we found the accuracy of registration to be 99.7% (1168/1171). As survival was the main outcome, we restricted further analyses to stage I–III disease, leaving out 38 women with stage IV disease at diagnosis. The final study base for Study II consisted of 1120 women. Stage IV was defined as the presence of a distant metastasis at diagnosis or within three months of the diagnosis. TNM staging was done according to UICC criteria [253].

In **Study III**, we related the expression of proliferation markers to subtype and age. All women from Study II with information on subtype were included in Study III (n=887).

In **Study IV**, we investigated whether or not added information on Her2 by SISH could explain survival differences between young and older women. All women from Study II included in TMA (n=983) except those without information on Her2 obtained either by using Silver *in Situ* Hybridization (SISH) or IHC (n=154) were included, leaving 829 women in the cohort.

Methods

Clinical data (Studies I-IV)

For **Study I**, the two regional Breast Cancer Quality Registers in Stockholm-Gotland and Uppsala-Örebro regions were combined into one large dataset. The registers contained slightly different variables, but most variables were joined and merged into one dataset (**Table 3**). Missing data were presented and there was no use of imputation. Data in the registers on multifocality, grade, ER and PR were incomplete to such an extent that they were deemed unreliable.

In **Study II** detailed clinical information was collected from medical records after ethical approval and local permission from supervisors at all involved clinics. New data were collected blinded from the individual data retrieved from Study I, as presented in **Table 3**.

Table 3. Variables collected for Studies I-IV.

Study I	<p>Registry Age, county of residency, date of diagnosis, menopause status, mode of detection, contralateral breast cancer, multifocality, tumor side, tumor size, number of lymph nodes examined, number of positive lymph nodes, TNM-stage, grade, ER, PR, treatment (intention to treat data); type of breast and axillary surgery, radiotherapy, chemotherapy, endocrine therapy</p>
Study II	<p>Medical records Age, length, weight, parity, pregnancy association, heredity, mode of detection, tumor size, lymph node status, grade, ER, PR, proliferation, Her2, EIC, multifocality, LVI, histological type. Given treatment; type of breast and axillary surgery, surgical margins, re-excisions, prophylactic surgery. Type and length of chemotherapy, endocrine therapy and radiotherapy. Treatment of LR. Date and location of contralateral breast cancer, LR, distant recurrence. Date and cause of death, last day of follow-up.</p> <p>Pathology review Grade, LVI, lymphocyte infiltration, cancer in situ component, tumor invasion front</p> <p>TMA ER, PR, Ki-67, Her2 (IHC, for 2+ confirmation of Her2 gene by SISH), EGFR, CK 5/6, 14, 17</p>
Study III	<p>TMA ER, PR, Ki-67, Her2, Cyclin A2, cyclin B1, cyclin D1, cyclin E1</p>
Study IV	<p>TMA ER, PR, Ki-67, Her2, Her2 SISH, CK 5/6</p>

EIC and multifocality were extracted from the pathology reports. EIC was defined as >25% of the tumor consisting of DCIS with an intraductal component also beyond the edge of the invasive tumor. Multifocality was defined as two or more invasive tumor foci separated by at least 1 cm. For the 8 women lost to follow-up, the cause and date of death was retrieved from the Swedish Causes of Death Register. After data collection was completed, all of the included study subjects were anonymized, leaving only their given specific study code. The code key was kept separately. The cohort was recorded as a research registry according to the Swedish Data Protection Authority [254]. Clinical data retrieved for Study II was also used for **Studies III and IV**.

Tumor tissue (Studies II-IV)

To retrieve tumor tissue, permissions from the 11 pathology departments involved were obtained according to the Law on Biobank for Research Purposes [255]. The collected tumor tissue was gathered in a sample collection at the Karolinska University Hospital Biobank.

When available, original haematoxylin and eosin stained sections were retrieved; otherwise, a re-sectioning and re-staining was performed. The pathologist reviewed sections for grade according to Elston and Ellis [78], LVI, lymphocyte infiltration, cancer in situ component and tumor invasion front.

The pathologist marked tumor-representative areas on the section and tissue microarrays (TMAs) were generated from 1.0-mm cores in duplicate from each patient's archival FFPE tumor block. From the TMA blocks, 4 µm sections were cut and automated IHC was done using a Lab Vision Autostainer 480 (Thermo Fisher Scientific).

The IHC stained and mounted TMA sections, as well as whole tumor sections, were scanned at 20x magnification using a ScanScope XT System (Aperio Technologies, Vista, USA). The high-resolution, digital images of each tissue core were annotated with respect to the outcome of IHC staining. TMA production, IHC staining, section scanning and annotation were performed at the Human Protein Atlas facilities at Rudbeck Laboratory at Uppsala University and in accordance with their standards [256,257].

ER, PR, cyclins and cytokeratins (CK) were annotated at the following levels: 0-1%, 2-10%, 11-25%, 26-50%, 51-75% and >75%. Ki-67 were annotated at 0-1%, 2-10%, 11-14%, 15-20%, 21-30%, 31-40%, 41-50%, 51-75% and >75%. Her2 was annotated at 0, 1+, 2+, and 3+.

Her2 SISH was performed on an automated Ventana BenchMark ULTRA IHC/ISH Staining Module (Ventana Medical Systems, Inc., Tuscon, AZ, USA) and was encountered in <4 dots, 4-6 dots and >6 dots (including clusters). Cut-offs for defining positive expression and the antibodies and probes used are presented in **Table 4**.

Table 4. *Cut-offs for antibodies and probes used for protein and gene expression*

	Definition of pos staining			Ref	Antibody/probe/dilution
	Study II	Study III	Study IV		
ER	>10%	>1%	>1%	[88, 89]	M7047, 1:150, Dako, Glostrup, Denmark
PR	>10%	>25%	>25%	[102, 258]	M3569, 1:1000, Dako, Glostrup, Denmark
Ki-67	>20%	>14%	>14%	[48, 119]	M7240, 1:200, Dako, Glostrup, Denmark
Her2 IHC	3+, 2+ if SISH+	3+, 2+ if SISH+	3+, 2+ if SISH+	[107, 259]	A0485, 1:1000, Dako, Glostrup, Denmark
Her2 SISH	>6 dots	>6 dots	>6 dots	[107, 259]	INFORM HER2 Dual ISH DNA Probe Cocktail
Cyclin A2		>10%			CAB000114, 1:200, Novocastra, Germany
Cyclin B1		>10%			CAB000115, 1:1000, Transduction Lab, USA
Cyclin D1		>10%			CAB000024, 1:20, Novocastra, Germany
Cyclin E1		>10%			CAB000308, 1:200 Pharmingen, USA
CK5/6			>10%	[260]	M7237, 1:1000, Dako, Glostrup, Denmark

Out of the 1158 women included in the cohort for Study II, 20 were not operated on, 122 tumor blocks were not found, 15 blocks had no tumor left in them, and there was one missed consent to use tumor material. Thus, 1000 women were included in the TMA. For the analyses, only women with stages I–III were included (excluding 38 women with stage IV disease), leaving 983 women with tumor material available for analysis out of the 1120 potentially includable women (88%).

Definition of subtypes

For **Studies II–IV**, we used surrogate definitions based on central IHC re-evaluation of ER, PR, Ki-67 and Her2 according to the St Gallen Consensus Statement [48,261].

Luminal A	ER+, PR+, Her2- and Ki-67 low
Luminal B	ER+, PR+, Her2- and Ki-67 high or ER+, PR-, Her2- and any Ki-67
Luminal-Her2+	ER+ and Her2+, any PR or Ki-67
Her2+	ER-, PR- and Her2+, any Ki-67
Triple negative	ER-, PR- and Her2-, any Ki-67

Statistical analysis

Study I: The end-point was the 5-year relative survival ratio (RSR) [262]. The observation time was defined as the time between the breast cancer diagnosis (date taken from the Regional Breast Cancer Quality Registries) and death (date taken from the Total Population Registry). In the absence of events, patients were censored at the end of follow-up (31 December, 2006). The RSR was calculated by comparing observed survival with expected

survival of the general population, represented by all women matched for age, calendar period and county of residency.

To use relative survival in a large cohort like this has an advantage, cause of death is not required, and still can it provide a measure of mortality irrespective of cause of death. Data for calculating county-specific life tables were taken from Statistics Sweden 2008 [18].

To investigate the possible age-related differences in prognostic factors (tumor size, lymph node status and hormonal status) we used Fisher's exact test to test the independence between age and dichotomized variables. Excess mortality was modelled using the Poisson regression [263] to calculate differences in survival by age and important confounders such as stage, year of diagnosis, tumor size, lymph node involvement, grade, hormonal receptor status, multifocality, breast surgery and intended adjuvant systemic and locoregional treatment. Women aged 50-69 were used as a reference group. Cumulative RSR by stage was performed to study age differences across this variable. A multivariate analysis was performed, adjusted by year of diagnosis, stage at diagnosis and oncological treatment and stratified on tumor characteristics to evaluate the independent effect of age on survival.

Furthermore, we studied differences in survival between the age groups in stages I-IIb while adjusting for the potential determinants by modelling the excess mortality (RER) using a Poisson regression analysis. In order to assess the effect of the different variables separately, as well as in addition to each other, five separate models were constructed. SAS 9.1 software was used for all statistical analyses.

Study II: Endpoints were breast cancer-specific survival (BCSS), distant disease-free survival (DDFS) and locoregional recurrence-free survival (LRFS). All survival estimates were calculated from the date of diagnosis to the date of event or, in absence of an event, to the end of follow-up, recorded individually, but, at latest, the end of 2012. An event for BCSS was defined as death from breast cancer, for DDFS as a distant recurrence or death from breast cancer and, for LRFS, as a locoregional recurrence as the first event prior to distant recurrence. No censoring was done for invasive or non-invasive contralateral breast cancer.

Associations between variables were evaluated using the Pearson Chi-2 test. Survival curves were derived from Kaplan-Meier estimates [264] since death from other cause than breast cancer was uncommon in this population. Survival curves were compared using the log-rank test [265]. Cox proportional-hazard models were used to estimate univariate and multivariate hazard ratios (HRs) with 95% confidence intervals (CIs). IBM SPSS Statistics v22.0 (SPSS Inc., Chicago Illinois, USA) was used for all statistical analyses.

Study III: The endpoint was DDFS, as defined in Study II. All statistical methods used were the same as in Study II. IBM SPSS Statistics v24.0 (SPSS Inc. Chicago, Illinois, USA) was used for all statistical analyses.

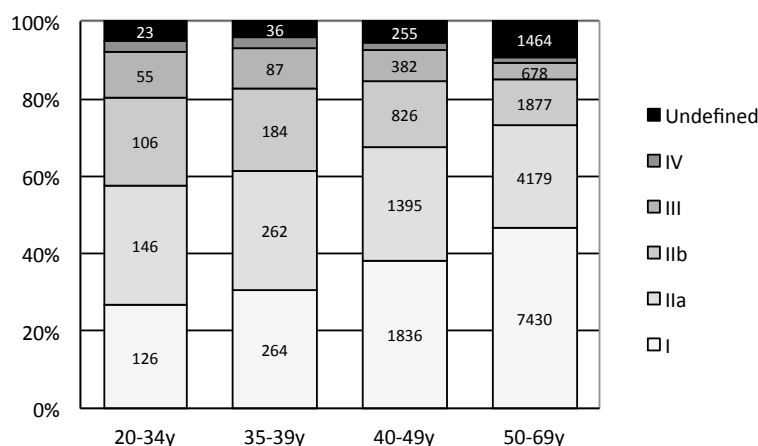
Study IV: The primary endpoint was the probability of Her2-positivity by IHC and SISH. The secondary endpoint was BCSS (as defined in Study II), predicted by either method. For probabilities of test accuracy, the likelihood ratio test was used and, for the calculation of post-test probabilities, Fagan's nomogram [266]. Distributions and associations between variables were evaluated with the Pearson Chi-2 test. Survival analyses were derived using Kaplan-Meier estimates and compared using the log-rank test. Cox proportional-hazards models were used to estimate hazard ratios. Likelihood ratios, posterior probabilities and 95% CIs were calculated using a Diagnostic Test Calculator [267]. All other calculations were performed using IBM SPSS Statistics v24.0 (SPSS Inc. Chicago, Illinois, USA).

RESULTS

Study I - Women with breast cancer diagnosed before age 35 have a more advanced disease and receive a more intense treatment, but, still, they have a worse prognosis compared to women aged 50–69

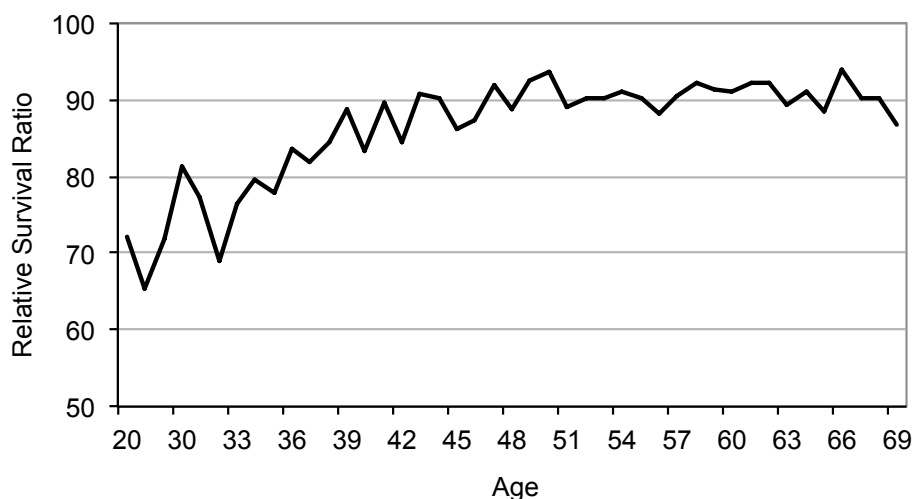
In this large population-based cohort of women aged 20–69, only 2.1% of the women was aged <35 at breast cancer diagnosis and only 6.0% aged <40. Compared to women aged 50–69, women aged <35 had larger tumors and more often with lymph node involvement and stage III–IV at diagnosis (**Figure 4**).

Figure 4. Stage distribution in 22,017 women diagnosed with primary invasive breast cancer.



Variables describing tumor biology had a high proportion of missing data, although indicating more aggressive characteristics, more often grade III, hormone receptor negativity and multifocality. Treatment (as by intention to treat) was more intense in women aged <35, with a higher rate of mastectomies and planned chemotherapy more than twice as often, whereas no age-related differences in planned endocrine treatment or radiotherapy were noted. As for survival estimates, the 5-year survival, measured by the relative survival ratio (RSR), was much lower in women aged <35 (74.8%) than in those aged 50–69 (90.7%) (**Figure 5**).

Figure 5. Relative survival ratio (RSR) by age at diagnosis.



When translated into risk as expressed by the relative excess ratio (RER) using women aged 50–69 as reference, women aged <35 had 2.8 times as high a risk of dying within 5 years from a breast cancer diagnosis. When stratified by stage at diagnosis, the excess risk of dying for women aged <35, compared to those aged 50–69, was highest in the early stages and most pronounced in those with the smallest tumors, i.e., measuring only 1–10 mm. For women in stage III, there were no age-related differences in survival.

When analysing tumor size, lymph node status and hormonal receptor status, one by one, and adjusting for the other two factors, age <35 was an independent risk for death due to ER+PR+ tumors, regardless of tumor size or lymph node status, but not for ER-PR- tumors. A subgroup analysis of women with stage I, with tumors <10 mm, showed that women aged <35 were scheduled for a very intense treatment with more mastectomies, chemotherapy and endocrine therapy more often than for women aged 50–69. Women aged <35 with 11–20 mm tumors were scheduled more often for chemotherapy. There were no differences in planned radiotherapy for women of different ages with stage I tumors sized 1–20 mm. The combined effect of prognostic factors for women with stage I-IIb tumors was modelled in a Poisson regression where the unadjusted excess risk of death for women aged <35 was 3.6 times as high risk of women aged 50–69. After adding explanatory variables separately (year of diagnosis, stage, grade, hormonal receptor status, multifocality, type of surgery, radiotherapy, chemotherapy and endocrine treatment), age <35 was an independent risk factor for death, conferring an increase that was 1.8 times as high as for women aged 50–69.

Study II – *In early stages of breast cancer, age <40 is an independent risk factor for distant and locoregional recurrence. Age <40 entails a higher risk of breast cancer death of the Luminal B subtype, but not in the other subtypes.*

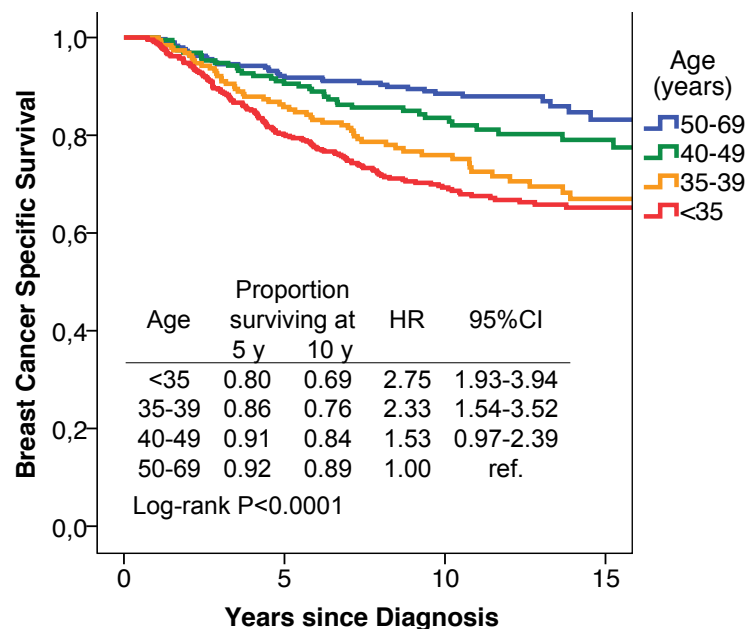
At a median follow-up of 10 years, 20.2% of the women aged <35 had had a locoregional recurrence. Corresponding figures for women aged 35–39, 40–49 and 50–69 were 19.5%, 14.1% and 7.5%, and a distant recurrence had occurred in 40.0%, 31.1%, 24.5% and 14.3%, respectively.

Women aged <35 had larger tumors, more often positive lymph nodes, more often tumor grade III, ER-, PR-, Her2+, high Ki-67, presence of LVI, multifocality and EIC. Compared to women aged 50–69, the subtype distribution in women aged <35 showed Luminal A less often and TN and Her2+ subtypes more often. Reflecting differences in stage distribution and tumor biology, breast cancer treatment was more intense in women aged <35 and they had more often mastectomies and more often chemotherapy, which more often included the new drugs of the time, such as taxanes and neoadjuvant chemotherapy. Trastuzumab was introduced during the study period and was given to very few women. Chest wall

radiotherapy after mastectomy was given almost twice as often to women aged <35, whereas endocrine therapy was given as often as to women aged 50-69.

Breast cancer specific survival, taking only age into consideration, showed that women aged <35 had an almost 3-fold risk and women aged 35-39 a more than 2-fold risk of dying from breast cancer, compared to women aged 50-69 (**Figure 6**).

Figure 6. Breast cancer-specific survival by age for 1120 women stage I-III.



No. At Risk		Years since Diagnosis			
<35	445	353	210	84	
35-39	190	162	97	39	
40-49	192	170	111	54	
50-69	293	267	172	50	

Among the risk factors for breast cancer-specific deaths among women aged <35, as compared to those aged 50-69, tumor size <20 mm, stage I, grade I-II and Luminal B subtype were identified. For women aged 35-39, the risk pattern was quite similar to that of women aged <35, whereas women aged 40-49 had risks similar to those of women aged 50-69. In the multivariate analysis, adjusting for year, stage, screening detection, grade, subtype and systemic treatment, age <35 and age 35-39 were independent risk factors for locoregional recurrence, but not for breast cancer specific survival (BCSS) or distant disease-free survival (DDFS).

In a subgroup analysis of women in stage I-IIa, split at age 40, age <40 was an independent risk factor after all adjustments for distant (HR, 1.87; 95% CI, 1.03-3.44; $p=0.042$) and locoregional recurrent disease (HR, 4.10; 95% CI, 2.20-7.66; $p < 0.001$) (**Figure 7**).

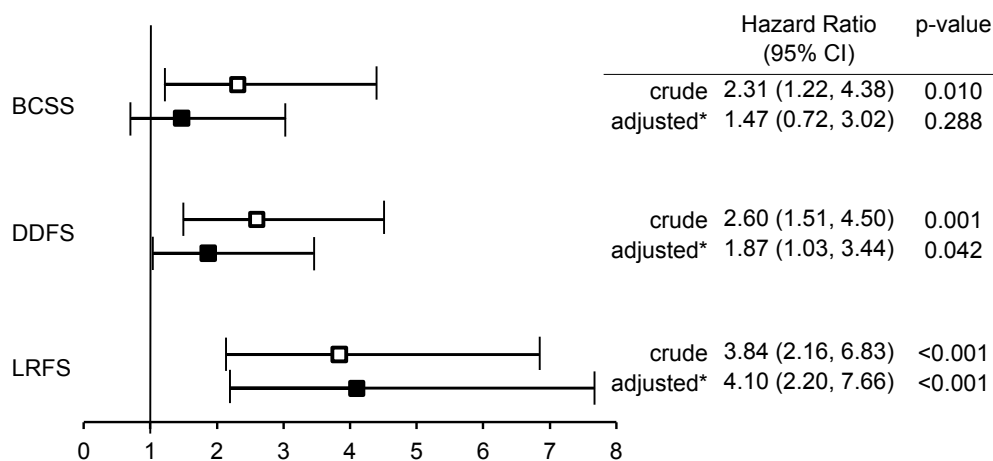


Figure 7. Forest plot of multivariate Cox model describing risk of event for women with luminal breast cancer stage I-IIa. Women aged <40 (n=152) compared to women aged ≥40 (ref) (n=237).

Study III –The higher expression of proliferation markers in young women does not have a strong impact on prognosis. Proliferation markers are less important in young women, and Ki-67 is prognostic only in young women with luminal tumors with PR+. Age <40 years is an independent factor for distant disease only in the Luminal B PR+ subgroup. The only cyclin adding prognostic value beyond subtype in young women is cyclin E1. A high cyclin E1 is associated with a better prognosis in young women with Luminal B PR– breast cancer.

Young women with luminal tumors had a significantly higher expression of all cyclins and Ki-67 than middle-aged women, while in Her2-positive tumors there were no age-related differences in the expression of proliferation markers. In TN tumors, cyclin A2 and E1 were significantly higher expressed in women aged <40.

On studying the association between DDFS and the different proliferation markers, and not taking subtype or age into account, the survival analysis in the whole cohort showed a high expression of Ki-67, cyclin A2 and cyclin E1 to be significantly associated with a worse outcome (Ki-67; $p<0.001$; cyclin A2; $p=0.014$; cyclin E1; $p=0.030$). In young women no proliferation marker was prognostic, not in general, nor in analyses restricted to only luminal tumors. For middle-aged women, a high cyclin D1 expression was associated with a better outcome ($p=0.002$).

A univariate Cox regression analysis of risk factors for distant disease by subtype and age showed age <40 to be associated with a worse DDFS only in luminal tumors (age <40 years; HR 2.37 (1.66–3.37)).

When we stratified luminal tumors by PR status, we found Ki-67 to be prognostic only in luminal PR+ tumors. When analysed with different cut-offs (14%, 20% and 30%), the lower cut-off was shown to have the strongest prognostic value in young women, while the higher cut-off was best in middle-aged women.

In a multivariate analysis, high cyclin E1 remained an independent prognostic factor for a better outcome in young women with Luminal B PR- tumors (HR 0.47 (0.24–0.92); $p=0.027$), while high cyclin D1 remained an independent prognostic factor for a better outcome in women aged ≥ 40 with Luminal B PR+ tumors (HR 0.19 (0.05–0.74); $p=0.017$). Age < 40 years was an independent risk factor for DDFS exclusively in women with Luminal B PR+ tumors (HR 2.35 (1.22–4.50); $p=0.010$) (**Figure 8**).

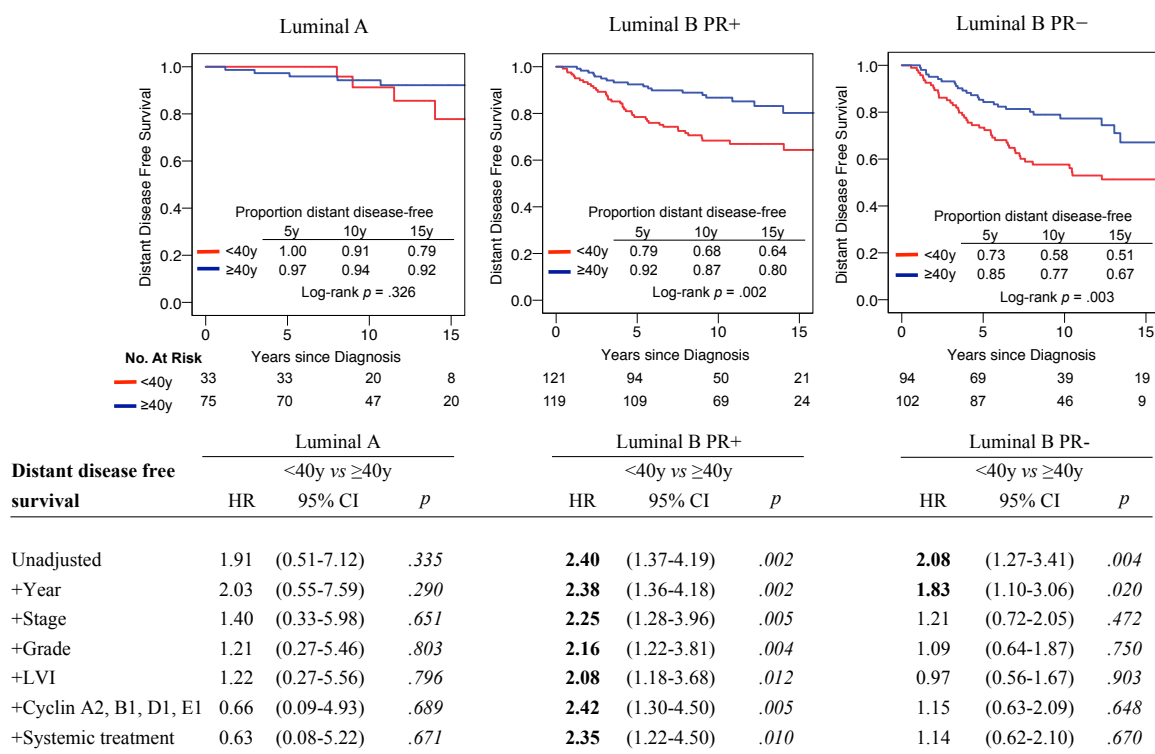


Figure 8. Prognosis by age in women with breast cancer of the Luminal A, Luminal B PR+ and Luminal B PR- subtypes.

To put the prognostic importance of cyclin E1 for young women with breast cancer into a clinical context, we performed a survival analysis of DDFS by age and subtype, dividing the luminal tumors into Luminal A, Luminal B PR+, Luminal B PR-/cyclin E1 high and Luminal B PR-/cyclin E1 low (**Figure 9**). Young women with Luminal B PR-/cyclin E1 low tumors had a markedly worse prognosis, with an over 6-fold increased risk of distant disease (HR 6.21 (2.17-17.6)); $p=0.001$) compared to Luminal A tumors.

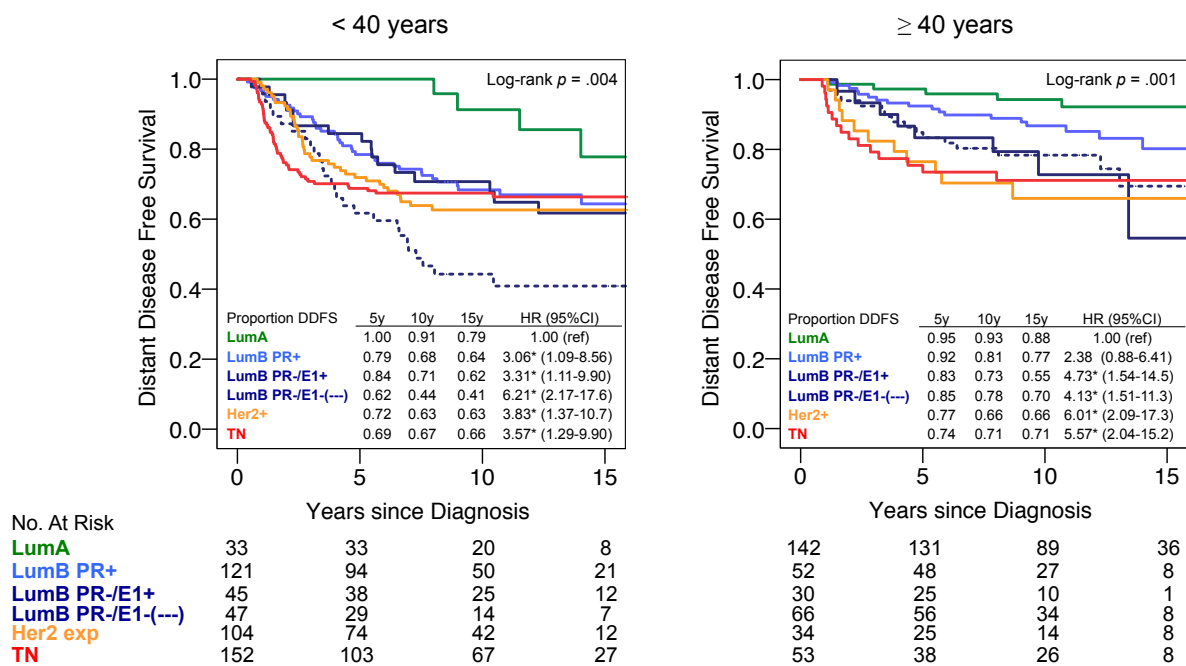


Figure 9. Kaplan Meyer curves for DDFS by age and subtype. Women with missing data on cyclin E are excluded (n=8).

Study IV – Her2-assessment with silver enhanced in situ hybridization (SISH) for all, significantly increases the Her2-positive rate compared to routine Her2-testing, and similarly for women aged <40 and ≥40. Her2 amplification is present in more than a third of cases scored 1+ with IHC. All Her2 amplified cases, both true positive and false negative, had a significantly worse BCSS than the true negative cases.

Both young and middle-aged women had a significantly higher proportion of Her2-positive tumors when tested by SISH instead of routine testing with IHC plus reflex SISH for equivocal cases (IHC 2+); i.e. from 20.0% to 24.4% (p<0.001). The increase was similar for women aged <40 (25.6% to 30.3%) and ≥40 years (12.8% to 16.1%).

On comparing the two tests, routine testing, with SISH testing, the sensitivity was 81.0% and the specificity 99.4%. Likelihood ratios indicated that a positive routine test considerably upgraded a prior clinical chance of Her2 being positive (to 98%), while a negative test changed the probability of Her2 being positive more modestly (to 6%). Due to a higher prevalence of Her2+ in women aged <40, the risk of a negative Her2 IHC (0-1+) missing a Her2 amplification was 1 in every 14 women and corresponding risk for women aged ≥40 was 1 in every 25 women (**Figure 10**).

Her2 SISH

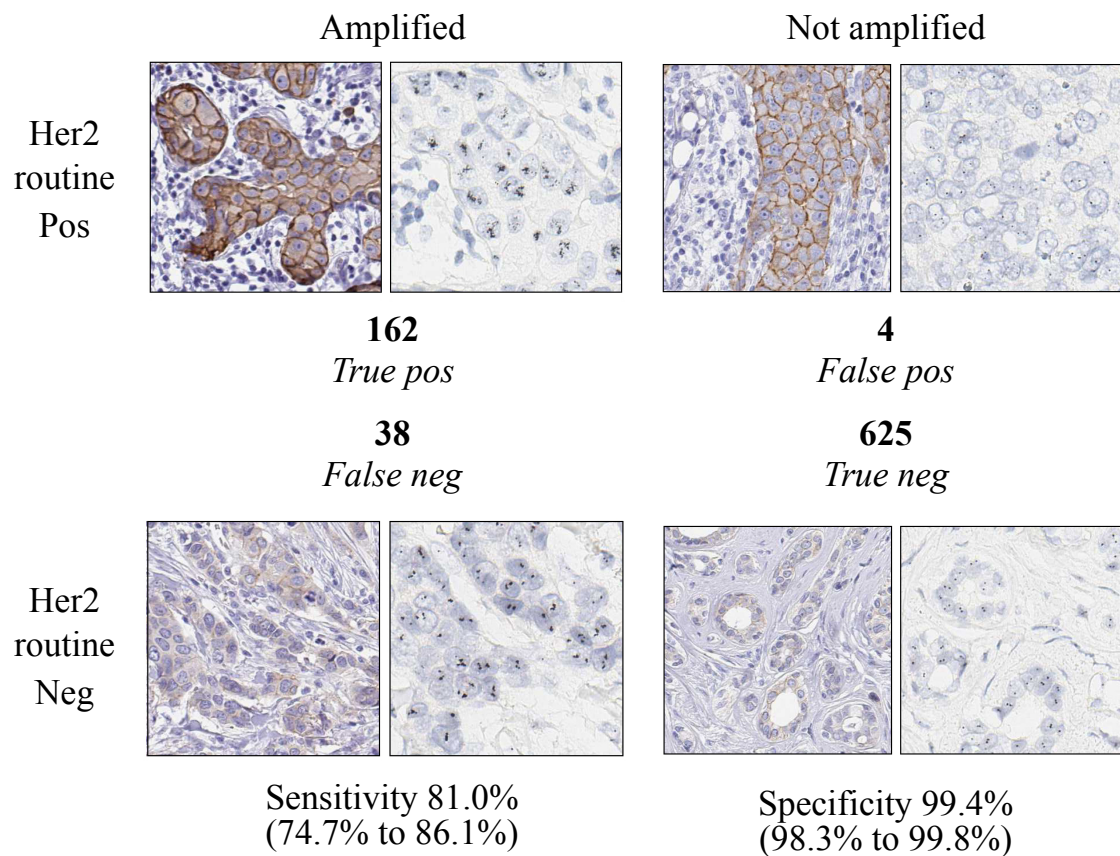
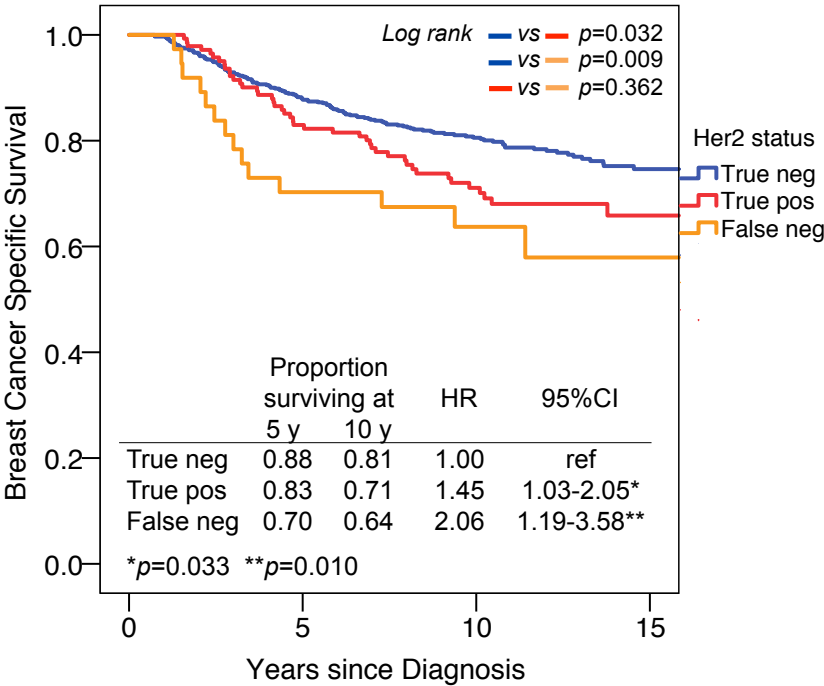


Figure 10. Likelihood ratios for Her2 routine testing and SISH, respectively, and corresponding histological examples of paired Her2 IHC and SISH stainings.

Her2 amplification was present in 4.6% of cases scored 0 with IHC, while corresponding proportions for scores 1+, 2+ and 3+ were 36.0%, 83.7% and 96.8%. Her2 had a prognostic value regardless of it was assessed by IHC (3+ *vs* 0-1+, HR 1.51, $p=0.028$), *Her2* gene copy numbers (>6 dots *vs* <4 dots, HR 1.60; $p=0.005$) or *Her2* gene amplification (amplification *vs* no amplification, HR 1.55; $p=0.008$). When the Cox regression analysis were stratified by age, Her2 status was not a risk factor for BCSS in women aged <40, but for women aged ≥ 40 with Her2 status expressed by SISH copy numbers or amplification (HR 2.69 (1.46-4.97); $p=0.001$ and HR 2.88 (1.54-5.40); $p=0.001$).

Compared to true positive cases, false negative cases more often had ER-positive, CK5/6-positive, lymph node-negative disease, which was less often multifocal. On comparing BCSS, did the true negative cases have the best survival, followed by the true positive cases (HR 1.45 (1.03-2.05); $p=0.033$), whereas the false negative cases had the worst survival (HR 2.06 (1.19-3.58); $p=0.010$) (**Figure 11**).

Figure 11. Breast cancer-specific survival by Her2 status in 804 women untreated with trastuzumab.



DISCUSSION

Young age as a risk factor for poorer survival in breast cancer was suggested as early as in the 1930s [268], with increasing attention to the phenomenon in the 1980s [1,269]. With the development of national registration of diseases, the search for evidence in medicine has been facilitated, making it easier to draw conclusions, especially concerning rare diseases, among which we reckon breast cancer in young women. With highly validated data in many registers, the possibility of identifying differences within a population and then adjusting for them one by one, using epidemiological strategies, there is a prospect of coming closer to the truth. The prognosis in breast cancer is age-dependent since different factors influence survival in different age groups.

The best survival from breast cancer is seen in women aged 40-49 years. These women are included in screening programmes and thereby have their breast cancers detected early. The impact of co-morbidity is low. A large population-based study on elderly women with breast cancer, generated from the same regional breast cancers as in our cohort, showed that women aged >70 (which not are included in screening programs) had a worse survival compared to women aged 50-69 subjected to less diagnostic activity, a later stage diagnosis and less intense treatment [270]. This research arose from the hypothesis that low age could not possibly be a true risk factor, but only a proxy. The aims of this thesis therefore became to identify risk factors for young women with breast cancer by comparing different variables across age groups and thereby to find an explanation for why the young women do worse became the aim of this thesis.

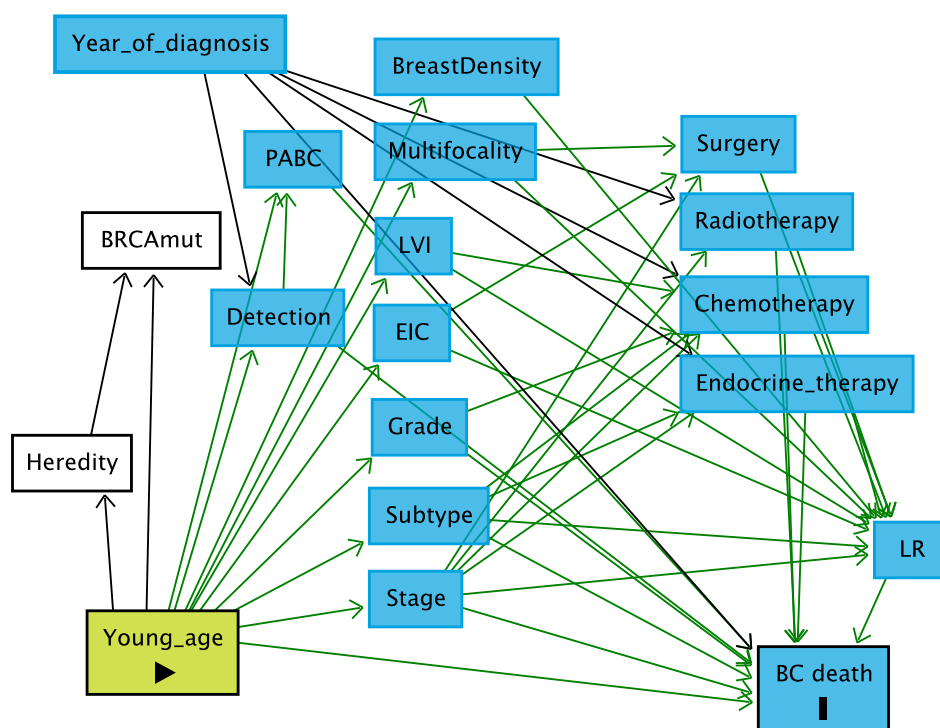
Methodological considerations

Internal validity is crucial to being able to draw conclusions from data. A high internal validity is dependent on the absence of systematic errors such as bias and confounding. Bias is an exposure that influences the risk of the outcome. **Selection bias**, could for example be introduced if certain age groups are registered in the National Breast Cancer Quality Registry less often. The Registry is, however, continuously validated by updates from the Swedish Cancer Registry, as well as the Swedish Causes of Death Registry and is therefore influenced to a low degree by bias. In our study, we included age groups in which the validity is good (not including women aged >75), for whom validity is known to be less good. **Diagnostic bias** might possibly have influenced the results in Study I since women aged <40 were not included in screening programmes. In Study I, the multivariate analysis was adjusted for stage, and in Study II for both stage and detection mode (in Study II data on the detection mode were extracted from the medical records).

Confounders are variables associated with outcome independently from the exposure and should be distributed differentially among the exposed and the un-exposed. In Studies I-IV

we have searched for possible explanatory variables and tried to adjust for them by both stratification and regression analyses. The DAGitty is a graphical tool for drawing causal diagrams [271] (**Figure 12**). The third common way to control for confounding, matching of cases, is not used in these studies.

Figure 12. Causal diagram (DAGitty) illustrating the relation between variables of exposure (young age) and outcome (breast cancer death).



Loss to follow-up in Study I was minimal due to the mandatory reporting to the Swedish Causes of Death Registry, with which The National Breast Cancer Quality Registry data were matched. In Studies II-IV there were no missing data on cause of death but for 8 of 1171 women lost to follow-up in medical records, there might have been unnotified local recurrences.

Missing data on variables in Study I were evenly distributed between the age groups, except for tumor size, which was missing more often in women aged <35. Young women do more often have locally advanced disease and thereby a less well-defined tumor size. Stage was missing more often in women aged 50-69. In our cohort, women with undefined stage had a survival resembling that of women in stage I-IIa. In Study II, information collected from the medical records ensured a more complete data set. We found that, despite a 60% missing of stage in Study I, the proportion of grades I, II and III, respectively, was nearly the same as in Study II, indicating that the missing data did not introduce a bias. There was a very high concordance between intention-to-treat data in Study I and the actual treatment given in Study II. The single difference noted was that more intense treatment; especially chemotherapy, had been given to women aged <40 (**Table 5**).

Table 5 Proportions of planned treatment in Study I compared to that given in Study II.

Age		BCS	Radio-therapy when BCS	Radio-therapy	Endocrine therapy when ER+	Proportion neoadjuvant	Chemo-therapy
<35	Study I	44.8%	91.9%	71.1%	69.0%	14.0%	65.2%
	Study II	46.3%	95.1%	80.4%	70.4%	17.1%	75.5%
35-39	Study I	48.1%	93.7%	74.2%	65.2%	13.5%	60.8%
	Study II	49.5%	97.9%	78.4%	62.0%	15.3%	74.7%
40-49	Study I	55.5%	93.5%	75.3%	64.8%	8.5%	46.2%
	Study II	60.9%	96.6%	83.3%	62.2%	6.8%	46.4%
50-69	Study I	63.8%	92.4%	75.5%	72.8%	4.3%	26.5%
	Study II	66.2%	96.4%	78.8%	75.0%	2.7%	30.4%

External validity, i.e., the ability to generalize the findings of these studies to another population, we consider high due to the population-based design maintained throughout Studies I-IV.

Study I

We found that age <35 when diagnosed with breast cancer was an independent risk for death in early stages of the disease. The age-related differences in survival were most pronounced in women with small tumors without lymph node involvement. This could have multiple explanations. Women aged 50-69 (and to some extent also women aged 40-49) had a high proportion of early, screening detected tumors. Screening detection *per se* has been shown to be a good independent prognostic factor.

A small tumor size could also mean different things in young *vs* old women. In the group of small tumors we hypothesized that the different age groups had differing proportions of multifocal tumors and tumors with extensive DCIS, but only a small invasive foci. This was addressed in Study II where multifocality and EIC could be eradicated as risk factors. Instead, we found an absence of multifocality and EIC to be a risk, and perhaps the presence of these factors influenced treatment decisions towards more extensive locoregional and systemic treatment.

Furthermore, no differences in survival were seen between tumors in advanced stages or in those with hormone receptor-negative tumors. Based on these findings we hypothesized that women with more advanced stage and hormone receptor-negative disease, regardless of age, received intense treatment, thereby reducing the differences between age groups. This hypothesis was strengthened by the study by Kroman et al. suggesting that age-related differences in survival were only present in women not receiving chemotherapy [2].

Tumor biology appeared to be a possible explanation for the findings in Study I, but the tumor biology-related variables available in the registry were few in number and there was a

large amount of missing data on important variables. The missing data on tumor characteristics was evenly distributed across age groups.

Data on the type of surgery was recorded as given treatment with less than 0.5% missing. Systemic treatment was reported as intention-to-treat, and the proportion of missing data was not recorded. Endocrine treatment was planned in only 65-70% of the women with ER+ tumors, irrespective of age, which is considered to be under-treatment by today's standards. Endocrine therapy was not recommended for women with tumors <1 cm or for premenopausal women until the end of the study period.

In the light of the contemporary St Gallen Guidelines, age <35 was an indication for chemotherapy, but was only planned for 34% of the women aged <35 in stage I within our study. The proportion of women scheduled for chemotherapy was, however, much higher for women aged <35 and 35-39 than for middle-aged women, indicating that tumor biological characteristics or low age in itself was indications for the more intense systemic therapy planned in this early stage.

To conclude, we found that stage at diagnosis could partly explain the worse survival in young women, but that the remaining independent prognostic impact of age was most likely only a proxy for aggressive tumor biology.

Study II

Study II was designed for further in-depth studies of age-related differences in prognosis based on the results from Study I. We aimed to study the same research question but now including several variables on tumor characteristics not available in the registers, e.g., data on parity, pregnancies and heredity, as well as data on treatment with a complete long-term follow-up. The design also enabled a validation of all variables from the registry previously studied, but with a large proportion of missing data. By collecting detailed clinical data and enabling new analyses of archival tumor tissue, we hoped to dismiss low age as a risk for breast cancer death and instead get insight into the biological explanation behind the association between age and outcome.

The finding that women aged <35 and women aged 35-39 share the distribution of tumor characteristics, risk profiles and survival outcomes is interesting from a biological point of view. One factor that can influence the prognosis in young women, but not in middle-aged ones, is whether the tumor arises during, or within, a year of pregnancy (PABC). On reanalysing data from Study II, PABC was found to be an increased risk for BCSS in women aged <35 (60 PABC of 440 women aged <35; 13.6%) (HR 1.70 (1.12-2.59); $p=0.013$) but not in women aged 35-39 (12 of 182; 6.6%) or women aged 40-49 (2 of 189; 1.1%). Including PABC in the multivariate model did not change the main findings. Another factor

that only influences women aged <40 is that they are not included in screening mammography, which we adjusted for in the multivariate model.

The finding of similarities between women aged <35 and 35-39, and the fact that women aged 40-49 had only one risk factor that differed between them and those aged 50-69 (PR-negativity was a risk for women aged 40-49), reassured us that combining the two youngest and the two oldest age groups would not introduce any substantial bias. This strategy was later also used for Studies III and IV.

One finding in Study II was the increased risk of locoregional recurrence (LR) in young women. Women aged <40, stage I-III, had twice as high a risk of LR as women aged ≥40, which is in line with earlier publications [212,218]. We know that women with advanced stage, Her2+ and TN breast cancer are at higher risk of LR, but also when the analysis is restricted to women with luminal Her2-negative early disease, the risk for women aged <40 having a LR as first event was 4-fold higher compared to those aged ≥40.

We have chosen not to use disease-free survival, but instead locoregional recurrence-free and distant recurrence-free survival in our studies, knowing the comparably higher risk of LR in young women than in middle-aged women, so as not to mix the two different events. Absolute figures of locoregional and distant recurrences are shown in **Figure 13**.

On analysing all women, regardless of stage or subtype, women aged <40 had LR as the first separate event twice as often as women aged ≥40 (20% vs 10%). The corresponding figures for distant disease or breast cancer death, as the first event was 24% vs 14%. Women aged <40 had distant disease or breast cancer death twice as often as women aged ≥40 (36% vs 18%). The proportion of women remaining disease-free after a LR was 40% vs 55%. Possibly, the LR was a chance to receive a second-try adjuvant round of treatments, which substantially decreased the risk of a later distant recurrence.

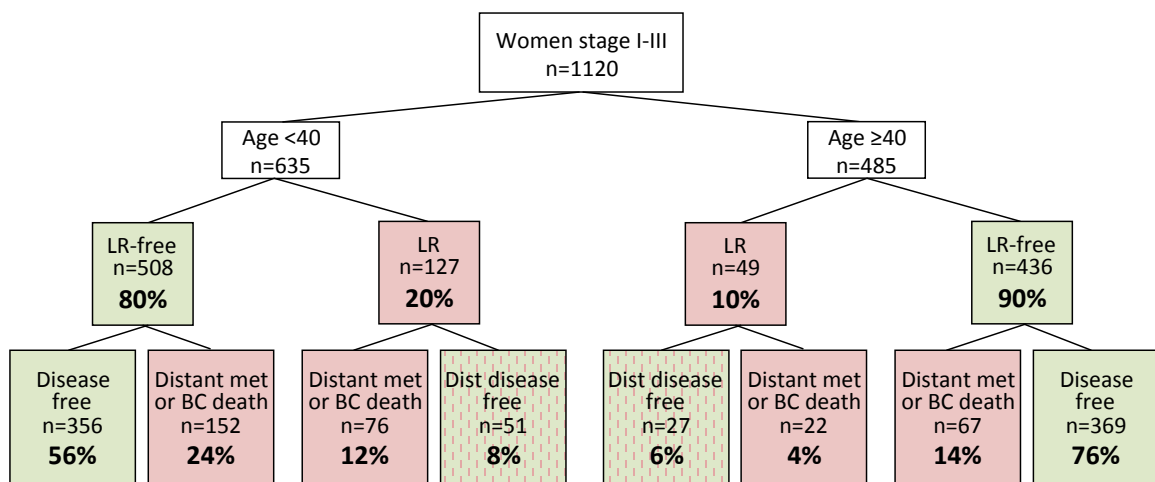


Figure 13. LRFS and DDFS in women stage I-III.

In Study II, we still found young age to be an independent risk factor for distant and locoregional recurrence in early stages of disease, but now restricted to tumors with luminal (Her2-negative) biology.

Study III

In the design of the cohort for Studies II-IV, one of the aims was to find new prognostic markers for the young population. With the findings from Study II regarding age-related differences in prognosis being restricted to luminal tumors, we decided that the first group of prognostic markers to be addressed were proliferation markers since they constitute the main water-shed in the division of the Luminal A *vs* Luminal B subtypes.

Cyclins were discovered in the mid-1990s and showed promising results as prognostic markers in breast cancer and with an age-specific expression. Since subtypes made their entrance in the prognostic arena, the value of cyclins has been investigated only by a few authors [122-124] and never in a population-based material.

We extended our earlier analyses of IHC markers (ER, PR, Ki-67, Her2, CK5/6) from Study II with analyses of cyclins A2, B1, D1 and E1. To mimic the clinical situation and reveal the prognostic impact of proliferation markers within different subtypes, we stratified our analyses by subtype (Luminal Her2-negative, Her2+ and TN).

The main findings were: Proliferation markers are significantly more highly expressed in women aged <40, but they do not have a strong impact on prognosis. Ki-67 was prognostic only in young women with Luminal PR+ tumors. The optimal cut-off for Ki-67 as a prognostic marker in luminal PR+ tumors was lower for younger women than for middle-aged ones. Age <40 was an independent risk factor for a worse DDFS in women with Luminal B PR+ tumors. Cyclins added only limited prognostic value, except in young women with Luminal B PR- breast cancer, a subgroup with a sinister prognosis, where a high expression of cyclin E1 was associated with a statistically significant better prognosis.

On considering the results from our Study III, the absence of standardized methods for measuring Ki-67 and the question of reproducibility of the results are crucial. One of the strengths of this study is the central re-evaluation of Ki-67 which was performed in this population-based material with tumor tissue from such a large proportion of the women included. While it has been shown that protein expression of ER, PR and Her2 on archival TMA cores highly correlates with the analysis of whole sections [272], the analysis of Ki-67 on tissue cores has been shown to generate a generally lower Ki-67 score than analyses of whole sections [273]. Also, the way Ki-67 is assessed matters. Focke et al. showed that the higher the number of cells counted in luminal tumors, the lower were Ki-67 scores and thus

the higher were the proportion of Luminal A tumors [274]. We analysed Ki-67 on duplicate cores from each patient, read in hotspots. Since the main goal of this study is a comparison between age groups, a potential bias derived from a low Ki-67 count on TMA cores, should not in any major way affect our results. On the contrary, Ki-67 in our cohort was comparably high, corresponding to the age profile in the cohort. A rule of thumb is that in a 'normal breast cancer population' 1 out of 3 tumors should be considered to be highly proliferating. On applying this rule to our cohort in Study III and defining women aged 50-69 as normal, a Ki-67 cut-off of 30% will produce a proportion of 69% slowly proliferating tumors. This strengthens the assumption that the optimal cut-off of Ki-67 for prognostic use is 30% for women aged ≥ 40 years.

Age remains an independent negative prognostic factor in Luminal B PR+ breast cancer, with a more than two-fold risk of distant disease compared to middle-aged women with corresponding stage and biology. This is a clinically highly relevant finding which has to be considered in treatment decisions. One explanation for this finding may be endocrine resistance, which is noted more often in young women in studies on gene expression signatures related to endocrine resistance [222]. Young women are less adherent to endocrine therapy which might be another explanation [191,192].

With these results, we draw the following conclusions concerning women aged < 40 with luminal tumors; (1) PR-negativity is an important marker of a worse survival; (2) the optimal cut-off for defining a Luminal A tumor in PR+ tumors is sooner 14% than 20% or 30% and (3) the Luminal A subtype is very uncommon in young women, and the separation from the Luminal B subtype is even more difficult than in middle-aged ones, and perhaps gene-based subtyping should be used for these women. The question is raised as to whether a classic Luminal A subtype accompanied by a good prognosis actually exists in women aged < 40 since the 15-year distant disease-free survival in the young women with Luminal A tumors (79%) is about the same as that seen in middle-aged women with the Luminal B subtype (80%). 4) Further studies are needed to clarify the explanation behind the divergent prognosis in young and middle-aged women with Luminal B PR+ tumors despite more intense treatment in young women. With current biomarkers and tumor characteristics used in clinical routine, we found no significant differences between the age groups.

Study IV

The main findings were: 1) A significantly higher proportion of Her2-positivity was generated by SISH-analysis in all women, compared to routine testing with IHC followed by SISH only for those equivocal (IHC 2+). Her2 routine testing led to a missed Her2-positivity in every 14th woman aged < 40 and every 25th in those aged ≥ 40 . We deem the clinical utility of this finding to be high since in real-life breast cancer care, every case of early Her2-positive

breast cancer nowadays has a good chance of cure due to targeted therapies developed against the Her2 receptor. 2) All Her2 amplified cases, both true positive and false negative, had a significantly worse BCSS than the true negative cases.

A Her2 IHC score of 3+ had a very high correlation to Her2 amplification by SISH (96.8%), a statement also true for those who scored IHC 2+ (83.7%). The unexpected finding was that, among the cases scoring IHC 1+, 36.0% were, in fact, Her2-amplified. In the pathological routine assessment of Her2 status, the judgment as to whether a case scores 1+ or 2+ by IHC can be very difficult, and often involves a second opinion by another pathologist.

With the results from Study IV it seems obvious to suggest a changed routine to perform Her2 SISH for both cases with Her2 IHC score 1+ and 2+. It can also be added that the proportion of cases scoring 1+ using Her2 IHC is small, especially after the new assessment guidelines by ASCO/CAP from 2013 [275,276], and would accordingly not be very expensive. *In situ* hybridization is however, in comparison to IHC, more expensive, has higher failure rates, takes a longer time both to test and interpret [277]. We also observed a high failure rate of SISH (SISH-analysis ending uninformative). Of 939 cases eligible for the study (all having information on Her2 IHC), 110 (12%) failed the SISH test and were excluded. The failure rate in our material is in line with Dybdal et al. having a 15% failure rate [278]. Of the 110 cases uninformative with SISH, 100 had IHC score 0, seven had score 1+, one had score 2+ and two score 3+. Assuming these cases were amplified to the same extent as those included in the analyses, the Her2 positive rates would have been 17.7% with routine test and 22.4% with SISH; thus the difference between the methods would have been the same as when we restricted analyses to only informative cases (20.0% vs 24.1%).

The false negative rate in our study was relatively low (38 of 829; 4.6%); however, for these 38 women, hypothetically, a positive Her2 test could have changed their prognosis to the better thanks to the targeted anti-Her2 treatments offered to women with Her2 positive tumors today.

The false negative cases were more often ER+, which is in concordance with findings by Lee et al. indicating tumors with high intratumoral heterogeneity and inaccurate Her2 assessment are more frequent in the Luminal-Her2+ subtype [279]. Multifocality can also increase the risk of intratumoral heterogeneity and is more often present in Luminal-Her2+ tumors [280,281]. We tried to overcome intratumoral heterogeneity by viewing duplicate cores from each case and performing both IHC and SISH at the same laboratory and on consecutive sections of the TMA tumor block. According to the current evidence analyzing Her2 status only on the largest tumor foci is safe as long as the smaller concomitant foci do not differ in histological type or tumor grade [282].

In our study were the false negative cases more often CK5/6 positive. Cytokeratins indicate a basal phenotype, and CK5/6-positive, Her2+ tumors are associated with worse prognosis and a high proportion of non-responders to targeted therapy [260,283,284].

When comparing the prognosis between the true negative, the true positive and the false negative cases, the true positive cases had, as expected, a worse BCSS than the true negative cases (HR 1.45 (1.03-2.05)). The false negative cases did also have a worse prognosis than the true negative ones (HR 2.06 (1.19-3.58)), however, not statistically significantly different from the true positive cases ($p=0.362$).

As expected, we found Her2 status not to be a prognostic factor in young women. Young women have an over-representation of the aggressive subtypes Luminal B and TN, which have about the same outcome as seen in Her2+ subtypes. On the contrary, Her2-status was clearly prognostic in women aged ≥ 40 with a subtype distribution dominated by Luminal A and Luminal B, both associated with a better survival.

CONCLUSIONS

- Women with breast cancer diagnosed before age 35 have a more advanced disease at diagnosis. They receive a more intense treatment, but still have a worse prognosis than women aged 50-69.
- In luminal (ER-positive, Her2-negative) breast cancer there is a significantly different distribution of both tumor characteristics and prognosis between young and middle-aged women.
- Tumor characteristics as well as prognosis are very similar for young and middle aged women with the Her2 positive and triple-negative subtypes.
- In early luminal breast cancer, age <40 is an independent risk factor for distant and locoregional recurrence. The risk for young women compared to middle-aged women to have a distant recurrence is 2-fold, and to have a locoregional recurrence 4-fold. Age <40 confers a higher risk of breast cancer mortality in women with tumors of the Luminal B subtype, but not in other subtypes.
- Proliferation markers are important only in luminal tumors, where they are significantly higher expressed in women aged <40. They do not have a strong impact on prognosis. Ki-67 has a prognostic value in luminal tumors, restricted to the luminal PR+ group. Age <40 is an independent risk factor for distant disease only in women with tumors of the Luminal B subtype being PR+.
- The prognostic value of cyclins are restricted to luminal tumors. For women aged <40 with luminal PR- tumors (18% of the young population), a high cyclin E1 was an independent marker for decreased risk of distant recurrence.
- Her2 status examined by silver in situ hybridization (SISH) generates a higher proportion of Her2 positive cases than routine testing with immunohistochemistry. In trastuzumab-untreated women Her2 was a strong prognostic marker for women aged ≥ 40 , but had no value as a prognosticator in women aged <40.

FUTURE PERSPECTIVES

The observations made, and conclusions drawn in this thesis are based on historical data, which is a prerequisite to obtain a long follow-up. During the period from 1992 and until 2005, diagnostics and treatment of breast cancer has undergone dramatic changes. Breast cancer screening became fully implemented and treatment regimes changed according to evidence-based studies. The survival rates increased for all women, but most for middle-aged women, which concomitantly increased the differences in outcome between young and middle-aged women.

In the 1940s young age was in itself identified as a risk factor for lower survival in breast cancer. Later were age-related differences in survival were restricted to early stages of the disease, and more recently the age-related differences have been limited to women with tumors of the luminal (ER+/Her2-) subtypes. Gene expression profiling has identified age-related differences in genes regulating tumor growth, immune response, mammary stem cells and apoptosis. With an increased insight into the biology of breast cancer in young women, we will most certainly discover that age is just a proxy for a combination of other factors. Until then some crucial questions need to be answered:

1. Why are young women more prone to Luminal B, Her2-positive and triple-negative subtypes? Is the answer in the genes?
2. Why are the age-related differences in survival restricted to women with Luminal B tumors expressing PR?
3. Is the explanation for age-related differences in prognosis found in either of; stroma-related factors, stem-cell properties, angiogenetic factors, immune response markers, or hormonal receptors?
4. Can we find new biomarkers selecting young women at low risk of recurrent disease and thereby reduce the use of systemic therapy?
5. Do age-related differences in survival persist in an era of modern therapies?
6. Can young women with non-genetic risk factors for breast cancer (like breast density) be identified and benefit from screening?

We have constructed our young breast cancer cohort with the aim to elucidate some of these unanswered questions, whereas other questions need new material, new cohorts and new collaborations to be answered.

SVENSK SAMMANFATTNING

Målet med denna avhandling var att få en ökad kunskap om långtidsprognosen hos unga kvinnor med bröstcancer.

I en populationsbaserad kohort bestående av 22 017 kvinnor med bröstcancer, studerade vi prognosen i olika åldersgrupper. Kvinnor under 35 år vid diagnos (471 st), kvinnor 35-39 år (858 st) och kvinnor 40-49 år (4789 st) jämfördes med kvinnor i åldern 50-69 år (15 899 st) med avseende på överlevnad uttryckt som relativ överrisk att dö jämfört med normalbefolkningen i samma åldersgrupp. Kvinnorna under 35 år hade den sämsta överlevnaden vilket delvis kunde förklaras av en högre andel unga med diagnos i ett senare skede av sjukdomen. När man kontrollerade statistiskt för skillnaden i stadium fann man att en sämre överlevnad för de unga endast kan ses vid diagnos i tidigt stadium.

I nästa studie gick vi vidare och studerade alla kvinnorna under 35 år vid diagnos, men jämförde dem nu med en mindre, slumpmässigt utvald grupp om 700 kvinnor från den stora kohorten. För dessa kvinnor insamlades journaluppgifter om deras bröstcancer, men även uppgifter om barnafödande, ärftlighet, behandling och uppföljning. Arkiverat tumörmaterial insamlades till en tumörbank, och på detta gjordes nya tumörbiologiska analyser. Vi studerade risken för bröstcancerspecifik död, risken för lokalt återfall (i bröstet eller på bröstkorgsväggen) samt risken för återfall av bröstcancer i andra organ. När man i analyserna korrigerade för bl a skillnader i stadium, tumörbiologi och behandling fann vi att låg ålder i sig fortfarande var förenat med en högre risk att få lokalt återfall än hos kvinnor i åldern 50-69. Unga kvinnor med tidigt stadium av bröstcancer av östrogenkänslig typ och utan överuttryck av Her2-genen hade även en ökad risk för återfall i andra organ. Dessa kvinnor hade en nästan dubbelt så stor risk att få återfall i andra organ än en kvinna som var 50-69 år.

Fyndet att unga kvinnor med östrogen-positiva, Her2-negativa tumörer var de som hade en sämre prognos fick oss att gå vidare med analyser av tumörernas tillväxttakt, proliferation, en markör som generellt är viktig för att skilja tumörer med en bra respektive sämre prognos. På tumörmaterialet gjordes analyser av Ki-67 och cykliner, proteiner som indikerar hög tillväxt. Resultaten från föregående studie stod sig, men vi kunde nu ytterligare specificera gruppen med åldersskillnader i prognos till tumörer av Luminal B subtyp med känslighet för ett annat könshormon, progesteron. Dessa kvinnor under 40 år hade en drygt dubblerad risk för återfall i andra organ. Detta fynd hjälper oss att förstå vilka unga kvinnor som kan behöva mer eller annan behandling än vad som ges till en medelålders kvinna med samma tumörtyp.

I avhandlingens sista studie studerades Her2-positiva tumörer. Dessa har en sämre prognos än många andra subtyper av bröstcancer, men å andra sidan finns sedan ca 10 år en

målinriktad behandling för dessa tumörer vilket lett till att prognosen förbättrats drastiskt. Her2-positiva tumörer är dubbelt så vanligt hos unga som hos äldre kvinnor. Vi jämförde två testmetoder som används för att diagnosticera Her2-positiv bröstcancer och fann att metoden som påvisar Her2-positivitet på gennivå gav en högre andel av Her2-positiva fall än rutinmetoden där Her2 undersöks på proteinnivå. Detta är ett viktigt fynd eftersom alla kvinnor som går med oupptäckt Her2-positiv bröstcancer skulle kunna få en avsevärt förbättrad behandling med större chans till bot.

ACKNOWLEDGEMENTS

This work would not have been possible without the support and encouragement of colleagues, friends and family. I would like to express my special thanks to:

My supervisor, **Irma Fredriksson**, for your enormous engagement, always putting me and this thesis at the top of your priorities. For providing me with the best of conditions for research; money, time and important clinical questions! Besides that, you are my PubMed, a fantastic role model and a very dear friend! What can I say, we did this together!

My co-supervisor, **Jan Frisell**, for your inspiring enthusiasm as a surgeon, supervisor and professor! You have always supported me from the very beginning in 2004 by creating a fantastic working environment and teaching me how to fly instead of crashing!

My co-supervisor, **Lars Holmberg**, for your immense wisdom, teaching me how to put research results into a greater perspective and helping me back on track when lost in translation in the perplexity of statistical methods!

My mentor, **Eva Hellstöm Lindberg**, for being the first of my woman-doctor-'wannabes', and for being my mentor in this thesis.

The BCY, Breast Cancer in Young women research group; **Sonja Eaker Fält**, **Henrik Lindman**, **Linda Lindström** and **Kristina Magnusson** for our invaluable collaboration through the years!

Fredrik Pontén, for your support and true interest and being there for all my questions!
Hans Garmo, for teaching me the value of meticulous precision in every step of statistical testing! Thanks to you, I love this art!

Jonas Bergh, for always being enthusiastic about our results and the first to answer my e-mails. For providing a great breast cancer network and the latest news from the scientific arena!

The team at the Human Protein Atlas Lab, **Ing-Marie Olsson et al.** at Rudbeck Laboratory, Akademiska in Uppsala for showing such patience teaching a surgeon TMA building.

Jan Zedenius, for welcoming me into the Breast, Endocrine and Plastic Surgery Team at Huddinge in 2004, transferring the spirit into BEK and supervising me the last years of my residency at KS.

Jörgen Nordenström, for helping me back to research after some years of academic starvation; thanks to you, I made it to the Research School for Clinicians in Epidemiology!

Kerstin Sandelin, for always promoting me! I appreciate our collaboration with students, medical records, ÄBC, trail-running and that you show me the world outside KS!

Eva Reihner, for your true interest and care for me since 2004, for sharing birds, photos, science and friendship with me!

Per Mattsson, head at the Breast and Endocrine Surgery Department (BEK), for culturing the BEK spirit and giving me the opportunity to complete this research project!

The Breast Nurses; **Cecilia Arevald, Elisabeth Göransson, Agneta Eriksson, Marianne Unevik, Karolina Fridblom, Cecilia Evestedt** and **Lotta Winge**, for your support, love and being the best team-players of all!

Ann-Britt Wikström, for all guidance and help, it has been fantastic to have you as an ally in the KI world!

Chatrin Lindahl, for help with small and big things and friendship during all these years!
Carola Nilsson and **Liselotte Stenalm**, for making the third floor a great working environment, always eagerly to offer help!

Wiveca Åberg, Susanne Agartz and **Lisa Viberg**, for great support in the hunt for medical records and tumor tissue in the Stockholm Jungle!

Aina Johnsson Sahlström and **Polymnia Nikolaidis** for providing me with the daily research chit-chat!

All colleagues, present, former and prospective: **Lars-Ove Farnebo, Robert Bränström, Martin Bäckdahl, Leif Perbeck, Ivan Shabo, Fredrik Karlsson, Henrik Andersson, Fuat Celebioglu, Linda Hildoff, Anna Ljung Constantinidou, Linda Zetterlund, Hedvig Löfdahl, Caroline Holsti, Jenny Granström, Jan Åhlen, John Blomberg, Inga-Lena Nilsson, Magnus Kjellman, Mehmet Gözen, Hannah Adam** and **Richard Smith** for the support of each of every one of you!

All former colleagues at Gastrocentrum Kirurgi: **Louis Riddez, Torbjörn Holm, Ulrik Lindfors, Lovisa Strømmer, Magnus Falkén, Leonard Clay, Olle Bernell, Johannes Blom, Gabriella Jansson Palmer, Annika Sjövall, Anna Martling, Mirna Abraham Nordling, Per Nilsson, Kristina Stenstedt, David Edler, Petri Rantanen, Henrik Iversen** and all the rest I forgot, for friendship and joy at the Helicopter!

The female doctor-leader-ship squad, **Mari Hult, Cathrin Hällström** and **Elisabeth Andersson**; for our struggle back at KI and nowadays mostly laughs and wine!

The female doctor squad; **Sophie Norenstedt, Pia Baumann, Linda Nigard** and **Tina Linderöth Nagy** for our dinners where all pitfalls of life are shared!

My friends from medical school; **Ann Forsberg, Annette Grip** and **Pontus Gustafsson**, for still being here, quarter of a century later, sharing the challenges of life, clinical work and nice memories with me!

Catharina Ericson, for your great optimism, for sharing your surgical excellence, teaching me the fun of surgery and of friendship, and most of all, not taking it too seriously!

Cia Ihre Lundgren, for showing me how to do it! Surgery, commuter biking to KS, skiing in Åre, and the warm friendship I share with you and your lovely family!

Fredrik Lohmander, my adventurous dear friend supplying me with music and culture and beautiful surgery!

My dearest Room-mates: our “little family in the corner” is my de-briefing spot, where subjects are constantly mixed, always offering great laughs and a fantastic atmosphere!

Jana de Boniface, for your friendship, concerts, all chocolate and statistical guiding in SPSS!

Anna Koman, for being my fresh wind, bringing me music and wise thoughts!

Amelia Chiorescu, for being my true wing-mate, in OR and elsewhere, things we do is more fun done together, you make me bigger, better and happier!

Helena Sackey, for being the light in my days at work, I am so happy to be your colleague and close friend! Your commitment in my dissertation and book has been fantastic! And most of all, thank you for ALWAYS believing in me!

My dear friends, **Ulrika Birberg Thornberg, Katja Englund Kelpy, Pauline Koch, Pia Baumann, Britt-Mari Lindén, Leena Törnblom Löfkvist, Gael MacLean** and **Åsa Tedgren** for our valuable friendship!

the **Jannsen Lindeberg** family, for our great warm friendship, for all escapades and time spent while charing the essence of life (sailing) with me and my family!

My family-in-law, **Sally, Ingvar, Maggan, Susanna, Johan with family**, for being so inclusive and caring so much for me!

Söstra mi **Lisa with family**, for endless love, support and never blaming me for my time-optimism! Thank you also for the fantastic joy your family brings to our clan!

My brother **Kalle with family**, for always including us in your life, for fishing, watching, and skating adventures we share; the sleep-over partys will be more frequent now!

My father **Olle**, for inspiring me to become You! A fantastic father, ornithologist, a much-loved doctor and chef. And your invaluable help with the data collection and registration in my thesis! And for all our medical discussions!

My mother **Gunilla**, for showing me that women in our family are fantastic! Giving me the cultural and historical touch and a master in social skills! Thank you both for endless support of me and my family, providing high-class gastronomic dinners, boats, summer houses, guidance, excellent care of our children (who have become teenagers during this thesis), scheduled clan-meetings keeping us all together and most precious of all, your unquestionable love!

My man, my love, **Stefan**, thank you for taking care of me and everything else, for enduring the last 10 years or so since this book began to take place in our lives. Looking forward to say yes to biking, hiking, sailing and all adventures you suggests. You make me complete!

Sigrid and **Alice**, you are the joy of my life, the most fantastic things I ever managed to do! Thank you for being so understanding, but now I am back! Love you so much!

This thesis was supported by grants from the Swedish Breast Cancer Organisation (BRO), the Swedish Cancer Society, the BRECT Theme Network, the Percy Falk Research Foundation, the Swedish Society of Oncology and the Regional agreement on medical training and clinical research between the Stockholm County Council and Karolinska Institutet.

REFERENCES

1. Adami HO, Malker B, Holmberg L, Persson I, Stone B (1986) The relation between survival and age at diagnosis in breast cancer. *N Engl J Med* 315: 559-563.
2. Kroman N, Jensen MB, Wohlfahrt J, Mouridsen HT, Andersen PK, et al. (2000) Factors influencing the effect of age on prognosis in breast cancer: population based study. *BMJ* 320: 474-478.
3. Partridge AH, Hughes ME, Warner ET, Ottesen RA, Wong YN, et al. (2016) Subtype-Dependent Relationship Between Young Age at Diagnosis and Breast Cancer Survival. *J Clin Oncol* 34: 3308-3314.
4. Sant M, Capocaccia R, Verdecchia A, Esteve J, Gatta G, et al. (1998) Survival of women with breast cancer in Europe: variation with age, year of diagnosis and country. The EURO CARE Working Group. *Int J Cancer* 77: 679-683.
5. Chollet-Hinton L, Anders CK, Tse CK, Bell MB, Yang YC, et al. (2016) Breast cancer biologic and etiologic heterogeneity by young age and menopausal status in the Carolina Breast Cancer Study: a case-control study. *Breast Cancer Res* 18: 79.
6. Swedish National Board of Health and Welfare (2015) Statistics on Cancer Incidence 2014. Official Statistics of Sweden: Stockholm.
7. Engholm G, Ferlay J, Christensen N, Bray F, Gjerstorff ML, et al. (2010) NORDCAN--a Nordic tool for cancer information, planning, quality control and research. *Acta Oncol* 49: 725-736.
8. Ferlay J, Soerjomataram I, Ervik M, Dikshit R, Eser S, et al. (2013) GLOBOCAN 2012 v1.0, Cancer Incidence and Mortality Worldwide: IARC CancerBase No. 11 [Internet]. Lyon, France: International Agency for Research on Cancer; 2013 Available from: <http://globocan.iarc.fr>, accessed on day/month/year
9. Swedish National Board of Health and Welfare (2015) Causes of death 2014. Official Statistics of Sweden: Stockholm.
10. Global Burden of Disease Cancer C, Fitzmaurice C, Allen C, Barber RM, Barregard L, et al. (2016) Global, Regional, and National Cancer Incidence, Mortality, Years of Life Lost, Years Lived With Disability, and Disability-Adjusted Life-years for 32 Cancer Groups, 1990 to 2015: A Systematic Analysis for the Global Burden of Disease Study. *JAMA Oncol*.
11. Hou N, Huo D (2013) A trend analysis of breast cancer incidence rates in the United States from 2000 to 2009 shows a recent increase. *Breast Cancer Res Treat* 138: 633-641.
12. Dores GM, Anderson WF, Beane Freeman LE, Fraumeni JF, Jr., Curtis RE (2010) Risk of breast cancer according to clinicopathologic features among long-term survivors of Hodgkin's lymphoma treated with radiotherapy. *Br J Cancer* 103: 1081-1084.
13. Henderson TO, Amsterdam A, Bhatia S, Hudson MM, Meadows AT, et al. (2010) Systematic review: surveillance for breast cancer in women treated with chest radiation for childhood, adolescent, or young adult cancer. *Ann Intern Med* 152: 444-455; W144-454.
14. Nelson HD, Zakher B, Cantor A, Fu R, Griffin J, et al. (2012) Risk factors for breast cancer for women aged 40 to 49 years: a systematic review and meta-analysis. *Ann Intern Med* 156: 635-648.
15. Collaborative Group on Hormonal Factors in Breast C (2001) Familial breast cancer: collaborative reanalysis of individual data from 52 epidemiological studies including 58,209 women with breast cancer and 101,986 women without the disease. *Lancet* 358: 1389-1399.

16. Loman N, Johannsson O, Kristoffersson U, Olsson H, Borg A (2001) Family history of breast and ovarian cancers and BRCA1 and BRCA2 mutations in a population-based series of early-onset breast cancer. *J Natl Cancer Inst* 93: 1215-1223.
17. Eccles BK, Copson ER, Cutress RI, Maishman T, Altman DG, et al. (2015) Family history and outcome of young patients with breast cancer in the UK (POSH study). *Br J Surg* 102: 924-935.
18. Swedish National Board of Health and Welfare (2016) Population statistics of Sweden. Official Statistics of Sweden, Stockholm.
19. Mavaddat N, Peock S, Frost D, Ellis S, Platte R, et al. (2013) Cancer risks for BRCA1 and BRCA2 mutation carriers: results from prospective analysis of EMBRACE. *J Natl Cancer Inst* 105: 812-822.
20. Boyd NF, Guo H, Martin LJ, Sun L, Stone J, et al. (2007) Mammographic density and the risk and detection of breast cancer. *N Engl J Med* 356: 227-236.
21. McCormack VA, dos Santos Silva I (2006) Breast density and parenchymal patterns as markers of breast cancer risk: a meta-analysis. *Cancer Epidemiol Biomarkers Prev* 15: 1159-1169.
22. Krishnan K, Baglietto L, Stone J, Simpson JA, Severi G, et al. (2017) Longitudinal study of mammographic density measures that predict breast cancer risk. *Cancer Epidemiol Biomarkers Prev*.
23. Checka CM, Chun JE, Schnabel FR, Lee J, Toth H (2012) The relationship of mammographic density and age: implications for breast cancer screening. *AJR Am J Roentgenol* 198: W292-295.
24. Boyd NF, Dite GS, Stone J, Gunasekara A, English DR, et al. (2002) Heritability of mammographic density, a risk factor for breast cancer. *N Engl J Med* 347: 886-894.
25. Passaperuma K, Warner E, Hill KA, Gunasekara A, Yaffe MJ (2010) Is mammographic breast density a breast cancer risk factor in women with BRCA mutations? *J Clin Oncol* 28: 3779-3783.
26. Mitchell G, Antoniou AC, Warren R, Peock S, Brown J, et al. (2006) Mammographic density and breast cancer risk in BRCA1 and BRCA2 mutation carriers. *Cancer Res* 66: 1866-1872.
27. Collaborative Group on Hormonal Factors in Breast C (2002) Breast cancer and breastfeeding: collaborative reanalysis of individual data from 47 epidemiological studies in 30 countries, including 50302 women with breast cancer and 96973 women without the disease. *Lancet* 360: 187-195.
28. Beaber EF, Malone KE, Tang MT, Barlow WE, Porter PL, et al. (2014) Oral contraceptives and breast cancer risk overall and by molecular subtype among young women. *Cancer Epidemiol Biomarkers Prev* 23: 755-764.
29. Sergentanis TN, Diamantaras AA, Perlepe C, Kanavidis P, Skalkidou A, et al. (2014) IVF and breast cancer: a systematic review and meta-analysis. *Hum Reprod Update* 20: 106-123.
30. Stavola BL, Hardy R, Kuh D, Silva IS, Wadsworth M, et al. (2000) Birthweight, childhood growth and risk of breast cancer in a British cohort. *Br J Cancer* 83: 964-968.
31. Ahlgren M, Melbye M, Wohlfahrt J, Sorensen TI (2004) Growth patterns and the risk of breast cancer in women. *N Engl J Med* 351: 1619-1626.
32. Asselin-Labat ML, Vaillant F, Sheridan JM, Pal B, Wu D, et al. (2010) Control of mammary stem cell function by steroid hormone signalling. *Nature* 465: 798-802.
33. Reeves GK, Pirie K, Beral V, Green J, Spencer E, et al. (2007) Cancer incidence and mortality in relation to body mass index in the Million Women Study: cohort study. *BMJ* 335: 1134.

34. Bhaskaran K, Douglas I, Forbes H, dos-Santos-Silva I, Leon DA, et al. (2014) Body-mass index and risk of 22 specific cancers: a population-based cohort study of 5.24 million UK adults. *Lancet* 384: 755-765.
35. Brightmore TG, Greening WP, Hamlin I (1970) An analysis of clinical and histopathological features in 101 cases of carcinoma of breast in women under 35 years of age. *Br J Cancer* 24: 644-669.
36. Ashley S, Royle GT, Corder A, Herbert A, Guyer PB, et al. (1989) Clinical, radiological and cytological diagnosis of breast cancer in young women. *Br J Surg* 76: 835-837.
37. Copson E, Eccles B, Maishman T, Gerty S, Stanton L, et al. (2013) Prospective observational study of breast cancer treatment outcomes for UK women aged 18-40 years at diagnosis: the POSH study. *J Natl Cancer Inst* 105: 978-988.
38. Mandelson MT, Oestreicher N, Porter PL, White D, Finder CA, et al. (2000) Breast density as a predictor of mammographic detection: comparison of interval- and screen-detected cancers. *J Natl Cancer Inst* 92: 1081-1087.
39. Houssami N, Irwig L, Simpson JM, McKessar M, Blome S, et al. (2003) Sydney Breast Imaging Accuracy Study: Comparative sensitivity and specificity of mammography and sonography in young women with symptoms. *AJR Am J Roentgenol* 180: 935-940.
40. Houssami N, Turner R, Morrow M (2013) Preoperative magnetic resonance imaging in breast cancer: meta-analysis of surgical outcomes. *Ann Surg* 257: 249-255.
41. Houssami N, Turner R, Macaskill P, Turnbull LW, McCready DR, et al. (2014) An individual person data meta-analysis of preoperative magnetic resonance imaging and breast cancer recurrence. *J Clin Oncol* 32: 392-401.
42. Saslow D, Boetes C, Burke W, Harms S, Leach MO, et al. (2007) American Cancer Society guidelines for breast screening with MRI as an adjunct to mammography. *CA Cancer J Clin* 57: 75-89.
43. Mukherjee SD, Hodgson N, Lovrics PJ, Dhamanaskar K, Minuk T, et al. (2016) A Retrospective Study Evaluating the Impact of Preoperative Breast MRI on Surgical Decision-Making in Young Patients (≤ 50 Years) with Invasive Breast Cancer. *Breast Cancer (Auckl)* 10: 53-60.
44. Gonzalez V, Sandelin K, Karlsson A, Aberg W, Lofgren L, et al. (2014) Preoperative MRI of the breast (POMB) influences primary treatment in breast cancer: a prospective, randomized, multicenter study. *World J Surg* 38: 1685-1693.
45. Brem RF, Tabar L, Duffy SW, Inciardi MF, Guingrich JA, et al. (2015) Assessing improvement in detection of breast cancer with three-dimensional automated breast US in women with dense breast tissue: the SomoInsight Study. *Radiology* 274: 663-673.
46. Wilczek B, Wilczek HE, Rasouliyan L, Leifland K (2016) Adding 3D automated breast ultrasound to mammography screening in women with heterogeneously and extremely dense breasts: Report from a hospital-based, high-volume, single-center breast cancer screening program. *Eur J Radiol* 85: 1554-1563.
47. Dawson AE, Mulford DK, Taylor AS, Logan-Young W (1998) Breast carcinoma detection in women age 35 years and younger: mammography and diagnosis by fine-needle aspiration cytology. *Cancer* 84: 163-168.
48. Coates AS, Winer EP, Goldhirsch A, Gelber RD, Gnani M, et al. (2015) Tailoring therapies--improving the management of early breast cancer: St Gallen International Expert Consensus on the Primary Therapy of Early Breast Cancer 2015. *Ann Oncol* 26: 1533-1546.

49. Broeders M, Moss S, Nystrom L, Njor S, Jonsson H, et al. (2012) The impact of mammographic screening on breast cancer mortality in Europe: a review of observational studies. *J Med Screen* 19 Suppl 1: 14-25.
50. Bjurstam N, Bjorneld L, Warwick J, Sala E, Duffy SW, et al. (2003) The Gothenburg Breast Screening Trial. *Cancer* 97: 2387-2396.
51. Moss SM, Cuckle H, Evans A, Johns L, Waller M, et al. (2006) Effect of mammographic screening from age 40 years on breast cancer mortality at 10 years' follow-up: a randomised controlled trial. *Lancet* 368: 2053-2060.
52. Bjurstam NG, Bjorneld LM, Duffy SW (2016) Updated results of the Gothenburg Trial of Mammographic Screening. *Cancer* 122: 1832-1835.
53. Bevers TB, Anderson BO, Bonaccio E, Buys S, Daly MB, et al. (2009) NCCN clinical practice guidelines in oncology: breast cancer screening and diagnosis. *J Natl Compr Canc Netw* 7: 1060-1096.
54. Narayan AK, Visvanathan K, Harvey SC (2016) Comparative effectiveness of breast MRI and mammography in screening young women with elevated risk of developing breast cancer: a retrospective cohort study. *Breast Cancer Res Treat* 158: 583-589.
55. Aalders KC, Postma EL, Strobbe LJ, van der Heiden-van der Loo M, Sonke GS, et al. (2016) Contemporary Locoregional Recurrence Rates in Young Patients With Early-Stage Breast Cancer. *J Clin Oncol* 34: 2107-2114.
56. Durbecq V, Ameys L, Veys I, Paesmans M, Desmedt C, et al. (2008) A significant proportion of elderly patients develop hormone-dependant "luminal-B" tumours associated with aggressive characteristics. *Crit Rev Oncol Hematol* 67: 80-92.
57. Sabiani L, Houvenaeghel G, Heinemann M, Reyat F, Classe JM, et al. (2016) Breast cancer in young women: Pathologic features and molecular phenotype. *Breast* 29: 109-116.
58. Brinton LA, Sherman ME, Carreon JD, Anderson WF (2008) Recent trends in breast cancer among younger women in the United States. *J Natl Cancer Inst* 100: 1643-1648.
59. Swain SM, Nunes R, Yoshizawa C, Rothney M, Sing AP (2015) Quantitative Gene Expression by Recurrence Score in ER-Positive Breast Cancer, by Age. *Adv Ther* 32: 1222-1236.
60. Arpino G, Bardou VJ, Clark GM, Elledge RM (2004) Infiltrating lobular carcinoma of the breast: tumor characteristics and clinical outcome. *Breast Cancer Res* 6: R149-156.
61. Wang XX, Jiang YZ, Liu XY, Li JJ, Song CG, et al. (2016) Difference in characteristics and outcomes between medullary breast carcinoma and invasive ductal carcinoma: a population based study from SEER 18 database. *Oncotarget* 7: 22665-22673.
62. Bayraktar S, Amendola L, Gutierrez-Barrera AM, Hashmi SS, Amos C, et al. (2014) Clinicopathologic characteristics of breast cancer in BRCA-carriers and non-carriers in women 35 years of age or less. *Breast* 23: 770-774.
63. Wolf I, Ben-Baruch N, Shapira-Frommer R, Rizel S, Goldberg H, et al. (2008) Association between standard clinical and pathologic characteristics and the 21-gene recurrence score in breast cancer patients: a population-based study. *Cancer* 112: 731-736.
64. Bharat A, Aft RL, Gao F, Margenthaler JA (2009) Patient and tumor characteristics associated with increased mortality in young women (< or =40 years) with breast cancer. *J Surg Oncol* 100: 248-251.
65. Chung M, Chang HR, Bland KI, Wanebo HJ (1996) Younger women with breast carcinoma have a poorer prognosis than older women. *Cancer* 77: 97-103.

66. Gnerlich JL, Deshpande AD, Jeffe DB, Sweet A, White N, et al. (2009) Elevated breast cancer mortality in women younger than age 40 years compared with older women is attributed to poorer survival in early-stage disease. *J Am Coll Surg* 208: 341-347.
67. Maggard MA, O'Connell JB, Lane KE, Liu JH, Etzioni DA, et al. (2003) Do young breast cancer patients have worse outcomes? *J Surg Res* 113: 109-113.
68. Gajdos C, Tartter PI, Bleiweiss IJ, Bodian C, Brower ST (2000) Stage 0 to stage III breast cancer in young women. *J Am Coll Surg* 190: 523-529.
69. Partridge AH, Hughes ME, Ottesen RA, Wong YN, Edge SB, et al. (2012) The effect of age on delay in diagnosis and stage of breast cancer. *Oncologist* 17: 775-782.
70. Saadatmand S, Bretveld R, Siesling S, Tilanus-Linthorst MM (2015) Influence of tumour stage at breast cancer detection on survival in modern times: population based study in 173,797 patients. *BMJ* 351: h4901.
71. Keegan TH, DeRouen MC, Press DJ, Kurian AW, Clarke CA (2012) Occurrence of breast cancer subtypes in adolescent and young adult women. *Breast Cancer Res* 14: R55.
72. Carter CL, Allen C, Henson DE (1989) Relation of tumor size, lymph node status, and survival in 24,740 breast cancer cases. *Cancer* 63: 181-187.
73. Valagussa P, Bonadonna G, Veronesi U (1978) Patterns of relapse and survival following radical mastectomy. Analysis of 716 consecutive patients. *Cancer* 41: 1170-1178.
74. Crabb SJ, Cheang MC, Leung S, Immonen T, Nielsen TO, et al. (2008) Basal breast cancer molecular subtype predicts for lower incidence of axillary lymph node metastases in primary breast cancer. *Clin Breast Cancer* 8: 249-256.
75. Kim H, Cho J, Kwon SY, Kang SH (2016) Biologic subtype is a more important prognostic factor than nodal involvement in patients with stages I and II breast carcinoma. *Ann Surg Treat Res* 90: 1-9.
76. Yang ZJ, Yu Y, Hou XW, Chi JR, Ge J, et al. (2017) The prognostic value of node status in different breast cancer subtypes. *Oncotarget* 8: 4563-4571.
77. Parise CA, Caggiano V (2014) Breast Cancer Survival Defined by the ER/PR/HER2 Subtypes and a Surrogate Classification according to Tumor Grade and Immunohistochemical Biomarkers. *J Cancer Epidemiol* 2014: 469251.
78. Elston CW, Ellis IO (1991) Pathological prognostic factors in breast cancer. I. The value of histological grade in breast cancer: experience from a large study with long-term follow-up. *Histopathology* 19: 403-410.
79. Canello G, Maisonneuve P, Rotmensz N, Viale G, Mastropasqua MG, et al. (2010) Prognosis and adjuvant treatment effects in selected breast cancer subtypes of very young women (<35 years) with operable breast cancer. *Ann Oncol* 21: 1974-1981.
80. Maishman T, Cutress RI, Hernandez A, Gerty S, Copson ER, et al. (2016) Local Recurrence and Breast Oncological Surgery in Young Women With Breast Cancer: The POSH Observational Cohort Study. *Ann Surg*.
81. Yager JD, Davidson NE (2006) Estrogen carcinogenesis in breast cancer. *N Engl J Med* 354: 270-282.
82. Adami HO, Graffman S, Lindgren A, Sallstrom J (1985) Prognostic implication of estrogen receptor content in breast cancer. *Breast Cancer Res Treat* 5: 293-300.

83. Early Breast Cancer Trialists' Collaborative G (2005) Effects of chemotherapy and hormonal therapy for early breast cancer on recurrence and 15-year survival: an overview of the randomised trials. *Lancet* 365: 1687-1717.
84. Cui X, Schiff R, Arpino G, Osborne CK, Lee AV (2005) Biology of progesterone receptor loss in breast cancer and its implications for endocrine therapy. *J Clin Oncol* 23: 7721-7735.
85. Osborne CK (1998) Tamoxifen in the treatment of breast cancer. *N Engl J Med* 339: 1609-1618.
86. Anders CK, Hsu DS, Broadwater G, Acharya CR, Foekens JA, et al. (2008) Young age at diagnosis correlates with worse prognosis and defines a subset of breast cancers with shared patterns of gene expression. *J Clin Oncol* 26: 3324-3330.
87. Holli K, Isola J (1997) Effect of age on the survival of breast cancer patients. *Eur J Cancer* 33: 425-428.
88. Harvey JM, Clark GM, Osborne CK, Allred DC (1999) Estrogen receptor status by immunohistochemistry is superior to the ligand-binding assay for predicting response to adjuvant endocrine therapy in breast cancer. *J Clin Oncol* 17: 1474-1481.
89. Hammond ME, Hayes DF, Dowsett M, Allred DC, Hagerty KL, et al. (2010) American Society of Clinical Oncology/College Of American Pathologists guideline recommendations for immunohistochemical testing of estrogen and progesterone receptors in breast cancer. *J Clin Oncol* 28: 2784-2795.
90. Yi M, Huo L, Koenig KB, Mittendorf EA, Meric-Bernstam F, et al. (2014) Which threshold for ER positivity? a retrospective study based on 9639 patients. *Ann Oncol* 25: 1004-1011.
91. Deyarmin B, Kane JL, Valente AL, van Laar R, Gallagher C, et al. (2013) Effect of ASCO/CAP guidelines for determining ER status on molecular subtype. *Ann Surg Oncol* 20: 87-93.
92. Horwitz KB, McGuire WL (1978) Estrogen control of progesterone receptor in human breast cancer. Correlation with nuclear processing of estrogen receptor. *J Biol Chem* 253: 2223-2228.
93. Nishimukai A, Yagi T, Yanai A, Miyagawa Y, Enomoto Y, et al. (2015) High Ki-67 Expression and Low Progesterone Receptor Expression Could Independently Lead to a Worse Prognosis for Postmenopausal Patients With Estrogen Receptor-Positive and HER2-Negative Breast Cancer. *Clin Breast Cancer* 15: 204-211.
94. Early Breast Cancer Trialists' Collaborative G, Davies C, Godwin J, Gray R, Clarke M, et al. (2011) Relevance of breast cancer hormone receptors and other factors to the efficacy of adjuvant tamoxifen: patient-level meta-analysis of randomised trials. *Lancet* 378: 771-784.
95. Hefti MM, Hu R, Knoblauch NW, Collins LC, Haibe-Kains B, et al. (2013) Estrogen receptor negative/progesterone receptor positive breast cancer is not a reproducible subtype. *Breast Cancer Res* 15: R68.
96. Olivotto IA, Truong PT, Speers CH, Bernstein V, Allan SJ, et al. (2004) Time to stop progesterone receptor testing in breast cancer management. *J Clin Oncol* 22: 1769-1770.
97. Horwitz KB, McGuire WL (1975) Specific progesterone receptors in human breast cancer. *Steroids* 25: 497-505.
98. Mohammed H, Russell IA, Stark R, Rueda OM, Hickey TE, et al. (2015) Progesterone receptor modulates ER α action in breast cancer. *Nature* 523: 313-317.
99. Blows FM, Driver KE, Schmidt MK, Broeks A, van Leeuwen FE, et al. (2010) Subtyping of breast cancer by immunohistochemistry to investigate a relationship between subtype and short and long term survival: a collaborative analysis of data for 10,159 cases from 12 studies. *PLoS Med* 7: e1000279.

100. Purdie CA, Quinlan P, Jordan LB, Ashfield A, Ogston S, et al. (2014) Progesterone receptor expression is an independent prognostic variable in early breast cancer: a population-based study. *Br J Cancer* 110: 565-572.
101. Viale G, Regan MM, Maiorano E, Mastropasqua MG, Dell'Orto P, et al. (2007) Prognostic and predictive value of centrally reviewed expression of estrogen and progesterone receptors in a randomized trial comparing letrozole and tamoxifen adjuvant therapy for postmenopausal early breast cancer: BIG 1-98. *J Clin Oncol* 25: 3846-3852.
102. Prat A, Cheang MC, Martin M, Parker JS, Carrasco E, et al. (2013) Prognostic significance of progesterone receptor-positive tumor cells within immunohistochemically defined luminal A breast cancer. *J Clin Oncol* 31: 203-209.
103. Yarden Y, Sliwkowski MX (2001) Untangling the ErbB signalling network. *Nat Rev Mol Cell Biol* 2: 127-137.
104. Slamon DJ, Clark GM, Wong SG, Levin WJ, Ullrich A, et al. (1987) Human breast cancer: correlation of relapse and survival with amplification of the HER-2/neu oncogene. *Science* 235: 177-182.
105. Azim HA, Jr., Michiels S, Bedard PL, Singhal SK, Criscitiello C, et al. (2012) Elucidating prognosis and biology of breast cancer arising in young women using gene expression profiling. *Clin Cancer Res* 18: 1341-1351.
106. Kheirlehd EH, Boggs JM, Curran C, Glynn RW, Dooley C, et al. (2011) Younger age as a prognostic indicator in breast cancer: a cohort study. *BMC Cancer* 11: 383.
107. Wolff AC, Hammond ME, Hicks DG, Dowsett M, McShane LM, et al. (2013) Recommendations for human epidermal growth factor receptor 2 testing in breast cancer: American Society of Clinical Oncology/College of American Pathologists clinical practice guideline update. *J Clin Oncol* 31: 3997-4013.
108. Ryden L, Haglund M, Bendahl PO, Hatschek T, Kolaric A, et al. (2009) Reproducibility of human epidermal growth factor receptor 2 analysis in primary breast cancer: a national survey performed at pathology departments in Sweden. *Acta Oncol* 48: 860-866.
109. Hanahan D, Weinberg RA (2011) Hallmarks of cancer: the next generation. *Cell* 144: 646-674.
110. Paik S, Shak S, Tang G, Kim C, Baker J, et al. (2004) A multigene assay to predict recurrence of tamoxifen-treated, node-negative breast cancer. *N Engl J Med* 351: 2817-2826.
111. Kim J, Han W, Jung SY, Park YH, Moon HG, et al. (2015) The Value of Ki67 in Very Young Women with Hormone Receptor-Positive Breast Cancer: Retrospective Analysis of 9,321 Korean Women. *Ann Surg Oncol* 22: 3481-3488.
112. Morrison DH, Rahardja D, King E, Peng Y, Sarode VR (2012) Tumour biomarker expression relative to age and molecular subtypes of invasive breast cancer. *Br J Cancer* 107: 382-387.
113. Kim HK, Park IA, Heo DS, Noh DY, Choe KJ, et al. (2001) Cyclin E overexpression as an independent risk factor of visceral relapse in breast cancer. *Eur J Surg Oncol* 27: 464-471.
114. Rudolph P, Kuhling H, Alm P, Ferno M, Baldetorp B, et al. (2003) Differential prognostic impact of the cyclins E and B in premenopausal and postmenopausal women with lymph node-negative breast cancer. *Int J Cancer* 105: 674-680.
115. Strand C, Ahlin C, Bendahl PO, Fjallskog ML, Hedenfalk I, et al. (2012) Combination of the proliferation marker cyclin A, histological grade, and estrogen receptor status in a new variable with high prognostic impact in breast cancer. *Breast Cancer Res Treat* 131: 33-40.

116. Voduc D, Nielsen TO, Cheang MC, Foulkes WD (2008) The combination of high cyclin E and Skp2 expression in breast cancer is associated with a poor prognosis and the basal phenotype. *Hum Pathol* 39: 1431-1437.
117. Wang L, Shao ZM (2006) Cyclin e expression and prognosis in breast cancer patients: a meta-analysis of published studies. *Cancer Invest* 24: 581-587.
118. Gerdes J, Lemke H, Baisch H, Wacker HH, Schwab U, et al. (1984) Cell cycle analysis of a cell proliferation-associated human nuclear antigen defined by the monoclonal antibody Ki-67. *J Immunol* 133: 1710-1715.
119. Cheang MC, Chia SK, Voduc D, Gao D, Leung S, et al. (2009) Ki67 index, HER2 status, and prognosis of patients with luminal B breast cancer. *J Natl Cancer Inst* 101: 736-750.
120. Motokura T, Bloom T, Kim HG, Juppner H, Ruderman JV, et al. (1991) A novel cyclin encoded by a bcl1-linked candidate oncogene. *Nature* 350: 512-515.
121. Malumbres M, Barbacid M (2009) Cell cycle, CDKs and cancer: a changing paradigm. *Nat Rev Cancer* 9: 153-166.
122. Chung J, Noh H, Park KH, Choi E, Han A (2014) Longer survival in patients with breast cancer with cyclin d1 over-expression after tumor recurrence: longer, but occupied with disease. *J Breast Cancer* 17: 47-53.
123. Guo L, Liu S, Jakulin A, Yilamu D, Wang B, et al. (2015) Positive expression of cyclin D1 is an indicator for the evaluation of the prognosis of breast cancer. *Int J Clin Exp Med* 8: 18656-18664.
124. Agarwal R, Gonzalez-Angulo AM, Myhre S, Carey M, Lee JS, et al. (2009) Integrative analysis of cyclin protein levels identifies cyclin b1 as a classifier and predictor of outcomes in breast cancer. *Clin Cancer Res* 15: 3654-3662.
125. Myhre S, Lingjaerde OC, Hennessy BT, Aure MR, Carey MS, et al. (2013) Influence of DNA copy number and mRNA levels on the expression of breast cancer related proteins. *Mol Oncol* 7: 704-718.
126. Han S, Park K, Bae BN, Kim KH, Kim HJ, et al. (2003) Prognostic implication of cyclin E expression and its relationship with cyclin D1 and p27Kip1 expression on tissue microarrays of node negative breast cancer. *J Surg Oncol* 83: 241-247.
127. Lee MK, Varzi LA, Chung DU, Cao MA, Gornbein J, et al. (2015) The Effect of Young Age in Hormone Receptor Positive Breast Cancer. *Biomed Res Int* 2015: 325715.
128. Shen SD, Zhong SZ, Wang CZ, Huang WH (2015) Correlation of lymphovascular invasion with clinicopathological factors in invasive breast cancer: a meta-analysis. *Int J Clin Exp Med* 8: 17789-17795.
129. Gujam FJ, Going JJ, Edwards J, Mohammed ZM, McMillan DC (2014) The role of lymphatic and blood vessel invasion in predicting survival and methods of detection in patients with primary operable breast cancer. *Crit Rev Oncol Hematol* 89: 231-241.
130. Rakha EA, Martin S, Lee AH, Morgan D, Pharoah PD, et al. (2012) The prognostic significance of lymphovascular invasion in invasive breast carcinoma. *Cancer* 118: 3670-3680.
131. Khwaja SS, Ivanovich J, DeWees TA, Ochoa L, Mullen DF, et al. (2016) Lymphovascular space invasion and lack of downstaging after neoadjuvant chemotherapy are strong predictors of adverse outcome in young women with locally advanced breast cancer. *Cancer Med* 5: 230-238.
132. Lin PH, Yeh MH, Liu LC, Chen CJ, Tsui YC, et al. (2013) Clinical and pathologic risk factors of tumor recurrence in patients with node-negative early breast cancer after mastectomy. *J Surg Oncol* 108: 352-357.

133. Uematsu T, Kasami M, Watanabe J, Takahashi K, Yamasaki S, et al. (2011) Is lymphovascular invasion degree one of the important factors to predict neoadjuvant chemotherapy efficacy in breast cancer? *Breast Cancer* 18: 309-313.
134. Ejlertsen B, Jensen MB, Rank F, Rasmussen BB, Christiansen P, et al. (2009) Population-based study of peritumoral lymphovascular invasion and outcome among patients with operable breast cancer. *J Natl Cancer Inst* 101: 729-735.
135. Perou CM, Sorlie T, Eisen MB, van de Rijn M, Jeffrey SS, et al. (2000) Molecular portraits of human breast tumours. *Nature* 406: 747-752.
136. Sorlie T, Perou CM, Tibshirani R, Aas T, Geisler S, et al. (2001) Gene expression patterns of breast carcinomas distinguish tumor subclasses with clinical implications. *Proc Natl Acad Sci U S A* 98: 10869-10874.
137. Prat A, Parker JS, Karginova O, Fan C, Livasy C, et al. (2010) Phenotypic and molecular characterization of the claudin-low intrinsic subtype of breast cancer. *Breast Cancer Res* 12: R68.
138. Reis-Filho JS, Pusztai L (2011) Gene expression profiling in breast cancer: classification, prognostication, and prediction. *Lancet* 378: 1812-1823.
139. Farmer P, Bonnefoi H, Becette V, Tubiana-Hulin M, Fumoleau P, et al. (2005) Identification of molecular apocrine breast tumours by microarray analysis. *Oncogene* 24: 4660-4671.
140. Cuzick J, Dowsett M, Pineda S, Wale C, Salter J, et al. (2011) Prognostic value of a combined estrogen receptor, progesterone receptor, Ki-67, and human epidermal growth factor receptor 2 immunohistochemical score and comparison with the Genomic Health recurrence score in early breast cancer. *J Clin Oncol* 29: 4273-4278.
141. Cheang MC, Voduc D, Bajdik C, Leung S, McKinney S, et al. (2008) Basal-like breast cancer defined by five biomarkers has superior prognostic value than triple-negative phenotype. *Clin Cancer Res* 14: 1368-1376.
142. Cancellato G, Maisonneuve P, Rotmensz N, Viale G, Mastropasqua MG, et al. (2013) Progesterone receptor loss identifies Luminal B breast cancer subgroups at higher risk of relapse. *Ann Oncol* 24: 661-668.
143. Li AQ, Zhou SL, Li M, Xu Y, Shui RH, et al. (2015) Clinicopathologic Characteristics of Oestrogen Receptor-Positive/Progesterone Receptor-Negative/Her2-Negative Breast Cancer According to a Novel Definition of Negative Progesterone Receptor Status: A Large Population-Based Study from China. *PLoS One* 10: e0125067.
144. Maisonneuve P, Disalvatore D, Rotmensz N, Curigliano G, Colleoni M, et al. (2014) Proposed new clinicopathological surrogate definitions of luminal A and luminal B (HER2-negative) intrinsic breast cancer subtypes. *Breast Cancer Res* 16: R65.
145. Jenkins EO, Deal AM, Anders CK, Prat A, Perou CM, et al. (2014) Age-specific changes in intrinsic breast cancer subtypes: a focus on older women. *Oncologist* 19: 1076-1083.
146. Lin CH, Chuang PY, Chiang CJ, Lu YS, Cheng AL, et al. (2014) Distinct clinicopathological features and prognosis of emerging young-female breast cancer in an East Asian country: a nationwide cancer registry-based study. *Oncologist* 19: 583-591.
147. Tang LC, Jin X, Yang HY, He M, Chang H, et al. (2015) Luminal B subtype: a key factor for the worse prognosis of young breast cancer patients in China. *BMC Cancer* 15: 201.
148. Carey LA, Perou CM, Livasy CA, Dressler LG, Cowan D, et al. (2006) Race, breast cancer subtypes, and survival in the Carolina Breast Cancer Study. *JAMA* 295: 2492-2502.

149. Park YH, Lee SJ, Jung HA, Kim SM, Kim MJ, et al. (2015) Prevalence and clinical outcomes of young breast cancer (YBC) patients according to intrinsic breast cancer subtypes: Single institutional experience in Korea. *Breast* 24: 213-217.
150. Partridge AH, Gelber S, Piccart-Gebhart MJ, Focant F, Scullion M, et al. (2013) Effect of age on breast cancer outcomes in women with human epidermal growth factor receptor 2-positive breast cancer: results from a herceptin adjuvant trial. *J Clin Oncol* 31: 2692-2698.
151. Radosa JC, Eaton A, Stempel M, Khandar A, Liedtke C, et al. (2017) Evaluation of Local and Distant Recurrence Patterns in Patients with Triple-Negative Breast Cancer According to Age. *Ann Surg Oncol* 24: 698-704.
152. Sheridan W, Scott T, Caroline S, Yvonne Z, Vanessa B, et al. (2014) Breast cancer in young women: have the prognostic implications of breast cancer subtypes changed over time? *Breast Cancer Res Treat* 147: 617-629.
153. De Maeyer L, Van Limbergen E, De Nys K, Moerman P, Pochet N, et al. (2008) Does estrogen receptor negative/progesterone receptor positive breast carcinoma exist? *J Clin Oncol* 26: 335-336; author reply 336-338.
154. Rakha EA, El-Sayed ME, Green AR, Paish EC, Powe DG, et al. (2007) Biologic and clinical characteristics of breast cancer with single hormone receptor positive phenotype. *J Clin Oncol* 25: 4772-4778.
155. Schroth W, Winter S, Buttner F, Goletz S, Faisst S, et al. (2016) Clinical outcome and global gene expression data support the existence of the estrogen receptor-negative/progesterone receptor-positive invasive breast cancer phenotype. *Breast Cancer Res Treat* 155: 85-97.
156. Yu KD, Di GH, Wu J, Lu JS, Shen KW, et al. (2008) Breast cancer patients with estrogen receptor-negative/progesterone receptor-positive tumors: being younger and getting less benefit from adjuvant tamoxifen treatment. *J Cancer Res Clin Oncol* 134: 1347-1354.
157. Margolin S, Werelius B, Fornander T, Lindblom A (2004) BRCA1 mutations in a population-based study of breast cancer in Stockholm County. *Genet Test* 8: 127-132.
158. Rosenberg SM, Ruddy KJ, Tamimi RM, Gelber S, Schapira L, et al. (2016) BRCA1 and BRCA2 Mutation Testing in Young Women With Breast Cancer. *JAMA Oncol* 2: 730-736.
159. Tung N, Lin NU, Kidd J, Allen BA, Singh N, et al. (2016) Frequency of Germline Mutations in 25 Cancer Susceptibility Genes in a Sequential Series of Patients With Breast Cancer. *J Clin Oncol* 34: 1460-1468.
160. Buys SS, Sandbach JF, Gammon A, Patel G, Kidd J, et al. (2017) A study of over 35,000 women with breast cancer tested with a 25-gene panel of hereditary cancer genes. *Cancer*.
161. Daly MB, Pilarski R, Axilbund JE, Berry M, Buys SS, et al. (2016) Genetic/Familial High-Risk Assessment: Breast and Ovarian, Version 2.2015. *J Natl Compr Canc Netw* 14: 153-162.
162. Vila J, Gandini S, Gentilini O (2015) Overall survival according to type of surgery in young (</=40 years) early breast cancer patients: A systematic meta-analysis comparing breast-conserving surgery versus mastectomy. *Breast* 24: 175-181.
163. Ye JC, Yan W, Christos PJ, Nori D, Ravi A (2015) Equivalent Survival With Mastectomy or Breast-conserving Surgery Plus Radiation in Young Women Aged < 40 Years With Early-Stage Breast Cancer: A National Registry-based Stage-by-Stage Comparison. *Clin Breast Cancer* 15: 390-397.
164. Vrieling C, Collette L, Fourquet A, Hoogenraad WJ, Horiot JC, et al. (2003) Can patient-, treatment- and pathology-related characteristics explain the high local recurrence rate following breast-conserving therapy in young patients? *Eur J Cancer* 39: 932-944.

165. Jobsen JJ, van der Palen J, Ong F, Meerwaldt JH (2003) The value of a positive margin for invasive carcinoma in breast-conservative treatment in relation to local recurrence is limited to young women only. *Int J Radiat Oncol Biol Phys* 57: 724-731.
166. Paluch-Shimon S, Pagani O, Partridge AH, Bar-Meir E, Fallowfield L, et al. (2016) Second international consensus guidelines for breast cancer in young women (BCY2). *Breast* 26: 87-99.
167. Cao JQ, Truong PT, Olivotto IA, Olson R, Coulombe G, et al. (2014) Should women younger than 40 years of age with invasive breast cancer have a mastectomy? 15-year outcomes in a population-based cohort. *Int J Radiat Oncol Biol Phys* 90: 509-517.
168. Tryfonidis K, Senkus E, Cardoso MJ, Cardoso F (2015) Management of locally advanced breast cancer-perspectives and future directions. *Nat Rev Clin Oncol* 12: 147-162.
169. Eriksson M, Anveden L, Celebioglu F, Dahlberg K, Meldahl I, et al. (2013) Radiotherapy in implant-based immediate breast reconstruction: risk factors, surgical outcomes, and patient-reported outcome measures in a large Swedish multicenter cohort. *Breast Cancer Res Treat* 142: 591-601.
170. Berbers J, van Baardwijk A, Houben R, Heuts E, Smidt M, et al. (2014) 'Reconstruction: before or after postmastectomy radiotherapy?' A systematic review of the literature. *Eur J Cancer* 50: 2752-2762.
171. Paskett ED, Naughton MJ, McCoy TP, Case LD, Abbott JM (2007) The epidemiology of arm and hand swelling in premenopausal breast cancer survivors. *Cancer Epidemiol Biomarkers Prev* 16: 775-782.
172. Giuliano AE, Hunt KK, Ballman KV, Beitsch PD, Whitworth PW, et al. (2011) Axillary dissection vs no axillary dissection in women with invasive breast cancer and sentinel node metastasis: a randomized clinical trial. *JAMA* 305: 569-575.
173. Fredriksson I, Liljegren G, Arnesson LG, Emdin SO, Palm-Sjovall M, et al. (2002) Consequences of axillary recurrence after conservative breast surgery. *Br J Surg* 89: 902-908.
174. Goldhirsch A, Wood WC, Senn HJ, Glick JH, Gelber RD (1995) Fifth International Conference on Adjuvant Therapy of Breast Cancer, St Gallen, March 1995. International Consensus Panel on the Treatment of Primary Breast Cancer. *Eur J Cancer* 31A: 1754-1759.
175. Goldhirsch A, Glick JH, Gelber RD, Coates AS, Thurlimann B, et al. (2005) Meeting highlights: international expert consensus on the primary therapy of early breast cancer 2005. *Ann Oncol* 16: 1569-1583.
176. Goldhirsch A, Ingle JN, Gelber RD, Coates AS, Thurlimann B, et al. (2009) Thresholds for therapies: highlights of the St Gallen International Expert Consensus on the primary therapy of early breast cancer 2009. *Ann Oncol* 20: 1319-1329.
177. van Herk-Sukel MP, van de Poll-Franse LV, Creemers GJ, Lemmens VE, van der Linden PD, et al. (2013) Major changes in chemotherapy regimens administered to breast cancer patients during 2000-2008 in the Netherlands. *Breast J* 19: 394-401.
178. Regional Cancer Center Sweden (RCC) (2015) National Breast Cancer Registry, report 2015. http://www.cancercentrum.se/globalassets/cancerdiagnoser/brost/kvalitetsregister/nationell_brostdiagnoser_rapport_2015-2pdf.pdf.
179. Loibl S, Jackisch C, Lederer B, Untch M, Paepke S, et al. (2015) Outcome after neoadjuvant chemotherapy in young breast cancer patients: a pooled analysis of individual patient data from eight prospectively randomized controlled trials. *Breast Cancer Res Treat* 152: 377-387.

180. Huober J, von Minckwitz G, Denkert C, Tesch H, Weiss E, et al. (2010) Effect of neoadjuvant anthracycline-taxane-based chemotherapy in different biological breast cancer phenotypes: overall results from the GeparTrio study. *Breast Cancer Res Treat* 124: 133-140.
181. Petrelli F, Coinu A, Borgonovo K, Cabiddu M, Ghilardi M, et al. (2014) The value of platinum agents as neoadjuvant chemotherapy in triple-negative breast cancers: a systematic review and meta-analysis. *Breast Cancer Res Treat* 144: 223-232.
182. Harbeck N, Gnant M (2016) Breast cancer. *Lancet*.
183. Glick JH, Gelber RD, Goldhirsch A, Senn HJ (1992) Meeting highlights: adjuvant therapy for primary breast cancer. *J Natl Cancer Inst* 84: 1479-1485.
184. Davies C, Pan H, Godwin J, Gray R, Arriagada R, et al. (2013) Long-term effects of continuing adjuvant tamoxifen to 10 years versus stopping at 5 years after diagnosis of oestrogen receptor-positive breast cancer: ATLAS, a randomised trial. *Lancet* 381: 805-816.
185. Pagani O, Regan MM, Walley BA, Fleming GF, Colleoni M, et al. (2014) Adjuvant exemestane with ovarian suppression in premenopausal breast cancer. *N Engl J Med* 371: 107-118.
186. Francis PA, Regan MM, Fleming GF, Lang I, Ciruelos E, et al. (2015) Adjuvant ovarian suppression in premenopausal breast cancer. *N Engl J Med* 372: 436-446.
187. Ades F, Zardavas D, Bozovic-Spasojevic I, Pugliano L, Fumagalli D, et al. (2014) Luminal B breast cancer: molecular characterization, clinical management, and future perspectives. *J Clin Oncol* 32: 2794-2803.
188. Ahn SH, Son BH, Kim SW, Kim SI, Jeong J, et al. (2007) Poor outcome of hormone receptor-positive breast cancer at very young age is due to tamoxifen resistance: nationwide survival data in Korea--a report from the Korean Breast Cancer Society. *J Clin Oncol* 25: 2360-2368.
189. Stendahl M, Ryden L, Nordenskjold B, Jonsson PE, Landberg G, et al. (2006) High progesterone receptor expression correlates to the effect of adjuvant tamoxifen in premenopausal breast cancer patients. *Clin Cancer Res* 12: 4614-4618.
190. He W, Fang F, Varnum C, Eriksson M, Hall P, et al. (2015) Predictors of Discontinuation of Adjuvant Hormone Therapy in Patients With Breast Cancer. *J Clin Oncol* 33: 2262-2269.
191. Hershman DL, Kushi LH, Shao T, Buono D, Kershenbaum A, et al. (2010) Early discontinuation and nonadherence to adjuvant hormonal therapy in a cohort of 8,769 early-stage breast cancer patients. *J Clin Oncol* 28: 4120-4128.
192. Partridge AH, Wang PS, Winer EP, Avorn J (2003) Nonadherence to adjuvant tamoxifen therapy in women with primary breast cancer. *J Clin Oncol* 21: 602-606.
193. Piccart-Gebhart MJ, Procter M, Leyland-Jones B, Goldhirsch A, Untch M, et al. (2005) Trastuzumab after adjuvant chemotherapy in HER2-positive breast cancer. *N Engl J Med* 353: 1659-1672.
194. Bartelink H, Horiot JC, Poortmans P, Struikmans H, Van den Bogaert W, et al. (2001) Recurrence rates after treatment of breast cancer with standard radiotherapy with or without additional radiation. *N Engl J Med* 345: 1378-1387.
195. Bartelink H, Horiot JC, Poortmans PM, Struikmans H, Van den Bogaert W, et al. (2007) Impact of a higher radiation dose on local control and survival in breast-conserving therapy of early breast cancer: 10-year results of the randomized boost versus no boost EORTC 22881-10882 trial. *J Clin Oncol* 25: 3259-3265.

196. Kim HJ, Han W, Yi OV, Shin HC, Ahn SK, et al. (2011) Young age is associated with ipsilateral breast tumor recurrence after breast conserving surgery and radiation therapy in patients with HER2-positive/ER-negative subtype. *Breast Cancer Res Treat* 130: 499-505.
197. Haybittle JL, Blamey RW, Elston CW, Johnson J, Doyle PJ, et al. (1982) A prognostic index in primary breast cancer. *Br J Cancer* 45: 361-366.
198. Blamey RW, Pinder SE, Ball GR, Ellis IO, Elston CW, et al. (2007) Reading the prognosis of the individual with breast cancer. *Eur J Cancer* 43: 1545-1547.
199. Ravdin PM, Siminoff LA, Davis GJ, Mercer MB, Hewlett J, et al. (2001) Computer program to assist in making decisions about adjuvant therapy for women with early breast cancer. *J Clin Oncol* 19: 980-991.
200. Olivotto IA, Bajdik CD, Ravdin PM, Speers CH, Coldman AJ, et al. (2005) Population-based validation of the prognostic model ADJUVANT! for early breast cancer. *J Clin Oncol* 23: 2716-2725.
201. Wishart GC, Azzato EM, Greenberg DC, Rashbass J, Kearins O, et al. (2010) PREDICT: a new UK prognostic model that predicts survival following surgery for invasive breast cancer. *Breast Cancer Res* 12: R1.
202. Wishart GC, Bajdik CD, Azzato EM, Dicks E, Greenberg DC, et al. (2011) A population-based validation of the prognostic model PREDICT for early breast cancer. *Eur J Surg Oncol* 37: 411-417.
203. Wishart GC, Rakha E, Green A, Ellis I, Ali HR, et al. (2014) Inclusion of KI67 significantly improves performance of the PREDICT prognostication and prediction model for early breast cancer. *BMC Cancer* 14: 908.
204. Engelhardt EG, Garvelink MM, de Haes JH, van der Hoeven JJ, Smets EM, et al. (2014) Predicting and communicating the risk of recurrence and death in women with early-stage breast cancer: a systematic review of risk prediction models. *J Clin Oncol* 32: 238-250.
205. Maishman T, Copson E, Stanton L, Gerty S, Dicks E, et al. (2015) An evaluation of the prognostic model PREDICT using the POSH cohort of women aged 40 years at breast cancer diagnosis. *Br J Cancer* 112: 983-991.
206. van 't Veer LJ, Dai H, van de Vijver MJ, He YD, Hart AA, et al. (2002) Gene expression profiling predicts clinical outcome of breast cancer. *Nature* 415: 530-536.
207. van de Vijver MJ, He YD, van't Veer LJ, Dai H, Hart AA, et al. (2002) A gene-expression signature as a predictor of survival in breast cancer. *N Engl J Med* 347: 1999-2009.
208. Knauer M, Mook S, Rutgers EJ, Bender RA, Hauptmann M, et al. (2010) The predictive value of the 70-gene signature for adjuvant chemotherapy in early breast cancer. *Breast Cancer Res Treat* 120: 655-661.
209. Paik S, Tang G, Shak S, Kim C, Baker J, et al. (2006) Gene expression and benefit of chemotherapy in women with node-negative, estrogen receptor-positive breast cancer. *J Clin Oncol* 24: 3726-3734.
210. Sotiriou C, Wirapati P, Loi S, Harris A, Fox S, et al. (2006) Gene expression profiling in breast cancer: understanding the molecular basis of histologic grade to improve prognosis. *J Natl Cancer Inst* 98: 262-272.
211. Parker JS, Mullins M, Cheang MC, Leung S, Voduc D, et al. (2009) Supervised risk predictor of breast cancer based on intrinsic subtypes. *J Clin Oncol* 27: 1160-1167.
212. Fredriksson I, Liljegren G, Palm-Sjovall M, Arnesson LG, Emdin SO, et al. (2003) Risk factors for local recurrence after breast-conserving surgery. *Br J Surg* 90: 1093-1102.

213. Elkhuizen PH, van de Vijver MJ, Hermans J, Zonderland HM, van de Velde CJ, et al. (1998) Local recurrence after breast-conserving therapy for invasive breast cancer: high incidence in young patients and association with poor survival. *Int J Radiat Oncol Biol Phys* 40: 859-867.
214. Vrieling C, Collette L, Fourquet A, Hoogenraad WJ, Horiot JC, et al. (2003) Can patient-, treatment- and pathology-related characteristics explain the high local recurrence rate following breast-conserving therapy in young patients? *Eur J Cancer* 39: 932-944.
215. Bollet MA, Sigal-Zafrani B, Mazeau V, Savignoni A, de la Rochefordiere A, et al. (2007) Age remains the first prognostic factor for loco-regional breast cancer recurrence in young (<40 years) women treated with breast conserving surgery first. *Radiother Oncol* 82: 272-280.
216. de Bock GH, van der Hage JA, Putter H, Bonnema J, Bartelink H, et al. (2006) Isolated loco-regional recurrence of breast cancer is more common in young patients and following breast conserving therapy: long-term results of European Organisation for Research and Treatment of Cancer studies. *Eur J Cancer* 42: 351-356.
217. Arriagada R, Le MG, Contesso G, Guinebretiere JM, Rochard F, et al. (2002) Predictive factors for local recurrence in 2006 patients with surgically resected small breast cancer. *Ann Oncol* 13: 1404-1413.
218. Cheng SH, Tsai SY, Yu BL, Horng CF, Chen CM, et al. (2013) Validating a prognostic scoring system for postmastectomy locoregional recurrence in breast cancer. *Int J Radiat Oncol Biol Phys* 85: 953-958.
219. Cil T, Fishell E, Hanna W, Sun P, Rawlinson E, et al. (2009) Mammographic density and the risk of breast cancer recurrence after breast-conserving surgery. *Cancer* 115: 5780-5787.
220. Arvold ND, Taghian AG, Niemierko A, Abi Raad RF, Sreedhara M, et al. (2011) Age, breast cancer subtype approximation, and local recurrence after breast-conserving therapy. *J Clin Oncol* 29: 3885-3891.
221. Cossetti RJ, Tyldesley SK, Speers CH, Zheng Y, Gelmon KA (2015) Comparison of breast cancer recurrence and outcome patterns between patients treated from 1986 to 1992 and from 2004 to 2008. *J Clin Oncol* 33: 65-73.
222. Azim HA, Jr., Nguyen B, Brohee S, Zoppoli G, Sotiriou C (2015) Genomic aberrations in young and elderly breast cancer patients. *BMC Med* 13: 266.
223. Kast K, Link T, Friedrich K, Petzold A, Niedostatek A, et al. (2015) Impact of breast cancer subtypes and patterns of metastasis on outcome. *Breast Cancer Res Treat* 150: 621-629.
224. Kennecke H, Yerushalmi R, Woods R, Cheang MC, Voduc D, et al. (2010) Metastatic behavior of breast cancer subtypes. *J Clin Oncol* 28: 3271-3277.
225. Gao X, Fisher SG, Emami B (2003) Risk of second primary cancer in the contralateral breast in women treated for early-stage breast cancer: a population-based study. *Int J Radiat Oncol Biol Phys* 56: 1038-1045.
226. Schaapveld M, Visser O, Louwman WJ, Willemse PH, de Vries EG, et al. (2008) The impact of adjuvant therapy on contralateral breast cancer risk and the prognostic significance of contralateral breast cancer: a population based study in the Netherlands. *Breast Cancer Res Treat* 110: 189-197.
227. Chowdhury M, Euhus D, Onega T, Biswas S, Choudhary PK (2017) A model for individualized risk prediction of contralateral breast cancer. *Breast Cancer Res Treat* 161: 153-160.
228. Hartman M, Czene K, Reilly M, Bergh J, Lagiou P, et al. (2005) Genetic implications of bilateral breast cancer: a population based cohort study. *Lancet Oncol* 6: 377-382.

229. Sackey H, Hui M, Czene K, Verkooijen H, Edgren G, et al. (2016) The impact of in situ breast cancer and family history on risk of subsequent breast cancer events and mortality - a population-based study from Sweden. *Breast Cancer Res* 18: 105.
230. Alkner S, Tang MH, Brueffer C, Dahlgren M, Chen Y, et al. (2015) Contralateral breast cancer can represent a metastatic spread of the first primary tumor: determination of clonal relationship between contralateral breast cancers using next-generation whole genome sequencing. *Breast Cancer Res* 17: 102.
231. Lostumbo L, Carbine NE, Wallace J (2010) Prophylactic mastectomy for the prevention of breast cancer. *Cochrane Database Syst Rev*: CD002748.
232. Waks AG, Partridge AH (2016) Fertility Preservation in Patients With Breast Cancer: Necessity, Methods, and Safety. *J Natl Compr Canc Netw* 14: 355-363.
233. Lambertini M, Del Mastro L, Pescio MC, Andersen CY, Azim HA, Jr., et al. (2016) Cancer and fertility preservation: international recommendations from an expert meeting. *BMC Med* 14: 1.
234. Del Mastro L, Boni L, Michelotti A, Gamucci T, Olmeo N, et al. (2011) Effect of the gonadotropin-releasing hormone analogue triptorelin on the occurrence of chemotherapy-induced early menopause in premenopausal women with breast cancer: a randomized trial. *JAMA* 306: 269-276.
235. Moore HC, Unger JM, Phillips KA, Boyle F, Hitre E, et al. (2015) Goserelin for ovarian protection during breast-cancer adjuvant chemotherapy. *N Engl J Med* 372: 923-932.
236. Swedish National Board of Health and Welfare (2015) Pregnancies, Deliveries and Newborn Infants. The Swedish Medical Birth Register 1973–2014 Assisted Reproduction, treatment 1991–2013. . Official Statistics of Sweden: Stockholm.
237. Johansson A (2016) Pregnancy and breast cancer: risk patterns, tumour characteristics and prognosis: Karolinska Institutet.
238. Amant F, von Minckwitz G, Han SN, Bontenbal M, Ring AE, et al. (2013) Prognosis of women with primary breast cancer diagnosed during pregnancy: results from an international collaborative study. *J Clin Oncol* 31: 2532-2539.
239. Loibl S, Schmidt A, Gentilini O, Kaufman B, Kuhl C, et al. (2015) Breast Cancer Diagnosed During Pregnancy: Adapting Recent Advances in Breast Cancer Care for Pregnant Patients. *JAMA Oncol* 1: 1145-1153.
240. Braems G, Denys H, De Wever O, Cocquyt V, Van den Broecke R (2011) Use of tamoxifen before and during pregnancy. *Oncologist* 16: 1547-1551.
241. Zagouri F, Sergentanis TN, Chrysikos D, Papadimitriou CA, Dimopoulos MA, et al. (2013) Trastuzumab administration during pregnancy: a systematic review and meta-analysis. *Breast Cancer Res Treat* 137: 349-357.
242. Peccatori FA, Azim HA, Jr., Orecchia R, Hoekstra HJ, Pavlidis N, et al. (2013) Cancer, pregnancy and fertility: ESMO Clinical Practice Guidelines for diagnosis, treatment and follow-up. *Ann Oncol* 24 Suppl 6: vi160-170.
243. Azim HA, Jr., Santoro L, Pavlidis N, Gelber S, Kroman N, et al. (2011) Safety of pregnancy following breast cancer diagnosis: a meta-analysis of 14 studies. *Eur J Cancer* 47: 74-83.
244. Luo M, Zeng J, Li F, He L, Li T (2014) Safety of pregnancy after surgical treatment for breast cancer: a meta-analysis. *Int J Gynecol Cancer* 24: 1366-1372.
245. International Breast Cancer Study Group Pregnancy Outcome and Safety of Interrupting Therapy for Women With Endocrine Responsive Breast Cancer (POSITIVE) [cited August 17,

2015] [Accessed November 12, 2015]. Available from:
<https://clinicaltrials.gov/ct2/show/NCT02308085?term=02308085&rank=1>. NLM identifier:
NCT02308085,.

246. Avis NE, Crawford S, Manuel J (2005) Quality of life among younger women with breast cancer. *J Clin Oncol* 23: 3322-3330.
247. Champion VL, Wagner LI, Monahan PO, Daggy J, Smith L, et al. (2014) Comparison of younger and older breast cancer survivors and age-matched controls on specific and overall quality of life domains. *Cancer* 120: 2237-2246.
248. Li J, Humphreys K, Eriksson M, Dar H, Brandberg Y, et al. (2016) Worse quality of life in young and recently diagnosed breast cancer survivors compared with female survivors of other cancers: A cross-sectional study. *Int J Cancer* 139: 2415-2425.
249. Ludvigsson JF, Otterblad-Olausson P, Pettersson BU, Ekblom A (2009) The Swedish personal identity number: possibilities and pitfalls in healthcare and medical research. *Eur J Epidemiol* 24: 659-667.
250. Barlow L, Westergren K, Holmberg L, Talback M (2008) The completeness of the Swedish Cancer Register - a sample survey for year 1998. *Acta Oncol*: 1-7.
251. Mattsson B, Wallgren A (1984) Completeness of the Swedish Cancer Register. Non-notified cancer cases recorded on death certificates in 1978. *Acta Radiol Oncol* 23: 305-313.
252. The Swedish Tax Agency (Skatteverket) (2017) Information regarding The Total Population Registry.
253. Sobin LH WC (2002) TNM Classification of Malignant Tumours. New York: Wiley-Liss.
254. Swedish Government Ministry of Justice (2006) Personal Data Protection; Information on the Personal Data Act.
255. Swedish Government Ministry of Health and Social Affairs (2002) Law on Biobanks in Health and Welfare (2002:297).
256. Kampf C, Olsson I, Ryberg U, Sjostedt E, Ponten F (2012) Production of tissue microarrays, immunohistochemistry staining and digitalization within the human protein atlas. *J Vis Exp*.
257. Uhlen M, Fagerberg L, Hallstrom BM, Lindskog C, Oksvold P, et al. (2015) Proteomics. Tissue-based map of the human proteome. *Science* 347: 1260419.
258. Liu S, Chia SK, Mehl E, Leung S, Rajput A, et al. (2010) Progesterone receptor is a significant factor associated with clinical outcomes and effect of adjuvant tamoxifen therapy in breast cancer patients. *Breast Cancer Res Treat* 119: 53-61.
259. Wolff AC, Hammond ME, Schwartz JN, Hagerty KL, Allred DC, et al. (2007) American Society of Clinical Oncology/College of American Pathologists guideline recommendations for human epidermal growth factor receptor 2 testing in breast cancer. *J Clin Oncol* 25: 118-145.
260. Martin-Castillo B, Lopez-Bonet E, Buxo M, Dorca J, Tuca-Rodriguez F, et al. (2015) Cytokeratin 5/6 fingerprinting in HER2-positive tumors identifies a poor prognosis and trastuzumab-resistant basal-HER2 subtype of breast cancer. *Oncotarget* 6: 7104-7122.
261. Goldhirsch A, Winer EP, Coates AS, Gelber RD, Piccart-Gebhart M, et al. (2013) Personalizing the treatment of women with early breast cancer: highlights of the St Gallen International Expert Consensus on the Primary Therapy of Early Breast Cancer 2013. *Ann Oncol* 24: 2206-2223.
262. Ederer F, Axtell LM, Cutler SJ (1961) The relative survival rate: a statistical methodology. *Natl Cancer Inst Monogr* 6: 101-121.

263. Dickman PW, Sloggett A, Hills M, Hakulinen T (2004) Regression models for relative survival. *Stat Med* 23: 51-64.
264. Kaplan EL, Meier P (1958) Nonparametric estimation from incomplete observations. *J Am Stat Assoc* 53: 457-481.
265. Mantel N (1966) Evaluation of survival data and two new rank order statistics arising in its consideration. *Cancer Chemother Rep* 50: 163-170.
266. Fagan TJ (1975) Letter: Nomogram for Bayes theorem. *N Engl J Med* 293: 257.
267. Diagnostic test calculator (2016) (version 2010042101). <https://arawmeduicedu/cgi-bin/testcalcpl>
268. Lewis D, Rienhoff WF (1932) Results of Operations at the Johns Hopkins Hospital for Cancer of the Breast: Performed at the Johns Hopkins Hospital from 1889 to 1931. *Ann Surg* 95: 336-400.
269. Adami HO, Malke B, Meirik O, Persson I, Bergkvist L, et al. (1985) Age as a prognostic factor in breast cancer. *Cancer* 56: 898-902.
270. Eaker S, Dickman PW, Bergkvist L, Holmberg L (2006) Differences in management of older women influence breast cancer survival: results from a population-based database in Sweden. *PLoS Med* 3: e25.
271. Textor J, Hardt J, Knuppel S (2011) DAGitty: a graphical tool for analyzing causal diagrams. *Epidemiology* 22: 745.
272. Henriksen KL, Rasmussen BB, Lykkesfeldt AE, Moller S, Ejlersen B, et al. (2007) Semi-quantitative scoring of potentially predictive markers for endocrine treatment of breast cancer: a comparison between whole sections and tissue microarrays. *J Clin Pathol* 60: 397-404.
273. Knutsvik G, Stefansson IM, Aziz S, Arnes J, Eide J, et al. (2014) Evaluation of Ki67 expression across distinct categories of breast cancer specimens: a population-based study of matched surgical specimens, core needle biopsies and tissue microarrays. *PLoS One* 9: e112121.
274. Focke CM, van Diest PJ, Decker T (2016) St Gallen 2015 subtyping of luminal breast cancers: impact of different Ki67-based proliferation assessment methods. *Breast Cancer Res Treat* 159: 257-263.
275. Tchrakian N, Flanagan L, Harford J, Gannon JM, Quinn CM (2016) New ASCO/CAP guideline recommendations for HER2 testing increase the proportion of reflex in situ hybridization tests and of HER2 positive breast cancers. *Virchows Arch* 468: 207-211.
276. Long TH, Lawce H, Durum C, Moore SR, Olson SB, et al. (2015) The New Equivocal: Changes to HER2 FISH Results When Applying the 2013 ASCO/CAP Guidelines. *Am J Clin Pathol* 144: 253-262.
277. Yaziji H, Goldstein LC, Barry TS, Werling R, Hwang H, et al. (2004) HER-2 testing in breast cancer using parallel tissue-based methods. *JAMA* 291: 1972-1977.
278. Dybdal N, Leiberman G, Anderson S, McCune B, Bajamonde A, et al. (2005) Determination of HER2 gene amplification by fluorescence in situ hybridization and concordance with the clinical trials immunohistochemical assay in women with metastatic breast cancer evaluated for treatment with trastuzumab. *Breast Cancer Res Treat* 93: 3-11.
279. Lee HJ, Kim JY, Park SY, Park IA, Song IH, et al. (2015) Clinicopathologic Significance of the Intratumoral Heterogeneity of HER2 Gene Amplification in HER2-Positive Breast Cancer Patients Treated With Adjuvant Trastuzumab. *Am J Clin Pathol* 144: 570-578.

280. Kanumuri P, Hayse B, Killelea BK, Chagpar AB, Horowitz NR, et al. (2015) Characteristics of Multifocal and Multicentric Breast Cancers. *Ann Surg Oncol* 22: 2475-2482.
281. Pekar G, Hofmeyer S, Tabar L, Tarjan M, Chen TH, et al. (2013) Multifocal breast cancer documented in large-format histology sections: long-term follow-up results by molecular phenotypes. *Cancer* 119: 1132-1139.
282. Bethune GC, Mullen JB, Chang MC (2013) HER2 testing of multifocal invasive breast carcinoma: how many blocks are enough? *Am J Clin Pathol* 140: 588-592.
283. Chung A, Choi M, Han BC, Bose S, Zhang X, et al. (2015) Basal Protein Expression Is Associated With Worse Outcome and Trastuzumab Resistance in HER2+ Invasive Breast Cancer. *Clin Breast Cancer* 15: 448-457 e442.
284. Bagaria SP, Ray PS, Wang J, Kropcho L, Chung A, et al. (2012) Prognostic value of basal phenotype in HER2-overexpressing breast cancer. *Ann Surg Oncol* 19: 935-940.