

Department of Medicine, Division of Hematology
Karolinska University Hospital Solna and
Karolinska Institutet, Stockholm, Sweden

CHRONIC MYELOID LEUKEMIA

**CLINICAL, EXPERIMENTAL
AND HEALTH ECONOMIC STUDIES,
WITH SPECIAL REFERENCE TO IMATINIB TREATMENT**

Lotta Ohm



**Karolinska
Institutet**

Stockholm 2013

All previously published papers were reproduced with permission from the publisher.
The cover image by Paulo Henrique Orlandi Mourao. Wikimedia Commons 2009.
Published by Karolinska Institutet. Printed by Repro print AB.

© Lotta Ohm, 2013
ISBN 978-91-7549-006-9

*To my family and
in memory of my parents*

ABSTRACT

CML is a malignant disease that originates in the bone marrow stem cell, carrying the Philadelphia chromosome with the BCR-ABL fusion gene. This gene translates into an active tyrosine kinase, Bcr-Abl, affecting hematopoiesis, particularly resulting in increased numbers of white blood cells in the peripheral blood. Left untreated, CML progresses from a silent chronic phase (CP) to a life-threatening blastic phase (BP). After the millennium shift imatinib was introduced for the treatment of CML. Specifically targeting the Bcr-Abl oncoprotein, it was the first tyrosine kinase inhibitor (TKI) employed in cancer. It induced spectacular responses among CML-CP patients, strikingly reducing the risk of disease progression, combined with excellent tolerability. In this thesis we have studied various aspects of imatinib treatment in CML.

In a cohort of 45 newly diagnosed CML-CP patients initiated on imatinib, we consecutively assessed treatment responses by FISH, PCR and chromosome banding analysis (CBA). In a landmark analysis, an early favourable response, defined as less than 10% BCR-ABL-positive cells by FISH after 3 months of treatment, was identified as a predictive marker of an improved long-term clinical outcome. Among evaluable patients 51% achieved this response. A large majority, 95% of such responders, reached complete cytogenetic response within 12 months and 100% an event-free survival at 48 months.

We assessed the effect of imatinib treatment on neutrophil leukotriene (LT) signaling to evaluate its possible role as a clinical biomarker predictive of treatment response. Increased LT signaling has previously been suggested as a driver of leukocytosis in CML. The activity and expression of LTC₄S, catalyzing formation of LTC₄ from LTA₄, were determined in neutrophils from 11 CML-CP patients during their initial phase of imatinib treatment, and the results related to the parallel development of BCR-ABL-expression. CD16+ neutrophils were isolated, their LTC₄S activity measured and LTC₄S expression determined at the protein and mRNA levels. In parallel, BCR-ABL expression was assessed by bone marrow CBA and by FISH on peripheral blood cells, including a combined May Grönwald Giemsa staining and FISH technique (MGG-FISH) to score neutrophilic cells. An aberrant expression of LTC₄S in CML neutrophils was typically found, but it was rapidly normalized after initiation of imatinib treatment, later paralleled by a decreasing expression of BCR-ABL. The findings indicate that increased expression and activity of LTC₄S in CML is a down-stream step of BCR-ABL activity, i.e. the Bcr-Abl protein directly or indirectly causes an upregulation of LTC₄S. It is possible that an early evaluation of LTC₄S expression during imatinib treatment could serve as a more rapid way of assessing treatment response than the current methods identifying BCR-ABL expression through CBA, FISH or qRT-PCR.

We also defined real life outcome of patients with CML in Sweden during four decades and related the relative survival (RS) patterns to imatinib treatment and other management strategies. We assessed trends in survival and short-and long-term excess mortality among all patients (n=3,173) regardless of clinical trial enrollment. Patients were categorized into five age groups (<50, 50-59, 60-69, 70-79 and >79 years) and five calendar periods (1973-1979, 1980-1986, 1987-1993, 1994-2000 and 2001-2008). We found that throughout all calendar periods, age was a strong predictor of survival, with superior survival for the youngest patients. In analyses including age and period of diagnosis, RS improved with calendar period in all age groups, but most markedly in patients younger than 79 years of age, particularly those 70-79 years of age. Survival among all age groups was greatest in the last calendar period, mainly as a result of an increasing use of imatinib. However, elderly patients still do poorly. The Swedish CML registry data show that patients diagnosed 2002-2008, at the age of 70-79 years received TKI in 66% and patients >80 years in only 18% of the cases.

Finally, we compared the costs during the last decades with earlier decades treatment regimens and related the costs to the expected improved survival. Using Swedish real world national data from CML patients diagnosed in the country from 1973 to 2008 (n=1,778), we evaluated the incremental cost-effectiveness ratio (ICER) between three periods associated with broad implementation of imatinib (III), interferon- α and allogeneic stem cell transplantation (II), and symptomatic treatment (I), respectively. We observed substantial health gains over time, paralleled by increased treatment costs. The mean survival was 2.9, 9.2 and 18.5 years during periods I-III, respectively. The resulting ICER was £45 700 per QALY gained comparing periods III and II using a societal perspective. In a separate analysis by groups of age at diagnosis showed lower ICERs for individuals <50 years at diagnosis: £38 500 for the societal perspective. Since the prevalence of CML patients is increasing and assuming that 75% of each incident cohort was to receive imatinib at current prices, the imatinib budget would need to double by 2050. A future potential discontinuation of imatinib for selected excellent responders would reduce the ICER per QALY gained. Reduced drug cost of imatinib linked to the patent expiry of the drug will probably have a greater impact on ICER per QALY. An estimated price reduction of 80% (global competition) or 30% (expected change for biological drugs) would be associated with an ICER of £20 000 and £36 000, respectively, per QALY gained.

LIST OF PUBLICATIONS

This thesis is based on the following papers, which are referred to in text by their Roman numerals:

- I **Ohm L**, Arvidsson I, Barbany G, Hast R, Stenke L.
Early landmark analysis of imatinib treatment in CML chronic phase: less than 10% BCR-ABL by FISH at 3 months associated with improved long-term clinical outcome. Am J Hematol. 2012 Aug;87Aug; 87(8):760-5.
- II Roos C, Stenke L, **Ohm L**, Widell S, Kumlin M, Lindgren JA, Tornhamre S. Clinical imatinib mesylate treatment induces early normalisation of aberrant neutrophil leukotriene C4 synthase expression and activity in chronic myeloid leukaemia. Br J Haematol. 2008 Sep;142(6):992-5.
- III Björkholm M, **Ohm L**, Eloranta S, Derolf A, Hultcrantz M, Sjöberg J, Andersson T, Höglund M, Richter J, Landgren O, Kristinsson SY, Dickman PW. Success story of targeted therapy in chronic myeloid leukemia: a population-based study of patients diagnosed in Sweden from 1973 to 2008. J Clin Oncol. 2011 Jun 20;29(18):2514-20.
- IV **Ohm L**, Lundqvist A, Dickman P W, Höglund M, Persson U, Stenke L, Steen Carlsson K, Björkholm M. Real world cost-effectiveness in chronic myeloid leukemia, from non targeted treatment to imatinib-the current and future price of success. Submitted for publication.

TABLE OF CONTENTS

1 Introduction to chronic myeloid leukemia (CML)	9
1.1 Background	9
1.2 CML – clinical aspects	11
1.2.1 Definition, diagnostic criteria, methods and predictors of prognosis	11
1.2.2 Epidemiology	14
1.2.3 Etiology	14
1.2.4 Pathophysiology	15
1.2.5 Clinical signs and symptoms	16
1.2.6 Treatment	17
1.3 Swedish population registries	22
2 Aims	23
3 Study of prognostic factors-landmark analysis (I)	24
3.1 Methodological aspects	24
3.1.1 Cytogenetic Banding Analysis (CBA)	24
3.1.2 Fluorescence In Situ Hybridization (FISH)	24
3.1.3 Quantitative reverse-transcriptase Polymerase Chain reaction <u>qRT-PCR</u>	26
3.1.4 Statistical methods	26
3.2 Results and discussion	26
4 Study of prognostic factors - Leukotriene signaling (II)	29
4.1 Background	29
4.2 Patients and methods	30
4.2.1 Statistical methods	31
4.3 Results and discussion	31
5 Population-based studies of survival in CML (III)	33
5.1 Patients and methods	33
5.1.1 Statistical methods	33
5.2 Results and discussion	34
6 Health economic aspects of CML treatment (IV)	36
6.1 Patients and methods	36
6.1.1 Statistical methods	36
6.2 Results and discussion	37
7 Summary and conclusions	39
8 Acknowledgements	41
9 References	42

LIST OF ABBREVIATIONS

5-LO	Five-lipoxygenase
ABL	Abelson 1(gene)
ALL	Acute lymphoblastic leukemia
AML	Acute myeloid leukemia
AP	Accelerated phase
ASCT	Autologous stem cell transplantation
ATP	Adenosine-5'-triphosphate
BCR	Breakpoint cluster region (gene)
BCR-ABL	Breakpoint cluster region-Abelson fusion (gene)
Bcr-Abl	Breakpoint cluster region-Abelson fusion (protein)
BP	Blastic phase (or blastic crisis)
CBA	Chromosome banding analysis
CCA	Clonal chromosomal abnormalities
CCyR, CCgR	Complete cytogenetic response
CgR	Cytogenetic response
CHR	Complete hematologic response
CML-CP	Chronic myeloid leukemia chronic phase
CMR	Complete molecular response
CP	Chronic phase
CysLT	Cysteinyl Leukotriene
D-FISH	Dual fusion-FISH
DNA	Deoxyribonucleic acid
EFS	Event-free survival
ELN	European Leukemia Net
ES-FISH	Extra signal-FISH
FISH	Fluorescence in situ hybridization
HLA	Human leukocyte antigen
HR	High risk
HU	Hydroxyurea
IFN	Interferon-alpha
IR	Intermediate risk
LO	Lipoxygenase
LR	Low risk
LT	Leukotriene
LTA ₄	Leukotriene A ₄ ; 5(S) - <i>trans</i> -5,6-oxido-11,14- <i>cis</i> -eicosatetraenoic acid
LTB ₄	Leukotriene B ₄ ; 5(S), 12(R)-dihydroxy-6,14- <i>cis</i> -8,10- <i>trans</i> -eicosatetraenoic acid
LTC ₄	Leukotriene C ₄ ; 5(S)-hydroxy-6(R)-S-glutathionyl-7,9- <i>trans</i> -11,14- <i>cis</i> - eicosatetraenoic acid
LTC ₄ S	Leukotriene C ₄ synthase
LTD ₄	Leukotriene D ₄ ; 5(S)-hydroxy-6(R)-S-cysteinylglycyl-7,9- <i>trans</i> -11,14- <i>cis</i> - eicosatetraenoic acid
LTE ₄	Leukotriene E ₄ ; 5(S)-hydroxy-6(R)-S-cysteinyl-7,9- <i>trans</i> -11,14- <i>cis</i> -eicosatetraenoic acid

M-BCR	Major breakpoint cluster region
m-BCR	Minor breakpoint cluster region
MMR	Major molecular response
μ-BCR	Micro breakpoint cluster
MRD	Minimal residual disease
m-RNA	Messenger-RNA
OS	Overall survival
Ph	Philadelphia
RNA	Ribonucleic acid
RT-PCR	Reverse-transcription polymerase chain reaction
q-RT-PCR	(quantitative) Real time reverse-transcription polymerase chain reaction
RS	Relative survival
RSR	Relative survival ratio
SCT	Stem cell transplantation
TKI	Tyrosine kinase inhibitor
WBC	White blood cell
WHO	World Health Organization

1 INTRODUCTION TO CHRONIC MYELOID LEUKEMIA (CML)

1.1 BACKGROUND

The term leukemia was coined by Virchow in 1845 as he recognized several cases of splenomegaly, anemia and massive granulocytosis and understood the neoplastic nature in patients with "purulent" blood.^{1,2} The disease origin from the bone marrow was clarified by Neumann some years later.³ Nowell's and Hungerford's discovery of the Philadelphia chromosome in 1960 was a breakthrough in cancer biology and CML. For the first time it was demonstrated that a chromosome change was associated with a specific type of leukemia.⁴ In 1973 Rowley found that the Philadelphia chromosome (Ph) was a result of a reciprocal chromosomal translocation between the long arms of chromosomes 9 and 22.⁵ It took another 10 years before it was revealed that the proto-oncogene ABL on chromosome 9 and the previously unidentified BCR gene on chromosome 22 was involved and that the deregulated Abl tyrosine kinase was the pathogenic factor.^{6,7,8} In 1990 Daley et al reported the first evidence of ability of BCR-ABL to transform primary myeloid cells and induce a CML-like disease in mice, which finally confirmed that the BCR-ABL and the constitutively active Bcr-Abl tyrosine kinase was the underlying pathogenic factor in CML.⁹

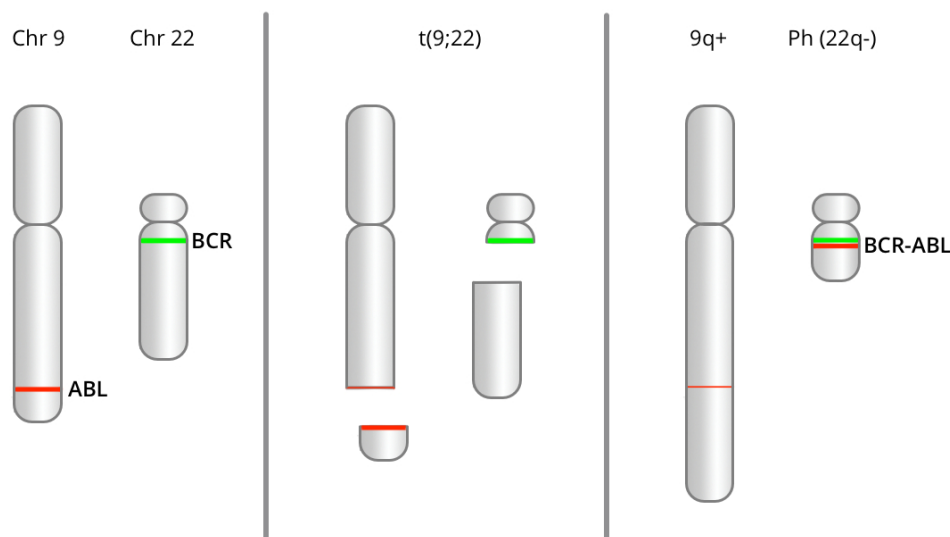


Figure 1. The normal Chromosomes 9 and 22, the translocation, and the two derivate chromosomes 9q+ and 22q- (Ph).

Prior to the 1950s, splenic irradiation was the mainstay of CML therapy. The treatment had no or minimal effect on survival. In the mid 1950s busulphan became the prevailing palliative

treatment of CML, reducing the leukocytosis and splenomegaly. Busulphan was some decades later replaced by hydroxyurea (HU) as the treatment of choice, due to less toxicity of the latter. Neither drugs affected cytogenetic response or progression to BP resulting in a median survival of 3.2 years in the 1970s.¹⁰ Until the 1980s, CML was regarded as incurable and inexorably fatal.

In the 1980s it became clear that allogeneic stem cell transplantation (SCT), despite a relatively high transplantation-related mortality especially in the early years, could induce long-term Philadelphia chromosome negativity. It became the treatment of choice for eligible younger patients with access to a donor since it offered a chance of cure. Efforts to extend SCT to all patients with CML failed, due to lack of suitable donors and the increased incidence of lethal graft-versus-host disease (GVHD).¹¹ The standard therapy for the majority of patients in CML chronic phase (CML-CP) in the mid 1980s was recombinant interferon- α (IFN). All studies that reported IFN as first line treatment, tested the drug in combination with other agents mostly hydroxyurea, low dose cytarabin or both. IFN prolonged life of patients in all ages, but lower doses were used in elderly patients. IFN showed promising results in different studies with 10-year overall survival (OS) of 25-53%^{12 13} and a median survival of 5-7.5years.¹⁴ However, IFN therapy was associated with side effects, including fever, chills, muscle pain, asthenia, fatigue, that lead to considerably reduced quality of life and problems to maintain the required high doses of IFN.

In 1984 the Swedish CML Study Group was formed, and presented national recommendations for the management of patients with CML the same year. Between 1984 and 1989 the Swedish CML Study Group randomly allocated patients to treatment with either HU or busulphan. Approximately 35% of all patients with newly diagnosed CML (n=179) were included.¹⁵ No difference in overall or blast crisis-free survival was observed. Patients who underwent allogeneic SCT fared significantly better with a median survival of 4.7 years in comparison with 3.3 years in patients who did not. As a consequence of the study, younger patients were offered SCT. In patients younger than 55 years of age without a donor, the Swedish CML Study Group during the 1990s explored combined treatment with HU and IFN followed by one to three courses of intensive chemotherapy. Patients who achieved significant Ph reduction and negativity underwent high-dose chemotherapy and autologous SCT to further minimize the Ph-positive clone.¹⁶ During the same period (1989 to 1997), the Swedish CML Study Group used an intensive chemotherapy protocol in patients in accelerated phase (AP) and blastic phase (BP) in an attempt to restore CP, including allogeneic or double autologous (i.e., cells harvested in early chronic phase) SCT. The 1-year survival was 70% for allo-geneic SCT/Autologous-SCT(ASCT) patients (median survival 21 months), 50% in responding patients overall, but only 7% in non-responders.¹⁷

1.2 CML – CLINICAL ASPECTS

1.2.1 Definition, diagnostic criteria, methods and predictors of prognosis.

CML is a myeloproliferative disease that originates in an abnormal pluripotent bone marrow stem cell carrying the Philadelphia (Ph) chromosome and/or the BCR-ABL fusion gene. It is found in all myeloid cell lineages, but also in some lymphoid cells,¹⁸ although the myelopoiesis is dominating. At diagnosis parallel to the malignant clone there is a suppressed normal hematopoiesis.^{19,20}

The diagnosis of CML should be suspected based on abnormal blood counts (leukocytosis, thrombocytosis), the presence of an enlarged spleen and/or general symptoms such as fatigue, weight loss, sweating and is formally diagnosed by

1) Typical morphological assessment of blood or bone marrow smears

AND

2) Detection of the BCR-ABL fusion gene in cells from blood or bone marrow.

Morphology

The peripheral blood shows increased white blood cell (WBC) counts, due mainly to segmented neutrophils and neutrophils in different stages of maturation such as myelocytes, metamyelocytes. Basophilia is invariably present and many patients may have eosinophilia as well. A low number of myeloblasts are often seen. The platelet count is normal or increased and may exceed $1000 \times 10^9/l$. Thrombocytopenia in chronic phase is rare. Most patients have a mild anemia.

The bone marrow shows hypercellularity due to increased numbers of neutrophils and their precursors. In chronic phase the blasts are usually fewer than 5%, while 10-19% indicates transformation to an accelerated and $\geq 20\%$ to a blastic phase.²¹ The megakaryocytes are characteristically small and have hypolobated nuclei.²² Forty per cent of the patients display an increase of reticulin fibers that generally correlates with increased numbers of megakaryocytes, enlarged spleen and more severe degree of anemia.

Detection of BCR-ABL fusion gene

The presence of BCR-ABL can be detected by three different methods;

1) **Chromosome metaphase analysis** (*chromosome level*) shows an elongated chromosome 9 and a truncated chromosome 22, i.e. the Philadelphia chromosome. Karyotyping ("G-banding" or "conventional cytogenetics") is a screening analysis where all chromosomes are evaluated in metaphases. Normally 20-30 metaphases are analyzed. Since relatively few metaphases are studied the sensitivity is rather low. An advantage of this technique is that additional aberrations than Ph chromosome can be identified since the whole genome is analyzed. However, cryptic fusions between the BCR and ABL genes can not be detected by karyotyping.

Karyotyping is used to measure the response to therapy. The cytogenetic response is associated with prognostic significance, why this method is used until a complete cytogenetic response (CCyR)= 0% Ph chromosomes, has been achieved.

2) **FISH** (Fluorescence In Situ Hybridization) (*DNA level*) is a targeted analysis, showing the gene fusion BCR-ABL. In addition to the typical fusion gene, it is possible to detect cryptic fusions. FISH allows the assessment of a larger number of non-dividing (interphase) cells, both from peripheral blood^{23,24 25 26} and bone marrow and is thus more sensitive than chromosome banding analysis (CBA). The method can also be performed on cultured metaphase cells, hyper-metaphase FISH.^{27 28}

Probes targeting the ABL and BCR genes are used and nucleated cells are then examined in an epifluorescence microscope. The fusion gene will appear yellow. In interphase FISH it is recommended that at least 200 cells should be analyzed. The sensitivity for FISH is higher than for karyotyping, less than 1 Ph-positive cell per 100 nucleated cells can be detected. The method has so far not been used to give prognostic information similar to the degree of cytogenetic responses using CBA (i.e. complete cytogenetic response, major cytogenetic response etc.)²⁹

3) **PCR** (Polymerase Chain Reaction) (*mRNA level*) can be performed on bone marrow and blood, usually on blood. *Qualitative* (RT-PCR) reveals the presence or absence of BCR-ABL mRNA. *Quantitative* (qRT-PCR), reveals the amount of mRNA. The method is highly sensitive and can detect 1 out of 10⁵ transcripts of mRNA. Q-RT-PCR is the only method that can measure minimal residual disease (MRD), after the patient reaches normal findings by karyotyping (CCgR) or FISH.³⁰⁻³² The results of qRT-PCR are expressed as the ratio BCR-ABL/reference gene (ABL and/or GUS) as a percentage. A problem with the PCR technique is that the methods and results vary between laboratories. An international scale (IS) has been established to make results from different laboratories comparable, by giving each laboratory a conversion factor related to a reference laboratory. All over the world laboratories undergo a standardization work, in order to express their results according to the IS.^{31 33}

Clinical course

The natural course of the CML disease is generally divided into three stages/phases. The disease can present in any phase but most patients (90%) present in the chronic phase, during which mature granulocytes are still produced but with an increased numbers of myeloid progenitors in the peripheral blood. This early phase is often asymptomatic. In the absence of effective treatment, the disease progresses eventually into the more aggressive phases, AP and BP.¹¹ In the pre-TKI era the average duration of the chronic phase was approximately 3-5 years.^{34,35} The following shorter AP is a poorly defined phase characterized by an increasing number of myeloblasts and basophils in peripheral blood and bone marrow, persistent thrombocytosis, and increasing spleen size unresponsive to therapy. In some cases there are evidence of clonal evolution. The most common cytogenetic events in the clonal evolution are the appearance of +8, +Ph, and i(17q) that denotes the activation of other oncogenes than BCR-ABL or a deletion of tumour suppressor genes.^{11 36} There are several definitions for the AP including the definitions by European Leukemia Net (ELN),³⁷ World Health Organization

(WHO)²¹ and the American National Comprehensive Cancer Network (NCCN).³⁸ In Sweden, the WHO classification from 2008 is the most widely used. The AP is a transition to the final blastic phase. Here the percentage of blast cell in the bone marrow or peripheral blood is increased to $\geq 20\%$, and the blasts can either be of lymphoid or myeloid origin.³⁹⁻⁴² Myeloid BP is the most common BP 50%, lymphoid 25% and undifferentiated BP in 25%.⁴³ Occasional patients have a combined myeloid/lymphoid CML-BP.⁴⁴ In the CML-BP there is a clear maturation stop in the myelopoiesis and the clinical features are more like an acute leukemia. Isolated extramedullary proliferation of blasts that can be seen in the skin, lymph nodes, spleen, bone or in the central nervous system constitutes a CML-BP, independent of the picture in the peripheral blood and the bone marrow.

CML-AP may be made when one or more of the following are present:
Blasts 10-19% of WBC in peripheral blood and/or of nucleated bone marrow cells
Peripheral blood basophils $\geq 20\%$
Persistent thrombocytopenia ($< 100 \times 10^9/l$) unrelated to therapy or persistent
Thrombocytosis ($> 1000 \times 10^9/l$) unresponsive to therapy
Increasing spleen size and increasing WBC count unresponsive to therapy
Cytogenetic evidence of clonal evolution
CML-BP may be made if one or more is present:
Blasts $\geq 20\%$ of WBC in peripheral blood and/or of nucleated bone marrow cells
Extramedullary blast proliferation
Large foci or clusters of blasts in the bone marrow biopsy

Table 1 .WHO definition of accelerated phase.

Prediction of prognosis

At diagnosis the most important clinical prognostic factor for survival is to define whether the patient is in the chronic, accelerated or blastic phase.²¹ In chronic phase the risk of progression to a more advanced phase can be calculated by the Sokal and Hasford scores, respectively. The two scores are calculated in a slightly different way, based on age of the patient, spleen size and blood counts. Depending on the results the patients will be designated into one of three risk groups; low, intermediate or high.

The Sokal score uses age at diagnosis, spleen size, platelet count and percentage of blasts in blood. It predicts survival of newly diagnosed CML patients treated with hydroxyurea.⁴⁵ Data now indicate that Sokal score also predicts the chance of achieving CCgR and risk of progression to AP/BP in patients treated with imatinib.^{32,46}

The Hasford (Euro) score, is a further development of the Sokal score, predicts survival of newly diagnosed CML patients with IFN treatment.⁴⁷ It is based on data from 1303 patients treated within twelve different studies. It is possible, but not yet clearly demonstrated, that Hasford score can also be applied to patient groups treated with imatinib. Hasford score is calculated based on age, spleen size, platelet count and percentage of blasts, eosinophils and basophils in peripheral blood at diagnosis.

The *EUTOS* score is a novel, not yet widely spread score. It is calculated from the percentage of basophils and spleen size and predicts outcome of imatinib therapy.⁴⁸ The score may be used to identify CML patients with significantly lower probabilities of responding to therapy and survival.

The risk scoring systems may have lost some of its impact, since the most important individual prognostic factor today is the degree and timing of the hematologic, cytogenetic and molecular responses.^{37 49}

1.2.2 Epidemiology

CML is a rare disease that has a reported world-wide incidence of 1.0-1.5 cases per 100 000 population per year.^{50 51} The incidence in Sweden during the last 8 year period was 0.8-1.0 per 100 000,⁵² which means that about 90 patients are diagnosed with CML in Sweden annually. CML is diagnosed in all ages, but the incidence increases with age. The median age at diagnosis in Sweden is approximately 60 years. Males are slightly more affected than females (1.3:1).^{51,53} Due to more effective treatment in the last decade, prevalence increases in all Western countries.⁵⁴ No geographical or ethnical differences exist regarding the incidence, but the prevalence differs, likely due to differences in management strategies between countries, depending of availability of expensive drugs, modern diagnostic technologies and health-care system.⁵⁵

1.2.3 Etiology

Exposure to benzene and ionizing radiation constitute risk factors. Studies have shown that BCR-ABL transcripts can be induced in hematopoietic stem cells by ionizing radiation in vitro.⁵⁶ A sharp increase of the incidence of CML was seen after the atomic bomb in Hiroshima 1945^{57,58,59}. No similar increase in CML incidence has been seen in connection with the Chernobyl accident in the Soviet Union in 1986, where the radiation doses were significantly lower compared to Hiroshima-Nagasaki.⁶⁰

An explanation for the spontaneous appearance of the fusion gene BCR-ABL may be the short physical distance between BCR and ABL genes in human lymphocytes⁶¹ and CD34 + cells that could predispose to translocation between the genes.^{62,63} The mere presence of the BCR-ABL translocation in a hematopoietic cell is not enough alone to cause CML. It is known that the BCR-ABL fusion transcripts of M-BCR and m-BCR type are detected in low frequency among 30% of healthy individuals.^{64 65} It is unclear why CML occurs in only a minority of these individuals. In healthy subjects the translocation possibly occurs in the terminal portion of maturation and is eliminated by the normal immune system. Indirect evidence for the immune system effects is that certain HLA types (HLA-B8 HLA-A3) appear to protect against CML.⁶⁶ It is also likely that the chromosomal change must occur in a sufficiently primitive hematopoietic progenitor cell, in order for the clone to expand. Another possibility is that BCR-ABL is not the only genetic lesion to induce CML-CP.⁶⁷ However, in the vast majority of patients the etiology of the disease is still unknown and there does not appear to be a hereditary fact

1.2.4 Patophysiology

Blood cells develop from a multipotent hematopoietic stem cell located in the bone marrow.⁶⁸ Normally the maturation from the stem cell into functional blood cells is very well regulated. In CML a reciprocal translocation of genes between the long arms of chromosome 9 and 22 has occurred in a stem cell.^{5,11} A part of the Abelson 1 gene (ABL1, hereafter called ABL) on chromosome 9 is translocated and forms a fusion gene with a part of the breakpoint cluster region gene (BCR), located on chromosome 22. The shorter derivative chromosome 22 carrying the BCR-ABL fusion gene, is now called the Ph chromosome t(9;22)(q34;q11).^{11,69}

The normal ABL proto-oncogene encodes a cytoplasmic and nuclear protein tyrosine kinase that has been implicated in processes of cell differentiation, cell division, cell adhesion, and stress response.^{67,70,71} The activity of the ABL gene is negatively regulated by its SH3 domain,^{67,72} and deletion of the SH3 domain turns ABL into an oncogene.⁷³ After the t(9;22) translocation the negative regulation of ABL is lost. The new fusion gene, BCR-ABL encodes an unregulated, cytoplasm-targeted tyrosine kinase that allows the cells to proliferate without being regulated by cytokines. Although the ABL gene product and BCR-ABL fusion protein has been extensively studied, the function of the normal BCR gene product is not clear. Parts of the ABL gene remains on the derived chromosome 9 and parts of the BCR gene translocates to the 9th chromosome, resulting in a ABL-BCR gene. This fusion gene is encoding a protein without any known function.

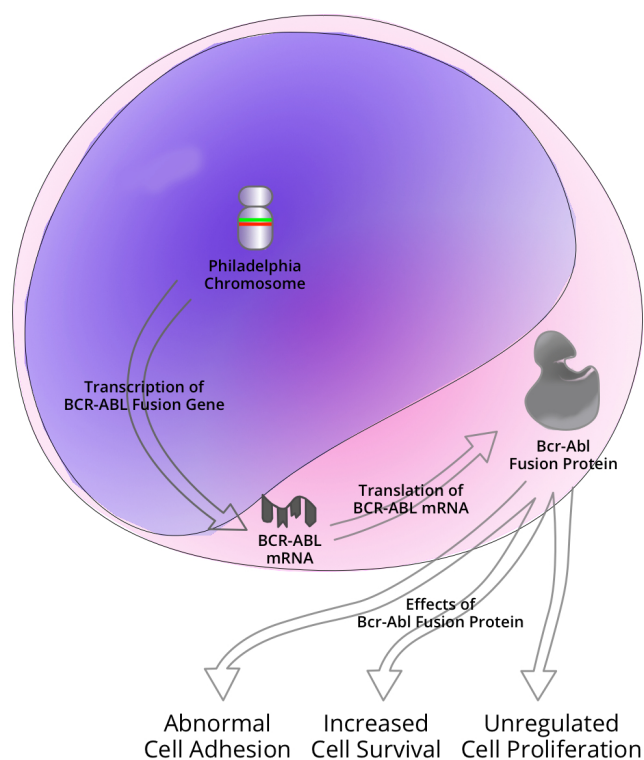


Fig 2. After the translocation between chromosomes 9 and 22, the BCR-ABL fusion gene undergoes transcription. The resulting BCR-ABL messenger RNA (mRNA) is then translated into the Bcr-Abl tyrosine kinase protein, which enhances cell proliferation, adhesion and survival.

The site of the breakpoint in the BCR gene differs, but in CML it is almost always in the major breakpoint cluster region [M-BCR, BCR-ABL junctions e13a2 (b2a2) and e14a2 (b3a2)]. Rarely the breakpoint occurs in the minor breakpoint cluster region (m-BCR e1a2) as in Ph positive acute lymphoblastic leukemia (ALL), or in the micro-region (μ -BCR, e19a2) as in chronic granulocytic leukemia.^{[11](#)}

The BCR-ABL fusion gene is transcribed into a messenger-RNA (mRNA) which will be translated to a protein, a tyrosine kinase called Bcr-Abl, which activates mediators of the cell cycle regulation system, leading to CML. The Bcr-Abl protein has different weight depending of the different breakpoint in the BCR gene, 190kDa (m-region), 210 kDa (M-region) or 230kDa, (μ -region) but typically 210 kDa in CML.^{[11](#)}

The Bcr-Abl tyrosine kinase protein is constitutively active, catalyzing the transfer of phosphate from ATP to a tyrosine residue on a substrate protein downstream, resulting in the CML phenotype, i.e. inhibition of apoptosis, increased proliferation and decreased adhesion to stroma cells via effects on Bcr-Abl substrates like CRKL, CBL, RIN, GAP and paxillin and further phosphorylation activates intracellular signal pathways like RAS, MYC and STAT.^{[11,74](#)}

The mechanism behind disease progression and clonal evolution, when additional cytogenetic aberrations occur, is still largely unknown. Genetic instability as a consequence of the the BCR-ABL translocation might be one explanation, alternatively, the mechanisms responsible for the translocation might trigger the changes leading to progression of the disease.^{[55](#)}

Five to 10% of CML patients have a variant translocation, which means that one or two additional chromosomes are involved in the 9:22 chromosomal translocation. All chromosomes have been described as participating in these variants, as an example t(3:9:22).^{[75,76](#)}

1.2.5 Clinical signs and symptoms

About 20-40% of the CML patients are asymptomatic at diagnosis.^{[51](#)} The disease is quite often detected at a routine medical examination. Others have symptoms like fatigue, sweats, weight loss and abdominal fullness. Sometimes symptoms caused by the large number of circulating leukocytes are seen eg. visual disturbances (due to vascular effects, including bleeding in the fundus of the eye), pain in the left flank (due to splenic infarction or enlarged spleen) and priapism.

In CML-CP, the peripheral blood shows an increasing amount of both mature and immature leukocytes together with mild anemia and sometimes increased number of platelets. Atypically the disease presents in CML-AP or CML-BP, without a previously detected CP. The more advanced phases of CML are generally accompanied by worsened performance status and by symptoms related to severe anemia, thrombocytopenia and/or marked splenic enlargement.

Blood count		Reference values
B-Hb (g/l)	105	134-170
B-Platelets (10⁹/l)	694	145-348
B-Leukocytes (10⁹/l)	124	3.5-8.8
B-Neutrophil granulocytes	47	1.8-7.5
B-Eosinophil granulocytes	2.5	0.04-0.4
B-Basophil granulocytes	3.7	0-0.1
B-Lymphocytes	9.9	2.9-4.5
B-Monocytes	9.9	0.1-1.0
<i>Immature myeloid cells</i>		
B-Band-formed granulocytes	17.4	0
B-Metamyelocytes	8.7	0
B-Myelocytes	14.9	0
B-Promyelocytes	5.0	0
B-Blasts	3.7	0
B-Erythroblasts	1.2	0

Table 2. Typical full blood count in a newly diagnosed CML-CP patient.

1.2.6 Treatment

Tyrosine Kinase Inhibitors

With improved understanding of the molecular mechanism involved in CML, the development of targeted therapies, such as tyrosine kinase inhibitors (TKI) has gradually improved. TKI inhibit the Bcr-Abl protein activity, thus stopping the leukemic phenotype. The first TKI for CML, imatinib mesylate was a major breakthrough in CML treatment. The large phase 3 clinical trial International Randomized IFN versus STI571=imatinib mesylate (IRIS) for newly diagnosed CML-CP patients started in 2000. The superiority of imatinib over IFN soon became obvious. After 12 months of treatment 69% of the imatinib treated patients had achieved CCyR compared to 7% in the IFN group.⁷⁷ After 6 years of treatment the OS was 88% (95% when only CML related deaths were considered) in the imatinib arm. Since a majority of the patients (65%) randomized to the IFN arm, crossed over to the imatinib arm mainly due to intolerance⁴⁶ it is difficult to correctly compare data between the two arms. However, in the British CML III study the 6-year OS was only 5% for patients treated with the IFN.⁷⁸ At a median of 8 years of follow up of the IRIS trial, the estimated OS of all patients randomized to receive imatinib was 85%. When only CML-related deaths was considered the figure was 93%.⁷⁹

Imatinib and later generations of TKI have improved the prognosis for CML patients in all disease phases, but most particularly for patients in CML-CP.⁸⁰ TKI induce a much faster reduction of BCR-ABL transcript levels than previously available drug therapies. Today TKI is formally approved as first line treatment for CML-CP in all ages. Currently there are three TKI approved by European Medicines Agency (EMA) and Food and Drug Administration (FDA) as first-line treatment in CML; imatinib, nilotinib and dasatinib. Additional TKIs (bosutinib and ponatinib) are currently being evaluated in clinical trials.

A recent French study has shown that approximately 40% of 100 imatinib treated patients with a deep molecular response could discontinue treatment, without any signs of recurrent disease within 2-3 years.^{81,82} Since 2nd generation TKIs as first line treatment seem to generate a larger number of patients with deep molecular response, it is possible that more CML-CP patients can discontinue the treatment in the future.

Although imatinib has dramatically increased survival for CML patients in CP the outcome of patients in more advanced phases has not been as successful. A treatment effect can be seen, but is usually transient. TKIs may play a role as a bridge to allogeneic SCT for patients who progress to BP. For patients progressing to AP during imatinib treatment a switch to a 2nd generation TKI may revert the disease into the CP.

Imatinib (Gleevec[®] or Glivec[®]) is a small molecule, created by using the structure of the ATP binding site of the ABL protein kinase as a template. It binds to the adenosine triphosphate-binding (ATP) site of Abl, thereby keeping the protein in an inactive form, thus inhibiting the phosphorylation of substrate and subsequent blocking the activity of the Bcr-Abl tyrosine kinase. The transmission of the oncogenic signal to the nucleus is by this interrupted and thereby the malignant transformation, since unphosphorylated Bcr-Abl tyrosine kinase is inactive.⁸³ Imatinib is relative specific for Bcr-Abl tyrosine kinase but also active against platelet-derived growth factor (PDGF) receptor^{84,85} and c-KIT receptor kinase.⁸⁶ In Sweden imatinib was approved for clinical use in 2001 and was the only TKI approved for newly diagnosed CML patients until 2010. The most frequent side-effects are oedema, muscle cramps, rash, nausea, diarrhoea, and hepatotoxicity.^{87 88 89}

Imatinib is also used in the treatment of gastrointestinal stroma tumor (GIST)^{90 91} in hypereosinophilic syndrome (HES)⁹² and chronic eosinophilic leukemia (CEL)⁹³ with FIP1L1-PDGFR α rearrangement,^{92,94,95} (PDGFR) gene, in unresectable dermatofibrosarcoma protuberans (DFSP)⁹⁶ and in Ph positive acute leukemias, mainly in ALL.^{97,98 99 100} However, except for newly diagnosed CML-CP patients, there are no controlled trials demonstrating a clinical benefit or increased survival for these diseases.

Dasatinib (Sprycel[®]) a second generation TKI, is a dual Abl/Src kinase inhibitor that binds to Abl kinase domain irrespective of the configuration of the activation loop. Dasatinib inhibits a lot more tyrosine kinases than imatinib and nilotinib. Dasatinib was approved in 2006 for CML (CP, AP and BC) with resistance or intolerance to imatinib and to Ph positive ALL in resistance or intolerance to prior therapy. It was approved for treatment of newly diagnosed CML patients in 2010 but the Swedish The Dental and Pharmaceutical Benefits Agency (TLV) does not reimburse the drug as first line treatment. Consequently it is not used beyond clinical trials as first line drug.

The DASISION (Dasatinib vs Imatinib Study in Treatment-Naïve CML patients) study in newly diagnosed patients, has shown a significantly superior response for the dasatinib vs. imatinib with a major molecular response (MMR) rates at 3 years of 68% vs. 55% treated.¹⁰¹ The rate of transformation to AP or BP was numerically (but not statistically significantly) lower for dasatinib: 4.7% vs. 6.7%.¹⁰¹ Treatment with dasatinib cause pleural effusion in 14-

26% of the patients [102,103 104 105 106 107](#) which seems more frequent in patients with previous cardiovascular/ pulmonary disease, and autoimmune diseases.[108](#)

Nilotinib (Tasigna[®]) a second generation TKI derived from imatinib, is a selective Abl inhibitor that binds to the inactive/closed conformation of the Abl kinase that also inhibits c-KIT, ARG, PDGF α and PDGF β . Nilotinib was approved in 2007 for treatment of CML patients with resistance or intolerance to imatinib and was in 2010 approved for newly diagnosed patients since the large randomized ENESTnd (Nilotinib Efficacy and Safety in Clinical trial-Newly Diagnosed Patients) study showed that nilotinib compared to imatinib resulted in deeper and faster short term treatment responses.[109,110](#) The cumulative rates of MMR by 3 years was 70% to 73% with nilotinib (two different doses) and 53% with imatinib, combined with a significantly lower rate of transformation to AP or BP was observed, 2.1-3.2% vs 6.7%, respectively.[111](#) Nilotinib may cause pancreatitis (about 1%), liver (5-10%), lipase increase (about 10%) and cause hyperglycaemia.[112](#)

Imatinib	ABL, ARG, BCR-ABL, KIT, PDGFR, DDR1/2, NQO2
Nilotinib	ABL, ARG, BCR-ABL, KIT, PDGFR, DDR1/2, NQO2
Dasatinib	ABL, ARG, BCR-ABL, KIT, PDGFR, DDR1/2, SRC, YES, FYN, LYN HCK, LCK, FRG, BLK, FRK, CSK, BTK, TEC, BMX, TXK, ACK, ACTR2B, ACVR2, BRAF, EGFR/ERBB, EPHA2, EPHA3, EPHA4 EPHA5, FAK, GAK, GCK, HH498/TNN13K ILK LIMK1, LIMK2 MYT1, NLK, PTK6/Brk, QIK, QSK, RAF1, RET, RIPK2, SLK, STK36/ULK, SYK, TAO3, TESK2, TYK2, ZAK

Table 3. Tyrosine kinase “targets” of imatinib, nilotinib and dasatinib.[113,114](#)

Treatment objectives

Today the key objectives of front-line therapy in **CML chronic phase** are to

- i) Prevent progression to the advanced phases (AP and BP)
- ii) Maximize achievement of CCyR and MMR which gives the patient a platform to achieve CMR and thereby a possibility of drug cessation.

There are three clinical milestones (interim targets) in the treatment response of CML-CP (Table 4)

- 1) Complete hematologic response (CHR)
- 2) Complete cytogenetic response (CCyR)
- 3) Deep molecular response, i.e. achieving major molecular response (MMR) and “complete molecular response” (CMR, signifying non-detectable transcripts, normally <MR4.0 – MR5.0).

The response to TKI treatment is generally fast, with normalization of leukocytosis/ thrombocytosis within weeks, followed by a gradual reduction of Ph positive cells in blood and bone marrow until achieving CCyR and MMR/CMR. To guide the physicians European Leukemia Net (ELN) and other organizations give valuable recommendations, which among other things specify *treatment goals at certain time points*.[37,49](#)

In trials, second generation TKIs as first line treatment seem to give a more rapid treatment response and with fewer patients progressing to AP and BP, compared to imatinib, but so far, no overall survival benefits have yet been reported.

Definitions of treatment response	
Hematologic response	
Complete (CHR):	B-WBC $<10 \times 10^9/l$ B-Basophils $< 5\%$ of WBC B-Platelets $<450 \times 10^9/l$ No leukocyte precursors in peripheral blood No palpable spleen
Cytogenetic response	(% Ph positive metaphases)
Complete (CCyR)	0
Partial	1-35
Minor	36-65
Minimal	66-95
No	>95
Molecular response	BCR-ABL % International scale (IS)
Major (MMR, 3.0 log reduction)	≤ 0.1
MR ^{4.0} (4.0 log reduction)	≤ 0.01
MR ^{4.5} (4.5 log reduction)	≤ 0.0032
MR ^{5.0} (5.0 log reduction)	≤ 0.001

Table 4. Definitions of treatment response.

Time	Optimal	Suboptimal	Failure	Warnings
At diagnosis				High risk. CCA/Ph+
3 month	CHR and at least minor CR	No CgR	Less than CHR	
6 month	At least PCgR	Less than PCgR	No CgR	
12 month	CCgR	PCgR	Less than PCgR	Less than MMR
18 months	MMR	Less than MMR	Less than CCgR	
Any time	Stable or improving MMR	Loss of MMR Mutations A	Loss of CHR or CCgR Mutations B CCA/ Ph+	CCA/Ph-

Table 5. Definitions according to ELN, of optimal and suboptimal response, failure and warnings for previously untreated patients with early chronic phase CML, treated with imatinib at certain time points. Mutation A= Still sensitive to imatinib. Mutation B= Poorly sensitive to imatinib. CCA= Clonal chromosome abnormalities.^{37,49}

Treatment in AP and BP

Patients diagnosed in AP may initiate treatment with a 2nd generation TKI. They should be carefully monitored, and if the patients do not reach the criteria for CP, allogeneic SCT should

be considered. For imatinib treated patients progressing to AP a switch to a 2nd generation TKI or SCT is needed.

For patients diagnosed in or that have progressed to BP, the prognosis is very poor. If CML is diagnosed in BP the patients should start TKI treatment in combination with ALL- or AML-like chemotherapy (depending on lymphoid or myeloid phenotype) and be considered for allogeneic SCT as soon as possible. If progressing to BP during imatinib treatment the patients should be prepared for allogeneic SCT if possible, and a switch to high dose dasatinib is then preferred (unless mutations resistant to dasatinib) to optimize the conditions for SCT. AML - or ALL-like chemotherapy could be given before transplantation.

The response to TKI in BP is expected to be transient. Allogeneic SCT has a curative potential for CML and the best results are achieved for patients transplanted in CP.¹¹⁵⁻¹¹⁸ SCT in overt BP is not recommended.¹¹⁶

Treatment failure

If imatinib treatment of a CML-CP patient does not meet the ELN criteria for “optimal” response at a certain time point (see table 1), the response may be regarded as “suboptimal” or as a “failure”. There are several explanations for not achieving optimal response. Both BCR-ABL dependent and independent mechanisms have been suggested; poor compliance, reduced bioavailability, mutations in the Bcr-Abl tyrosine protein pocket, clonal evolution or resistance to the drug etc. When treatment *failure* is a fact, a change of treatment is needed. Both dasatinib and nilotinib have been shown to have clinical activity in CML patients with intolerance or resistance to imatinib.¹¹⁹⁻¹²³ Another options is allogeneic SCT.

In the case of BCR-ABL independent factors, a dose escalation of imatinib may be successful. There are currently about 100 known mutations, rendering imatinib therapy suboptimal or failing. In most cases, 2nd generation TKI can overcome this.^{124,125} Nilotinib is sometimes a better choice than dasatinib, or vice versa, related to specific mutations. Dasatinib thus seems to be more effective than nilotinib in the presence of BCR-ABL mutations such as Y253F/H, E255K/V, F359C/V while in the presence of Q252H, V299L and F317L, nilotinib is preferable to dasatinib.¹²⁶ Only one mutation, T315I (threonine 315 isoleucine) is completely resistant to imatinib, dasatinib and nilotinib.¹²⁷ However, ponatinib, a multi-targeted tyrosine kinase inhibitor, has in an on-going clinical trial shown efficacy against this mutation.¹²⁸ The AP may after a switch of TKI be induced to revert into the CP. In BP the effect of TKIs is very limited. If any effect, it is not durable, but can act as a bridge to allogeneic SCT, which is the only treatment offering long-term survival for patients in BP.¹²⁹

Surrogate markers for long-term outcome

CCyR, MMR and CMR are the therapeutic goal in treatment of CML-CP in order to minimize the risk of transformation into advanced phases. For many years, the main goal of treatment was to achieve CCyR, since studies had shown that CCyR was associated with survival benefits.¹³⁰⁻¹³² With the introduction of imatinib treatment, a majority of the patients achieved CCyR. Many had an even better response, major molecular response (MMR), which gave further improved OS ^{46,49,130,131,133,134} compared to patients with CCyR but without MMR.¹³⁵ Furthermore, 2nd generation TKI (dasatinib and nilotinib) as first line treatment seem to give an even deeper and

faster response, and the proportion of patients achieving MMR is higher at 12 months than with imatinib. ^{109,136,137} Today the IRIS study has given the clinicians more than 10 years of experience regarding imatinib treatment. At 5-year the cumulative incidence of CCyR in the imatinib arm was 87%.¹³⁰ At that time 93% of the patients had not progressed to the accelerated or blastic phases. The estimated 5 year OS was 89%.¹³⁰ However at 5 years 31% of the patients in the IRIS study had discontinued imatinib treatment and were censored.¹³¹ Clinical trials using “intention to treat” criteria may be difficult to interpret as for instance in the IRIS study. The achieved OS is not only reflecting imatinib treatment, but eventually also second line TKI and/or allogeneic SCT, thus the OS in the IRIS study is likely overestimated, reflecting only imatinib treatment.

However, achieving CCyR and MMR seems to give the patients long-term event free and overall survival, but there is also a time aspect when the goals are achieved. Reducing the tumour load is important to reduce the risk of progression to more advanced phases. Having achieved CCyR and MMR the annual risk of progressing is low. For example, in the IRIS study no patient that had achieved MMR at 12 months subsequently progressed into AP or BP in the 5-year follow-up¹³⁰. Detailed recommendations are available for monitoring and timing of treatment goals, provided by groups and individual centers. In Sweden the national recommendations¹³⁸ are used which are similar to the guidelines of ELN. To further improve the outcome, we probably need to act earlier in the disease process, at an earlier time than guidelines advise us today.

1.3 SWEDISH POPULATION REGISTRIES

Since 1947 all Swedish citizens are given a unique identification code at birth. For each individual, date of death is centrally registered in the nation wide “*Cause of Death Registry*”¹³⁹. Furthermore, every physician, pathologist and cytologist are obliged by law to report occurrence of cancer to the population-based national wide “*Swedish Cancer Registry*”¹⁴⁰ established in 1958. Through these high quality registers it is possible to follow patients from the date of cancer diagnosis to death. *The Swedish CML Registry*, established in 2002, collects information once a year from physicians treating CML patients throughout the course of the disease. The registry is unique, with nearly all CML cases in Sweden included.

2 AIMS

Overall aims

To improve management of patients with CML by

- i) identifying early biological markers linked to long-term clinical outcome of imatinib treatment
and
- ii) establishing population-based survival data including health economic aspects with special focus on imatinib treatment

Specific aims

I.

To evaluate the impact of early reduction of disease burden on long-term outcome (i.e. landmark analysis) in imatinib treated patients.

II.

To evaluate the effect of imatinib treatment on neutrophil leukotriene signaling and assess its possible role as a clinical marker of CML treatment response.

III.

To define real life outcome of patients with CML in Sweden during four decades and to relate the survival patterns to imatinib treatment and other management strategies.

IV.

To evaluate health economic aspects of real life treatment of CML in Sweden, comparing imatinib with previous and alternative therapeutic strategies.

3 STUDY OF PROGNOSTIC FACTORS-LANDMARK ANALYSIS (I)

3.1 METHODOLOGICAL ASPECTS

Imatinib has dramatically improved the outcome in CML-CP, but still some patients continue to respond sub optimally or become resistant to imatinib. These patients need alternative treatment with an early switch to 2nd generation TKI or allogeneic SCT. Standard dose imatinib (400mg q.d.) has been reported to induce CHR in the majority of patients and CCyR in 69% within 12 months of treatment, but a minority of the patients still does poorly. In the IRIS study, 34% of the patients had discontinued their initial imatinib therapy at 5 years because of different reasons, mostly intolerance or resistance. Seven percent of the IRIS study patients had progressed to AP or BP within 2 years.¹³⁰ The risk of progression seems to peak during the first year of treatment, before the tumour burden radically has been decreased. Apparently, we need to act early of signs of non-optimal response, to improve outcome in imatinib treated patients.

CBA has for many years been the gold standard for evaluating treatment effects and to reach a status of non-detectable Ph-chromosomes (CCyR) by 12 months, has been regarded as one of the treatment goals. Since 30% of the patients do not reach that goal it is of interest to early identify patients having an increased risk of progression of the disease.

In an attempt to identify markers of early non-responders, we followed 45 newly diagnosed CML-CP patients initiated on imatinib treatment at standard dose at Karolinska University Hospital. We evaluated the treatment responses by repeated FISH, PCR and cytogenetics assessments initially at 3 months intervals.

3.1.1 Cytogenetic Banding Analysis (CBA)

Conventional cytogenetic analyses of bone marrow samples were performed at the Department of Clinical Genetics, Karolinska University Hospital. All investigations were done using standard G-banding technique and followed the rules of International System for Human Cytogenetic Nomenclature, ISCN. Cytogenetic response evaluations were regularly based on full analysis of at least 20 metaphases. Of a total of 257 samples in this study, 246 contained 20 or more metaphases, with a median of 29 metaphases analysed per sample.

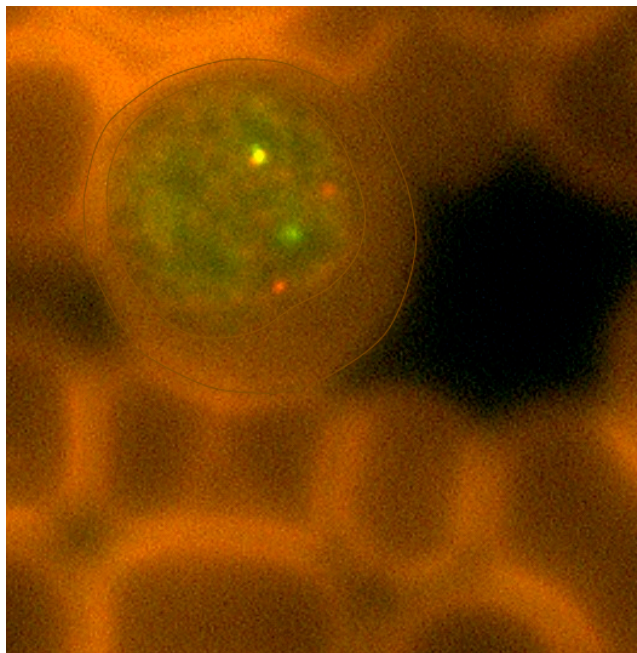
3.1.2 Fluorescence In Situ Hybridization (FISH)

DNA-probes directed against the BCR and ABL genes are added to a smear of blood or bone marrow cells and are analyzed in an epifluorescence microcope. The reliability of FISH is largely dependent on the quality of the DNA probe used.^{141,142,143} Different probes show different signal patterns.¹⁴⁴ The Extra Signal Dual Color Translocation Probe-FISH (ES-FISH) reduces the number of falsely BCR-ABL positive cells, compared to the earlier used Dual Color Single Fusion Translocation Probe-FISH (S-FISH).^{143,145} Our control studies showed that the ES probe, in our hands, had high sensitivity and specificity, similar to the Dual Color Dual

Fusion translocation Probe (D-FISH).¹⁴⁶ One disadvantage with ES-FISH compared to D-FISH is that Ph-clones with minor deletions of the long arm of chromosome 9 can be missed because these aberrations will give the typical signal pattern 1G1O1F.

In our study we performed interphase FISH on unseparated nucleated cells on bone marrow smears, using an extra signal dual-color DNA probe (LSI BCR-ABL ES Dual Color Translocation probe, Vysis, IL). The probe is a mixture of the LSI ABL probe labeled with spectrum orange and the LSI BCR probe labeled with spectrum green. The spanning ABL probe is approximately 650kb extending from an area centromeric of ASS gene well telomeric of the last ABL exon. The spectrum green BCR probe is approximately 300 kb beginning between BCR exons 13 and 14 (M-BCR region). A cell lacking the BCR-ABL fusion gene will exhibit a two orange and two green signal pattern (2O2G). In a cell carrying the fusion gene one green (native BCR) one large orange (native ABL), one smaller orange (rest signal of ABL on the derivate chromosome 9) and one fused green/orange (BCR-ABL) (2O1G1F).

On each patient smear a median of 400 nucleated cells were analysed.



*Figure 3. A BCR-ABL positive cell with the typical ES probe signal pattern 2O1G1F.
(Photo Ingrid Arvidsson)*

Control studies for FISH

Bone marrow smears from nine Ph-negative controls were analyzed using the ES probe. In each case 500 cells were scored. The mean percentage of “not true” BCR-ABL positive cells among these controls was 0.031% (SD 0.075%) For the purpose of our study (I) we decided to define the cut-off level for a “true” positive sample to $\geq 0.25\%$ (mean +2.576xSD).

Further cytospin preparations from the CML cell line K562 were used as positive controls. All (100%) of 2500 K562 cells examined with the ES-probe depicted the typical fusion pattern (2O1G1F).

To compare DS-FISH with ES-FISH, we analyzed nine patient samples with both probes. We found a strong correlation ($r=0.87$; $p=0.0003$).

3.1.3 Quantitative reverse-transcriptase Polymerase Chain Reaction (qRT-PCR)

The Department of Clinical Genetics, Karolinska University Hospital, Stockholm, performed the PCR analysis. For samples prior to October 2008 peripheral blood mononuclear cells were separated by the Ficoll-PaqueTM PLUS (GE Healthcare, UK) and total RNA was isolated using Trizol® reagent (Invitrogen, Carlsbad). From October 2008 and onwards, total blood leukocytes were used for RNA isolation. RNA (1µg) was reverse-transcribed into cDNA as described elsewhere using pd(N)6 random hexamer (GE Healthcare, UK) and M-MLV enzyme (Invitrogen, Carlsbad).¹⁴⁷ ABL and GUS were used as control genes to correct for variations in RNA quality and quantity.¹⁴⁸ The BCR-ABLp210 and BCR-ABLp190 mRNA transcripts were assessed by quantitative real-time RT-PCR, as described previously.^{148,149} ABL and GUS were used as reference genes. In this studies, we consequently expressed the amount of BCR-ABL transcript as a ratio of BCR-ABL copy number relative to 100 ABL copies, since the IS not yet was established in our laboratory at that time.

3.1.4 Statistical methods

The probabilities of OS and event free survival (EFS), where events were defined as response loss, progression or death, in line with ELN recommendations.⁴⁹ OS and EFS were calculated using Kaplan-Meier method¹⁵⁰ according to the intention-to-treat principle. The association between early determinations of BCR-ABL or Ph-expression, as assessed by the three different techniques and the long-term clinical outcome was examined using contingency tables and Fisher's exact test.

3.2 RESULTS AND DISCUSSION

The median follow up was 58 (range 15-115) months. Within 12 months of treatment 80% achieved CCyR and 42% MMR. Corresponding figures at 24 months were 97 and 84%. After 3 months of treatment the median BCR-ABL expression was 9.8 (range 0-95)% according to FISH and 16.0 (range 0-100)% according to PCR. Corresponding figures for 6 months were 0.25 (range 0-65)% for FISH, 1.2 (range 0-85)% for PCR and 0 (range 0-100)% for CBA.

Four patients (8.8%) progressed to AP within 16 months. One patient later progressed into BP after initially having achieved CCyR.

In a landmark analysis, an early favourable response, defined as < 10% BCR-ABL positivity by FISH after 3 month of treatment, was identified as a predictive marker of an improved long-term clinical outcome. Thus of evaluable patients, 51% achieved this response. Ninety-five per cent of such responders reached CCyR within 12 months and 100% had an event-free survival

at 48 months as compared to 67 and 65%, respectively, of patients with higher ($\geq 10\%$) BCR-ABL positivity at 3 months.

	BCR-ABL positive cells by FISH			BCR-ABL <i>mRNA</i> by PCR		
	<10%	$\geq 10\%$	P-value	<10%	$\geq 10\%$	P-value
<i>3-month landmark</i>						
CCyR at 12 months	18/19 (95%)	12/18 (67%)	0.042	11/12 (92%)	11/15 (73%)	0.342 <i>ns</i>
EFS at 36 months	19/19 (100%)	12/18 (67%)	0.008	10/11 (91%)	11/16 (69%)	0.350 <i>ns</i>
EFS at 48 months	19/19 (100%)	11/17 (65%)	0.006	9/10 (90%)	11/16 (69%)	0.350 <i>ns</i>
<i>6-months landmark</i>						
CCyR at 12 months	21/24 (88%)	1/4 (25%)	0.022	23/27 (85%)	5/8 (63%)	0.312 <i>ns</i>
EFS at 36 months	21/24 (88%)	2/5 (40%)	0.046	24/27 (89%)	7/8 (87%)	1.0 <i>ns</i>
EFS at 48 months	21/24 (88%)	2/5 (40%)	0.046	21/24 (88%)	6/7 (86%)	1.0 <i>ns</i>
<i>12-months landmark</i>						
EFS at 36 months	17/18 (94%)	0/3 (0%)	0.003	31/34 (91%)	0/2 (0%)	0.016
EFS at 48 months	17/18 (94%)	0/3 (0%)	0.003	27/30 (90%)	0/2 (0%)	0.020

Table 6. Number of patients with CCyR at 12 months, EFS at 36 months and EFS at 48 months, related to responses at 3 and 6 months assessed by FISH and PCR.

We showed that significantly more patients with a reduction of the malignant clone to <10% at 3 months of imatinib treatment achieved CCyR within 12 months compared to those that failed to reach this level of reduction. They had also a significantly better EFS both at 36 and 48 months compared to patients with BCR-ABL $\geq 10\%$ by FISH at 3 months. This finding is consistent with other research groups,^{151,152} using the qRT-PCR method, observing that patients with PCR levels $\geq 10\%$ at 3 month are likely to respond poorly on imatinib therapy. Marin et al found that patients with transcript levels of more than 9.84% (n = 68) at 3 months had significantly lower 8-year probabilities of OS (56.9% v 93.3%; p <0.001), progression-free survival, cumulative incidence of CCyR, and CMR than those with lower transcript levels.¹⁵¹ Hanfstein et al found persistence of BCR-ABL transcript levels >10%, according to the IS at 3 months, to separate a high-risk group (28% of patients; 5-year OS: 87%) from a group with 1-10% BCR-ABL.¹⁵² In contrast, when we performed landmark analysis on our patient cohort with PCR, we did not observe the same predictive value as with FISH. The fact that we did not use IS in our study may explain why we did not find the same predictive value with PCR <10% as other groups have. Although PCR has become the dominating method for monitoring TKI treatment, particularly to detect minimal residual disease (MRD), the technique can be inconsistent with considerable intralaboratory and interlaboratory variations. Thus, this will be a minor problem when laboratories have harmonized the PCR standard to the IS. Despite this, many physicians do not have access to laboratory service with the semi-quantitative PCR method. The well-established FISH method could then be of great value.

In our study four patients (8.8%) progressed to AP within 16 months using the WHO classification, which is slightly more than is reported in the IRIS trial where 7.9% progressed within 18 months.⁷⁷ However, in the IRIS study, a different definition of AP and BP was used. In the IRIS study definition of AP was $\geq 15\%$ blasts in peripheral blood or bone marrow and for BP $\geq 30\%$ blasts, compared to 10-19% and $\geq 20\%$ respectively, in the WHO classification. If WHO classification would have been used in the IRIS study, probably more patients would have been considered to have progressed to AP or BP.

All of our four patients had clonal evolution in their Ph⁺ cell clones. Thus, undoubtedly, they had progressed to AP. They were all scored as Sokal intermediate risk at diagnosis. Two of these four patients regained chronic phase after treatment with second generation TKI, while the remaining two died. All patients with Sokal high-risk score achieved CCyR within 12 months, although high-risk patients in general have an increased risk of progression.^{130,153 154}

Our data, even though based on a limited patient cohort, indicate that FISH can effectively be used in the early assessment of remaining Ph-positive cells to identify patients at risk for a long-term non-optimal response to imatinib. In clinical practice; sufficient data presently indicate that a change of treatment to 2nd generation TKI should be considered if BCR-ABL levels persist above 10% after 3 months of treatment with imatinib, as measured with PCR or FISH or PCR.

4 STUDY OF PROGNOSTIC FACTORS - LEUKOTRIENE SIGNALING (II)

4.1 BACKGROUND

Leukotrienes (LTs) are a family of lipid mediators derived from arachnoid acid with important signaling molecules in inflammatory and allergic conditions.^{155-158,156-159} Leukocytes can form various types of leukotrienes (hence their name) via an initial conversion of arachnoid acid to LTA₄, a reaction mediated by the 5-lipoxygenase (5-LO) enzyme. Members of our group have previously reported data indicating a role for certain leukotrienes also in CML. Thus, we have found that the bioactive cysteinyl-containing leukotriene C₄ (LTC₄) can stimulate normal human myelopoiesis¹⁶⁰ and that myeloid cells from CML patients have a markedly increased capacity to synthesize LTC₄.^{160,161} Moreover, neutrophils from CML patients were noted to possess significant leukotriene C₄ synthase (LTC₄S) expression and activity, while this is not the case for normal neutrophils.^{162,163} Recently, the 5-LO was suggested as a crucial growth regulator for leukemia stem cells (LSC) in CML, since gene expression profiles using DNA micro array technique identified Alox5, the gene encoding 5-LO, as highly and selectively expressed in LSC. Blocking the Alox5 activity impaired LSC function and prolonged survival in mice with CML.¹⁶⁴ These data indicate a role for Alox5 and LTC₄ in CML leukemogenesis. In this study we examined and followed the response of imatinib treated CML-patients over time, to analyse whether imatinib could regulate neutrophil LTC₄S expression and activity in vivo and if so, whether such changes were paralleled by changes in the expression of BCR-ABL. If so, a normalization of neutrophil LTC₄S and/or activity might be used as a novel indirect biomarker of early treatment efficacy. Furthermore, we also aimed at estimating the LTC₄ production in vivo, by assessing urinary excretion of the LTC₄ metabolite LTE₄ in individual patients with CML and healthy controls.

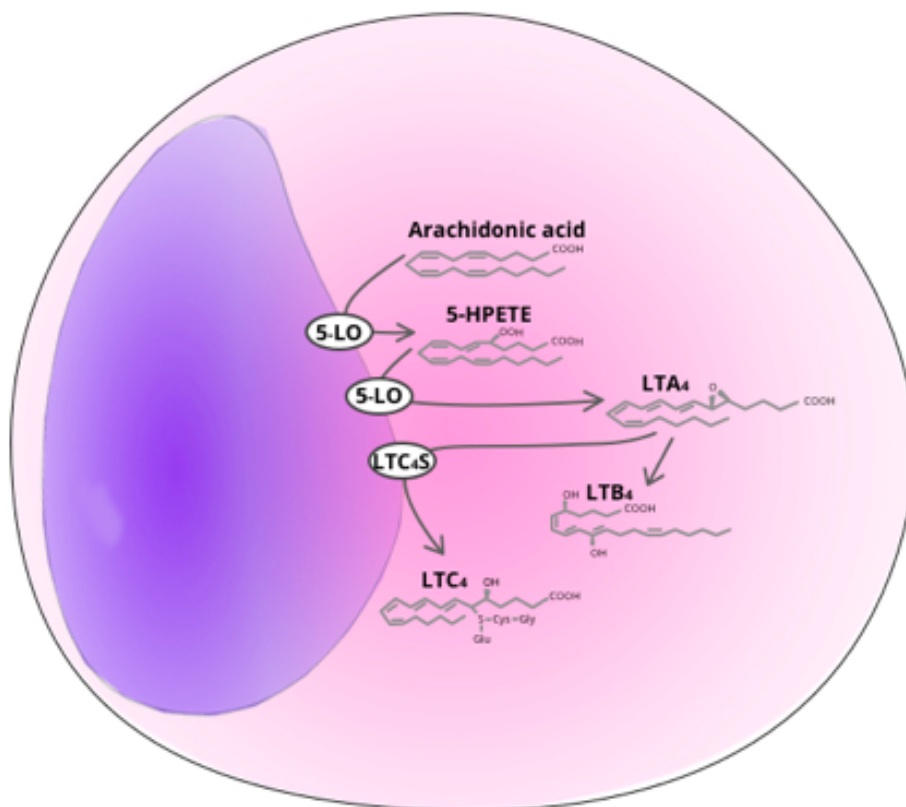


Fig 4. Enzymatic biosynthesis of leukotrienes from arachidonic acid. 5-LO= 5-lipoxygenase. LTC₄S=Leukotriene C₄ synthase.

4.2 PATIENTS AND METHODS

We sequentially studied the activity and expression of LTC₄S in neutrophils from CML patients subjected to imatinib treatment, and related these data to the parallel development of BCR-ABL-expression. A total of eleven CML-CP patients, three newly diagnosed and eight with previous IFN therapy, were assessed. Blood samples were drawn before start of imatinib therapy and then after 2 weeks, 1, 4, 6 and 9 months of treatment. Peripheral blood CD16⁺ neutrophils were isolated using magnetic cell sorting (MACS). Their LTC₄S activity assessed (i.e. Formation of LTC₄ from LTA₄) as measured by high performance liquid chromatography, (HPLC) and LTC₄S expression determined at the protein (immunoblot) and mRNA (RT-PCR) levels. In parallel, Ph-chromosome expression was assessed by bone marrow cytogenetics and by performing FISH on smears of peripheral blood identifying and specifically scoring neutrophilic granulocytes by a combined May-Grünwald-Giemsa staining and regular FISH technique cells, which makes it possible to allocate specific chromosomal aberrations (in this study BCR-ABL) in morphologically defined cells.^{165,166}

4.2.1 Statistical methods

The two-sided Student's test for unpaired samples was employed to compare mean values of LT production in the different cell fractions

4.3 RESULTS AND DISCUSSION

We demonstrated that in vivo-treatment of CML patients with imatinib led to a normalization of the aberrant LTC₄S expression and activity. In general, this normalization occurred in parallel to a reduced DNA-expression of BCR-ABL, but the time courses of these changes were different. Already after 14 days of imatinib treatment we found a significant decrease of LTC₄S activity in the neutrophils while the BCR-ABL expression remained unaltered in these cells at the same time point. We propose that a block of p210/Bcr-Abl protein activity in neutrophils by imatinib blocks down-stream 5-LO/Alox5 activity and thereby LTC₄S and LTC₄ formation. This can occur in CML cells that still express the Ph chromosome. Later, when imatinib treatment has resulted in replacement of Ph-positive CML cells with normal Ph-negative cells, LTC₄S activity remains low or non-detectable while FISH and cytogenetics show no or low BCR-ABL expression.

Thus, it is possible that analyses of neutrophil LTC₄S and/or LTC₄ expression may serve as early biomarkers of initial phase clinical imatinib response in CML-CP. Although TKIs are the standard treatment of CML today, resistance to these drugs remains a problem for certain patients. Targeting complementary, aberrant signaling pathways down-streams of or parallel to Bcr-Abl tyrosine kinase may provide a constructive option.

Furthermore, urine samples from 23 CML-CP patients were analyzed and compared to urine samples from 18 healthy controls to look for differences in LTE₄ excretion, which is considered to represent the combined in vivo formation of the LTC₄, LTD₄ and LTE₄, the cysteinyl LTs (cysLTs) in humans.¹⁶⁷ Notably, a significantly higher level of LTE₄ was observed in the CML group. This indicates indeed a higher in vivo production of LTC₄ in the leukemia patients and further supports a pathophysiological role for the cysLTs in CML.

The recent results by Chen et al demonstrating that blocking the 5-LO with the asthma drug zileuton inhibited the leukomogenesis in CML induced mice are consistent with our findings of a relationship between 5-LO, LTC₄ and BCR-ABL in CML. An ongoing clinical study in USA is examining the effect of combining the 5-LO inhibitor zileuton with imatinib in newly diagnosed CML-CP patients. This study is planned to be completed in 2014.

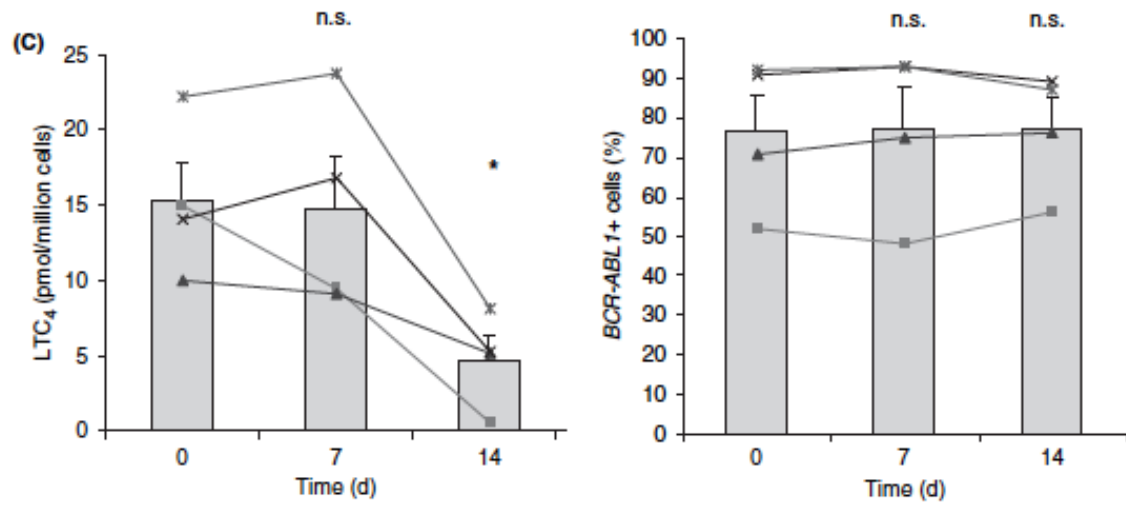


Figure 5. LTC₄S activity in CD16 (+) neutrophils (left panel) and the parallel occurrence of BCR-ABL, investigated by FISH (right panel) from CML patients before, after 7 and 14 days of treatment with imatinib. The lines represent individual patients and the bars show mean \pm SEM (n=4) of experiments performed in duplicate.

5 POPULATION-BASED STUDIES OF SURVIVAL IN CML (III)

5.1 PATIENTS AND METHODS

Our aim was to assess trends in survival, among all patients diagnosed with CML in Sweden, regardless of clinical trial enrollment, during a 36-year period. In the 1970s, at the start of the study period, busulphan was the dominating therapeutic agent. It was followed by a more widespread use of hydroxyurea and the introduction of IFN and allogeneic SCT. Most importantly, imatinib was available in study protocols from 2000 and it was approved by the Swedish Medical Products Agency (MPA) in November 2001 for CML patients in advanced phase CML and in “interferon failing” CP.

We included information on all newly diagnosed CML patients (n=3173; 1796 males and 1377 females; median age 62 years), reported to the Swedish Cancer Registry¹⁴⁰ from 1973 to 2008 using the International Classification of Diseases Version 7 (ICD 7). The diagnosis was coded as 2051. Patients in all phases of CML were included. The exact proportion of patients diagnosed in the advanced phases is known only for period the 2002-2008: 4% in AP and 3% in BP. The Swedish CML Registry, to which more detailed information about disease characteristics is reported, was established in 2002,⁵³. Information from the Swedish Cancer Registry¹⁴⁰ included date of birth, gender, date of diagnosis, region, and hospital where the diagnosis was made. All patients were observed from the date of diagnosis until death, emigration, or end of follow-up (December 31, 2009). We excluded individuals who were diagnosed incidentally at autopsy. The choice to include patients from 1973 was based on the fact that by then, the Swedish Cancer Registry, established 1958, had reached a high rate of coverage.^{168,169} Patients with a preceding cancer diagnosis, including those with a hematological malignancy, were included. Date of death was obtained from Cause of Death Registry.¹³⁹ Information of the use of upfront imatinib was collected from the Swedish CML registry. Information on the number of SCTs performed in CML patients during this time period was obtained from the registry of the European Group for Blood and Marrow Transplantation (EBMT), established in 1974.

5.1.1 Statistical methods

Relative survival ratios (RSR) were computed as measures of CML survival.^{170,171} The important advantage of using RS is that it does not rely on the accurate classification of cause of death. Instead, in this project it provides a measure of total excess mortality associated with the diagnosis of CML, irrespective of whether the excess mortality was a direct or indirect result of the cancer (here CML). As such, the RSR allows capturing the excess mortality resulting from, e.g. infection or second primary malignancies, which is not possible when using cause-specific survival. The RSR is defined as observed survival in the patient group (where all deaths are considered as events) divided by the expected survival of a comparable group from the general population, which is assumed to be free from the cancer in question. One, 5 and 10 year RSRs can be interpreted as the proportion of patients with CML who survived the malignancy at 1, 5 and 10 years, respectively. Expected survival was estimated using the Ederer II method¹⁷² from

Swedish population life tables stratified by age, sex, and calendar period. One, 5, and 10 year RSRs were calculated for patients diagnosed during five calendar periods and five age categories. Poisson regression was used to model excess mortality¹⁷³ to estimate the effects of the factor described, while controlling for potential confounding factors. Parameter estimates from this model are interpreted as excess mortality rate ratios (EMRRs). An EMRR of e.g. 1.5 for men/women indicates that men experience a 50% higher excess mortality rate (difference between observed and expected mortality) than women. All calculations were performed using Stata 11 (StataCorp, College Station, TX).

5.2 RESULTS AND DISCUSSION

Using data from the population-based Swedish Cancer Registry and population life tables, we estimated RS for all patients diagnosed with CML between 1973-2008. Patients were categorized into five age groups and five calendar periods (<50, 50-59, 60-69, 70-79, >79 years; and 1973-1979, 1980-1986, 1987-1993, 1994-2000, 2001-2008.)

Relative survival improved with each calendar period, with the greatest improvement between 1994-2000 and 2001-2008. Five-year cumulative relative survival ratios (95% CIs) were 0.21 (0.17-0.24) for patients diagnosed 1973-1979, 0.23 (0.20-0.27), 0.37 (0.33-0.41) 0.54 (0.50-0.58) 1994-2000, and 0.80 (0.75-0.83) for 1980-1986, 1987-1993, 1994-2000 and 2001-2008, respectively. This improvement was confined to patients younger than 79 years of age. Five-year RSRs for patients diagnosed from 2001 to 2008 were 0.91 (95% CI, 0.85 to 0.94) and 0.25 (95% CI, 0.10-0.47) for patients younger than 50 and older than 79 years, respectively. Men had inferior outcome. Upfront overall use of imatinib increased from 40% (2002) to 84% (2006). Only 18% of patients older than 80 years of age received imatinib as first-line therapy.

Throughout all calendar periods age was a strong predictor of survival, with superior survival in the youngest patients. In analyses including age and period of diagnosis, RS clearly improved with calendar period in all age groups, but was most pronounced in patients younger than 79 years of age, particularly those 70 to 79 years of age. The use of imatinib as first line treatment was confirmed by data from the national CML registry. Imatinib was used in 40% of the newly diagnosed CML patients in 2002, in 78% 2004, and in 90% in 2007. This large population-based study reveals a major improvement in outcome of patients with CML up to 79 years of age diagnosed from 2001 to 2008, mainly caused by an increasing use of imatinib. The elderly patients still had a poor outcome, partly because of a limited use of imatinib. However, according to a later report from the Swedish CML registry⁵³, the primary use of imatinib (or other TKI) in patients >80 years of age, diagnosed 2007 - 2010, has increased to 72%, showing an attitude change in the approach to the treatment of CML in the elderly, in favor of more active treatment.

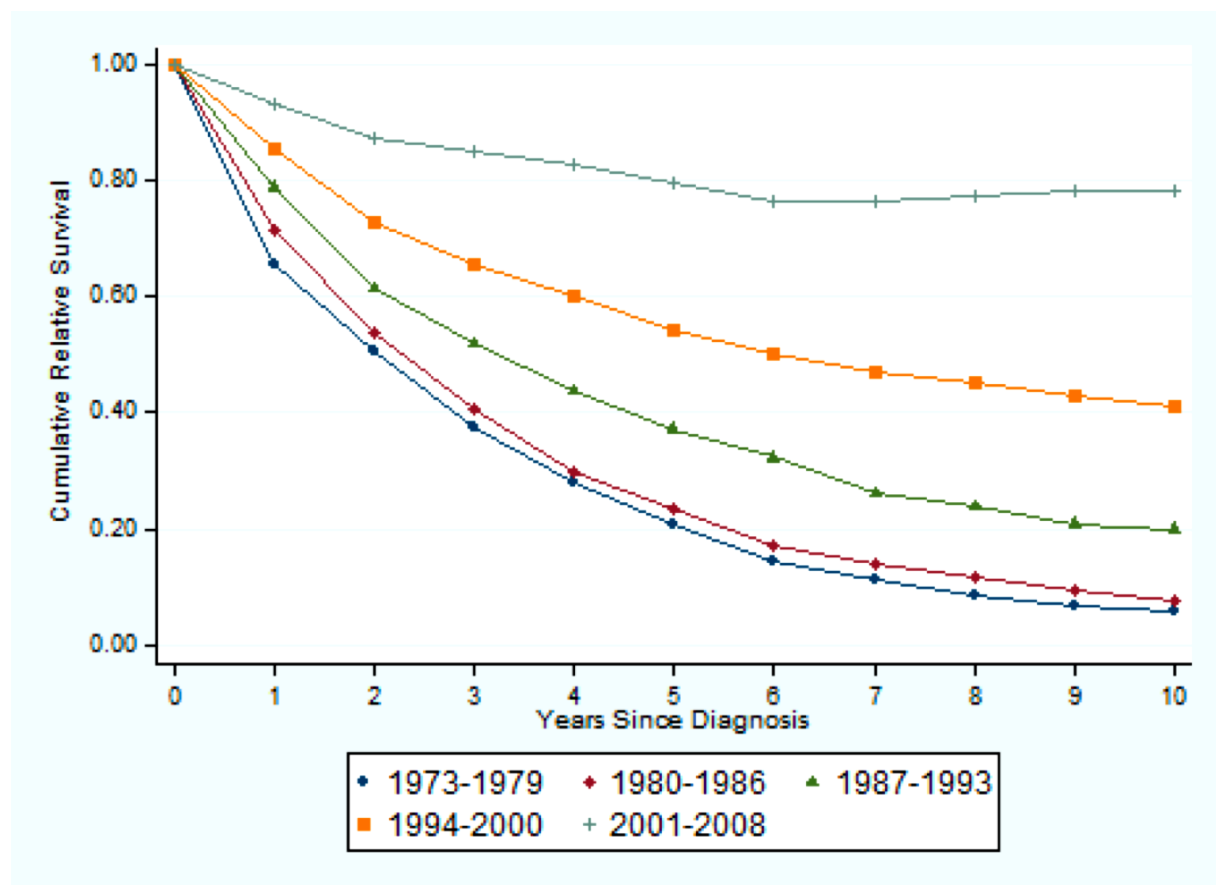


Figure 6. Cumulative relative survival ratios by calendar period of diagnosis.

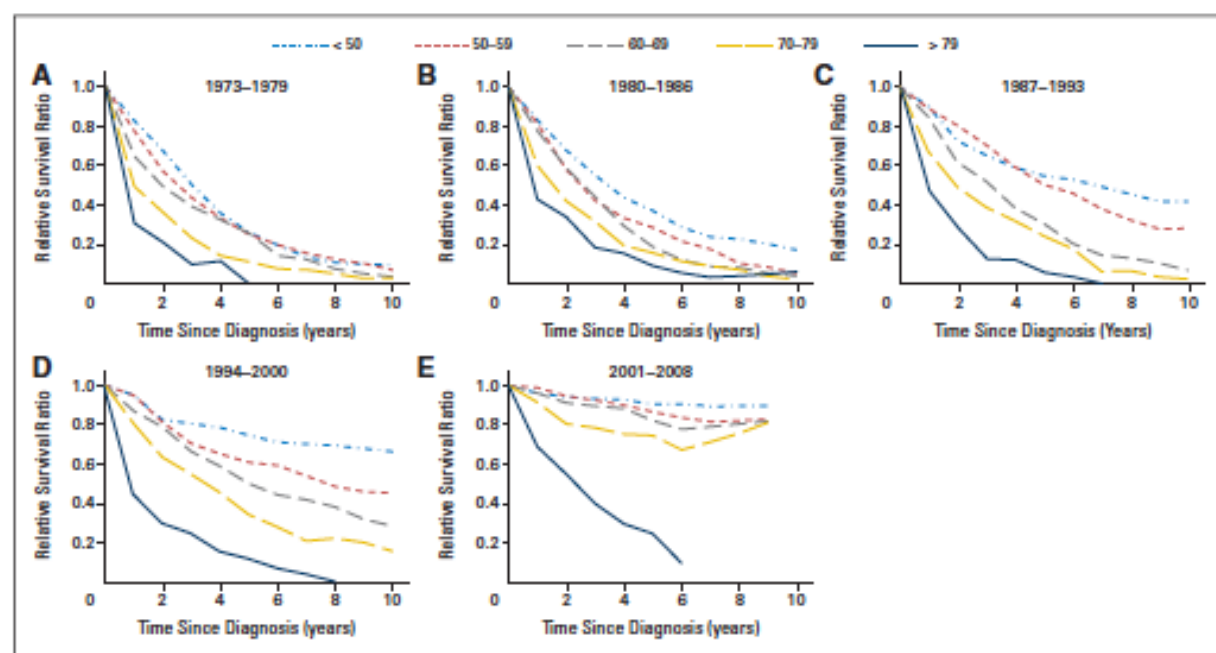


Figure 7. Cumulative relative survival by age (years) and period of diagnosis.

6 HEALTH ECONOMIC ASPECTS OF CML TREATMENT (IV)

6.1 PATIENTS AND METHODS

Medical advances have improved the outcome for patients with CML, especially during the most recent decade. The tyrosine kinase inhibitor imatinib was introduced in the treatment of CML 2000-2001 and has been a breakthrough in treatment of CML. Imatinib allows a faster, deeper and more pronounced reduction of BCR-ABL transcript levels than previously available drug therapy. This is associated with a lower rate of progression and an improvement of survival¹³⁰ leading to an increased prevalence. One disadvantage with imatinib and other TKIs is that they are costly to the society. We wanted to compare the costs of different decades and to relate the costs to the expected improved survival. Using the unique real world national data from CML patients diagnosed in Sweden from 1973 to 2008, (n=1778) we evaluated the incremental cost-effectiveness ratio (ICER) between periods associated with broad implementation of imatinib, (Glivec®), IFN and allogeneic SCT, and symptomatic treatment, respectively.

6.1.1 Statistical methods

A lifetime cohort cost-effectiveness model with three age cohorts (<50; 50-69; and 70+ years) diagnosed during three calendar periods (I: 1973–1979; II: 1991–1997; III: 2002–2008) was developed. The number of patients diagnosed in each calendar period was I: 609, II: 576, III: 593. The three periods were selected in order to capture broad implementation of three different treatment therapies prevailing at the respective time period, namely; I. Busulphan II. Allogeneic SCT or a combination of IFN and hydroxyurea and III. Imatinib. The stratification of data into age cohorts reflected the fact that treatment decisions were made partly with respect to age, where patients eligible to allogeneic SCT were typically younger than 50 years. The model allowed separate distributions of therapies (type, resource use) and outcome (survival, quality of life) for each age cohort and period (I-III)

We compared the quality adjusted life years (QALYs) and lifetime costs for an average person if treated for CML with therapies as provided in each of the three periods. The value of continued medical advances was compared by calculating the incremental cost-effectiveness ratio (ICER) per QALY gained for each period compared to the previous period. For example, the ICER of period III versus period II was:

$$ICER = \frac{\text{Lifetime costs (period III)} - \text{Lifetime costs (period II)}}{\text{QALYs (period III)} - \text{QALYs (period II)}}$$

We applied a health-sector perspective and a societal perspective. All prices reflected Swedish prices in year 2011 and were expressed in pound sterling (1GBP=10.4 SEK). Costs and health gains were discounted by 3% following Swedish health economic guidelines.¹⁷⁴ Survival data from all patients included was obtained from the national wide Swedish Cancer Registry and Cause of Death Registry. All patients were followed from date of diagnosis until death, emigration or end of follow up, December 31st 2009. Health-care costs for each therapy were

estimated from Swedish clinical practice, following the Swedish guidelines. We included resources as blood tests, bone marrow tests, chromosomal analyses, qRT-PCR, allogeneic SCT, special visits, inpatient days, and costs for the drugs (busulphan, IFN, hydroxyurea and imatinib) and finally care related to BP. According to Swedish health economic guidelines, economic evaluations should also consider the effect of net consumption (total consumption minus total production) from increased survival.¹⁷⁴ The health-sector perspective only includes health care costs while the societal perspective includes both health care costs and net consumption.

A recently published study by Mahon et al⁸² has suggested that imatinib may be successfully discontinued in a subpopulation of patients with excellent treatment response showing no PCR-detectable minimal residual disease. Furthermore, since the imatinib (Glivec®) patent in Sweden will expire in 2016, opening the market for biosimilars, it is estimated that the overall drug costs for CML may then be reduced by approximately 30-80%. To compute these future perspective we also analysed two different, possible upcoming scenarios A) Discontinuation of imatinib and B) Price reduction of imatinib.

6.2 RESULTS AND DISCUSSION

We observed substantial health gains over time, paralleled by increased treatment costs. The mean survival was 2.9, 9.2 and 18.5 years during periods I-III, respectively. The resulting ICER was £45 700 per QALY gained comparing periods III and II using a societal perspective and a similar result adopting the limited health-sector perspective. In a separate analysis by age groups showed lower ICERs for individuals <50 years at diagnosis: £38 500 for the societal perspective and £47 700 per QALY gained for the health-sector perspective. Since the prevalence of CML patients is increasing and assuming that 75% of each incident cohort was to receive imatinib at current prices, the imatinib budget would need to double by 2050. A future potential discontinuation of imatinib for selected excellent responders would reduce the ICER per QALY gained. Reduced drug cost of imatinib linked to the patent expiry of Glivec will probably have a greater impact of ICER per QALY. An estimated price reduction of 80% (global competition) or 30% (expected change for biological drugs) would be associated with an ICER of £20 000 and £36 000, respectively, per QALY gained.

Our study focused on imatinib treated patients. However, imatinib has for the last 5 years gradually been replaced by 2nd generation TKIs for many patients, partly as second line treatment because of intolerance or resistance to imatinib and partly as first line treatment, as trials have shown that these drugs provide a faster and deeper molecular response. This change in prescribing pattern is not taken into account in this analysis.

Nevertheless these health economic analyses reveal a dramatically prolonged survival for CML patients during four decades of development, paralleled by incremental cost-effectiveness ratios at levels generally accepted by some, but not all Western national health authorities.

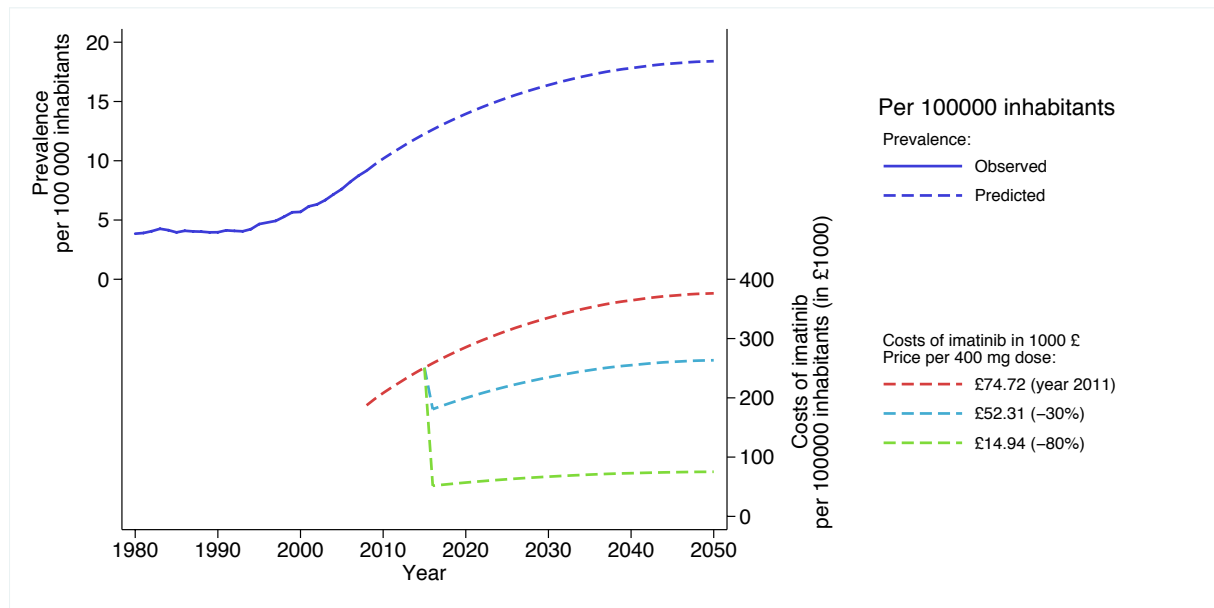


Figure 8. Prevalence of CML per 100 000 inhabitants year 1980-2050 and the predicted drug costs for imatinib years 2008-2050 using three levels after patent expire in year 2016.

7 SUMMARY AND CONCLUSIONS

I

Our landmark data indicate that ES-FISH may be used already after 3 months of imatinib treatment, to identify a patient cohort with inferior long-term EFS. From our data FISH appears to be more sensitive than PCR. The observation that PCR did not give the predictive values as other groups have found, may be explained by the fact that we did not use the IS. Of patients with FISH levels < 10% after 3 months of imatinib treatment 95% achieved CCyR within 12 months and 100% had an event free survival at 48 months. FISH can effectively be used in the early assessment of remaining Ph-positive cells to identify patients at risk for a long-term non-optimal response to imatinib.

II

Neutrophils from CML patients showed an increased expression and activity of LTC₄S. In vivo treatment with imatinib normalized this pattern. This normalization occurred faster than the cytogenetic response. The observation indicates that expression and activity of LTC₄S may be a down-stream step in the signal transduction events initiated by the Bcr-Abl tyrosine kinase. It is possible that an early evaluation of LTC₄S expression during imatinib treatment could be a more rapid way of assessing treatment response than by conventional methods identifying BCR-ABL expression (through CBA, FISH or qRT-PCR).

III

Survival in CML has improved significantly since the 1970s. In all calendar periods, age was a strong predictor of survival, with superior survival for the youngest patients.

In analyses including age and period of diagnosis, RS improved with calendar period in all age groups, but most pronounced in patients younger than 79 years of age, particular those 70-79 years of age. We observed a moderate but statistically significant better survival for women, when adjusted for age and calendar period.

The improvement of survival started 1987-1993. Major contributing factor to the improvement observed were an increasing number of allogeneic SCT, the introduction of IFN, better supportive care and more aggressive treatment in both chronic and accelerated phases.

Survival among all age groups was greatest in the last calendar period, but patients older than 79 still do poorly. The Swedish CML registry data shows that patients diagnosed 2002-2008, 70-79 years old received TKIs in 66% and patients >80 years in only 18%. This observation has resulted in an increased use of the TKIs in elderly patients. A recent report from the CML registry, reveals that the primary use of imatinib in patients >80 years diagnosed 2007-2010 has increased to 72%. This shows an attitude change in the approach to treatment of CML in elderly individuals.

IV

Substantial health gains were noted over the three calendar periods (I: 1973-1979, II: 1991-1997, and III: 2002-2008), paralleled by increased treatment costs. The mean survival was 2.9,

9.2 and 18.5 years during periods I-III. The health economic analyses reveal dramatically prolonged survival for CML patients during the four decades, with incremental cost-effectiveness ratios at levels generally accepted by Swedish and some but not all Western national health authorities.

8 ACKNOWLEDGEMENTS

To my own surprise I finished this thesis, but it would not have been possible without help and support of many important persons around me. In particular I wish to thank:

Leif Stenke, my main supervisor, for sharing your enormous knowledge of CML with me. For never giving up on me when I was grumpy... you are such an encouraging person. For evening- and weekend-meetings, working on this project. For all the fun we have and together with others, making music together.

Robert Hast, my co-supervisor and former main supervisor. You hooked me up on hematology and introduced me into the world of research and learned me everything worth knowing about being a hematologist. You have been such a great guide.

Magnus Björkholm my co-supervisor, for sharing your vast knowledge, for support, encouragement and for guiding me in this thesis fight.

Ingrid Arvidsson for teaching me about FISH and for being a great co-author and friend.

Martin Höglund, Johan Richter, Ola Landgren, Malin Hulterantz, Janne Sjöberg, Susanne Widell, Maria Kumlin, Jan Åke Lindgren, Gisela Barbany, Susanne Tornhamre and especially Cecilia Roos, Adam Lundqvist and Katarina Steen Carlsson, my co-authors for great discussions and great collaboration.

Paul Dickman, Sandra Eloranta, Therese Andersson my co-authors, for invaluable statistical discussions and work.

Per Ljungman and Viktoria Hjalmar for providing an environment where it is possible to combine research and clinical work.

Ana Petrescu who conjured with the schedule, letting me do my research when I needed and for all the laughs (especially when talking about everyday experiences).

Pelle Bernell my clinical tutor, for all encouragement and trusts you have been given me over the years and for great friendship.

Åsa Derolf, my co-author, for your practical advice, how to finish this project.

Sigurdur Yngvi Kristinsson, my co-author for guiding me in to the world of RSRs.

Olga Stromberg, my roommate, for being such a good example of being a doctor and a great friend. You are bringing joy!

All my colleagues and friends at Division of Hematology, for great collaboration, genuine friendship, fruitful discussions and social activities. It is such a privilege working together with dedicated people.

Harriet Ryblom, the perfect study nurse, for great collaboration and for reminding me of all kind of stuff.

Ninni Petersen for all super-secretarial help, always being one step ahead!

Members of the Swedish CML Group and the Nordic CML Study Group, for all exciting collaboration in clinical research.

All CML patients, for participating in our studies and thus contribute to increase the knowledge of CML.

My friends, for just being there in good and bad times and finally to

My warm-hearted beloved family, for everything. This thesis is dedicated to you.

9 REFERENCES

1. Degos L: John Hughes Bennett, Rudolph Virchow... and Alfred Donne: the first description of leukemia. The hematology journal : the official journal of the European Haematology Association / EHA 2:1, 2001
2. Seufert W, Seufert WD: The recognition of leukemia as a systemic disease. Journal of the history of medicine and allied sciences 37:34-50, 1982
3. E. N: Uber myelogene leukemia. Berliner Klinische Wochenschrift 15:69-72, 1878
4. Nowell PC, Hungerford DA: Chromosome studies on normal and leukemic human leukocytes. Journal of the National Cancer Institute 25:85-109, 1960
5. Rowley JD: Letter: A new consistent chromosomal abnormality in chronic myelogenous leukaemia identified by quinacrine fluorescence and Giemsa staining. Nature 243:290-3, 1973
6. Bartram CR, de Klein A, Hagemeijer A, et al: Translocation of c-abl oncogene correlates with the presence of a Philadelphia chromosome in chronic myelocytic leukaemia. Nature 306:277-80, 1983
7. Groffen J, Stephenson JR, Heisterkamp N, et al: Philadelphia chromosomal breakpoints are clustered within a limited region, bcr, on chromosome 22. Cell 36:93-9, 1984
8. Shtivelman E, Lifshitz B, Gale RP, et al: Fused transcript of abl and bcr genes in chronic myelogenous leukaemia. Nature 315:550-4, 1985
9. Daley GQ, Van Etten RA, Baltimore D: Induction of chronic myelogenous leukemia in mice by the P210bcr/abl gene of the Philadelphia chromosome. Science 247:824-30, 1990
10. Wedelin C, Bjorkholm M, Mellstedt H, et al: Clinical findings and prognostic factors in chronic myeloid leukemias. Acta medica Scandinavica 220:255-60, 1986
11. Goldman JM, Melo JV: Chronic myeloid leukemia--advances in biology and new approaches to treatment. The New England journal of medicine 349:1451-64, 2003
12. Hehlmann R, Berger U, Pfirrmann M, et al: Randomized comparison of interferon alpha and hydroxyurea with hydroxyurea monotherapy in chronic myeloid leukemia (CML-study II): prolongation of survival by the combination of interferon alpha and hydroxyurea. Leukemia : official journal of the Leukemia Society of America, Leukemia Research Fund, U.K 17:1529-37, 2003
13. Baccarani M, Russo D, Rosti G, et al: Interferon-alfa for chronic myeloid leukemia. Seminars in hematology 40:22-33, 2003
14. Garcia-Manero G, Faderl S, O'Brien S, et al: Chronic myelogenous leukemia: a review and update of therapeutic strategies. Cancer 98:437-57, 2003
15. Olsson-Stromberg U, Simonsson B, Ahlgren T, et al: Comparison of busulphan, hydroxyurea and allogeneic bone marrow transplantation (BMT) in chronic myeloid leukaemia: BMT prolongs survival. The hematology journal : the official journal of the European Haematology Association / EHA 5:462-6, 2004
16. Simonsson B, Oberg G, Bjoreman M, et al: Intensive treatment in order to minimize the Ph-positive clone in CML. Danish-Swedish CML Group. Bone marrow transplantation 17 Suppl 3:S63-4, 1996

17. Axdorff U, Stenke L, Grimfors G, et al: Intensive chemotherapy in patients with chronic myelogenous leukaemia (CML) in accelerated or blastic phase--a report from the Swedish CML Group. *British journal of haematology* 118:1048-54, 2002
18. Takahashi N, Miura I, Saitoh K, et al: Lineage involvement of stem cells bearing the philadelphia chromosome in chronic myeloid leukemia in the chronic phase as shown by a combination of fluorescence-activated cell sorting and fluorescence in situ hybridization. *Blood* 92:4758-63, 1998
19. Coulombel L, Kalousek DK, Eaves CJ, et al: Long-term marrow culture reveals chromosomally normal hematopoietic progenitor cells in patients with Philadelphia chromosome-positive chronic myelogenous leukemia. *The New England journal of medicine* 308:1493-8, 1983
20. Petzer AL, Eaves CJ, Lansdorp PM, et al: Characterization of primitive subpopulations of normal and leukemic cells present in the blood of patients with newly diagnosed as well as established chronic myeloid leukemia. *Blood* 88:2162-71, 1996
21. Vardiman JW, Thiele J, Arber DA, et al: The 2008 revision of the World Health Organization (WHO) classification of myeloid neoplasms and acute leukemia: rationale and important changes. *Blood* 114:937-51, 2009
22. Jaffe ES, Harris NL, Diebold J, et al: World Health Organization classification of neoplastic diseases of the hematopoietic and lymphoid tissues. A progress report. *American journal of clinical pathology* 111:S8-12, 1999
23. Akel S, Kolialexi A, Mavrou A, et al: Evaluation at single cell level of residual Philadelphia negative hemopoietic stem cells in chronic phase CML patients. *Cancer genetics and cytogenetics* 122:93-100, 2000
24. Akel S, Kolialexi A, Mavrou A, et al: Efficiency of interphase fluorescence in situ hybridization for BCR/ABL on peripheral blood smears for monitoring of CML patients: a comparison with bone marrow findings. *Clinical and laboratory haematology* 24:361-7, 2002
25. Landstrom AP, Ketterling RP, Knudson RA, et al: Utility of peripheral blood dual color, double fusion fluorescent in situ hybridization for BCR/ABL fusion to assess cytogenetic remission status in chronic myeloid leukemia. *Leukemia & lymphoma* 47:2055-61, 2006
26. Le Gouill S, Talmant P, Milpied N, et al: Fluorescence in situ hybridization on peripheral-blood specimens is a reliable method to evaluate cytogenetic response in chronic myeloid leukemia. *Journal of clinical oncology : official journal of the American Society of Clinical Oncology* 18:1533-8, 2000
27. Duba HC, Hilbe W, Mehringer A, et al: Hypermetaphase and interphase fluorescence in situ hybridisation for monitoring of remission status in Philadelphia chromosome positive chronic myeloid leukaemia. *International journal of oncology* 17:1245-9, 2000
28. Schoch C, Schnittger S, Bursch S, et al: Comparison of chromosome banding analysis, interphase- and hypermetaphase-FISH, qualitative and quantitative PCR for diagnosis and for follow-up in chronic myeloid leukemia: a study on 350 cases. *Leukemia : official journal of the Leukemia Society of America, Leukemia Research Fund, U.K* 16:53-9, 2002
29. Testoni N, Marzocchi G, Luatti S, et al: Chronic myeloid leukemia: a prospective comparison of interphase fluorescence in situ hybridization and chromosome banding analysis for the definition of complete cytogenetic response: a study of the GIMEMA CML WP. *Blood* 114:4939-43, 2009

30. Cross NC: Minimal residual disease in chronic myeloid leukaemia. *Hematology and cell therapy* 40:224-8, 1998
31. Hughes T, Deininger M, Hochhaus A, et al: Monitoring CML patients responding to treatment with tyrosine kinase inhibitors: review and recommendations for harmonizing current methodology for detecting BCR-ABL transcripts and kinase domain mutations and for expressing results. *Blood* 108:28-37, 2006
32. Hughes TP, Kaeda J, Branford S, et al: Frequency of major molecular responses to imatinib or interferon alfa plus cytarabine in newly diagnosed chronic myeloid leukemia. *The New England journal of medicine* 349:1423-32, 2003
33. Branford S, Fletcher L, Cross NC, et al: Desirable performance characteristics for BCR-ABL measurement on an international reporting scale to allow consistent interpretation of individual patient response and comparison of response rates between clinical trials. *Blood* 112:3330-8, 2008
34. Kantarjian H, Sawyers C, Hochhaus A, et al: Hematologic and cytogenetic responses to imatinib mesylate in chronic myelogenous leukemia. *The New England journal of medicine* 346:645-52, 2002
35. Kantarjian HM, Talpaz M, Giles F, et al: New insights into the pathophysiology of chronic myeloid leukemia and imatinib resistance. *Annals of internal medicine* 145:913-23, 2006
36. Chase A, Huntly BJ, Cross NC: Cytogenetics of chronic myeloid leukaemia. *Best practice & research. Clinical haematology* 14:553-71, 2001
37. Baccarani M, Saglio G, Goldman J, et al: Evolving concepts in the management of chronic myeloid leukemia: recommendations from an expert panel on behalf of the European LeukemiaNet. *Blood* 108:1809-20, 2006
38. Network NCC, <http://www.ncc.org>
39. Saikia T, Advani S, Dasgupta A, et al: Characterisation of blast cells during blastic phase of chronic myeloid leukaemia by immunophenotyping--experience in 60 patients. *Leukemia research* 12:499-506, 1988
40. Khalidi HS, Brynes RK, Medeiros LJ, et al: The immunophenotype of blast transformation of chronic myelogenous leukemia: a high frequency of mixed lineage phenotype in "lymphoid" blasts and A comparison of morphologic, immunophenotypic, and molecular findings. *Modern pathology : an official journal of the United States and Canadian Academy of Pathology, Inc* 11:1211-21, 1998
41. Nair C, Chopra H, Shinde S, et al: Immunophenotype and ultrastructural studies in blast crisis of chronic myeloid leukemia. *Leukemia & lymphoma* 19:309-13, 1995
42. Derderian PM, Kantarjian HM, Talpaz M, et al: Chronic myelogenous leukemia in the lymphoid blastic phase: characteristics, treatment response, and prognosis. *The American journal of medicine* 94:69-74, 1993
43. O'Brien S, Abboud CN, Akhtari M, et al: Chronic myelogenous leukemia. *Journal of the National Comprehensive Cancer Network : JNCCN* 10:64-110, 2012
44. Ilaria RL, Jr.: Pathobiology of lymphoid and myeloid blast crisis and management issues. *Hematology / the Education Program of the American Society of Hematology. American Society of Hematology. Education Program*:188-94, 2005
45. Sokal JE, Cox EB, Baccarani M, et al: Prognostic discrimination in "good-risk" chronic granulocytic leukemia. *Blood* 63:789-99, 1984

46. Hochhaus A, O'Brien SG, Guilhot F, et al: Six-year follow-up of patients receiving imatinib for the first-line treatment of chronic myeloid leukemia. *Leukemia : official journal of the Leukemia Society of America, Leukemia Research Fund, U.K* 23:1054-61, 2009
47. Hasford J, Pfirrmann M, Hehlmann R, et al: A new prognostic score for survival of patients with chronic myeloid leukemia treated with interferon alfa. Writing Committee for the Collaborative CML Prognostic Factors Project Group. *Journal of the National Cancer Institute* 90:850-8, 1998
48. Hasford J, Baccarani M, Hoffmann V, et al: Predicting complete cytogenetic response and subsequent progression-free survival in 2060 patients with CML on imatinib treatment: the EUTOS score. *Blood* 118:686-92, 2011
49. Baccarani M, Cortes J, Pane F, et al: Chronic myeloid leukemia: an update of concepts and management recommendations of European LeukemiaNet. *Journal of clinical oncology : official journal of the American Society of Clinical Oncology* 27:6041-51, 2009
50. Young JL, Jr., Percy CL, Asire AJ, et al: Cancer incidence and mortality in the United States, 1973-77. *National Cancer Institute monograph*:1-187, 1981
51. Faderl S, Talpaz M, Estrov Z, et al: Chronic myelogenous leukemia: biology and therapy. *Annals of internal medicine* 131:207-19, 1999
52. Cancercentrum HMR: Redovisning av material 2002-2010, Blodcancerregistret, Nationellt register för Kronisk Myeloisk Leukemi (KML).2011
53. Höglund: Nationellt Register för kronisk Myeloisk Leukemi Rapport nr 5, <http://www.roc.se/hematologi/KML>, 2011
54. Rohrbacher M, Hasford J: Epidemiology of chronic myeloid leukaemia (CML). Best practice & research. *Clinical haematology* 22:295-302, 2009
55. Hehlmann R, Hochhaus A, Baccarani M: Chronic myeloid leukaemia. *Lancet* 370:342-50, 2007
56. Deininger MW, Bose S, Gora-Tybor J, et al: Selective induction of leukemia-associated fusion genes by high-dose ionizing radiation. *Cancer research* 58:421-5, 1998
57. Moloney WC: Radiogenic leukemia revisited. *Blood* 70:905-8, 1987
58. Tanaka K, Takechi M, Hong J, et al: 9;22 translocation and bcr rearrangements in chronic myelocytic leukemia patients among atomic bomb survivors. *Journal of radiation research* 30:352-8, 1989
59. Corso A, Lazzarino M, Morra E, et al: Chronic myelogenous leukemia and exposure to ionizing radiation--a retrospective study of 443 patients. *Annals of hematology* 70:79-82, 1995
60. UNSCEAR: Health effects due to radiation from Chernobyl accident., in radiation UUNSCoEoA (ed), 2011
61. Kozubek S, Lukasova E, Ryznar L, et al: Distribution of ABL and BCR genes in cell nuclei of normal and irradiated lymphocytes. *Blood* 89:4537-45, 1997
62. Neves H, Ramos C, da Silva MG, et al: The nuclear topography of ABL, BCR, PML, and RARalpha genes: evidence for gene proximity in specific phases of the cell cycle and stages of hematopoietic differentiation. *Blood* 93:1197-207, 1999

63. Saglio G, Storlazzi CT, Giugliano E, et al: A 76-kb duplicon maps close to the BCR gene on chromosome 22 and the ABL gene on chromosome 9: possible involvement in the genesis of the Philadelphia chromosome translocation. *Proceedings of the National Academy of Sciences of the United States of America* 99:9882-7, 2002
64. Bose S, Deininger M, Gora-Tybor J, et al: The presence of typical and atypical BCR-ABL fusion genes in leukocytes of normal individuals: biologic significance and implications for the assessment of minimal residual disease. *Blood* 92:3362-7, 1998
65. Biernaux C, Sels A, Huez G, et al: Very low level of major BCR-ABL expression in blood of some healthy individuals. *Bone marrow transplantation* 17 Suppl 3:S45-7, 1996
66. Posthuma EF, Falkenburg JH, Apperley JF, et al: HLA-B8 and HLA-A3 coexpressed with HLA-B8 are associated with a reduced risk of the development of chronic myeloid leukemia. *The Chronic Leukemia Working Party of the EBMT. Blood* 93:3863-5, 1999
67. Deininger MW, Goldman JM, Melo JV: The molecular biology of chronic myeloid leukemia. *Blood* 96:3343-56, 2000
68. Fialkow PJ, Jacobson RJ, Papayannopoulou T: Chronic myelocytic leukemia: clonal origin in a stem cell common to the granulocyte, erythrocyte, platelet and monocyte/macrophage. *The American journal of medicine* 63:125-30, 1977
69. Heisterkamp N, Stam K, Groffen J, et al: Structural organization of the bcr gene and its role in the Ph¹ translocation. *Nature* 315:758-61, 1985
70. Sawyers CL, McLaughlin J, Goga A, et al: The nuclear tyrosine kinase c-Abl negatively regulates cell growth. *Cell* 77:121-31, 1994
71. Apperley JF: Part I: mechanisms of resistance to imatinib in chronic myeloid leukaemia. *The lancet oncology* 8:1018-29, 2007
72. Cohen GB, Ren R, Baltimore D: Modular binding domains in signal transduction proteins. *Cell* 80:237-48, 1995
73. ABL1 c-abl oncogene 1, non-receptor tyrosine kinase [homo sapiens], NCBI 2013
74. Sawyers CL: Chronic myeloid leukemia. *The New England journal of medicine* 340:1330-40, 1999
75. Pasternak G, Hochhaus A, Schultheis B, et al: Chronic myelogenous leukemia: molecular and cellular aspects. *Journal of cancer research and clinical oncology* 124:643-60, 1998
76. Johansson B, Fioretos T, Mitelman F: Cytogenetic and molecular genetic evolution of chronic myeloid leukemia. *Acta haematologica* 107:76-94, 2002
77. O'Brien SG, Guilhot F, Larson RA, et al: Imatinib compared with interferon and low-dose cytarabine for newly diagnosed chronic-phase chronic myeloid leukemia. *The New England journal of medicine* 348:994-1004, 2003
78. Allan NC, Richards SM, Shepherd PC: UK Medical Research Council randomised, multicentre trial of interferon-alpha n1 for chronic myeloid leukaemia: improved survival irrespective of cytogenetic response. *The UK Medical Research Council's Working Parties for Therapeutic Trials in Adult Leukaemia. Lancet* 345:1392-7, 1995
79. Deininger M OBS, Guilhot F, et al.: International randomized study of interferon vs STI571 (IRIS) 8-year follow up: sustained survival and low risk for progression or

event in chronic phase (CML-CP) treated with imatinib [Abstract]. Blood 114:1126, 2009

80. Kantarjian H, O'Brien S, Jabbour E, et al: Improved survival in chronic myeloid leukemia since the introduction of imatinib therapy: a single-institution historical experience. Blood 119:1981-7, 2012
81. Rousselot P, Huguet F, Rea D, et al: Imatinib mesylate discontinuation in patients with chronic myelogenous leukemia in complete molecular remission for more than 2 years. Blood 109:58-60, 2007
82. Mahon FX, Rea D, Guilhot J, et al: Discontinuation of imatinib in patients with chronic myeloid leukaemia who have maintained complete molecular remission for at least 2 years: the prospective, multicentre Stop Imatinib (STIM) trial. The lancet oncology 11:1029-35, 2010
83. Schindler T, Bornmann W, Pellicena P, et al: Structural mechanism for STI-571 inhibition of abelson tyrosine kinase. Science 289:1938-42, 2000
84. Buchdunger E, Zimmermann J, Mett H, et al: Inhibition of the Abl protein-tyrosine kinase in vitro and in vivo by a 2-phenylaminopyrimidine derivative. Cancer research 56:100-4, 1996
85. Buchdunger E, Cioffi CL, Law N, et al: Abl protein-tyrosine kinase inhibitor STI571 inhibits in vitro signal transduction mediated by c-kit and platelet-derived growth factor receptors. The Journal of pharmacology and experimental therapeutics 295:139-45, 2000
86. Druker BJ, Lydon NB: Lessons learned from the development of an abl tyrosine kinase inhibitor for chronic myelogenous leukemia. The Journal of clinical investigation 105:3-7, 2000
87. Deininger MW, O'Brien SG, Ford JM, et al: Practical management of patients with chronic myeloid leukemia receiving imatinib. Journal of clinical oncology : official journal of the American Society of Clinical Oncology 21:1637-47, 2003
88. Mauro MJ, Deininger MW: Management of drug toxicities in chronic myeloid leukaemia. Best practice & research. Clinical haematology 22:409-29, 2009
89. Marin D, Marktel S, Bua M, et al: The use of imatinib (STI571) in chronic myeloid leukemia: some practical considerations. Haematologica 87:979-88, 2002
90. Bummig P, Andersson J, Meis-Kindblom JM, et al: Neoadjuvant, adjuvant and palliative treatment of gastrointestinal stromal tumours (GIST) with imatinib: a centre-based study of 17 patients. British journal of cancer 89:460-4, 2003
91. Dematteo RP, Ballman KV, Antonescu CR, et al: Adjuvant imatinib mesylate after resection of localised, primary gastrointestinal stromal tumour: a randomised, double-blind, placebo-controlled trial. Lancet 373:1097-104, 2009
92. Jonsson S, Lewerin C, Jacobsson S, et al: [Hypereosinophilic syndrome--difficult-to-catch diagnosis. Targeted molecular diagnostics and treatment now possible thanks to gene discovery]. Lakartidningen 103:2556-9, 2006
93. Bain BJ: Eosinophilic leukemia and idiopathic hypereosinophilic syndrome are mutually exclusive diagnoses. Blood 104:3836; author reply 3836-7, 2004
94. Coutre S, Gotlib J: Targeted treatment of hypereosinophilic syndromes and chronic eosinophilic leukemias with imatinib mesylate. Seminars in cancer biology 14:23-31, 2004

95. Pardanani A, Tefferi A: Imatinib therapy for hypereosinophilic syndrome and eosinophilia-associated myeloproliferative disorders. *Leukemia research* 28 Suppl 1:S47-52, 2004
96. Abrams TA, Schuetze SM: Targeted therapy for dermatofibrosarcoma protuberans. *Current oncology reports* 8:291-6, 2006
97. Towatari M, Yanada M, Usui N, et al: Combination of intensive chemotherapy and imatinib can rapidly induce high-quality complete remission for a majority of patients with newly diagnosed BCR-ABL-positive acute lymphoblastic leukemia. *Blood* 104:3507-12, 2004
98. Thomas DA, Faderl S, Cortes J, et al: Treatment of Philadelphia chromosome-positive acute lymphocytic leukemia with hyper-CVAD and imatinib mesylate. *Blood* 103:4396-407, 2004
99. Ottmann OG, Pfeifer H: Management of Philadelphia chromosome-positive acute lymphoblastic leukemia (Ph+ ALL). *Hematology / the Education Program of the American Society of Hematology. American Society of Hematology. Education Program*:371-81, 2009
100. Soupir CP, Vergilio JA, Dal Cin P, et al: Philadelphia chromosome-positive acute myeloid leukemia: a rare aggressive leukemia with clinicopathologic features distinct from chronic myeloid leukemia in myeloid blast crisis. *American journal of clinical pathology* 127:642-50, 2007
101. Hochhaus A: Molecular response and BCR-ABL reductions in patients with newly diagnosed chronic myeloid leukemia in chronic phase receiving dasatinib versus imatinib: Dasision 3-Year Follow-up. Atlanta USA, ASH meeting 2012, 2012
102. Porkka K, Khoury HJ, Paquette RL, et al: Dasatinib 100 mg once daily minimizes the occurrence of pleural effusion in patients with chronic myeloid leukemia in chronic phase and efficacy is unaffected in patients who develop pleural effusion. *Cancer* 116:377-86, 2010
103. Apperley JF, Cortes JE, Kim DW, et al: Dasatinib in the treatment of chronic myeloid leukemia in accelerated phase after imatinib failure: the START a trial. *Journal of clinical oncology : official journal of the American Society of Clinical Oncology* 27:3472-9, 2009
104. Shah NP, Kim DW, Kantarjian H, et al: Potent, transient inhibition of BCR-ABL with dasatinib 100 mg daily achieves rapid and durable cytogenetic responses and high transformation-free survival rates in chronic phase chronic myeloid leukemia patients with resistance, suboptimal response or intolerance to imatinib. *Haematologica* 95:232-40, 2010
105. Cortes J, Rousselot P, Kim DW, et al: Dasatinib induces complete hematologic and cytogenetic responses in patients with imatinib-resistant or -intolerant chronic myeloid leukemia in blast crisis. *Blood* 109:3207-13, 2007
106. Hochhaus A, Kantarjian HM, Baccarani M, et al: Dasatinib induces notable hematologic and cytogenetic responses in chronic-phase chronic myeloid leukemia after failure of imatinib therapy. *Blood* 109:2303-9, 2007
107. Mustjoki S, Auvinen K, Kreutzman A, et al: Rapid mobilization of cytotoxic lymphocytes induced by dasatinib therapy. *Leukemia : official journal of the Leukemia Society of America, Leukemia Research Fund, U.K.*, 2012

108. de Lavallade H, Punjialingam S, Milojkovic D, et al: Pleural effusions in patients with chronic myeloid leukaemia treated with dasatinib may have an immune-mediated pathogenesis. *British journal of haematology* 141:745-7, 2008
109. Saglio G, Kim DW, Issaragrisil S, et al: Nilotinib versus imatinib for newly diagnosed chronic myeloid leukemia. *The New England journal of medicine* 362:2251-9, 2010
110. Larson RA, Hochhaus A, Hughes TP, et al: Nilotinib vs imatinib in patients with newly diagnosed Philadelphia chromosome-positive chronic myeloid leukemia in chronic phase: ENESTnd 3-year follow-up. *Leukemia : official journal of the Leukemia Society of America, Leukemia Research Fund, U.K* 26:2302, 2012
111. Kantarjian H: Enestnd 4-Year (y) Update: Continued Superiority of Nilotinib Vs Imatinib in Patients (pts) with Newly Diagnosed Philadelphia Chromosome-Positive (Ph+) Chronic Myeloid Leukemia in Chronic Phase (CML-CP). Atlanta, 2012
112. Deremer DL, Ustun C, Natarajan K: Nilotinib: a second-generation tyrosine kinase inhibitor for the treatment of chronic myelogenous leukemia. *Clinical therapeutics* 30:1956-75, 2008
113. Hantschel O, Rix U, Superti-Furga G: Target spectrum of the BCR-ABL inhibitors imatinib, nilotinib and dasatinib. *Leukemia & lymphoma* 49:615-9, 2008
114. Rix U, Hantschel O, Durnberger G, et al: Chemical proteomic profiles of the BCR-ABL inhibitors imatinib, nilotinib, and dasatinib reveal novel kinase and nonkinase targets. *Blood* 110:4055-63, 2007
115. Palandri F, Castagnetti F, Testoni N, et al: Chronic myeloid leukemia in blast crisis treated with imatinib 600 mg: outcome of the patients alive after a 6-year follow-up. *Haematologica* 93:1792-6, 2008
116. Ljungman P, Bregni M, Brune M, et al: Allogeneic and autologous transplantation for haematological diseases, solid tumours and immune disorders: current practice in Europe 2009. *Bone marrow transplantation* 45:219-34, 2010
117. Copelan EA, Crilley PA, Szer J, et al: Late mortality and relapse following BuCy2 and HLA-identical sibling marrow transplantation for chronic myelogenous leukemia. *Biology of blood and marrow transplantation : journal of the American Society for Blood and Marrow Transplantation* 15:851-5, 2009
118. Kiss TL, Abdolell M, Jamal N, et al: Long-term medical outcomes and quality-of-life assessment of patients with chronic myeloid leukemia followed at least 10 years after allogeneic bone marrow transplantation. *Journal of clinical oncology : official journal of the American Society of Clinical Oncology* 20:2334-43, 2002
119. Guilhot F, Apperley J, Kim DW, et al: Dasatinib induces significant hematologic and cytogenetic responses in patients with imatinib-resistant or -intolerant chronic myeloid leukemia in accelerated phase. *Blood* 109:4143-50, 2007
120. Kantarjian HM, Giles F, Gattermann N, et al: Nilotinib (formerly AMN107), a highly selective BCR-ABL tyrosine kinase inhibitor, is effective in patients with Philadelphia chromosome-positive chronic myelogenous leukemia in chronic phase following imatinib resistance and intolerance. *Blood* 110:3540-6, 2007
121. Cortes J, Kim DW, Raffoux E, et al: Efficacy and safety of dasatinib in imatinib-resistant or -intolerant patients with chronic myeloid leukemia in blast phase. *Leukemia : official journal of the Leukemia Society of America, Leukemia Research Fund, U.K* 22:2176-83, 2008

122. le Coutre P, Ottmann OG, Giles F, et al: Nilotinib (formerly AMN107), a highly selective BCR-ABL tyrosine kinase inhibitor, is active in patients with imatinib-resistant or -intolerant accelerated-phase chronic myelogenous leukemia. *Blood* 111:1834-9, 2008
123. Hochhaus A, Baccarani M, Deininger M, et al: Dasatinib induces durable cytogenetic responses in patients with chronic myelogenous leukemia in chronic phase with resistance or intolerance to imatinib. *Leukemia : official journal of the Leukemia Society of America, Leukemia Research Fund, U.K* 22:1200-6, 2008
124. Tokarski JS, Newitt JA, Chang CY, et al: The structure of Dasatinib (BMS-354825) bound to activated ABL kinase domain elucidates its inhibitory activity against imatinib-resistant ABL mutants. *Cancer research* 66:5790-7, 2006
125. O'Hare T, Walters DK, Stoffregen EP, et al: In vitro activity of Bcr-Abl inhibitors AMN107 and BMS-354825 against clinically relevant imatinib-resistant Abl kinase domain mutants. *Cancer research* 65:4500-5, 2005
126. Branford S, Melo JV, Hughes TP: Selecting optimal second-line tyrosine kinase inhibitor therapy for chronic myeloid leukemia patients after imatinib failure: does the BCR-ABL mutation status really matter? *Blood* 114:5426-35, 2009
127. Branford S, Rudzki Z, Walsh S, et al: Detection of BCR-ABL mutations in patients with CML treated with imatinib is virtually always accompanied by clinical resistance, and mutations in the ATP phosphate-binding loop (P-loop) are associated with a poor prognosis. *Blood* 102:276-83, 2003
128. Santos FP, Kantarjian H, Quintas-Cardama A, et al: Evolution of therapies for chronic myelogenous leukemia. *Cancer journal* 17:465-76, 2011
129. Goldman JM: Initial treatment for patients with CML. *Hematology / the Education Program of the American Society of Hematology. American Society of Hematology. Education Program*:453-60, 2009
130. Druker BJ, Guilhot F, O'Brien SG, et al: Five-year follow-up of patients receiving imatinib for chronic myeloid leukemia. *The New England journal of medicine* 355:2408-17, 2006
131. de Lavallade H, Apperley JF, Khorashad JS, et al: Imatinib for newly diagnosed patients with chronic myeloid leukemia: incidence of sustained responses in an intention-to-treat analysis. *Journal of clinical oncology : official journal of the American Society of Clinical Oncology* 26:3358-63, 2008
132. Bonifazi F, de Vivo A, Rosti G, et al: Chronic myeloid leukemia and interferon-alpha: a study of complete cytogenetic responders. *Blood* 98:3074-81, 2001
133. Quintas-Cardama A, Kantarjian H, Jones D, et al: Delayed achievement of cytogenetic and molecular response is associated with increased risk of progression among patients with chronic myeloid leukemia in early chronic phase receiving high-dose or standard-dose imatinib therapy. *Blood* 113:6315-21, 2009
134. Roy L, Guilhot J, Krahne T, et al: Survival advantage from imatinib compared with the combination interferon-alpha plus cytarabine in chronic-phase chronic myelogenous leukemia: historical comparison between two phase 3 trials. *Blood* 108:1478-84, 2006
135. Marin D, Milojkovic D, Olavarria E, et al: European LeukemiaNet criteria for failure or suboptimal response reliably identify patients with CML in early chronic phase treated with imatinib whose eventual outcome is poor. *Blood* 112:4437-44, 2008

136. Rosti G, Palandri F, Castagnetti F, et al: Nilotinib for the frontline treatment of Ph(+) chronic myeloid leukemia. *Blood* 114:4933-8, 2009
137. Kantarjian H, Shah NP, Hochhaus A, et al: Dasatinib versus imatinib in newly diagnosed chronic-phase chronic myeloid leukemia. *The New England journal of medicine* 362:2260-70, 2010
138. gruppen SK: Nationella Riktlinjer för diagnostik och behandling av Kronisk Myeloisk Leukemi, 2012
139. Socialstyrelsen: Dödsorsaksstatistik, 2011
140. Socialstyrelsen: Cancerstatistik, 2011
141. Kim YR, Cho HI, Yoon SS, et al: Interpretation of submicroscopic deletions of the BCR or ABL gene should not depend on extra signal-FISH: problems in interpretation of submicroscopic deletion of the BCR or ABL gene with extra signal-FISH. *Genes, chromosomes & cancer* 43:37-44, 2005
142. Buno I, Wyatt WA, Zinsmeister AR, et al: A special fluorescent in situ hybridization technique to study peripheral blood and assess the effectiveness of interferon therapy in chronic myeloid leukemia. *Blood* 92:2315-21, 1998
143. Sinclair PB, Green AR, Grace C, et al: Improved sensitivity of BCR-ABL detection: a triple-probe three-color fluorescence in situ hybridization system. *Blood* 90:1395-402, 1997
144. Primo D, Tabernero MD, Rasillo A, et al: Patterns of BCR/ABL gene rearrangements by interphase fluorescence in situ hybridization (FISH) in BCR/ABL+ leukemias: incidence and underlying genetic abnormalities. *Leukemia : official journal of the Leukemia Society of America, Leukemia Research Fund, U.K* 17:1124-9, 2003
145. Najfeld V: High performance of the BCR/ABL-extra sensitive (ES) probe for detection of der(9q) deletion in t(9;22) (q34;q11.2). *Cancer genetics and cytogenetics* 132:171, 2002
146. Pelz AF, Kroning H, Franke A, et al: High reliability and sensitivity of the BCR/ABL1 D-FISH test for the detection of BCR/ABL rearrangements. *Annals of hematology* 81:147-53, 2002
147. Thorn I, Olsson-Stromberg U, Ohlsen C, et al: The impact of RNA stabilization on minimal residual disease assessment in chronic myeloid leukemia. *Haematologica* 90:1471-6, 2005
148. Beillard E, Pallisgaard N, van der Velden VH, et al: Evaluation of candidate control genes for diagnosis and residual disease detection in leukemic patients using 'real-time' quantitative reverse-transcriptase polymerase chain reaction (RQ-PCR) - a Europe against cancer program. *Leukemia : official journal of the Leukemia Society of America, Leukemia Research Fund, U.K* 17:2474-86, 2003
149. Gabert J, Beillard E, van der Velden VH, et al: Standardization and quality control studies of 'real-time' quantitative reverse transcriptase polymerase chain reaction of fusion gene transcripts for residual disease detection in leukemia - a Europe Against Cancer program. *Leukemia : official journal of the Leukemia Society of America, Leukemia Research Fund, U.K* 17:2318-57, 2003
150. Kaplan AP, Meier HL, Mandle R, Jr.: The Hageman factor dependent pathways of coagulation, fibrinolysis, and kinin-generation. *Seminars in thrombosis and hemostasis* 3:1-26, 1976

151. Marin D, Ibrahim AR, Lucas C, et al: Assessment of BCR-ABL1 transcript levels at 3 months is the only requirement for predicting outcome for patients with chronic myeloid leukemia treated with tyrosine kinase inhibitors. *Journal of clinical oncology : official journal of the American Society of Clinical Oncology* 30:232-8, 2012
152. Hanfstein B, Muller MC, Hehlmann R, et al: Early molecular and cytogenetic response is predictive for long-term progression-free and overall survival in chronic myeloid leukemia (CML). *Leukemia : official journal of the Leukemia Society of America, Leukemia Research Fund, U.K* 26:2096-102, 2012
153. Simonsson B, Kloke O, Stahel RA: ESMO Minimum Clinical Recommendations for the diagnosis, treatment and follow-up of chronic myelogenous leukemia (CML). *Annals of oncology : official journal of the European Society for Medical Oncology / ESMO* 16 Suppl 1:i52-3, 2005
154. Hehlmann R, Ansari H, Hasford J, et al: Comparative analysis of the impact of risk profile and of drug therapy on survival in CML using Sokal's index and a new score. German chronic myeloid leukaemia (CML)-Study Group. *British journal of haematology* 97:76-85, 1997
155. Rinaldo-Matthis A, Haeggstrom JZ: Structures and mechanisms of enzymes in the leukotriene cascade. *Biochimie* 92:676-81, 2010
156. Peck MJ, Piper PJ, Williams TJ: The effect of leukotrienes C4 and D4 on the microvasculature of guinea-pig skin. *Prostaglandins* 21:315-21, 1981
157. Dahlen SE, Bjork J, Hedqvist P, et al: Leukotrienes promote plasma leakage and leukocyte adhesion in postcapillary venules: in vivo effects with relevance to the acute inflammatory response. *Proceedings of the National Academy of Sciences of the United States of America* 78:3887-91, 1981
158. Marom Z, Shelhamer JH, Bach MK, et al: Slow-reacting substances, leukotrienes C4 and D4, increase the release of mucus from human airways in vitro. *The American review of respiratory disease* 126:449-51, 1982
159. Funk CD: Prostaglandins and leukotrienes: advances in eicosanoid biology. *Science* 294:1871-5, 2001
160. Stenke L, Mansour M, Reizenstein P, et al: Stimulation of human myelopoiesis by leukotrienes B4 and C4: interactions with granulocyte-macrophage colony-stimulating factor. *Blood* 81:352-6, 1993
161. Stenke L, Samuelsson J, Palmblad J, et al: Elevated white blood cell synthesis of leukotriene C4 in chronic myelogenous leukaemia but not in polycythaemia vera. *British journal of haematology* 74:257-63, 1990
162. Tornhamre S, Stenke L, Granzelius A, et al: Inverse relationship between myeloid maturation and leukotriene C4 synthase expression in normal and leukemic myelopoiesis-consistent overexpression of the enzyme in myeloid cells from patients with chronic myeloid leukemia. *Experimental hematology* 31:122-30, 2003
163. Sjolinder M, Stenke L, Nasman-Glaser B, et al: Aberrant expression of active leukotriene C(4) synthase in CD16(+) neutrophils from patients with chronic myeloid leukemia. *Blood* 95:1456-64, 2000
164. Chen L: The Alox5 gene is a novel therapeutic target incancer stem cells of chronic myeloid leukemia. *Cell Cykle* 8:21:3488-3492, 2009
165. Haferlach T, Winkemann M, Nickenig C, et al: Which compartments are involved in Philadelphia-chromosome positive chronic myeloid leukaemia? An answer at the

single cell level by combining May-Grunwald-Giemsa staining and fluorescence in situ hybridization techniques. *British journal of haematology* 97:99-106, 1997

166. Jacobsson B, Bernell P, Arvidsson I, et al: Classical morphology, esterase cytochemistry, and interphase cytogenetics of peripheral blood and bone marrow smears. *The journal of histochemistry and cytochemistry : official journal of the Histochemistry Society* 44:1303-9, 1996
167. Sala A, Voelkel N, Maclouf J, et al: Leukotriene E4 elimination and metabolism in normal human subjects. *The Journal of biological chemistry* 265:21771-8, 1990
168. Mattsson B, Wallgren A: Completeness of the Swedish Cancer Register. Non-notified cancer cases recorded on death certificates in 1978. *Acta radiologica. Oncology* 23:305-13, 1984
169. Barlow L, Westergren K, Holmberg L, et al: The completeness of the Swedish Cancer Register: a sample survey for year 1998. *Acta oncologica* 48:27-33, 2009
170. Henson DE, Ries LA: The relative survival rate. *Cancer* 76:1687-8, 1995
171. Dickman PW, Adami HO: Interpreting trends in cancer patient survival. *Journal of internal medicine* 260:103-17, 2006
172. Ederer F HH: Instructions to IBM 650 programmers in processing survival computations: Methodological note No 10 Bethesda, MD National Cancer Institute. 1959
173. Dickman PW, Sloggett A, Hills M, et al: Regression models for relative survival. *Statistics in medicine* 23:51-64, 2004
174. LFN: General Guidelines for Economic Evaluation from the Pharmaceutical Benefits Board, 2003