

From Department of Physiology and Pharmacology,
Section of Integrative Pain Research
Karolinska Institutet, Stockholm, Sweden

Sex differences in acute and chronic experimental pain models

Lili Li



**Karolinska
Institutet**

Stockholm 2010

All previously published papers were reproduced with permission from the publisher.

Published by Karolinska Institutet.

© Lili Li, 2010

ISBN 978-91-7457-150-9

Printed by



www.reproprint.se

Gårdsvägen 4, 169 70 Solna



To my family and the memory of my grandfather

ABSTRACT

Sex differences in response to noxious stimuli and in the development of chronic pain have been increasingly recognized and studied in humans and laboratory animals. In the clinic, extensive evidence indicates that there are a large number of chronic pain conditions that have higher prevalence in women than in men and some of these conditions, such as migraine and temporomandibular pain disorder, are also affected by the menstrual cycle. The mechanisms for sex differences in pain, particular in chronic pain, are largely unknown. The work presented in this thesis aims to explore mechanisms of sex differences using experimental pain models in rodents.

In the first part of the thesis, we explored the role of estrogen receptors and the adenosine A_{2A} receptor in sex differences in pain using genetically modified mice. We observed that in wild-type controls for estrogen receptor α or β knock-outs, females were significantly more sensitive than males to mechanical stimulation under normal condition and after carrageenan-induced inflammation. Such sex differences were eliminated in mice lacking either estrogen receptor α or β . Mechanical hypersensitivity resulting from partial sciatic nerve injury did not however differ between the sexes or between the wild-types and both estrogen receptor knock-outs. These results suggest that estrogen receptors α or β play a role in sex difference in basal mechanical pain threshold and inflammatory hypersensitivity. There was no sex difference in baseline mechanosensitivity in mice lacking the adenosine A_{2A} receptor and wild-type controls. Carrageenan-induced mechanical hypersensitivity was significantly reduced in the A_{2A} receptor knock-outs compared to wild-types. ZM-241,385, a selective A_{2A} receptor antagonist, reduced inflammatory hypersensitivity in wild-type females, but not in males. The selective A_{2A} receptor agonist CGS 21680 produced significantly more hypersensitivity in wild-type female mice than in males. These results suggest that activation of peripheral adenosine A_{2A} receptors contributes to inflammatory hypersensitivity and that this effect is more prominent in females than in males.

The second part of the thesis deals with the development of neuropathic pain-like behaviors (allodynia) in rats after spinal cord or infraorbital nerve injury. We observed a significant sex difference (females > males) in the development of mechanical allodynia after spinal cord injury in rats independent of the extent of injury. Increased mechanical hypersensitivity in females was not related to estrous stage at the time of injury. Similarly, after infraorbital nerve injury, female rats developed more persistent local and spread mechanical allodynia which was also not influenced by the estrous stages at the time or after injury.

These studies provide further evidence for the presence of sex difference in baseline mechanical pain threshold, inflammatory hypersensitivity and experimental neuropathic pain in rodents. Furthermore, our results showed that estrogen receptors and adenosine A_{2A} receptor may be involved in sex difference in pain sensitivity under normal condition or after inflammation. Finally, although female rats developed more persistent allodynia-like behaviors after spinal cord or infraorbital nerve injury, there appears to be no impact of the estrous cycle on pain development.

Key words: estrogen, adenosine, sex difference, nociception, carrageenan, inflammation, neuropathic pain, mice, rats

LIST OF PUBLICATIONS

- I. **Li L**, Fan X, Warner M, Xu XJ, Gustafsson JÅ, Wiesenfeld-Hallin Z. Ablation of estrogen receptor α or β eliminates sex differences in mechanical pain threshold in normal and inflamed mice. *Pain*. 2009;143:37-40.
- II. **Li L**, Hao JX, Fredholm BB, Schulte G, Wiesenfeld-Hallin Z, Xu XJ. Peripheral adenosine A_{2A} receptors are involved in carrageenan-induced mechanical hyperalgesia in mice. *Neuroscience*. 2010;170:923-928.
- III. **Li L**, Andersson OD, Hao JX, Xu XJ, Wiesenfeld-Hallin Z. Sex difference in the development of pain-like behaviour after photochemically-induced spinal cord ischemia in rats. Submitted.
- IV. **Li L**, Gao T, Hao JX, Xu XJ, Wiesenfeld-Hallin Z. The increased mechanical allodynia-like response after infraorbital nerve injury in female rats is not dependent on estrous stage. Manuscript.

Contents

1. Introduction	1
1.1 Pain: Definition and classification	1
1.2 Pain pathways	2
1.3 Sex differences in pain and the role of sex hormones	3
1.4 Role of estrogen and its receptors in pain	6
1.5 Adenosine and adenosine receptors in pain	7
1.6 Animal pain models and genetically modified mice	9
2. Aims of the thesis	11
3. Materials and methods	12
3.1 Animals	12
3.2 Generation of estrogen receptor knock-out mice	12
3.3 Generation of Adenosine A _{2A} receptor knock-out mice	12
3.4 Carrageenan-induced inflammation in mice	13
3.5 Photochemically-induced injury to nerves and spinal cord	13
3.5.1 Sciatic nerve injury in mice	13
3.5.2 Spinal cord injury in rats	13
3.5.3 Infraorbital nerve injury in rats	14
3.6 Behavioral tests of nociception	14
3.6.1 Tests of hindpaw sensitivity in mice to mechanical stimulation	14
3.6.2 Tests of acute mechanical hypersensitivity after spinal cord injury in rats	14
3.6.3 Motor deficits after spinal cord injury	14
3.6.4 Assessment of localized and spread mechanical sensitivity after infraorbital nerve injury	15
3.7 Determination of the estrous cycle in rats	16
3.8 Morphological assessment of the spinal cord injury in rats	16
3.9 Immunohistochemistry in A _{2A} R ^{-/-} mice	16
3.10 Real time PCR analysis in A _{2A} R ^{-/-} mice	17
3.11 Drugs and statistics	17
4 Results	18
4.1 Estrogen receptors in sex difference in pain (paper I)	18
4.1.1 Response to mechanical stimulation under normal condition	18
4.1.2 Carrageenan-induced inflammation in ER α ^{-/-} and ER β ^{-/-} mice	18
4.1.3 Photochemically-induced sciatic nerve injury in ER α ^{-/-} and ER β ^{-/-} mice	18
4.2 The role of adenosine A _{2A} R in carrageenan-induced mechanical hyperalgesia and sex difference in mice (paper II)	19
4.2.1 Reduced hyperalgesia in A _{2A} R ^{-/-} mice after inflammation	19
4.2.2 The effect of the A _{2A} R antagonist ZM-241,385 on inflammatory hyperalgesia	19
4.2.3 The effect of the A _{2A} R agonist CGS 21680 on paw withdrawal threshold	20
4.2.4 Low level of the A _{2A} R expression in DRG	20

4.3 Sex differences in the development of allodynia in rats after spinal cord injury (paper III).....	21
4.3.1 Sex differences in acute allodynia.....	21
4.3.2 No impact of estrous cycle.....	21
4.3.3 Sex difference in acute allodynia is not due to difference in the extent of injury.....	21
4.4 Sex differences in the development of allodynia in rats after infraorbital nerve injury (paper IV).....	22
4.4.1 Baseline response threshold to mechanical stimulation.....	22
4.4.2 Sex difference in the development of localized and spread allodynia.....	22
4.4.3 Lack of impact by estrous stage on mechanical hypersensitivity after infraorbital nerve injury.....	22
5. Discussion.....	24
5.1 Sex difference in pain sensitivity in rodents.....	24
5.2 The involvement of ER α and ER β in sex difference in pain.....	25
5.3 A _{2A} R activation in inflammatory hyperalgesia and sex differences in pain.....	26
5.4 Sex difference in the development of neuropathic pain-like behaviors in rats.....	27
5.5 Estrous stage and the development of neuropathic pain-like behaviors.....	28
6. Conclusions.....	30
7. Acknowledgements.....	31
8. References.....	34

LIST OF ABBREVIATIONS

A ₁ R	Adenosine A ₁ receptor
A _{2A} R ^{-/-}	Adenosine A _{2A} receptor knock-out
A _{2A} R ^{+/-}	Adenosine A _{2A} receptor heterozygous
A _{2B} R	Adenosine A _{2B} receptor
A ₃ R	Adenosine A ₃ receptor
ADP	Adenosine diphosphate
ATP	Adenosine triphosphate
AP1	Activator protein 1
ASIC	Analgesics–acid-sensing ion channels
cAMP	Cyclic adenosine monophosphate
CP	Caudate putamen
CNS	Central nervous system
COX	Cyclooxygenase
DRG	Dorsal root ganglion
ER α ^{-/-}	Estrogen alpha receptor knock-out
ER β ^{-/-}	Estrogen beta receptor knock-out
ERE	Estrogen response element
ES	Embryonic stem
IASP	International Association for the Study of Pain
IBS	Irritable bowel syndrome
IL-6	Interleukin-6
i.p.	Intraperitoneally
i.v.	Intravenously
LH	Luteinizing hormone
MAD	Median absolute deviation
Mclr	Melanocortin-1 receptor gene
NASIDs	Non-steroid anti-inflammatory drugs
NGF	Nerve growth factor
NRM	Nucleus raphe magnus
PAG	Periaqueductal gray
PBS	Phosphate buffer saline
RA	Rheumatoid arthritis
s.c.	Subcutaneously
SEM	Standard error of the mean
TMD	Temporomandibular disorder
WDR	Wide dynamic range

1 INTRODUCTION

1.1 PAIN: DEFINITION AND CLASSIFICATION

Pain normally serves as an alarm system activated in response to impending damage to the organism. According to the International Association for the Study of Pain (IASP), pain is an unpleasant sensory and emotional experience associated with actual or potential tissue damage (Merskey and Bogduk, 1994). It is a multidimensional experience, which contains essentially a sensory, cognitive and emotional component (Woolf, 2004).

Pain can be classified into different categories according to various criteria, such as those based on the cause of pain, its duration, location, underlying diseases etc. The most widely used criteria are aetiological (i.e. based on the cause of pain). In this regard, pain can be classified into three major categories, nociceptive, inflammatory and neuropathic. Nociceptive pain is generated by activation of nociceptors that are specialized to be activated by noxious stimuli which have the potential of causing tissue damage. Nociception or nociceptive pain is essential in survival for organisms to avoid potential or actual tissue damage (Scholz and Woolf, 2002). Nociceptive pain is mostly recognized as acute pain since that pain stops when the stimulus has been removed.

Inflammatory pain is associated with processes that can be caused by tissue damage, infections, tumor growth and various forms of chronic inflammatory diseases, such as autoimmune disease. During inflammation, multiple mediators are released locally from the damaged and recruited inflammatory cells. This results in the release of cytokines, growth factors, neuropeptides, kinins, purines, amines, prostanoids and ions, including protons (Boddeke, 2001; Manthly et al, 2002). These mediators can activate and sensitize nociceptors, thus evoke pain (Scholz and Woolf, 2002). The symptoms of inflammation include cell migration, oedema, erythema, pain and hyperalgesia (Marchand et al, 2005). In most of the cases, inflammatory pain responds to non-steroid anti-inflammatory drugs (NASIDs) or opiates such as morphine (Basbaum et al, 2008; Fitzcharles et al, 2010). Inflammatory pain under many conditions such as rheumatoid arthritis (RA) is chronic. Chronic inflammatory pain can be characterized by hyperalgesia (greater pain after normally painful stimuli) and allodynia (normally non-noxious stimuli that are perceived as painful).

Neuropathic pain arises from a primary lesion or dysfunction in the peripheral or central nervous system (CNS) (Merskey and Bogduk, 1994). Examples of neuropathic pain include painful polyneuropathy, postherpetic neuralgia, trigeminal neuralgia, spinal cord injury pain and post-stroke pain. Clinically, neuropathic pain is characterized by spontaneous ongoing or shooting pain and evoked pain such as hyperalgesia and allodynia (Baron et al, 2010). Neuropathic pain is mostly chronic, difficult to treat and associated with plasticity in the central and peripheral nervous system. The mechanisms of neuropathic pain are not well understood and treatments are largely unsatisfactory. Neuropathic pain may respond to some antiepileptics, tricyclic antidepressants, and antiarrhythmics. Local anesthetics used to block the nerve may also be effective in some cases.

1.2 PAIN PATHWAYS

Nociception is initiated when noxious stimuli, which may be mechanical, thermal or chemical, are detected by nociceptors (Basbaum and Jessell, 2000). The cell bodies of the nociceptors are located in the dorsal root ganglion (DRG) and the trigeminal ganglions and they have peripheral and central axons that innervate their target organ and the spinal cord, respectively (Basbaum et al, 2009). There are two major categories of nociceptors, A δ fibers and C fibers (Meyer et al, 2008). A δ fibers are thinly myelinated and respond to mechanical and thermal stimulation. These fibers differ considerably from larger diameter A β fibers which respond to innocuous mechanical stimulation (i.e., light touch). C fibers are unmyelinated, and many of them are polymodal which means that they respond to stimulation of different modalities such as heat, mechanical stimuli, protons and cold (D'Mello and Dickenson, 2008). The energy of noxious stimuli is converted into electrical activity by these receptors and conducted to the spinal cord where the central axons of sensory nerves terminate (Scholz and Woolf, 2002).

The dorsal horn of the spinal cord is the receiving zone for primary afferent axons that transmit signals from nociceptors. In general, A δ fibers and C fibers terminate in the superficial layers, laminae I and II, although some reach deeper laminae (Light and Perl, 1979; Sugiura et al, 1987). Large myelinated fibers including A α and A β fibers project to the deeper laminae (laminae III-VI) (Brown, 1981). A large number of neurons located in the dorsal horn are capable of responding to input from primary afferents. Among these are nociceptive specific neurons located primarily in lamina I of dorsal horn which

respond exclusive to activation of nociceptors, and wide dynamic range (WDR) neurons (Kandel and Schwartz, 1991), located mostly in the deeper laminae of the dorsal horn. WDR neurons respond to stimulation of various sensory modalities (thermal, chemical and mechanical) and in a graded fashion in accordance to the intensity of stimulation (Cervero et al, 1976).

From the spinal cord, the nociceptive information is conveyed to the thalamus via the contralateral spinothalamic tract, to the medulla and brainstem via the spinoreticular and spinomesencephalic tracts or to the hypothalamic nuclei via the spinohypothalamic tract. Ascending information is further transmitted to several cortical and subcortical brain regions including anterior cingulate cortex, insular cortex, frontal and pre-frontal cortices, primary and secondary somatosensory cortices, and amygdala (Tracey, 2005). Brain structures such as periaqueductal gray (PAG) and the nucleus raphe magnus (NRM) also modulate pain transduction by either inhibiting or facilitating spinal nociceptive input (Porreca et al, 2002).

1.3 SEX DIFFERENCES IN PAIN AND THE ROLE OF SEX HORMONES

As a complex and multidimensional sensory experience, pain responses of different individuals can be affected by a broad range of variables, such as genetic, physiological, psychological, cultural and social factors (Holdcroft and Berkley, 2005; Greenspan et al, 2007). In recent years, sex has been shown to be an important factor in modulating the experience of pain with a growing body of evidence demonstrating that males and females experience pain differently and respond differentially to specific classes of analgesics (Paller et al, 2009). In both experimental and clinical studies, pain thresholds and pain tolerance are generally shown to be lower in females than males as tested with various stimulus modalities (Berkley, 1997; Fillingim et al, 1999; Mogil, 2000; Barrett et al, 2002; Wiesenfeld-Hallin, 2005; Greenspan et al, 2007). Females report also more frequent, severe and longer lasting pain which is often anatomically more diffused than males with similar disease processes (Berkley, 1997; Hurley and Adams, 2008). There are many chronic pain states such as migraine, temporomandibular disorder (TMD), rheumatoid arthritis (RA), irritable bowel syndrome (IBS), and fibromyalgia that are more prevalent in women (Ektor-Andersen et al, 1993; Craft et al, 2004; Holdcroft and Berkley, 2005; Greenspan et al, 2007). However, some chronic conditions such as migraine without aura and cluster headache are more common in men (Greenspan et al, 2007).

Imaging studies of the brain have shown sex differences in humans in the intensity of cerebral activation and the spatial pattern in response to acute noxious stimuli (Paulson et al, 1998; Derbyshire et al, 2002; Zubieta et al, 2002; Moulton et al, 2006).

The response to analgesics has also been shown to be sex dependent (Craft, 2003; Wiesenfeld-Hallin, 2005; Berkley et al, 2006). In humans, women have greater response to μ -opioid agonists than men (Kest et al, 2000; Cook et al, 2000; Craft, 2003) whereas in rodents, morphine appears to be more effective in males than in females (Mogil et al, 2000; Berkley et al, 2006). The response to κ -opioids is also different between sexes in both mice and human (Wiesenfeld-Hallin, 2005). κ -Receptor agonists appear to be more potent analgesics in women than in men (Gear et al, 1996 and 1999) which may be due to pain modulation by the melanocortin-1 receptor (Mclr) gene in a female-specific manner in both mice and human (Mogil et al, 2003). Besides opioids, responses to other analgesics also show sex differences. For example, administration of an inflammatory agent to cyclooxygenase-1(COX-1) and cyclooxygenase-2 (COX-2) knock-out mice had greater effects in females (Chillingworth et al, 2006). Similarly, Chanda and Mogil (2006) found that a non-specific analgesics-acid-sensing ion channel (ASIC) blocker (amiloride) had greater analgesic effect in female mice on formalin-induced nociception.

Sex hormones (androgens, estrogens and progestagens) have received considerable attention in research of the mechanisms of sex differences in pain. The levels of plasma estrogen vary throughout the menstrual cycle during the reproductive years (18-50 years) (Fig. 1a) and they are on average 3–10 times greater than those found in men (Eldrup et al, 1987). It has been shown that in many chronic pain conditions, there is a correlation between pain and the menstrual cycle. For example, about 10% of female migraine sufferers have menstrual migraines, whereas headaches regularly occur at the beginning of menstruation (Brandes, 2006; Martin and Lipton, 2008). The highest severity of TMD pain was noted during the late luteal and early follicular phases. There was also a second peak of increased pain severity that occurred around ovulation in normally cycling women (LeResche et al, 2003). Menopause, which results in a decrease in estrogen levels in women, is strongly associated with changes in musculoskeletal pain conditions. The number of women with RA and fibromyalgia increases around menopause, whereas the number of women suffering from migraine and TMD decreases (Pamuk and Cakir, 2005; Greenspan et al, 2007; Cairns and Gazerani, 2009). A number of studies have also examined changes in pain in response to noxious stimuli across the menstrual cycle in

human. A meta-analysis of these studies indicates that for most forms of painful stimuli (with exception of electrical stimuli), higher pain thresholds and tolerance are observed during late follicular and luteal phases, and the effect size is small to moderate (Riley et al, 1999).

The female rat has a 4-5 day vaginal estrous cycle which is correlated with changes of hormone levels (Fig.1b). The estrous cycle in rats is generally divided into 3 stages: proestrous, estrous and diestrous (Krinke, 2000). In cycling females, serum estradiol concentration is low during estrous, gradually rises during diestrous, peaks during early proestrous, and declines during late proestrous. Serum progesterone concentration peaks twice, once during middle diestrous and a second time during late proestrous (Butcher et al, 1974). There is evidence to suggest that baseline pain sensitivity in rats peaks during proestrous and early estrous compared to diestrous (Fillingim and Ness, 2000). Hind paw withdrawal latencies were significantly higher during proestrous than during estrous and diestrous in carrageenan-infammed rats (Tall and Crisp, 2004). In a TMD model of pain, it was reported that females in proestrous exhibited fewer pain behaviors than those in diestrous (Clemente et al, 2004). Modulation of opioid-mediated analgesia by menstrual cycle has also been reported. Opioids are shown to be less potent during estrous compared to females tested in other stages (Craft et al, 2004). There is also some evidence that opioid potency differs between rats tested in "early" vs "late" proestrous (Berglund and Simpkins, 1988; Stoffel et al, 2003). Taken together, sex differences and the effect by menstrual cycle suggest that the sex hormones of females may affect behavioral responses to pain. Although the exact mechanisms by which sex hormones affect pain sensitivity, especially in chronic pain conditions, has not been determined.

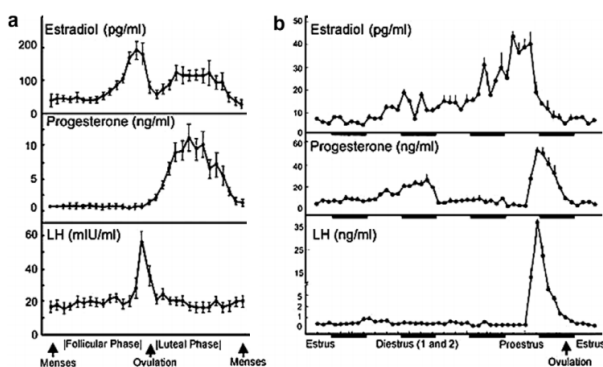


Fig.1 Fluctuation of estradiol, progesterone, and luteinizing hormone (LH) in humans (a) and rats (b) during the menstrual and estrous cycle, respectively (Greenspan et al, 2007).

Generally, the impacts of gonadal steroid hormones fall into two categories, organizational or activational (Cooke et al, 1998). Organizational effects of hormones result in permanent structural and functional differences in the CNS during development. Activational effects are temporary and reversible and result from steroid activation or inhibition on existing circuits in the adult often through specific receptors. That is, hormones continue to promote male or female characteristics in the adult by acting on neural circuits that were organized during development (Aloisi et al, 2006). Animal studies showed that sex differences in pain can often be eliminated by manipulating gonadal hormones during neonatal periods or adulthood. For example, male rodents are more sensitive than females to morphine-induced analgesia (Mogil et al, 2000), whereas neonatally castrated males are less sensitive to morphine than normal males, and in contrast, neonatally androgenized females are more sensitive to morphine than normal females (Cicero et al, 2002; Krzanowska et al, 2002). Gonadectomized male pups exhibited greater mechanical allodynia in carrageenan-induced inflammation and testosterone replacement cannot reverse this phenomenon (Borzan and Fuchs, 2006). LaCroix-Fralish et al. (2005a) demonstrated that female rats developed more hyperalgesia after lumbar nerve injury, whereas the enhanced hypersensitivity in females was reversed in pubertal and adult animals ovariectomized 6 weeks prior to the injury.

1.4 ROLE OF ESTROGEN AND ITS RECEPTORS IN PAIN

In women, rapid decreases in estrogen level at menstruation appear to further increase ongoing muscle and joint pain in TMD and RA as well as in migraine (LeResche et al, 1997; Brandes, 2006). Estrogens are produced primarily in the ovaries during reproductive years (Craft et al, 2004). There are three major natural estrogens in women: estradiol, estrone, and estriol. Estradiol is the predominant form in nonpregnant females whereas estrone is produced during menopause and estriol is the primary estrogen during pregnancy (Ascenzi et al, 2006). In the body estrogens are produced from androgens through aromatization by enzymes. Small amounts of estrogens are also produced by other tissues such as the liver, adrenal glands, and the breasts. These secondary sources of estrogens are especially important in postmenopausal women (Nelson and Bulun, 2001).

Estradiol is highly lipophilic and therefore can pass the blood-brain barrier and cell membranes. Two types of receptors for estrogen (ERs) have been identified and are

named ER-alpha ($ER\alpha$) and ER-beta ($ER\beta$). They are intracellular receptors and located in the nucleus (Gruber et al, 2002; Koehler et al, 2005). These receptors are the main mediators of estrogen's effects (Mueller and Korach, 2001). Some estrogen receptors associate with the cell surface membrane and can be rapidly activated by exposure to estrogen (Levin, 2009), but how much this pathway interacts with pain modulation is not clear (Craft, 2007). Estradiol binds equally well to both receptors with high affinity, estrone and estriol bind preferentially to the $ER\alpha$ and $ER\beta$, respectively (Fan et al, 2010). It is generally believed that estrogens diffuse into the cell and bind to the ERs homo- or hetero-dimers to act as transcription factors. Then, this nuclear estrogen-ER complex binds to estrogen response element (ERE) sequences directly or indirectly through protein-protein interactions with activator protein 1 (AP1) site in the promoter region of estrogen-responsive genes, resulting in changes in mRNA levels and protein production and finally, physiological response (Deroo and Korach, 2006).

$ER\alpha$ and $ER\beta$ are both present in the DRGs, spinal cord (laminae I and II), trigeminal subnucleus caudalis as well as hypothalamus, amygdala, PAG and dorsal raphe nucleus, areas involved in pain transmission and modulation (Shugrue et al, 1997). $ER\alpha$ and $ER\beta$ are differentially regulated in different tissues, including in the CNS (Osterlund et al, 1998) and DRGs (Taleghany et al, 1999). By action on $ER\alpha$ and $ER\beta$, estradiol modulates nerve growth factor (NGF) receptor in DRGs, endogenous enkephaline expression (Priest et al, 1995) and μ -opioid receptor levels (Amandusson et al, 1996 and 1999; Micevych et al, 1997; Quiñones-Jenab et al, 1997; Micevych and Sinchak, 2001). Animal studies showed that increased formalin-induced paw licking after central administration of estradiol (Aloisi and Ceccarelli, 2000). Estradiol also has been reported to increase pain response after peripheral or spinal cord injury (Gorman et al, 2001; Dina et al, 2007). By large, the role of $ER\alpha$ and $ER\beta$ in pain and sex difference in pain has not been thoroughly studied.

1.5 ADENOSINE AND ADENOSINE RECEPTORS IN PAIN

Adenosine is an endogenous nucleoside and a structural component of nucleic acids such as adenosine triphosphate (ATP), adenosine diphosphate (ADP) and cyclic adenosine monophosphate (cAMP) (Fig. 2A). It is a ubiquitous homeostatic substance released from most cells, including neurons and glia under normal conditions or under depolarization, such as during elevated K^+ concentrations, electrical stimulation and glutamate receptor

activation. Adenosine is involved in many biological processes such as energy transfer and signal transduction and also physiological processes such as cardiovascular regulation, cognition, and neuroprotection (Fredholm, 1997; Ribeiro et al, 2002).

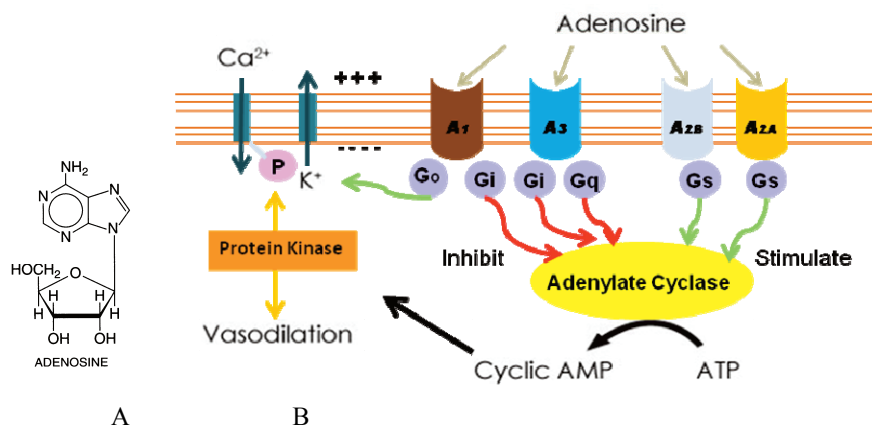


Fig. 2 Structure of adenosine (A) and adenosine receptor coupling (B).

There are at least four subtypes of G-protein coupled receptors, adenosine A₁, A_{2A}, A_{2B} and A₃ (A₁R, A_{2A}R, A_{2B}R, A₃R) (Fredholm et al, 2001). A₁Rs are usually coupled to inhibitory G_i or G_o G-proteins (Linden, 2001). A_{2A}Rs and A_{2B}Rs are coupled to G_s G-protein. A₃Rs are coupled to G_i, G_q, and G_o-protein (Fredholm et al, 2001; Ribeiro et al, 2002). A_{2A}R raises cAMP and A₁R decreases cAMP, hyperpolarizes neurons and depresses calcium currents (Dolphin et al, 1986; Dunwiddie and Masino, 2001; Fredholm et al, 2001). A₁R is widely distributed in brain, spinal cord and the periphery (Fredholm et al, 2001), whereas adenosine A_{2A}Rs are predominantly expressed in basal ganglia, in the periphery and in immune cells (Dunwiddie and Masino, 2001).

Adenosine has complex effects on nociceptive pathways and can either enhance or decrease nociception, depending on the site of administration and the receptor subtype activated (Sawynok, 1998; Sawynok and Liu, 2003) (Fig. 2B). Activation of A₁R, located primarily interneurons in the inner lamina II of the superficial dorsal horn (Schulte et al, 2003), primarily produces inhibition of neuronal activity in the spinal cord and DRGs (Dolphin et al, 1986; Li and Peril, 1994; Reeve and Dickenson, 1995; Deuchars et al, 2001) and administration of adenosine agonists that activate A₁Rs produces antinociception in a variety of tests (Sawynok and Liu, 2003). Mice lacking the A₁R have

an enhanced response to nociceptive stimuli under normal conditions, after inflammation and nerve injury (Johansson et al, 2001; Wu et al, 2005) supporting an inhibitory function for A₁Rs in nociception.

The role of A_{2A}Rs in peripheral and spinal nociception is less clear than that of A₁Rs. The A_{2A}R gene is expressed in the DRG and in the peripheral and central presynaptic terminals of sensory afferents in rats (Kaelin-Lang et al, 1998), suggesting the potential involvement of A_{2A}R in pain. A_{2A}R knock-out (A_{2A}R^{-/-}) mice are hypoalgesic in tests of acute nociception (Ledent et al, 1997) and the selective A_{2A}R antagonist SCH 58261 attenuates nociceptive responses in acute pain tests and in the formalin test in mice, suggesting a pronociceptive role of A_{2A}Rs (Godfrey et al, 2006; Hussey et al, 2007). In contrast, CGS 21680, a selective A_{2A}R agonist, has also been shown to produce antinociception upon intrathecal administration in the formalin test and after inflammation (Poon and Sawynok, 1998; Yoon et al, 2005).

Sex difference in adenosine modulation of physiological functions has also been reported. For example, the magnitude of the involvement of the A₁Rs in regulation of heart rate, body temperature and locomotor activity in mice is different in males and females as studied in knock-out mice (Yang et al, 2007). The neurotoxic effects of A₁R antagonism during ethanol withdrawal also exhibit sex difference (Bulter et al, 2008 and 2009) as does the incidence of chest pain during adenosine infusion in human cardiac patients (Kumar and Movahed, 2002). However, the role of A_{2A}R in sex difference in pain has not been examined.

1.6 ANIMAL PAIN MODELS AND GENETICALLY MODIFIED MICE

Animal models for pain can be roughly categorized into three groups, tests of nociception, models of acute pain and chronic pain. The nociceptive pain tests evaluate the response of animals to nociceptive stimuli using for example the hot plate, tail flick or paw pressure tests. Acute pain models include cutaneous inflammation (carrageenan or Freund's adjuvant), monoarthritis (carrageenan, kaolin), traumatic injury (skin incision, bone fracture) and some models of visceral pain (Ness and Gebhart, 1988). There are also animal models for chronic pain, including models for cancer pain, polyarthritis and neuropathic pain. In recent years, a large number of neuropathic pain models have been developed after various injuries to the peripheral or central nervous system. The rat sciatic

nerve as well as its branches has been used most often for the study of peripheral neuropathy because they innervate the hind paw, which is a suitable site for sensory testing (Bennett and Xie, 1988; Seltzer et al, 1990; Kim and Chung, 1992; Hogan, 2002). Models using other forms of injury (such as ischemia, toxin or viral infection) or affecting other peripheral nerves (such as infraorbital nerve innervating facial region) have also been developed (Xu and Wiesenfeld-Hallin, 2003). There are also central neuropathic pain models, mostly after injury to the spinal cord using the photochemically-induced ischemia technique (Hao et al, 1991), compression (Martin et al, 1992; von Euler et al, 1997), weight drop (Siddall et al, 1995), and surgical hemisection (Christensen et al, 1996).

In the current work, several pain tests and models were used. These include nociceptive tests, carrageenan-induced acute inflammation, photochemically-induced sciatic nerve injury (Hao et al, 2000), infraorbital nerve injury (Dominguez et al, 2009) and spinal cord injury models (Xu et al, 1992).

Transgenic knock-out mice have been widely employed in pain research (Lariviere et al, 2001; Malmberg and Zeitz, 2004; LaCroix-Fralish and Mogil, 2009) and yielded a great deal of knowledge (Mogil and McCarson, 2000). By using knock-out mice, the physiological importance of certain genes can be explored for their involvement in pain either during development or in adults. For examples, knock-out studies have established important roles for neurotrophins and their receptors such as NGF (Crowley et al, 1994) and TrkA (Smeyne et al, 1994) in the development of nociceptors. Null mutations in cytokine genes have shown a role for interleukin (IL)-6 (Xu et al, 1997) and interferon (IFN)- α (Robertson et al, 1997) in the development of inflammation and neuropathic pain, respectively. Furthermore, the physiological and pharmacological contribution of receptors can be identified or verified with target deletion of receptors which are potentially associated with pain such as in the case of the opioid system. Results gained from opioid receptor knock-out mice showed that each receptor (μ , δ or κ -opioid receptor) was implicated in different acute pain modalities in a distinct manner and to a different extent, which is in line with pharmacological data (Kieffer and Gavériaux-Ruff, 2002). Thus, using knock-out mice together with additional pharmacological agents could contribute to a better understanding of pain mechanisms. In this thesis, I used ER α knock-out (ER $\alpha^{-/-}$), ER β knock-out (ER $\beta^{-/-}$) and A_{2A}R $^{-/-}$ mice to elucidate their roles in the sex difference in pain.

2 AIMS OF THE THESIS

The general aim of the work presented in this thesis is to study sex differences in experimental models of acute and chronic pain. In particular, we want to study

1. The role of estrogen receptors in sex differences in mechanical nociception, inflammation and in the development of neuropathic pain using knock-out mice
2. To study the role of A_{2A}R in nociception and inflammatory hyperalgesia using knock-out mice
3. To determine sex differences in the development of acute pain-like behaviors in rats after spinal cord injury and to study the impact of estrous cycle on pain development
4. To determine sex differences in the development of localized and spread mechanical hypersensitivity in rats after infraorbital nerve injury and to study the impact of estrous cycle on pain development

3 MATERIALS AND METHODS

3.1 ANIMALS

All experiments were conducted according to the Ethical Guidelines of IASP and were approved by the local research ethics committee (Stockholm Södra Försöksdjursetiska Nämnd). All animals (rats and mice) were housed in standard lab conditions (22 °C; 12 h light/dark cycle, lights on at 6 a.m.) with access to food and water *ad libitum*. In paper I, the ER α ^{-/-} and wild-type C57BL/6 mice were from Taconic M&B (Eiby, Denmark). The ER β ^{-/-} and wild-type C57BL/6 mice were generated and supplied by the Department of Biosciences and Nutrition, Karolinska Institutet. In paper II, the A_{2A}R^{-/-} mice were generated and bred in the Department of Physiology and Pharmacology, Karolinska Institutet and the wild-type C57BL/6 mice were from Charles River (Sollentuna, Sweden). In papers III and IV, male and female Sprague-Dawley rats (Møllegaard Ltd., Skensved, Denmark) were used.

3.2 GENERATION OF ESTROGEN RECEPTOR KNOCK-OUT MICE

The methods for generating ER α ^{-/-} and ER β ^{-/-} mice have been described previously (Lubahn et al, 1993; Kregge et al, 1998). The targeted embryonic stem (ES) cells are from 129/J and 129P2/OlaHsd strains, respectively, and the resultant chimeras were backcrossed to C57BL/6 for 10 or 8 generations before homozygous ER α ^{-/-} and ER β ^{-/-} mice were generated using heterozygotes.

3.3 GENERATION OF ADENOSINE A_{2A} RECEPTOR KNOCK-OUT MICE

The generation and breeding of the adenosine A_{2A}R^{-/-} mice was described previously (Chen et al, 1999; Halldner et al, 2004). Briefly, the mouse A_{2A}R gene was cloned from mouse 129-Steel genomic library. The second coding exon was inactivated in ES cells with a standard replacement-type vector containing positive selection marker (PGK-*Neo* cassette). The correct integration of the mutant allele was demonstrated by Southern blotting, using a non-overlapping 3' probe after digestion with *Bam*HI (a restriction enzyme). One of the ES cell clones with the mutant allele was used to generate chimaeric mice. The chimaeric mice were bred with C57BL/6 to produce heterozygous genotype (A_{2A}R^{+/-}). Such mice were intercrossed to generate homozygous (A_{2A}R^{-/-}), heterozygous (A_{2A}R^{+/-}) and wild-type littermates (Chen et al, 1999). A_{2A}R^{-/-} mice was made on mixed (129-Steel x C57BL/6) genetic background, and were backcrossed for more than 10 generations with C57BL/6 to achieve essentially pure congenic lines.

3.4 CARRAGEENAN-INDUCED INFLAMMATION IN MICE

Mice were anaesthetized with chloral hydrate (300 mg/kg, i.p.). λ -carrageenan (Sigma-Aldrich) at a concentration of 2% dissolved in 20 μ l saline or 20 μ l normal saline was injected subcutaneously (s.c.) into the plantar area of the left or right hind paw, respectively. The effect of carrageenan or saline on the response of the mice to mechanical stimuli was determined 24 h after the injection. Paw thickness was measured with a caliper at metatarsal level before and 24 h after the injection.

3.5 PHOTOCHEMICALLY-INDUCED INJURY TO NERVES AND SPINAL CORD

3.5.1 Sciatic nerve injury in mice

Mice were anesthetized with chloral hydrate. The common sciatic nerve was exposed at midhigh level and gently from the surrounding tissue over a distance of about 1 cm proximal to the trifurcation. After being injected intravenously (i.v.) with erythrosine B (Aldrich, 32,5mg/kg) via the tail vein, the exposed nerve was irradiated with a tunable argon laser (Innova model 70, Coherent Laser Products Division, Palo Alto, CA, USA) operating at 514 nm with an average power of 0.16 W. The interaction between the dye and the laser beam causes vascular occlusion and focal ischemia (Gazeliuss et al, 1996; Kupers et al, 1998; Hao, et al, 2000). The irradiation time for mice was 45 seconds. During the period of irradiation, a heating pad was used to maintain the body temperature between 37-38 °C in the mice. After irradiation the wound was closed in layers and the animals were returned to their home cages.

3.5.2 Spinal cord injury in rats

Under chloral hydrate anesthesia, a midline incision was made on skin overlying T12-L1 vertebral segments. The rats were placed under the laser beam and irradiated as above at vertebral segment T13 (spinal cord level L4-5) for 5 or 10 min. Immediately before irradiation erythrosine B was injected i.v. via tail vein and the injection was repeated after 5 min. After irradiation, the wound was closed and the rats were put back to their cages. During the period of irradiation, a heating pad was used to maintain the body temperature between 37-38 °C in rats.

3.5.3 Infraorbital nerve injury in rats

Under chloral hydrate anesthesia the left infraorbital nerve was exposed via a longitudinal incision at the maxillary region. The different branches of the infraorbital nerve were held together and lifted with a glass hook while a piece of aluminium foil was placed under the nerve. The nerve was irradiated as above for 6 min. Immediately before irradiation erythrosine B was injected i.v. via tail vein and the injection was repeated after 5 min. After irradiation the wound was closed in layers and the rats were returned to their home cages for recovery. During the period of irradiation, a heating pad was used to maintain the body temperature between 37-38 °C in rats.

3.6 BEHAVIORAL TESTS OF NOCICEPTION

3.6.1 Tests of hindpaw sensitivity in mice to mechanical stimulation

The mice were placed in plastic cages with a metal mesh floor. The plantar surface of the hindpaw was stimulated with a set of calibrated monofilaments (von Frey hairs, Stoelting, IL, USA) with increasing force until the animal withdrew the limb. The range of stimulus forces was from 0.008 g to 10 g. Each monofilament was applied five times. The withdrawal threshold was taken as the force at which the animal withdrew the paw from at least three of five consecutive stimuli. The experimenters were blind to the genetic status of the mice.

3.6.2 Tests of acute mechanical hypersensitivity after spinal cord injury in rats

Vocalization thresholds to graded mechanical touch/pressure on the back of the rats were tested. During testing the rats were gently restrained in a standing position and the von Frey hair was pushed onto the skin in dermatomes rostral to the irradiated spinal segment-the upper or lower back area. The frequency of stimulation was about 1/s; and at each intensity the stimuli were applied 5-10 times. The intensity of stimulation which induced consistent vocalization (>75% response rate) was considered as pain threshold. The cut-off value was a von-Frey hair with 100g force.

3.6.3 Motor deficits after spinal cord injury

Motor deficits after spinal cord injury were evaluated using a combined neurological score using four different tests (Table. 1): motor score (observation of walking in an open field), toe spread (spreading of toes when lifted), righting reflex and extension

withdrawal (reflex replacement of hind leg when tested). A normal rat has a score of 0 whereas a completely paralyzed rat has a score of 70 (Hao et al, 1996).

Table. 1 Neurological score for evaluation of motor function of rats.

Grade	Description	Points
Motor score		
0	Normal walking	0
1	Walks with only mild deficit	5
2	Hindlimb can support weight	15
3	Frequent movement of hindlimb, no weight bearing	25
4	Minor movement in hindlimb, no weight bearing	40
5	No movement of hindlimb, no weight bearing	45
Toe spread		
0	Normal full toe spread	0
1	Partial spreading of toes	2,5
2	No spreading of toes	5
Righting		
0	Normal righting counter to direction of the roll	0
1	Weakened attempt to right	5
2	Delayed to right itself	10
3	No attempt to right	15
Extension withdrawal		
0	Normal	0
1	Weak and slow reflex to withdraw the hindlimb	2,5
2	No withdraw reflex	5

3.6.4 Assessment of localized and spread mechanical sensitivity after infraorbital nerve injury

The von Frey filaments were applied in ascending order to the territory of the infraorbital nerve on the hairy skin of the vibrissal pad bilaterally. The threshold was taken as the force at which the rat responded by withdrawal, escape, or attack in 3 of 5 stimuli.

The response to mechanical stimulation of skin areas of the neck, upper and lower back, and flanks was also tested. During testing, the rats were gently restrained in a standing position, and the von Frey filament was pushed onto the skin until the filament became bent. The frequency of stimulation was 1/s, and at each intensity, 5 to 10 stimuli were applied. The intensity of stimulation, which induced consistent vocalization at >75% response rate, was considered a pain threshold.

3.7 DETERMINATION OF THE ESTROUS CYCLE IN RATS

Vaginal smears were performed to ascertain which phase of the estrous cycle the female rats were in at the time of irradiation. The female rats were held vertically with one hand and the other hand inserted a micropipette 0.3 mm into the vaginal canal. The vagina was flushed three times with 10 µl 0.9% saline solution. The solution was put on a microscope slide and a cover glass was placed on it and examined under a light microscope. The smears were taken and evaluated 09:00-11:00 since the different estrous stages are more pronounced in the morning (Krinke, 2000). No dyes were applied since it has been shown that it does not significantly influence the evaluation (Marcondes et al, 2002).

3.8 MORPHOLOGICAL ASSESSMENT OF SPINAL CORD INJURY IN RATS

Morphology was performed 30 days after spinal cord injury. Rats were deeply anesthetized with chloral hydrate and perfused with phosphate buffer saline (PBS). Spinal segment L3-6 containing the irradiated area was removed and frozen immediately at -70°C. Transverse sections (14 µm thick) from the spinal cord were air dried, stained with hematoxylin and examined under a light microscope. Images were taken with a Nikon DXM 1200 digital camera. The epicenter of the injury was determined with an injury severity score. The percentage of the injured area in the epicenter was analyzed with the Easy Image software (version 3000). The length of the injury was also calculated as the distance from the beginning slice of the injury to the end slice of the injury.

3.9 IMMUNOCHEMISTRY IN A_{2A}R^{-/-} MICE

Wild-type and A_{2A}R^{-/-} mice were anesthetized with pentobarbital intraperitoneally (i.p.) and transcardially perfused with 4% paraformaldehyde in PBS. Brains and DRG (L4/5) were dissected and cryoprotected in PBS, 30% sucrose and NaN₃ at 4°C overnight. Tissues were sectioned on a cryostat (brain 35 µm; DRG 14 µm) and staining was performed either with free-floating brain sections or with DRG sections mounted on chrome-alum-coated slides. Sections were washed two times in PBS at room temperature and blocked for 1.5 h in PBTA (PBS, 0.25% Triton X-100, 3% BSA, 0.01% NaN₃). Primary antibody (1: 200; Santa Cruz goat IgG anti A_{2A} sc-7504 (R18)) was incubated at 4°C overnight. Following 3 washes in PBS, secondary antibody (1:500, Jackson ImmunoResearch, Cy2-coupled donkey anti goat) was applied for 1.5 h at room temperature. After extensive washing in PBS, sections were air-dried on glass slides

overnight and coverslipped with DAKO fluorescent mounting medium prior to analysis on a Zeiss LSM510 META laser scanning microscope.

3.10 REAL TIME PCR ANALYSIS IN $A_{2A}R^{-/-}$ MICE

DRGs were dissected out from wild-type and $A_{2A}R^{-/-}$ mice and total RNA was isolated using the Totally RNA kit (Ambion) according to the manufacturer's instructions. The RNA was eluted in RNase free water. Further quality control before the microarray analysis was performed on an Agilent 21000 Bioanalyser (Agilent Technologies). cDNA synthesis was performed with the GeneAmp RNA PCR kit (Applied Biosystems) using random hexamers and the MuLV reverse transcriptase according to the manufacturer's instructions. The adenosine A_1 , A_{2A} , A_{2B} , and A_3 receptor mRNA in the DRG was detected by using RT-PCR (Halldner et al, 2004). Primers and probes that were used are described elsewhere (Chunn et al, 2001). The RT-PCR reactions were performed in triplicate with the TaqMan Universal PCR master mix in an ABI Prism 7000 Sequence Detector System (Applied Biosystems, Foster City, CA). Values are expressed as the difference in the number of cycles needed to reach the detection threshold ($ct = \text{cycle at threshold}$) using β -actin as a reference ($\Delta ct = ct_{\text{adenosine receptor}} - ct_{\beta\text{-actin}}$).

3.11 DRUGS AND STATISTICS

The following drugs were used: λ -carrageenan in papers I and II, the selective $A_{2A}R$ agonist CGS21680 and the selective $A_{2A}R$ antagonist ZM-241,385 in paper II. All the drugs were from Sigma-Aldrich. λ -carrageenan and CGS21680 were dissolved in 0.9% saline. ZM-241,385 was dissolved in DMSO and then further diluted in cremophor EL and saline.

Data are presented as median \pm median absolute deviation (MAD) or mean \pm standard error of the mean (S.E.M). where appropriate. The data were analyzed with the Mann–Whitney *U*-test, Wilcoxon Signed rank test, ANOVA with repeated measures followed by Fisher's PLSD test as well as paired- or unpaired *t*-test. All statistics were made with StatView on a PC computer.

4 RESULTS

4.1 ESTROGEN RECEPTORS IN SEX DIFFERENCE IN PAIN (PAPER I)

In this study, we examined the role of estrogen receptors ER α and ER β in sex difference in pain using ER $\alpha^{-/-}$ and ER $\beta^{-/-}$ mice and their wild-type controls.

4.1.1 Response to mechanical stimulation under normal condition

A sex difference in withdrawal threshold to mechanical stimulation was observed in wild-type mice for both ER $\alpha^{-/-}$ and ER $\beta^{-/-}$ mice with females exhibiting significantly lower response threshold than males (Fig. 1, paper I). No sex differences was seen in the ER $\alpha^{-/-}$ and ER $\beta^{-/-}$ mice in that the females exhibited elevated threshold, which was comparable to males (Fig. 1, paper I). The withdrawal threshold to mechanical stimulation in the male mice was similar between the knock-outs and wild-types (Fig. 1, paper I).

4.1.2 Carrageenan-induced inflammation in ER $\alpha^{-/-}$ and ER $\beta^{-/-}$ mice

Twenty-four hours after injection of carrageenan in a hindpaw, the injected paw exhibited local edema in wild-type mice with no difference between the sexes (Fig. 2, paper I). There was also no significant difference in the extent of paw edema between the wild-types and either ER $\alpha^{-/-}$ or ER $\beta^{-/-}$ mice (Fig. 2, paper I).

All mice developed hypersensitivity to mechanical stimulation. The paw withdrawal threshold was significantly lower in female than in male mice 24 h after inflammation in both strains of wild-types (Fig 3, paper I). Again, no sex difference was observed in mice lacking either type of estrogen receptors, with ER $\alpha^{-/-}$ and ER $\beta^{-/-}$ females reacting similarly to males (Fig 3, paper I).

4.1.3 Photochemically-induced sciatic nerve injury in ER $\alpha^{-/-}$ and ER $\beta^{-/-}$ mice

Photochemically-induced sciatic nerve partial injury was generated in ER $\alpha^{-/-}$ and ER $\beta^{-/-}$ mice and their wild-type controls. All mice developed mechanical hypersensitivity of the hind paw. There were no sex differences in the extent of hypersensitivity in the two wild-type strains (Fig. 4, paper I). There were also no differences between the knock-outs and their respective wild-type controls during the 28-day observation period (Fig. 4, Paper I).

4.2 THE ROLE OF ADENOSINE A_{2A}R IN CARRAGEENAN-INDUCED MECHANICAL HYPERALGESIA AND SEX DIFFERENCE IN MICE (PAPER II)

In this study, we examined the role of A_{2A}R in carrageenan-induced hyperalgesia and in sex differences to the effects of a selective A_{2A}R agonist and antagonist using A_{2A}R^{-/-} mice and their wild-type controls.

4.2.1 Reduced hyperalgesia in A_{2A}R^{-/-} mice after inflammation

A_{2A}R^{-/-} mice exhibited similar baseline mechanical paw withdrawal thresholds as did age and weight matched wild-type mice of both sexes (Fig. 1A, paper II). Both wild-type and A_{2A}R^{-/-} mice developed mechanical hypersensitivity 24 h after s.c. carrageenan (Fig. 1A, paper II). There was no significant sex difference in either wild-types or A_{2A}R^{-/-} mice in baseline paw withdrawal thresholds and carrageenan-induced hyperalgesia (not shown). Although a substantial amount of hyperalgesia was also observed in A_{2A}R^{-/-} mice, the difference between the A_{2A}R^{-/-} mice and wild-types was significant in that the wild-types developed more severe hyperalgesia than the A_{2A}R^{-/-} mice. Carrageenan also produced significant paw edema 24 h after injection in both wild-types and A_{2A}R^{-/-} mice with no significant differences between the groups (Fig. 1B, paper II).

4.2.2 The effect of the A_{2A}R antagonist ZM-241,385 on inflammatory hyperalgesia

The effect of ZM-241,385 was examined in separate groups of male and female wild-type mice. Twenty-four hours after s.c. carrageenan, as mentioned above, the wild-type mice developed mechanical hypersensitivity (Fig. 2, paper II). S.c. ZM-241,385 injected directly into the hindpaw significantly increased the paw withdrawal threshold to mechanical stimulation in female, but not male, mice. Vehicle produced no significant effect in male and female mice. Comparing to the vehicle group, ZM-241,385 showed significant antinociceptive effect in both males and females, but the effect was significantly larger in females than males (Fig. 2, paper II).

4.2.3 The effect of the A_{2A}R agonist CGS 21680 on paw withdrawal threshold

Ten μ l s.c. saline injected into the paw produced a modest, but significant, decrease in paw withdrawal threshold for 60 min in wild-type mice (Fig. 3A, paper II). S.c. injection of CGS 21680 in the paw at 1 nmol/10 μ l produced a more profound and persistent decrease in paw withdrawal threshold in the A_{2A}R^{-/-} mice and in the wild-types than saline (Fig. 3A, paper II). The reduction in paw withdrawal threshold was significantly less in the A_{2A}R^{-/-} mice than in the wild-types (Fig. 3A, paper II). In the wild-type mice, the effect of CGS 21680 was significantly longer lasting in females than in males, a difference that was not seen in the A_{2A}R^{-/-} group (Fig. 3B, paper II). S.c. CGS 21680 injected into the hindpaw did not produce paw edema in any of the groups (data not shown). Injection of 1 nmol CGS 21680 s.c. in the neck region did not affect mechanical sensitivity of hindpaws in either male or female wild-type mice (Fig. 3 A, B, paper II).

4.2.4 Low level of A_{2A}R expression in DRG

In order to confirm that A_{2A}R are present in mouse DRG, which have been reported in rats (Kaelin-Lang et al., 1998), we examined its presence using immunohistochemistry employing a polyclonal goat anti-A_{2A}R antibody (Fig. 4A, paper II). However, even though A_{2A}-like immunoreactivity was readily detectable in the caudate putamen (CP), where A_{2A}R expression is high, it was hardly detectable in either DRG (Fig. 4A, paper II) or skin (not shown). Importantly, the weak fluorescence was similar in DRG of A_{2A}R^{-/-} compare to wild-type mice. This was even more evident in skin samples from the mouse paw, where background immunoreactivity was comparable in wild-type and A_{2A}R^{-/-} mice (not shown). In contrast, the prominent A_{2A}-like immunoreactivity detected in mouse caudate putamen was eliminated in the mice lacking the adenosine A_{2A}R (Fig. 4A, right panel, paper II), underlining the specificity of the antibody. Thus, from the immunohistochemistry data, we conclude that the expression levels of A_{2A}R in DRG is much lower than in the CP. Employing real-time PCR, on the other hand, we found that A_{2A}R mRNA is detected in mouse DRG to an extent similar to A_{2B}R mRNA, but far less than A₁R mRNA. A₃R mRNA was almost undetectable (Fig. 4B, paper II). Comparable real-time PCR studies using cDNA from mouse CP resulted in a 2^{- Δ ct} value for A_{2A}R expression that was 0.096 (i.e. about two orders of magnitude higher than in DRG) supporting our findings from the immunohistochemistry on lower levels of A_{2A}R expression in the DRG.

4.3 SEX DIFFERENCES IN THE DEVELOPMENT OF ALLODYNIA IN RATS AFTER SPINAL CORD INJURY (PAPER III)

In this study, we assessed sex differences in the development of acute allodynia in rats after photochemically-induced spinal cord injury and the impact of the stage of the estrous cycle at the time of injury.

4.3.1 Sex differences in acute allodynia

The vocalization threshold to mechanical stimulation of the flank and upper back area in normal rats was 80-100 g with no significant difference between males and females. Within 1 day after spinal cord irradiation for 5 or 10 min, female rats showed markedly decreased response threshold to mechanical stimulation in these regions (Fig. 1A, B, paper III). In contrast, there was no significant decrease in mechanical response threshold in male rats after 5 min irradiation (Fig. 1A, paper III). After 10 min irradiation, male rats also showed significant decrease in vocalization threshold (Fig. 1B, paper III). There was a significant sex difference between males and females after 10 min irradiation with females having lower threshold and slower recovery (Fig. 1B, paper III).

4.3.2 No impact of estrous cycle

Estrous stage was controlled in female rats at the time of the spinal cord injury and no significant differences were observed in baseline vocalization threshold and mechanical hypersensitivity after spinal cord injury among three groups of female rats irradiated at different stages of the estrous cycle (Fig. 2, paper III).

4.3.3 Sex difference in acute allodynia is not due to difference in the extent of injury

Motor deficits were evaluated and morphological analysis was conducted after spinal cord injury to determine if sex difference after spinal cord injury was due to different magnitude of injury in male and female rats. Both male and female rats developed moderate neurological motor deficits after 5 or 10 min spinal cord irradiation. There was no significant difference in combined neurological scores between males and females (Fig. 3A, Paper III). Morphological comparison was made in rats after 10 min spinal cord

irradiation which produced moderate injury to dorsal spinal cord (Fig. 3B, Paper III). No significant differences were observed between males and females in the magnitude of the injured area in the epicenter or to the length of injury (Fig.4, Paper III).

4.4 SEX DIFFERENCES IN THE DEVELOPMENT OF ALLODYNIA IN RATS AFTER INFRAORBITAL NERVE INJURY (PAPER IV)

In this study, we assessed sex differences in the development of localized and spread mechanical allodynia in rats after infraorbital nerve injury and the impact of estrous cycle at the time of and after injury.

4.4.1 Baseline response threshold to mechanical stimulation

A significant difference in baseline threshold to mechanical stimulation was found between male and female rats both in the facial and at the upper flank region (Fig. 1A, paper IV) with normal females having significantly lower threshold on the face and upper flank region compared to males. Females tested at different stages of estrous cycle did not show significant difference in baseline response threshold on either the face or upper flank (Fig. 1A, B, paper IV).

4.4.2 Sex difference in the development of localized and spread allodynia

After infraorbital nerve injury, both males and females developed mechanical hypersensitivity on the ipsilateral face and upper flank and back region. The hypersensitivity was significantly more severe and prolonged in females (Fig. 2A, B, paper IV). ANOVA with repeated measurement indicated a significant overall difference between the two sexes during the observation period and there was an interaction between sex and time (Fig. 2A, B, paper IV).

4.4.3 Lack of impact by estrous stage on mechanical hypersensitivity after infraorbital nerve injury

When the females were divided into the three different estrous stages at the time of irradiation, there was no significant difference in the pattern of hypersensitivity development on the face and upper flank among the groups (Fig. 3A, B, paper IV). During weeks 1-3 and 12-14 after infraorbital nerve injury, hypersensitivity on the face and flank were tested daily for 15 days to cover 3 continuous estrous cycles. Comparison

was made among each estrous stage both in face and upper flank region. After injury, only 10% of the females exhibited regular cycles (data not shown). However, it was still possible to identify various estrous stages through vaginal smear. No significant difference of mechanical hypersensitivity was found in the face or upper flank region across the estrous stages (Fig. 4A, B, paper IV). The hypersensitivity on the face was significantly less during weeks 12-14 compared to weeks 1-3 after the injury. In contrast, the hypersensitivity on the flanks during weeks 12-14 was similar to weeks 1-3, suggesting spread hypersensitivity was more persistent than localized hypersensitivity.

5 DISCUSSION

5.1 SEX DIFFERENCE IN PAIN SENSITIVITY IN RODENTS

Sex difference in nociceptive response in rodents, with females generally being more sensitive, has been shown in previous studies using several nociceptive assays, including the von Frey test as used in our studies (Mogil et al, 2000; Chesler et al, 2002; Chillingworth et al, 2006). In paper I, such difference again was demonstrated in both strains of wild-type mice for estrogen receptor knock-out mice in baseline paw withdrawal threshold to mechanical stimulation. In paper II, however, we did not observe a significant sex difference in baseline mechanical pain threshold in wild-type mice and $A_{2A}R^{-/-}$ mice. Similarly we also noted that in Sprague-Dawley rats, sex difference was not readily observed for basal mechanical pain threshold. In study IV, there was a significant sex differences for response threshold for mechanical stimulation on the face and upper back region whereas in study III, such difference was not significant for the trunk and lower back region. Influence of site of testing on determination of sex difference has also been previously noted in our and other laboratories (Pajot et al, 2003; Dominguze et al, 2009). It is thus suggested that although sex difference in basal mechanical pain threshold can be demonstrated in rodent, the magnitude of such difference is moderate and subjected to influence by many factors. One of such factor is genetic as it has been shown that sex difference in pain responses in rodents has been shown to be strain dependent (Kest et al, 2000; Deleo and Rutkowski, 2000; LaCroix-Fralish, 2005a) which may explain the lack of sex difference observed in wild-types for $A_{2A}R^{-/-}$ mice as it has different genetic background than the wild-types for $ER\alpha^{-/-}$ and $ER\beta^{-/-}$ mice.

In study I, we also observed that after carrageenan-induced inflammation, the paw withdrawal threshold in female mice was significantly lower than that in males while in study II, the sex difference did not reach significance after inflammation. This may also be explained by genetic differences between the strains. Another point which needs to be considered is that since there is a sex difference in baseline paw withdrawal threshold with females having low threshold, the relative change after inflammation may not show sex difference. However, we consider it is more relevant to consider the actual threshold after inflammation to determine sex difference as in a clinical setting, pain sensitivity before diseases is not usually considered as a factor.

5.2 THE INVOLVEMENT OF ER α AND ER β IN SEX DIFFERENCE IN PAIN

As mentioned in paper I, sex difference was demonstrated in both strains of wild-type mice in baseline to mechanical stimulation. Male ER α ^{-/-} and ER β ^{-/-} had similar baseline mechanical response threshold as their wild-type controls. However, female ER α ^{-/-} and ER β ^{-/-} exhibited significantly elevated response threshold, comparable to males, under normal conditions. Thus, the sex difference observed in baseline between wild-type males and females was eliminated in the knock-outs, suggesting a role of ER α or ER β in determining sex difference in baseline nociception.

The same direction of sex difference in carrageenan-induced mechanical hyperalgesia was also observed in wild-type mice. Both male and female wild-type controls developed similar extent of paw edema, suggesting that the increased mechanical hypersensitivity in females does not seem to be caused by an increased inflammatory response. Again, such sex difference was eliminated in ER α ^{-/-} and ER β ^{-/-}. Our results agree to some extent with those of Spooner et al. (2007) in which female ER β ^{-/-} mice showed reduced response in the formalin test compared to wild-type controls. These authors did not find that ER β ablation influenced hot plate latency in females, although there was a sex difference with females being more sensitive than males. This difference from our results may be due to the difference in stimulation and tests used. The lack of phenotypic changes in the male knock-outs suggests that the difference seen in the females does not reflect a generalized action of estrogen or differences in background genes, but rather a sex-specific role of estrogen in mechanical nociception and important in determining sex differences.

No sex difference was seen in mechanical hypersensitivity after partial sciatic nerve injury in wild-type or knock-out mice. This is similar to our previous results in rats (Dominguez et al, 2009). Sex difference in the development of neuropathic pain-like behaviors after nerve injury in rodents has not been consistently reported and may be related to the strains of animal used and experimental models (Deleo and Rutkowski, 2000; LaCroix-Fralish et al, 2005b). The lack of difference between the knock-out male and females suggests again that the role of estrogen receptors in mechanical nociception is sex-specific and important in determining sex differences. It should be noted that in the clinical setting sex differences are observed in the prevalence of many neuropathic pain conditions (Greenspan et al, 2007).

It is not clear which estrogen and its receptors mediate sex difference in mechanical nociception in mice. We also do not know whether the two estrogen receptors play the same or different roles in this process, despite similar phenotypes. Exogenously applied estrogen has been shown to increase pain response in rodents, although the effect is not sex-specific (Aloisi and Ceccarelli, 2000; Craft et al, 2004). The increase in mechanical response threshold in female knock-outs may be due to the removal of an ongoing activational excitatory effect by estrogen in adult female mice. Estrogen receptors have different functions during neurogenesis. ER α activation induces increased length and number of neurites, whereas ER β activation modulates only neurite length (Papka et al, 2003). ER β is also essential for morphogenesis and maintenance of the spinal dorsal horn interneurons (Fan et al, 2007). Thus, the phenotype observed in the female knock-outs may also be due to the developmental changes in female mice brought about by the organizational effect of estrogen during development.

5.3 A_{2A}R ACTIVATION IN INFLAMMATORY HYPERALGESIA AND SEX DIFFERENCES IN PAIN

We observed that A_{2A}R^{-/-} mice and their wild-type controls displayed similar baseline nociceptive response to mechanical stimulation, which is in contrast to the A₁R^{-/-} mice that showed reduced mechanical threshold under normal conditions in a previous study (Johansson et al, 2001; Wu et al, 2005). This suggests that unlike the A₁R, the A_{2A}R may not be involved in determining mechanical pain threshold under normal conditions.

After inflammation, both A_{2A}R^{-/-} and wild-type mice developed mechanical hypersensitivity after 24 h that was associated with paw edema. The magnitude of hypersensitivity was significantly reduced in A_{2A}R^{-/-} mice compared to wild-types. The extent of paw edema was similar between A_{2A}R^{-/-} and the wild-type mice, indicating that the reduction in mechanical hypersensitivity in the A_{2A}R^{-/-} mice is not directly related to the extent of peripheral inflammation. In a previous study, we observed that A₃R^{-/-} mice exhibited a reduction of inflammatory hyperalgesia to heat stimulation, which was related to the extent of inflammation in the paw (Wu et al, 2002).

Although no sex difference was found in inflammatory hyperalgesia and paw edema in wild-type or A_{2A}R^{-/-} mice, a pharmacological sex difference were found in response to an

A_{2A}R agonist and antagonist. The selective A_{2A}R antagonist ZM-241,385 reduced inflammatory hypersensitivity upon direct local injection, which was more effective in females. In line with this observation, we found local injection of the A_{2A}R agonist CGS 21680 produced a hyperalgesic effect, which was again more profound in the wild-type females than in males. This indicates that the A_{2A}R is involved in the inflammatory hyperalgesic response to carrageenan and a sex difference in response to A_{2A}R activation in the periphery. However, sex differences in response to A_{2A}R activation did not appear to be sufficiently large to impact sex differences in inflammatory hypersensitivity in the present study.

We do not know which type of cell(s) that is responsible for the effect of A_{2A}R activation on pain sensitivity. It is well known that A_{2A}Rs are present on many types of cells in the immune system (Fredholm et al, 2001). The present data confirm that cells in the DRG, perhaps neurons, express A_{2A}R mRNA, and hence probably the receptor. The expression level is, however, not high. Despite this uncertainty the results suggest that peripheral actions of A_{2A}R antagonists may be relevant in controlling some types of pain. Caffeine (and its metabolites theophylline and paraxanthine) are A_{2A}R antagonists, and caffeine is a known additive in several pain medications (Sawynok, 1998).

5.4 SEX DIFFERENCE IN THE DEVELOPMENT OF NEUROPATHIC PAIN-LIKE BEHAVIORS IN RATS

We conducted two neuropathic-pain models in rats with ischemic spinal cord injury and infraorbital injury in paper III and paper IV respectively. In paper III, we showed a significant sex difference in the development of acute allodynia-like behavior with female rats being more sensitive than male rats after ischemic spinal cord injury. This sex difference cannot be explained by the small and insignificant difference in mechanical sensitivity between the sexes before injury, nor by differences in the extent of injury. Our results agree with that of Gorman et al. (2001) who showed, using a rat model of spinal cord injury-induced spontaneous pain (the excessive grooming behavior), that although the characteristics of such behavior were similar between males and females, the female rats developed grooming with less spinal damage than males. Similarly, in paper IV, a significant sex difference was also found in the development of localized and wide spread mechanical hypersensitivity in rats after infraorbital nerve injury. These findings agree with our previous results using the same model (Dominguez et al, 2009).

One interesting observation from the work presented in Study III and IV is that the sex differences appear to be more prominent in wide-spread allodynia after spinal cord injury and infraorbital nerve injury (See also Dominguez 2009). As spinal cord injury-induced acute allodynia has been shown to be caused primarily by a dysfunction of the GABAergic inhibitory system in spinal cord (Hao et al, 1991 and 1992; Zhang et al, 1994), these results suggest that sex differences in the spinal GABAergic system may be an important underlying mechanism in sex differences in pain after spinal cord injury. Previous studies have shown that there is a close association between sex hormones and GABA in many aspects of neural function (Berkley, 1997). Estrogen increases GABA release, upregulates GABA receptors and increases the activity of glutamate acid decarboxylase (Kelly et al, 1992; Weiland, 1992; Saleh and Connell, 2003).

It is unclear what the mechanisms for sex difference after infraorbital injury. In the trigeminal region, there is an increased expression of glutamate NR2B subunit in masseter ganglion neurons in female rats compared with male rats after glutamate injection (Dong et al, 2007). Furthermore, greater afferent discharge has been found in females than males after glutamate injection into this area, which may be involved in the observed sex difference in the trigeminal region (Carins et al, 2002; Dong et al, 2007). Generally, the plasma level of sex hormones is not necessarily correlated with the level within the CNS levels (e.g. PAG, spinal cord and DRG) since sex steroids can be synthesized locally in the spinal cord (Murphy and Hoffman, 2001; Evrard and Balthazart, 2004; Evrard, 2006). It might be also the case for trigeminal complex due to the significant expression of steroidogenic enzyme (Horvath and Wikler, 1999). This might at least partly explain the absence of significant correlations between estrous phase and development of mechanical hypersensitivity. Clearly, further studies are needed to clarify the mechanisms in sex differences after spinal cord injury and infraorbital nerve injury.

5.5 ESTROUS STAGE AND THE DEVELOPMENT OF NEUROPATHIC PAIN-LIKE BEHAVIORS

The baseline sensitivity to mechanical stimuli of female rats was also tested at each estrous stage before nerve injury in papers III and IV. In paper III, the baseline nociception of the trunk area did not change across different estrous stages. Similarly, in paper IV the basal nociception in facial area and upper flank also did not exhibit

significant change related to different estrous stage. This suggested that different estrous stage has little effect on basal nociception under normal conditions in our testing regime.

Due to the fact that some painful conditions are related to menstrual cycle in humans (Greenspan et al, 2007), it is of interest to study whether there are estrous stage related pain in our experimental pain models. Studies with ovariectomized female rodents suggested a facilitatory role for female sex hormones in the development of pain-related behaviors following sciatic nerve and spinal cord injury (Colye et al, 1996; Gorman et al, 2001). From this perspective, we controlled the estrous stage at the time of injury and/or two time points after nerve injury to see if the development of hypersensitivity was affected by different estrous stages. In paper III, we observed that estrous stages at the time of spinal cord injury did not affect development of acute allodynia in female rats. In lines with this observation, different estrous stage at the time of infraorbital nerve irradiation was not found to influence the severity and duration of the hypersensitivity in either face or upper flank region in paper IV. This indicates that the magnitude of hypersensitivity is not dependent on specific estrous phase at the onset of the injury.

The changes of hypersensitivity across the estrous cycle were also examined in female rats in paper IV. The variation of hypersensitivity across the estrous cycle during a 15-day evaluation at 1-3 weeks and 12-14 weeks post nerve injury did not reveal an impact of estrous stage on mechanical sensitivity. However, the animals started to recover from the injury at 12-14 weeks at the face region, but not in the flank areas involved in spread sensitivity. Modulation of nociceptive behaviors in different stages of the estrous cycle has been reported previously in some, but not all, studies (Marks and Hobbs, 1972; Frey et al, 1993; Martinez-Gomez et al, 1994; Vincler et al, 2001). Vincler et al. (2001) showed that modulation of nociceptive behaviors during the estrous cycle is dependent on the type and duration of stimulus used. Thus it could be the same case in paper III and IV. Thus, the impact of estrous cycle on normal nociception and hypersensitivity to mechanical stimulus seems to be minimal in our testing paradigm.

6 CONCLUSIONS

1. ER α and ER β are involved in determining sex difference in mechanical sensitivity under normal condition and after inflammation, but they do not appear to have a role in the development of mechanical hypersensitivity after sciatic nerve injury.
2. Activation of peripheral adenosine A_{2A}R is involved in mechanical hyperalgesia after inflammation and the effect of A_{2A}R activation is more profound in females than in males.
3. Females develop more profound acute mechanical allodynia after spinal cord injury which is independent of the extent of tissue injury or specific estrous phase at the time of injury.
4. There are sex differences in the development of localized and spread mechanical hypersensitivity after infraorbital injury in rats. However, there appears to be no change in hypersensitivity across estrous cycle in females.

7 ACKNOWLEDGEMENTS

These studies were performed at the Department of Clinical Neuroscience and Department of Physiology and Pharmacology. I would like to express my sincere gratitude to all the people who have helped me in every aspect of my Ph.D education and life in Sweden. In particular, I would like to thank:

My supervisor, Docent Xiao-Jun Xu, for accepting me to work with you. For generously sharing your profound knowledge in pain research. For your enthusiastic discussion and advices about science and carrier. Your positive, constructive ideas and careful analysis have led and nourished me to develop as a better scientist. Working with you has been a great honor to me. A four-year education is not long enough to learn from you not only about science but also about philosophy in life.

My co-supervisor, Prof. Zsuzsanna Wiesenfeld-Hallin, for giving me this great opportunity to work in your lab. For your outstanding scientific ideas and professional excellence in pain research. For your great support, encouragement, and perfect pace-control of the thesis. For the family-like working environment you created. All the warm hugs and patting on the shoulders are unforgettable! Working with you is a great honor and a pleasant journey. Special thanks to Associate Prof. Rolf Hallin for your hospitality and kindness during every visit to your home.

Dr. Jing-Xia Hao, my co-author and tutor in experimental techniques, for passing and sharing your excellent skills. For your advices and help in all practical matters. For taking care of me and my family. For introducing me to the delight of Peking Opera and making me “addicted” to this fantastic traditional Chinese art.

Prof. Bertil Fredholm, at the Department of Physiology and Pharmacology, thank you for all the discussions, guidelines, profound knowledge in the field of research on adenosine. I also appreciate the help of Frank Brand in generating the confocal images of DRGs and Eva Lindgren in performing the real-time PCR. Docent. Gunnar Schulte at the Department of Physiology and Pharmacology, for your valuable contribution, comments and corrections for the second paper.

Prof. Kaj Fried at Department of Department of Dentistry (DENTMED), thanks for being my mentor, all the references you selected for me to read, and for your always being there whenever I need a help.

Prof. Patrik Ernfors at Department of Medical Biochemistry and Biophysics, for the exciting collaboration projects and opening a door for me to deepen my knowledge in neuroscience. The opportunity you give me to do a post doc at your lab is a strong inspiration for me to develop my scientific career.

Prof. Stefan Eriksson, head of the Department of Physiology and Pharmacology, for bring our group to the Department and for creating a pleasant working environment.

Special thanks Dr Hong Wei from Institute of Biomedicine and Physiology, University of Helsinki, for introducing me to Prof. Zsuzsanna Wiesenfeld-Hallin's Lab when I was a master student in Shanghai. Thank you very much for your help and honest friendship. Without you, I would not be able to be guided by world-famous scientists.

Prof. Wu Chunfu and Associate Prof. Liu Zheng, Department of Pharmacology, Shenyang Pharmaceutical University, China, for introducing me to medical research and your help in the early days of my research career.

Prof. Ernst Brodin, Assistant Prof. Camilla Svensson and Prof. Linda Sorkin from University of California, USA, for your discussion in FyFa around journal clubs.

Past and current members of the group: Daniel Andersson for the pleasant collaboration in paper III. Dr Wei-Ping Wu, for being such a nice friend like a big sister, the time with you is always full of laughs, and you always make me feel very good about myself. Anna-Karin Persson for your kindness during my early days in Sweden and wonderful time spent together during our conferences. Tianle Gao, for your friendship both at and after work, and your generous help with the experiment when I was on vacation and the tough times when I was suffering low back pain.

Dr. Cecilia Dominguez, what can I say? You are like a sister and a friend, and always give efficient help, comfort, and encouragement whenever I am upset with both work and personal life. Your patience and calm always make me comfortable and refresh. Thanks

for inviting me to your wedding and all the parties at your home which helped me go through the tough and lonely days in Sweden. Special thanks to your husband Marcello, for the elegant and fancy Swedish cousin, warm welcome and funny jokes every time at your home.

Marina Franck and Isabelle Bachy at Department of Medical Biochemistry and Biophysics, thanks for transportation of the testing facilities and the nice discussion with the two collaborating papers.

All the personnel in the animal department at Clinical Neuroscience and FyFa, for taking such good care of the animals. All the administration personnel at department of Physiology and Pharmacology, in particular, Camilla Fors Holmberg, Freddie Hellström, Peter Wolf, Renée Andersson and Micke Elm, thanks that you are always ready to help with any problems.

To all my Chinese friends, whom I met in Sweden, for helping me, sharing life stories and having a lot fun: Zhu Shun-Wei, Yu Jiang, Yan Hong-Mei, Yu Hong, Xue Yuan and Hu Ying-Wei; Wang Xin, Zheng Xiao-Feng, Wan Min, Fang Fang, Shu Nanjiang, for so much fun when talking to you; Huang Li-Yue, Wang Ying-Qing, Qi Hongshi, Zhang Xiaoqun, Zhang Xingmei, Song Zhiyang, Wang Xiaoda for sharing the funny jokes during lunch and in KI bus.

To all my Peking Opera team members: Wu Jiang-Yan, it is a great luck to learn opera with you. Xu Bo, Wang Xiao, Qian Yi, Liu Ying, Liu Yun, being together with you during every opera practice is such a happy thing.

Special thanks to my family: grandma and grandpa, who brought me up as your favorite grandkid, for your unconditional love during my childhood. My parents and sister, thanks for all the love, kindness, wisdom, sacrifice and encouragement from you. You are always my home whenever I need a comfort. My brother-in-law, thanks for your support. My niece, Tongtong, thanks for your pleasant words which makes me happy.

Jinling, my husband and best friend, thank you for your solid support, endless patience and love.

8 REFERENCES

- Aloisi AM, Ceccarelli I. Role of gonadal hormones in formalin-induced pain responses of male rats: modulation by estradiol and naloxone administration. *Neuroscience* 2000;95:559–566.
- Aloisi AM, Craft RM, Marchand S. The effects of gonadal hormones on pain. In: Flor H, Kalso E, and Dostrovsky JO (Eds.) *Proceedings of the 11th World Congress on Pain*. IASP Press, Seattle, 2006, pp. 301-308.
- Amandusson A, Hallbeck M, Hallbeck AL, Hermanson O, Blomqvist A. Estrogen-induced alterations of spinal cord enkephalin gene expression. *Pain* 1999;83:243–248.
- Amandusson A, Hermanson O, Blomqvist A. Colocalization of oestrogen receptor immunoreactivity and preproenkephalin mRNA expression to neurons in the superficial laminae of the spinal and medullary dorsal horn of rats. *Eur J Neurosci* 1996;8:2440-2445.
- Ascenzi P, Bocedi A, Marino M. Structure-function relationship of estrogen receptor alpha and beta: impact on human health. *Mol Aspects Med* 2006;27:299-402.
- Barrett AC, Smith ES, Picker MJ. Sex-related differences in mechanical nociception and antinociception produced by mu- and kappa-opioid receptor agonists in rats. *Eur J Pharmacol* 2002;452:163-173.
- Baron R, Binder A, Wasner G. Neuropathic pain: diagnosis, pathophysiological mechanisms, and treatment. *Lancet Neurol* 2010;9:807-819.
- Basbaum A Bushnell C, Devor M. Pain: Basic Mechanisms. In: Castro-Lopes J, Raja S and Schmelz M (Eds.) *Un updated review, Refresher course syllabus*. IASP press, Seattle, 2008, pp. 3-10.
- Basbaum AI, Bautista DM, Scherrer G, Julius D. Cellular and molecular mechanisms of pain. *Cell* 2009;16:267-284.
- Basbaum AI, Jessell T. The perception of pain. In: Kandel ER, Schwartz J, and Jessell T (Eds.) *Principles of Neuroscience*. Appleton and Lange, New York, 2000, pp. 472–491.
- Bennett GJ, Xie YK. A peripheral mononeuropathy in rat that produces disorders of pain sensation like those seen in man. *Pain* 1988;33:87-107.
- Berglund LA, Simpkins JW. Alterations in brain opiate receptor mechanisms on proestrous afternoon. *Neuroendocrinology* 1988;48:394-400.
- Berkley KJ. Sex differences in pain. *Behav Brain Sci* 1997;20:371-380.
- Berkley KJ, Zalzman SS, Simon VR. Sex and gender differences in pain and inflammation: a rapidly maturing field. *Am J Physiol Regul Integr Comp Physiol* 2006;291:R241-244.
- Boddeke EW. Involvement of chemokines in pain. *Eur J Pharmacol* 2001;429:115-119.

- Borzan J, Fuchs PN. Organizational and activational effects of testosterone on carrageenan-induced inflammatory pain and morphine analgesia. *Neuroscience* 2006;143:885-893.
- Brandes JL. The influence of estrogen on migraine: a systematic review. *JAMA* 2006;295:1824-1830.
- Brown, AG. Organization in the Spinal Cord: The Anatomy and Physiology of Identified Neurones. In: Brown AG, Springer-Verlag, Berlin, 1981.
- Butcher RL, Collins WE, Fugo NW. Plasma concentration of LH, FSH, prolactin, progesterone and estradiol-17 β throughout the 4-day estrous cycle of the rat. *Endocrinology* 1974; 94:1704-1708.
- Butler TR, Smith KJ, Berry JN, Sharrett-Field LJ, Prendergast MA. Sex differences in caffeine neurotoxicity following chronic ethanol exposure and withdrawal. *Alcohol Alcohol* 2009;44:567-574.
- Butler TR, Smith KJ, Self RL, Braden BB, Prendergast MA. Sex differences in the neurotoxic effects of adenosine A1 receptor antagonism during ethanol withdrawal: reversal with an A1 receptor agonist or an NMDA receptor antagonist. *Alcohol Clin Exp Res* 2008;32:1260-1270.
- Cairns BE, Gazerani P. Sex-related differences in pain. *Maturitas* 2009;20:292-296.
- Cairns BE, Gambarota G, Svensson P, Arendt-Nielsen L, Berde CB. Glutamate-induced sensitization of rat masseter muscle fibers. *Neuroscience* 2002;109:389-399.
- Cervero F, Iggo A, Ogawa H. Nociceptor-driven dorsal horn neurones in the lumbar spinal cord of the cat. *Pain* 1976;2:5-24.
- Chanda ML and Mogil JS. Sex differences in the effects of amiloride on formalin test nociception in mice. *Am J Physiol Regul Integr Comp Physiol* 2006;291:R335-R342.
- Chen JF, Huang Z, Ma J, Zhu J, Moratalla R, Standaert D, Moskowitz MA, Fink JS, Schwarzschild MA. A(2A) adenosine receptor deficiency attenuates brain injury induced by transient focal ischemia in mice. *J Neurosci* 1999;19:9192-9200.
- Chesler EJ, Wilson SG, Lariviere WR, Rodriguez-Zas SL, Mogil JS. Identification and ranking of genetic and laboratory environment factors influencing a behavioral trait, thermal nociception, via computational analysis of a largedata archive. *Neurosci Biobehav Rev* 2002;26:907-923
- Chillingworth NL, Morham SG, Donaldson LF. Sex differences in inflammation and inflammatory pain in cyclooxygenase-deficient mice. *Am J Physiol Regul Integr Comp Physiol* 2006;291:R327-334.
- Christensen MD, Everhart AW, Pickelman JT, Hulsebosch CE. Mechanical and thermal allodynia in chronic central pain following spinal cord injury. *Pain* 1996;68:97-107.
- Chunn JL, Young HW, Banerjee SK, Colasurdo GN, Blackburn MR. Adenosine-dependent airway inflammation and hyperresponsiveness in partially adenosine deaminase-deficient mice. *J Immunol* 2001;167:4676-4685.

- Cicero TJ, Nock B, O'Connor L, Meyer ER. Role of steroids in sex differences in morphine-induced analgesia: activational and organizational effects. *J Pharmacol Exp Ther* 2002;300:695-701.
- Clemente JT, Parada CA, Veiga MC, Gear RW and Tambeli CH, Sexual dimorphism in the antinociception mediated by kappa opioid receptors in the rat temporomandibular joint. *Neurosci Lett* 2004;372:250–255.
- Cook CD, Barrett AC, Roach EL, Bowman JR, Picker MJ. Sex-related differences in the antinociceptive effects of opioids: importance of rat genotype, nociceptive stimulus intensity, and efficacy at the mu opioid receptor. *Psychopharmacology* 2000;150:430-442.
- Cooke B, Hegstrom CD, Villeneuve LS, Breedlove SM. Sexual differentiation of the vertebrate brain: principles and mechanisms. *Front Neuroendocrinol* 1998;19:323-362.
- Craft RM. Sex differences in opioid analgesia: "from mouse to man". *Clin J Pain* 2003;19(3):175-186.
- Craft RM, Mogil JS, Aloisi AM. Sex differences in pain and analgesia: the role of gonadal hormones. *Eur J Pain* 2004;8:397–411.
- Craft RM. Modulation of pain by estrogens. *Pain* 2007;132:S3-12.
- Crowley C, Spencer CD, Nishimurai MC. Mice lacking nerve growth factor display perinatal loss of sensory and sympathetic neurons yet develop basal forebrain cholinergic neurons. *Cell* 1994;76:1001–1011.
- Coyle DE, Sehlhorst CS, Behbehani MM. Intact female rats are more susceptible to the development of tactile allodynia than ovariectomized female rats following partial sciatic nerve ligation (PSNL). *Neurosci Lett* 1996;12:37-40.
- DeLeo JA, Rutkowski MD. Gender differences in rat neuropathic pain sensitivity is dependent on strains. *Neurosci Lett* 2000;282:197–199.
- Derbyshire SWG, Nichols TE, Firestone L, Townsend DW, and Jones AKP. Gender differences in patterns of cerebral activation during equal experience of painful laser stimulation. *J Pain* 2002;3:401–411,
- D'Mello R, Dickenson AH. Spinal cord mechanisms of pain. *Br J Anaesth* 2008;101(1):8-16.
- Deuchars SA, Brooke RE, Deuchars J. Adenosine A1 receptors reduce release from excitatory but not inhibitory synaptic inputs onto lateral horn neurons. *J Neurosci* 2001;21:6308-6320.
- Deroo BJ, Korach KS. Estrogen receptors and human disease. *J Clin Invest* 2006;116:561-570.
- Dina OA, Gear RW, Messing RO, Levine JD. Severity of alcohol-induced painful peripheral neuropathy in female rats: role of estrogen and protein kinase (A and Ce). *Neuroscience* 2007;145:350–356.

- Dolphin AC, Forda SR, Scott RH. Calcium-dependent currents in cultured rat dorsal-root ganglion neurons are inhibited by an adenosine analog. *Journal of Physiology-London* 1986;373:47-61.
- Dominguez CA, Kouya PF, Wu WP, Hao JX, Xu XJ, Wiesenfeld-Hallin Z. Sex differences in the development of localized and spread mechanical hypersensitivity in rats after injury to the infraorbital or sciatic nerves to create a model for neuropathic pain. *Gend Med* 2009;6:225-234.
- Dong XD, Mann MK, Kumar U, Svensson P, Arendt-Nielsen L, Hu JW, Sessle BJ, Cairns BE. Sex-related differences in NMDA-evoked rat masseter muscle afferent discharge result from estrogen-mediated modulation of peripheral NMDA receptor activity. *Neuroscience* 2007;146:822-832.
- Dunwiddie TV, Masino SA. The role and regulation of adenosine in the central nervous system. *Annual Review of Neuroscience* 2001;24:31-55.
- Eldrup E, Lindholm J, Winkel P. Plasma sex hormones and ischemic heart disease. *Clin Biochem* 1987;20:105-112.
- Ektor-Andersen J, Janzon L, Sjölund B. Chronic pain and the socio-demographic environment: results from the pain clinic at Malmö General Hospital in Sweden. *Clin J Pain* 1993;9:183-188.
- Evrard HC. Estrogen synthesis in the spinal dorsal horn: a new central mechanism for the hormonal regulation of pain. *Am J Physiol Regul Integr Comp Physiol* 2006;291:291-299.
- Evrard HC, Balthazart J. Rapid regulation of pain by estrogens synthesized in spinal dorsal horn neurons. *J Neurosci* 2004;24:7225-7229.
- Fan X, Xu H, Warner M, Gustafsson JA. ERbeta in CNS: new roles in development and function. *Prog Brain Res* 2010;181:233-250.
- Fan XT, Kim HJ, Warner M, Gustafsson JA. Estrogen receptor β is essential for sprouting of nociceptive primary afferents and for morphogenesis and maintenance of the dorsal horn interneurons. *Proc Natl Acad Sci USA* 2007;104:13696-13701.
- Fillingim RB, Edwards RR, Powell T. The relationship of sex and clinical pain to experimental pain responses. *Pain* 1999;83:419-425.
- Fillingim RB, Ness TJ. Sex-related hormonal influences on pain and analgesic responses. *Neurosci Biobehav Rev* 2000;24:485-501.
- Fitzcharles MA, Lussier D, Shir Y. Management of chronic arthritis pain in the elderly. *Drugs Aging* 2010;27:471-490.
- Fredholm BB, IJzerman AP, Jacobson KA, Klotz KN, Linden J. International Union of Pharmacology. XXV. Nomenclature and classification of adenosine receptors. *Pharmacol Rev* 2001;53:527-552.
- Fredholm BB. Adenosine and neuroprotection. *Int Rev Neurobiol* 1997;40:259-280.
- Frey CA, Cuevas Ca, Kanarek RB. Diet and estrous cycle influence pain sensitivity in rats. *Pharmacol Biochem Behav* 1993;45:255-260.

- Gazeliuss B, Cui JG, Svensson M, Meyerson B, Linderöth B. Photochemically induced ischaemic lesion of the rat sciatic nerve. A novel method providing high incidence of mononeuropathy. *Neuroreport* 1996;7:2619-2623.
- Gear RW, Miaskowski C, Gordon NC, Paul SM, Heller PH, Levine JD. Kappa-opioids produce significantly greater analgesia in women than in men. *Nat Med* 1996;2:1248-1250.
- Gear RW, Miaskowski C, Gordon NC, Paul SM, Heller PH, Levine JD. The kappa opioid nalbuphine produces gender- and dose-dependent analgesia and antianalgesia in patients with postoperative pain. *Pain* 1999;83:339-345.
- Godfrey L, Yan L, Clarke GD, Ledent C, Kitchen I, Hourani SM. Modulation of paracetamol antinociception by caffeine and by selective adenosine A2 receptor antagonists in mice. *Eur J Pharmacol* 2006;531:80-86.
- Gorman AL, Yu C-G, Ruenes GR, Daniels L, Yezierski RP. Conditions affecting the onset, severity, and progression of a spontaneous pain-like behavior after excitotoxic spinal cord injury. *J Pain* 2001;2:229-240.
- Greenspan JD, Craft RM, LeResche L, Arendt-Nielsen L, Berkley KJ, Fillingim RB, Gold MS, Holdcroft A, Lautenbacher S, Mayer EA, Mogil JS, Murphy AZ, Traub RJ; Consensus Working Group of the Sex, Gender, and Pain SIG of the IASP. Studying sex and gender differences in pain and analgesia: a consensus report. *Pain* 2007;132:S26-45.
- Gruber CJ, Tschugguel W, Schneeberger C, Huber JC. Production and actions of estrogens. *N Engl J Med* 2002;346:340-352.
- Halldner L, Aden U, Dahlberg V, Johansson B, Ledent C, Fredholm BB. The adenosine A(1) receptor contributes to the stimulatory, but not the inhibitory effect of caffeine on locomotion: a study in mice lacking adenosine A(1) and/or A(2A) receptors. *Neuropharmacology* 2004;46:1008-1017.
- Hao JX, Xu XJ, Aldskogius H, Seiger Å, Wiesenfeld-Hallin Z. Allodynia-like effect in rat after ischaemic spinal cord injury photochemically induced by laser irradiation. *Pain* 1991;45:175-185.
- Hao JX, Xu XJ, Yu YX, Aldskogius H, Seiger Å, Wiesenfeld-Hallin Z. Baclofen reverses the hypersensitivity of dorsal horn wide dynamic range neurons to low threshold mechanical stimuli after transient spinal cord ischemia: implication for a tonic GABAergic inhibitory control upon myelinated fiber input. *J Neurophysiol* 1992;68:392-396.
- Hao JX, Blakeman KH, Yu W, Hulténby K, Xu XJ, Wiesenfeld-Hallin Z. Development of a mouse model of neuropathic pain following photochemically induced ischemia in the sciatic nerve. *Exp Neurol* 2000;163:231-238.
- Hao JX, Yu W, Xu XJ, Wiesenfeld-Hallin Z. Effects of intrathecal vs. systemic clonidine in treating chronic allodynia-like response in spinally injured rats. *Brain Res* 1996; 14: 736:28-34.
- Hogan Q. Animal pain models. *Regional Anesth and Pain Med* 2002;27:385-401.

- Holdcroft A, Berkley KJ, Sex differences in pain and its relief. In: McMahon SB and Koltzenburg M (Eds.) Wall and Melzack's Textbook of Pain, 5th edition. Elsevier, London, 2005, pp. 1181-1198.
- Horvath TL, Wikler KC. Aromatase in developing sensory systems of the rat brain. *J Neuroendocrinol* 1999;11:77-84.
- Hurley RW, Adams MC. Sex, gender, and pain: an overview of a complex field. *Anesth Analg* 2008;107:309-317.
- Hussey MJ, Clarke GD, Ledent C, Hourani SM, Kitchen I Reduced response to the formalin test and lowered spinal NMDA glutamate receptor binding in adenosine A2A receptor knockout mice. *Pain* 2007;129:287-294.
- Johansson B, Halldner L, Dunwiddie TV, Masino SA, Poelchen W, Gimenez-Llort L, Escorihuela RM, Fernandez-Teruel A, Wiesenfeld-Hallin Z, Xu XJ, Hardemark A, Betsholtz C, Herlenius E, Fredholm BB. Hyperalgesia, anxiety, and decreased hypoxic neuroprotection in mice lacking the adenosine A(1) receptor. *Proc Natl Acad Sci USA* 2001;98:9407-9412.
- Kaelin-Lang A, Lauterburg T, Burgunder JM. Expression of adenosine A2a receptor gene in rat dorsal root and autonomic ganglia. *Neuroscience Letters* 1998;246:21-24.
- Kandel ER, Schwartz JH. In: Kandel ER, Schwartz JH and Jessell TM (Eds.) Principles of Neural Science. Elsevier, New York, 1991, p. 388-310.
- Kelly MJ, Loose MD, Ronnekleiv OK, Estrogen suppresses mu-opioid- and GABAB-mediated hyperpolarization of hypothalamic arcuate neurons. *J Neurosci* 1992;12:2745-2750.
- Kest B, Sarton E, Dahan A. Gender differences in opioid-mediated analgesia: animal and human studies. *Anesthesiology* 2000;93(2):539-547.
- Kieffer BL, Gavériaux-Ruff C. Exploring the opioid system by gene knockout. *Prog Neurobiol* 2002;66:285-306.
- Kim SH, Chung JM. An experimental model for peripheral neuropathy produced by segmental spinal nerve ligation in the rat. *Pain* 1992;50:355-63.
- Koehler KF, Helguero LA, Haldosen LA, Warner M, and Gustafsson J A. Reflections on discovery and significance of estrogen receptor beta. *Endocr* 2005;26: 465-478.
- Krege JH, Hodgin JB, Couse JF, Enmark E, Warner M, Mahler JF, Sar M, Korach KS, Gustafsson JA, Smithies O. Generation and reproductive phenotypes of mice lacking estrogen receptor beta. *Proc Natl Acad Sci USA* 1998;95:15677-15682.
- Krinke GJ. Physiology of reproduction. In: Krinke GJ (Ed.) The laboratory rat. Academic Press, Switzerland, 2000, pp. 152-159.
- Krzanowska EK, Ogawa S, Pfaff DW, Bodnar RJ. Reversal of sex differences in morphine analgesia elicited from the ventrolateral periaqueductal gray in rats by neonatal hormone manipulations. *Brain Res* 2002;929:1-9.
- Kumar SP, Movahed A. Gender difference in the incidence of chest pain during adenosine pharmacologic stress testing. *Cardiovas Res Rep* 2002;23:317-318.

- Kupers R, Yu W, Persson JK, Xu XJ, Wiesenfeld-Hallin Z. Photochemically-induced ischemia of the rat sciatic nerve produces a dose-dependent and highly reproducible mechanical, heat and cold allodynia, and signs of spontaneous pain. *Pain* 1998;76:45-59.
- LaCroix-Fralish ML, Rutkowski MD, Weinstein JN, Mogil JS, Deleo JA. The magnitude of mechanical allodynia in a rodent model of lumbar radiculopathy is dependent on strain and sex. *Spine* 2005a;30:1821-1827.
- LaCroix-Fralish ML, Mogil JS. Progress in genetic studies of pain and analgesia. *Annu Rev Pharmacol Toxicol* 2009;49:97-121.
- LaCroix-Fralish ML, Tawfik VL, DeLeo JA. The organizational and activational effects of sex hormones on tactile and thermal hypersensitivity following lumbar nerve root injury in male and female rats. *Pain* 2005b;114:71-80.
- Lariviere, WR, Chesler, EJ, Mogil, JS. Transgenic studies of pain and analgesia: mutation or background phenotype? *J Pharmacol Exp Ther* 2001;297:467-473.
- Ledent C, Vaugeois JM, Schiffmann SN, Pedrazzini T, Yacoubi MEI, Vanderhaeghen JJ, Costentin J, Heath JK, Vassart G, Parmentier M. Aggressiveness, hypoalgesia and high blood pressure in mice lacking the adenosine A2a receptor. *Nature* 1997;388:674-678.
- LeResche L, Mancel L, Sherman JJ, Gandara B, Dworkin SF. Changes in temporomandibular pain and other symptoms across the menstrual cycle. *Pain* 2003;106:253-261.
- LeResche L, Saunders K, Von Korff MR, Barlow W, Dworkin SF. Use of exogenous hormones and risk of temporomandibular disorder pain. *Pain* 1997;69:153-160.
- Levin ER. Plasma membrane estrogen receptors. *Trends Endocrinol Metab* 2009;20:477-482.
- Li J, Perl ER. Adenosine inhibition of synaptic transmission in the substantia gelatinosa. *J Neurophysiol* 1994;72:1611-1621.
- Light AR, Perl ER. Spinal termination of functionally identified primary afferent neurons with slowly conducting myelinated fibers. *Journal of Comparative Neurology* 1979;186:133-150.
- Linden J. Molecular approach to adenosine receptors: receptor-mediated mechanisms of tissue protection. *Annu Rev Pharmacol Toxicol* 2001;41:775-787.
- Lubahn DB, Moyer JS, Golding TS, Couse JF, Korach KS, Smithies O. Alteration of reproductive function but not prenatal sexual development after insertion disruption of the mouse estrogen receptor gene. *Proc Natl Acad Sci USA* 1993;90:11162-11166.
- Malmber AB, Zeitz KP. Studies of pain mechanisms in genetically manipulated mice. In Mogil JS (Ed.) *The genetics of pain, Progress in Pain research and treatment*. IASP Press, Seattle, 2004, pp. 21-48.
- Mantyh PW, Clohisy DR, Koltzenburg M, Hunt SP. Molecular mechanisms of cancer pain. *Nat Rev Cancer* 2002;2:201-209.

- Marchand F, Perretti M, McMahon SB. Role of the immune system in chronic pain. *Nat Rev Neurosci* 2005;6:521-532.
- Marcondes FK, Bianchi GJ, Tanno, AP. Determination of estrous cycle phases of rats: Some helpful considerations. *Braz J Biol* 2002;62:609-614.
- Marks HE, Hobbs, SH. Changes in stimulus reactivity following gonadectomy in male and female rats of different ages. *Physiol Behav* 1972;8:1113-1119.
- Martinez-Gomez M. Cruz Y, Salas M, Hudson R, Pacheco P. Assessing pain threshold in the rat: changes with estrus and time of day. *Physiol Behav* 1994;55:651-657.
- Martin VT, Lipton RB. Epidemiology and biology of menstrual migraine. *Headache* 2008;48:S124-130.
- Martin D, Schoenen J, Delrée P, Gilson V, Rogister B, Leprince P, Stevenaert A, Moonen G. Experimental acute traumatic injury of the adult rat spinal cord by a subdural inflatable balloon: methodology, behavioral analysis, and histopathology. *J Neurosci Res* 1992;32:539-550.
- Merskey H, Bogduk N. Classification of Chronic pain. Descriptions of chronic pain Syndromes and Definitions of pain terms, 2nd Edition, 1994.
- Meyer, RA, Ringkamp, M, Campbell, JN, and Raja, SN. Peripheral mechanisms of cutaneous nociception. In: Wall PD, and Melzack R (Eds.) *Textbook of Pain*. Churchill Livingstone, London, 2008, pp. 3-29.
- Micevych PE, Eckersell CB, Brecha N, Holland KL. Estrogen modulation of opioid and cholecystokinin systems in the limbic-hypothalamic circuit. *Brain Res Bull* 1997;44:335-343.
- Micevych P, Sinchak K. Estrogen and endogenous opioids regulate CCK in reproductive circuits. *Peptides* 2001;22:1235-1244.
- Mogil JS, McCarson KE. Identifying pain genes: bottom-up and top-down approaches. *J Pain* 2000;1:66-80.
- Mogil JS. Interaction between sex and genotype in the mediation and modulation of nociception in rodents. In: Fillingham RB (Ed.). *Sex, gender, and pain*. IASP Press, Seattle, 2000, pp. 25-40.
- Mogil JS, Chesler EJ, Wilson SG, Juraska JM, Sternberg WF. Sex differences in thermal nociception and morphine antinociception in rodents depend on genotype. *Neurosci Biobehav Rev* 2000;24:375-389.
- Mogil JS, Wilson SG, Chesler EJ, Rankin AL, Nemmani KV, Lariviere WR, Groce MK, Wallace MR, Kaplan L, Staud R, Ness TJ, Glover TL, Stankova M, Mayorov A, Hruby VJ, Grisel JE, Fillingim RB. The melanocortin-1 receptor gene mediates female-specific mechanisms of analgesia in mice and humans. *Proc Natl Acad Sci* 2003;100:4867-4872.
- Moulton EA, Keaser ML, Gullapalli RP, Maitra R, Greenspan JD. Sex differences in the cerebral BOLD signal response to painful heat stimuli. *Am J Physiol Regul Integr Comp Physiol* 2006;291:R257-267.

- Mueller SO, Korach KS. Estrogen receptors and endocrine diseases: lessons from estrogen receptor knockout mice. *Curr Opin Pharmacol* 2001;1:613-619.
- Murphy AZ, Ho□man GE. Distribution of gonadal steroid receptor-containing neurons in the preoptic-periaqueductal graybrainstem pathway: a potentia circuit for the initiation of male sexual behavior. *J Comp Neurol* 2001;438:191-212.
- Nelson LR, Bulun SE. Estrogen production and action. *J Am Acad Dermatol* 2001;45:S116-124.
- Ness TJ, Gebhart GF. Colorectal distension as a noxious visceral stimulus: physiologic and pharmacologic characterization of pseudaffective reflexes in the rat. *Brain Res* 1988;450:153-169.
- Osterlund M, Kuiper GG, Gustafsson JA, Hurd YL. Differential distribution and regulation of estrogen receptor-alpha and -beta mRNA within the female rat brain. *Mol Brain Res* 1998;54:175-180.
- Pajot J, Ressot C, Ngom I, Woda A. Gonadectomy induces site-specific differences in nociception in rats. *Pain* 2003;104:367-373.
- Pamuk ON, Cakir N. The variation in chronic widespread pain and other symptoms in fibromyalgia patients. The effects of menses and menopause. *Clin Exp Rheumatol* 2005;23:778-782.
- Paulson PE, Minoshima S, Morrow TJ, Casey KL. Gender differences in pain perception and patterns of cerebral activation during noxious heat stimulation in humans. *Pain* 1998;76:223-229.
- Priest CA, Vink KL, Micevych PE. Temporal regulation by estrogen of beta-preprotachykinin mRNA expression in the rat ventromedial nucleus of the hypothalamus. *Brain Res Mol Brain Res* 1995;28:61-71.
- Papka RE, Mowa CN. Estrogen receptors in the spinal cord, sensory ganglia, and pelvic autonomic ganglia. *Int Rev Cytol* 2003;231:91-127.
- Paller CJ, Campbell CM, Edwards RR, Dobs AS. Sex-based differences in pain perception and treatment. *Pain Med* 2009;10:289-299.
- Porreca F, Ossipov MH, Gebhart GF. Chronic pain and medullary descending facilitation. *Trends Neurosci* 2002;25:319-325.
- Poon A, Sawynok J. Antinociception by adenosine analogs and inhibitors of adenosine metabolism in an inflammatory thermal hyperalgesia model in the rat. *Pain* 1998;74:235-245.
- Quiñones-Jenab V, Jenab S, Ogawa S, Inturrisi C, Pfaff DW. Estrogen regulation of mu-opioid receptor mRNA in the forebrain of female rats. *Brain Res Mol Brain Res* 1997;47:134-138.
- Reeve AJ, Dickenson AH. The roles of spinal adenosine receptors in the control of acute and more persistent nociceptive responses of dorsal horn neurons in the anesthetized rat. *Br J of Pharmacol* 1995;116:2221-2228.
- Ribeiro JA, Sebastião AM, de Mendonça A. Adenosine receptors in the nervous system: pathophysiological implications. *Prog Neurobiol* 2002;68:377-392.

- Riley JL 3rd, Robinson ME, Wise EA, Price DD. A meta-analytic review of pain perception across the menstrual cycle. *Pain* 1999;81:225-235.
- Robertson B, Xu XJ, Hao JX, Wiesenfeld-Hallin Z, Mhlanga J, Grant G, Kristensson K. Interferon-gamma receptors in nociceptive pathways: role in neuropathic pain-related behaviour. *Neuroreport* 1997;8:1311-1316.
- Saleh TM, Connell BJ. Estrogen-induced autonomic effects are mediated by NMDA and GABAA receptors in the parabrachial nucleus. *Brain Res* 2003;973:161-170.
- Sawynok J. Adenosine receptor activation and nociception. *Eur J Pharmacol* 1998;347:1-11.
- Sawynok J, Liu XJ. Adenosine in the spinal cord and periphery: release and regulation of pain. *Prog Neurobiol* 2003;69:313-340.
- Scholz J, Woolf CJ. Can we conquer pain? *Nat Neurosci* 2002;5:1062-1067.
- Schulte G, Robertson B, Fredholm BB, Delander GE, Shortland P, Molander C. Distribution of antinociceptive adenosine A₁ receptors in the spinal cord dorsal horn, and relationship to primary afferents and neuronal subpopulations. *Neuroscience* 2003;121:907-916.
- Seltzer Z, Dubner R, Shir Y. A novel behavioral model of neuropathic pain disorders produced in rats by partial sciatic nerve injury. *Pain* 1990;43:205-218.
- Siddall P, Xu CL, Cousins M. Allodynia following traumatic spinal cord injury in the rat. *Neuroreport* 1995;19:1241-1244.
- Shughrue PJ, Lane MV, Merchenthaler I. Comparative distribution of estrogen receptor- α and - β mRNA in the rat central nervous system. *J Comp Neurol* 1997;388:507-525.
- Smeyne RJ, Klein R, Schnapp A. Severe sensory and sympathetic neuropathies in mice carrying a disrupted Trk/NGF receptor gene. *Nature* 1994;368:246-249.
- Spooner M-F, Robichaud P, Carrier JC, Marchand S. Endogenous pain modulation during the formalin test in estrogen receptor beta knockout mice. *Neuroscience* 2007;150:675-680.
- Stoffel EC, Ulibarri CM, Craft RM. Gonadal steroid hormone modulation of nociception, morphine antinociception and reproductive indices in male and female rats. *Pain* 2003;103:285-302.
- Sugiura Y, Lee CL, Perl E R. Central projections of identified, unmyelinated (C) afferent fibres innervating mammalian skin. *Science* 1987;234:358-361.
- Taleghany N, Sarajari S, DonCarlos LL, Gollapudi L, Oblinger MM. Differential expression of estrogen receptor alpha and beta in rat dorsal root ganglion neurons. *J Neurosci Res* 1999;57:603-615.
- Tall JM, Crisp T. Effects of gender and gonadal hormones on nociceptive responses to intraplantar carrageenan in the rat. *Neurosci Lett* 2004;345:239-241.
- Tracey I. Nociceptive processing in the human brain. *Curr Opin Neurobiol* 2005;15:478-487.

- von Euler M, Seiger A, Sundström E. Clip compression injury in the spinal cord: a correlative study of neurological and morphological alterations. *Exp Neurol* 1997;145:502-510.
- Vinclair M, Maixner W, Vierck CJ, Light AR. Estrous cycle modulation of nociceptive behaviors elicited by electrical stimulation and formalin. *Pharmacol Biochem Behav* 2001;69:315-324.
- Weiland NG. Glutamate acid decarboxylase messenger ribonucleic acid is regulated by estradiol and progesterone in the hippocampus. *Endocrinology* 1992;131:2697-2702.
- Wiesenfeld-Hallin Z. Sex differences in pain perception. *Gend Med* 2005;2:137-145.
- Woolf CJ. Pain: moving from symptom control toward mechanism-specific pharmacologic management; American College of Physicians; American Physiological Society. *Ann Intern Med* 2004;140:441-451.
- Wu WP, Hao JX, Halldner L, Lovdahl C, DeLander GE, Wiesenfeld-Hallin Z, Fredholm BB, Xu XJ. Increased nociceptive response in mice lacking the adenosine A1 receptor. *Pain* 2005;113:395-404.
- Wu WP, Hao JX, Halldner-Henriksson L, Xu XJ, Jacobson MA, Wiesenfeld-Hallin Z, Fredholm BB. Decreased inflammatory pain due to reduced carrageenan-induced inflammation in mice lacking adenosine A3 receptors. *Neuroscience* 2002;114:523-527.
- Xu, XJ, Hao, JX, Andell-Jonsson, S. Nociceptive responses in interleukin-6-deficient mice to peripheral inflammation and peripheral nerve section. *Cytokine* 1997;9:1028-1033.
- Xu XJ and Wiesenfeld-Hallin Z. Applied physiology of neuropathic pain: experimental models and their application in the study of mechanisms and treatment. In: Rice ASC, Warfield CA, Justins D, Eccleston C (Eds.). *Clinical Pain management, Chronic pain*. Arnold, London, 2003, pp. 113-124.
- Xu XJ, Hao JX, Aldskogius H, Seiger A, Wiesenfeld-Hallin Z. Chronic pain-related syndrome in rats after ischemic spinal cord lesion: a possible animal model for pain in patients with spinal cord injury. *Pain* 1992;48:279-290.
- Zubieta JK, Smith YR, Bueller JA, Xu Y, Kilbourn MR, Jewett DM, Meyer CR, Koeppe RA, Stohler CS. Mu-opioid receptor-mediated antinociceptive responses differ in men and women. *J Neurosci* 2002;22:5100-5107.
- Zhang AL, Hao JX, Seiger Å, Xu X-, Wiesenfeld-Hallin Z, Grant G, Aldskogius H. Decreased GABA immunoreactivity in spinal cord dorsal horn neurons after transient spinal cord ischemia in the rat. *Brain Res* 1994;656:187-190.
- Yang JN, Tiselius C, Dare E, Johansson B, Valen G, Fredholm BB. Sex differences in mouse heart rate and body temperature and in their regulation by adenosine A1 receptors. *Acta Physiol* 2007;190:63-75.
- Yoon MH, Bae HB, Choi JI. Antinociception of intrathecal adenosine receptor subtype agonists in rat formalin test. *Anesth Analg* 2005;101:1417-1421.