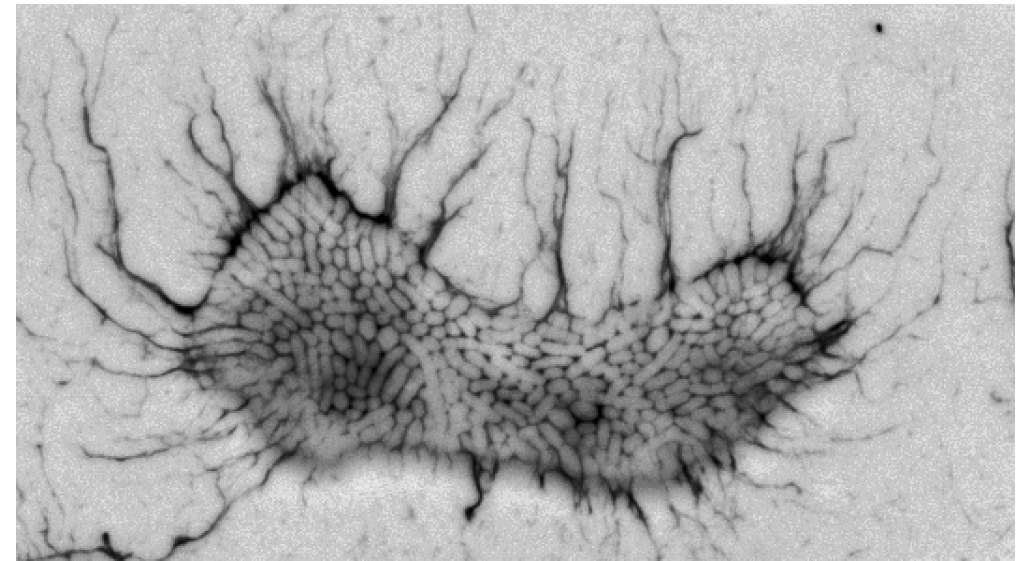


Thesis for doctoral degree (Ph.D.)  
2011

# Regulation of biofilm formation in *Salmonella typhimurium* and *Escherichia coli* Nissle 1917



Cláudia Monteiro



Thesis for doctoral degree (Ph.D.) 2011

Regulation of biofilm formation in *Salmonella typhimurium* and *Escherichia coli* Nissle 1917

Cláudia Monteiro

