



**Karolinska
Institutet**

Karolinska Institutet

<http://openarchive.ki.se>

This is a Peer Reviewed Accepted version of the following article, accepted for publication in *Cancer*.

2016-11-29

Time-dependent risk and predictors of venous thromboembolism in breast cancer patients: a population-based cohort study

Brand, Judith S; Hedayati, Elham; Bhoo-Pathy, Nirmala; Bergh, Jonas; Hall, Per; Humphreys, Keith; Ludvigsson, Jonas F; Czene, Kamila

Cancer. 2017 Feb 1;123(3):468-475.

<http://doi.org/10.1002/cncr.30364>

<http://hdl.handle.net/10616/45411>

If not otherwise stated by the Publisher's Terms and conditions, the manuscript is deposited under the terms of the Creative Commons Attribution-NonCommercial-NoDerivatives License (<http://creativecommons.org/licenses/by-nc-nd/4.0/>), which permits non-commercial re-use, distribution, and reproduction in any medium, provided the original work is properly cited, and is not altered, transformed, or built upon in any way.

© 2016 American Cancer Society. This article may be used for non-commercial purposes in accordance with Wiley Terms and Conditions for Use of Self-Archived Versions. This article may not be enhanced, enriched or otherwise transformed into a derivative work, without express permission from Wiley or by statutory rights under applicable legislation. Copyright notices must not be removed, obscured or modified. The article must be linked to Wiley's version of record on Wiley Online Library and any embedding, framing or otherwise making available the article or pages thereof by third parties from platforms, services and websites other than Wiley Online Library must be prohibited.

Time-dependent risk and predictors of venous thromboembolism in breast cancer patients: a population-based cohort study

Judith S. Brand, PhD ^{1*}, Elham Hedayati, PhD ², Nirmala Bhoo-Pathy, PhD ³, Jonas Bergh, PhD ², Per Hall, PhD ¹, Keith Humphreys, PhD ¹, Jonas F. Ludvigsson, PhD ¹, Kamila Czene, PhD ¹.

¹ Department of Medical Epidemiology and Biostatistics, Karolinska Institutet, Stockholm, Sweden.

² Department of Oncology-Pathology, Karolinska University Hospital, Stockholm, Sweden.

³ Faculty of Medicine, University of Malaya, Kuala Lumpur, Malaysia.

***Corresponding author:**

Judith S. Brand. Department of Medical Epidemiology and Biostatistics, Karolinska Institutet, Nobels Väg 12A, 171 77 Stockholm, Sweden. Email: judith.brand@ki.se; Phone: 0046-8-524-82352; Fax: 0046-8-31 49 75.

Text pages: 24; Tables: 3; Figures: 2; Supplementary Tables: 8; References: 41

Running title: VTE risk in breast cancer patients

Funding support

This work was financed by the Swedish Research Council (2014 -2271); Swedish Cancer Society (CAN 2013/469) and FORTE (2013-0474).

Conflicts of interest disclosures

None.

Author contributions

Judith Brand: study design, analysis and interpretation of data, article preparation and review. Elham Hedayati, Jonas Ludvigsson, Keith Humphreys, Nirmala Bhoo-Pathy, Jonas Bergh and Per Hall: study design, interpretation of data, article review and editing. Kamila Czene: study design, acquisition of data, interpretation of data and article preparation and review.

Precis

- Breast cancer patients are at highest VTE risk within the first year of diagnosis, but remain at 2-fold increased risk many years after.
- Temporal associations with patient, tumor and treatment characteristics provide insight into the time-dependent etiology of VTE in breast cancer patients.

Abstract

Background: Venous thromboembolism (VTE) is a serious complication of cancer and its treatment.

We assessed the risk and clinical predictors of VTE in breast cancer patients by time since diagnosis.

Methods: A Swedish population-based study including 8338 breast cancer patients diagnosed from 2001-2008 in the Stockholm-Gotland region, with complete follow-up until 2012. Incidence of VTE was compared with that of 39013 age-matched reference individuals from the general population. Cox and flexible parametric models were used to examine associations with patient, tumor and treatment characteristics, accounting for time-dependent effects.

Results: Over a median follow-up of 7.2 years, 426 breast cancer patients experienced a VTE event (cumulative incidence = 5.1%). VTE incidence was 3-fold increased (HR = 3.28; 95% CI = 2.87-3.74) compared to the general population and was highest 6 months after diagnosis (HR = 8.62; 95% CI = 6.56-11.33) with a sustained increase in risk thereafter (HR at 5 years = 2.19; 95% CI = 1.80-2.67).

Independent predictors of VTE were older age, being overweight, pre-existing VTE, comorbid disease, tumor size > 40 mm, progesterone receptor (PR) negative status, > 4 affected lymph nodes, and receipt of chemo- and endocrine therapy. The impact of chemotherapy was limited to early-onset VTE, while comorbid and PR negative disease were more strongly associated with late-onset events.

Conclusions: Our study confirms the long-term risk of VTE in breast cancer patients, and identifies a comprehensive set of clinical risk predictors. Temporal associations with patient, tumor and treatment characteristics inform about the time-dependent etiology of VTE.

Key words: breast cancer, epidemiology, venous thromboembolism, predictors, time-dependent risk modeling.

Introduction

Venous thromboembolism (VTE) is a major health problem affecting ~1-2 per 1000 individuals per year^{1,2}. Breast cancer patients are at 3- to 4-fold increased risk of developing VTE compared to women without cancer^{3,4}. Although VTE risk is relatively low in breast cancer patients compared to other cancer populations, long-term consequences in terms of morbidity^{5,6} and quality of life⁷ are substantial, especially for non-metastatic patients who have a rather good prognosis. Moreover, as one of the most common cancers, breast cancer contributes to a large number of cancer-related VTE cases and associated healthcare costs⁸.

Several studies have examined the incidence of VTE in breast cancer patients^{3,4,9,10}, all showing an excess risk shortly after diagnosis, but with a potential sustained increase in risk thereafter⁴. The risk of VTE increases with advanced clinical stages^{3,4,9} and randomized clinical trials (RCTs) have reported higher VTE rates during treatment with chemo- and endocrine therapy¹¹⁻¹³. Few studies, however, have assessed the independent contribution of tumor, treatment and other patient-related factors to VTE risk and little is known about predictors of early vs. late-onset events. Chemotherapy, for instance, has been suggested to influence short-term risk only^{10,14,15}, while tumor-specific factors associated with locoregional recurrence and distant metastasis^{16,17} may have a larger impact on long-term VTE risk, given the close interrelation between cancer progression and activation of the coagulation system.^{18,19} Identification of time-dependent risk factors is also relevant for the timing of preventive strategies, including early detection and short-term prophylaxis covering periods of highest risk.

In the present study we aimed to assess the risk and predictors of VTE in a population-based breast cancer cohort, by time since diagnosis. We studied the impact of routinely available clinical parameters, which can easily be incorporated into future risk stratification models.

Methods

Breast cancer cohort

Our source population comprised women diagnosed with primary invasive breast cancer between 2001 and 2008 in the Stockholm-Gotland region, as identified through the Stockholm Breast Cancer Register. The register has about 99% completeness and provides detailed information on tumor/treatment characteristics, and routine follow-up on locoregional recurrences and distant metastases²⁰. For the present study, we included patients diagnosed at age 25-75 years without distant metastasis at diagnosis (N = 8338). The cohort was linked by the unique personal identity number to the Cancer Register, Patient Register, Cause of Death Register and Total Population Register and follow-up was complete until 31 December 2012. We also performed linkage with the Prescribed Drug Register which contains data on all drugs dispensed from Swedish pharmacies from July 2005 onward. Self-reported information on weight and height [from which body mass index (BMI) was calculated] was available for a subset of 4687 patients who were invited in 2009 to participate in Libro-1, a study aimed at identifying risk and prognostic factors for breast cancer²¹. The study was approved by the Regional Ethical Review Board in Stockholm and all Libro-1 participants gave written informed consent.

Age-matched reference individuals

We assembled a comparison cohort based on the Total Population Register with cross-linkage to the Cancer Register, Patient Register, Cause of Death Register and Prescribed Drug Register as described above. The Total Population Register contains information on area of residence, vital status and dates of immigration and emigration for all Swedish residents. For each patient, we randomly sampled up to 5 women from the general population living in the Stockholm-Gotland region matched on birth year. Each reference individual was alive and free of breast cancer on the date of the matched patient's diagnosis (the index date). In total, 2677 women could not be matched to an index case, resulting in 39013 age-matched reference individuals. The latest cross-linkage of the Total Population Register to the different health registers was performed at 31 December 2010. Hence, follow-up was shorter in

matched cohort (breast cancer cohort and age-matched population cohort) than case-only (breast cancer cohort) analyses.

Venous thromboembolism

VTE events were identified through the Patient Register, which has nationwide coverage since 1987 and includes all inpatient hospitalizations in Sweden²². Since 2001, Swedish counties are also obliged to report hospital-based outpatient physician visits. VTE was defined as a diagnosis of deep vein thrombosis (DVT) or pulmonary embolism (PE) according to International Classification of Diseases codes as described previously²³ (**Supplementary Table 1**). The definition of DVT included diagnoses of lower and upper extremity thrombosis, as well as thrombosis in other specified veins including those of the thorax and abdomen.

Clinical characteristics

The following variables were extracted from the Stockholm Breast Cancer Register: tumor size, histological grade, estrogen/progesterone receptor (ER/PR) status, number of affected lymph nodes, type of surgery, radiotherapy, and receipt of chemo/endocrine therapy, all referring to the date of the primary cancer. Tumor and treatment information was essentially complete (< 5% of the patients had missing data), except for ER (7.3% missing) and PR status (8.9% missing). Grade was routinely collected from 2004 onwards and was missing for 39.3% of the patients. VTE events prior to the index date were identified through the Patient Register. Comorbid conditions were also extracted and summarized into the Charlson Comorbidity Index score.²⁴

Statistical analyses

We first assessed the risk of VTE in breast cancer patients as compared to age-matched reference individuals in matched cohort analysis. Numbers of person-years at risk were calculated from the breast cancer diagnosis and corresponding index date in the age-matched reference individuals until the date of the first VTE event, death, emigration, or 31 December 2010 whichever came first.

Cumulative incidences were visualized using Kaplan-Meier plots. Because of the time-dependent risk pattern, time-specific hazard ratios were estimated using flexible parametric survival models (FPM) ²⁵ with time since index date as underlying time scale. FPM uses a restricted cubic spline function to model the baseline hazard and is similar to the Cox proportional hazards model in that it provides a hazard ratio (HR) as measure of association. An advantage of FPM is that non-proportional hazards can easily be fitted by adding a spline for the interaction with time.

Next, we studied the impact of patient, tumor and treatment characteristics in case only analysis using Cox proportional hazards models. Person-time was defined as described above starting from the date of diagnosis, but with extended follow-up until 31 December 2012, as this analysis concerned breast cancer patients only. Proportional hazards assumptions were verified using tests for Schoenfeld residuals and in case of non-proportionality, time-dependent effects were modelled using FPM. We conducted three analyses to study the impact of each clinical parameter: 1. a model adjusting for age at diagnosis only; 2. three grouped models, including respectively all patient, tumor and treatment characteristics with additional adjustment for age at diagnosis, and 3. a multivariable model including all variables.

Three sensitivity analyses were performed. First, we repeated the matched cohort analysis using a more refined outcome definition in patients diagnosed after July 2005. To increase specificity, we only included VTE diagnoses followed by a prescription of vitamin K antagonists (ATC = B01AA) or heparins (ATC = B01AB) within 90 days or death within 30 days of the VTE event. A second sensitivity analysis was carried out to evaluate the long-term risk associated with the first primary tumor. For this analysis, person-time was additionally censored at locoregional recurrence, distant metastasis and diagnosis of a new primary breast cancer. Finally, we repeated all analyses in patients without pre-existing VTE.

Results

Descriptive characteristics of the breast cancer and age-matched population cohort are summarized in **Table 1**. Mean age at breast cancer diagnosis was 57.1 years and 426 patients experienced a VTE event during a median follow-up of 7.2 years. Mean age at VTE diagnosis was lower in breast cancer

patients (62.0 years) than in age-matched reference individuals (65.3 years). The 1, 2 and 5-year cumulative incidences of VTE in the breast cancer cohort were 2.0, 2.5 and 4.0%. Corresponding cumulative incidences in the age-matched population cohort were 0.3, 0.5 and 1.1% respectively (**Figure 1**). VTE rates were 7.9 per 1000 person-years for the breast cancer cohort and 2.4 per 1000 person-years in the age-matched reference individuals (**Supplementary Table 2**).

Overall, breast cancer patients experienced a 3-fold increased risk of VTE compared to the age-matched reference individuals [HR (95% CI) = 3.28; 2.87-3.74]. The relative risk of VTE was highest the first 6 and 12 months after diagnosis [HR (95% CI) = 8.62 (6.56-11.33) and 4.46 (3.52-5.66) respectively], and was more or less constant thereafter [HR (95% CI) at 2, 5, 7 years = 2.01 (1.50-2.70), 2.19 (1.80-2.67) and 2.26 (1.70-2.99) respectively] (**Table 2**). Separate analyses for DVT and PE resulted in HRs similar to those for VTE.

Table 3 lists the HRs for VTE by patient, tumor and treatment characteristics. Older age at diagnosis, BMI ≥ 25 kg/m², pre-existing VTE, tumor size > 40 mm, progesterone receptor (PR) negative disease, > 4 affected lymph nodes and chemotherapy were all associated with an increase in VTE risk in multivariable analyses. Models with stepwise adjustment showed that the impact of patient, tumor and treatment characteristics was robust, except for comorbidities and breast-conserving surgery which showed no association with VTE after multivariable adjustment.

The proportional hazards assumption was not met for comorbid disease, PR status and chemotherapy (**Figure 2, Supplementary Table 3**). While not reaching significance in terms of overall VTE risk, comorbid conditions were associated with late-onset events occurring 5 years after diagnosis.

Similarly, PR-negative tumors showed a stronger association with late-onset VTE. Chemotherapy, on the other hand, was only associated with events occurring within the first year of diagnosis.

No major difference in risk was observed between chemotherapy alone and combined chemo- and endocrine therapy. VTE risks were also similar when comparing tamoxifen versus aromatase inhibitors (AIs) alone, but AI use tended to show a stronger association with VTE when combined with chemotherapy (**Supplementary Table 4**).

Sensitivity analyses using a more refined definition generated somewhat lower VTE rates, but HRs consistent with those observed in the main analysis (**Supplementary Table 5**). The long-term VTE

risk remained present when censoring person-time at disease recurrence and new breast cancer diagnoses: i.e. the risk associated with the primary tumor was only slightly attenuated 7 years after diagnosis with a HR of 1.76 (**Supplementary Table 6**). Relative risks of VTE were also similar in analyses excluding patients with a VTE history (**Supplementary Table 7**), as were associations with individual patient, tumor and treatment characteristics (**Supplementary Table 8**).

Discussion

In this population-based study, we demonstrate that breast cancer patients are at highest VTE risk within the first year of diagnosis, but remain at 2-fold increased risk for many years after. Older age at diagnosis, being overweight, VTE history, comorbid conditions, a larger tumor size, PR-negative disease, lymph node involvement, and receipt of chemo- and endocrine therapy were all independent predictors of VTE in breast cancer patients. The impact of most predictors was constant over time except for chemotherapy, comorbid disease and PR status, which showed differential associations with early and late-onset events.

Consistent with previous reports^{3,4,9}, the incidence of VTE was highest in the first 6 to 12 months after diagnosis. The observed absolute risks are also similar to recent estimates reported by Walker et al.¹⁰ incorporating in- and outpatient diagnoses. Long-term risk data, however, are scarce, although a Danish study⁴ previously indicated a potential sustained increase in risk with HRs being significant beyond 2 years of diagnosis. Our study is the first to confirm the long-term risk of VTE in breast cancer patients, with relative risks remaining 2-fold increased for at least 7 years. Importantly, we could address the impact of the primary tumor, as recurrent disease and treatment can result in inflated long-term risk estimates.

The strong impact of chemotherapy on VTE risk is consistent with previous reports showing an excess risk in chemotherapy-treated patients, independent of cancer site and stage^{4,9,26,27}. Several mechanisms have been proposed for the high thrombogenic potential of chemotherapy, including damage to endothelial cell walls, decreased fibrinolytic activity of the blood and use of venous catheters for chemotherapy administration^{28,29}. In line with RCT data^{12,30} and observational data by Walker et al.¹⁰, the effect of chemotherapy was limited to the period of active treatment. A higher VTE incidence was also found with endocrine therapy. Trials comparing tamoxifen versus AIs have reported higher VTE rates with tamoxifen use¹³. In this observational study, no difference by type of

endocrine treatment was found; although there was some tendency of a higher VTE risk with AI use in chemotherapy-treated patients. This could be the consequence of a higher baseline risk in postmenopausal AI users¹⁰ and/or preferential prescriptions of AIs to patients for whom tamoxifen is contraindicated because of a personal or family history of thrombosis, or other VTE risk factors³¹. We also note the particular high risk of VTE in AI users who received chemotherapy, although the underlying mechanism is unclear and requires further investigation.

Markers of tumor aggressiveness have previously been linked to VTE risk^{3,10}, but little is known about the independent contribution of tumor-specific factors after accounting for treatment effects. We found a positive association with tumor size and PR negative disease in multivariable analyses. Since both factors are established markers of disease recurrence^{16,17}, these data agree with a close interplay between tumor progression and prothrombotic processes^{18,19}. The lack of association with ER status can be explained by the adverse effect of endocrine therapy, which might have offset a protective effect of ER-positive disease. Interestingly, the impact of PR-negative tumors was stronger for late-onset VTE. Although the nature of this temporal association remains to be determined, PR absence has been associated with resistance to endocrine therapy³². In addition, ER-positive/PR-negative tumors are characterized by more aggressive features and worse outcomes compared to ER-positive/PR-positive tumors³³. Previous studies have also reported increased VTE rates with lymph node involvement^{3,10}, but the predictive value of this tumor characteristic has been questioned due to lack of adjustment for chemotherapy³⁴. Despite the slight attenuation in multivariable analyses, extensive nodal involvement remained an independent predictor of VTE in our study.

We further observed independent associations with older age and increasing BMI, which have been reported previously^{3,4,10}. Comorbid disease also predicted VTE risk, but only 5 years after diagnosis. Since short-term VTE risk is dominated by breast cancer treatment, this could have masked an independent effect of comorbid disease early after disease onset. The lack of a gradual increase in VTE risk with increasing comorbidity burden suggests that specific conditions are likely to have a

stronger influence than an aggregated score, which could be evaluated further in future larger scale studies.

Thromboprophylaxis leads to a reduction in VTE incidence in cancer patients^{35,36}, but is not recommended on a routine basis in breast cancer patients due to the low baseline risk and side effect associated with thromboprophylaxis, namely bleeding³⁷. Selected high-risk patients, however, could potentially benefit from prophylactic or early detection measures. Several risk prediction models have been developed for identifying high-risk patients, of which the Khorana model is the most established³⁸. Although this model includes cancer site, it does not account for cancer-specific risk factors. Since VTE risk profiles differ by cancer site^{10,39}, cancer specific models are needed in order to optimize risk assessment. The clinical predictors identified by our study may thus facilitate future risk stratification in the breast cancer setting. Further studies, however, are needed to assess the added value of other laboratory parameters, such as leukocytosis and thrombocytosis, on top of the risk predictors identified here.

The present study is characterized by a large population-based design and linkage to register-based data which minimizes information bias. Other strengths are the detailed information on patient, tumor and treatment characteristics and use of FPM for capturing time-dependent effects. We also acknowledge several limitations. Although the Patient Register has high validity for cardiovascular diagnoses including VTE, misclassification may have occurred. In agreement with previous reports⁴⁰,⁴¹, ~89% of all cases were confirmed using prescription and death records. Sensitivity analyses showed no evidence of differential misclassification, despite the somewhat lower absolute rates. Second, outpatient diagnoses are only registered from 2001 onward. For this reason, some patients treated as disease-free may have had a VTE history at diagnosis. Risk estimates were, however, not materially different after excluding patients with pre-existing VTE. Third, BMI was the only variable assessed after diagnosis. We cannot rule out post-diagnostic changes in BMI, but class effects are considered unlikely. The observed association with overweight is also consistent with previous data¹⁰.

Finally, it should be noted that cancer patients are subject to increased medical surveillance, resulting in inflated HRs close to diagnosis. This bias is unlikely to extend beyond 1 year of follow-up, and cannot explain the long-term risk pattern observed.

In conclusion, our study confirms the long-term VTE risk in breast cancer patients, and identifies a comprehensive set of clinical risk predictors, which may facilitate future risk stratification and prevention efforts. Our findings also provide novel insights into the time-dependent etiology of VTE in breast cancer patients, underscoring the importance of early and late-onset differentiation in VTE risk prediction.

References

1. Silverstein MD, Heit JA, Mohr DN, Petterson TM, O'Fallon WM, Melton LJ,3rd. Trends in the incidence of deep vein thrombosis and pulmonary embolism: A 25-year population-based study. *Arch Intern Med.* 1998;158:585-593.
2. Beckman MG, Hooper WC, Critchley SE, Ortel TL. Venous thromboembolism: A public health concern. *Am J Prev Med.* 2010;38:S495-501.
3. Chew HK, Wun T, Harvey DJ, Zhou H, White RH. Incidence of venous thromboembolism and the impact on survival in breast cancer patients. *J Clin Oncol .* 2007;25:70-76.
4. Cronin-Fenton DP, Sondergaard F, Pedersen LA et al. Hospitalisation for venous thromboembolism in cancer patients and the general population: A population-based cohort study in denmark, 1997-2006. *Br J Cancer.* 2010;103:947-953.
5. Prandoni P, Lensing AW, Piccioli A et al. Recurrent venous thromboembolism and bleeding complications during anticoagulant treatment in patients with cancer and venous thrombosis. *Blood.* 2002;100:3484-3488.
6. Hutten BA, Prins MH, Gent M, Ginsberg J, Tijssen JG, Buller HR. Incidence of recurrent thromboembolic and bleeding complications among patients with venous thromboembolism in relation to both malignancy and achieved international normalized ratio: A retrospective analysis. *J Clin Oncol.* 2000;18:3078-3083.
7. Kahn SR, Ducruet T, Lamping DL et al. Prospective evaluation of health-related quality of life in patients with deep venous thrombosis. *Arch Intern Med.* 2005;165:1173-1178.

8. Elting LS, Escalante CP, Cooksley C et al. Outcomes and cost of deep venous thrombosis among patients with cancer. *Arch Intern Med.* 2004;164:1653-1661.
9. Blom JW, Vanderschoot JP, Oostindier MJ, Osanto S, van der Meer FJ, Rosendaal FR. Incidence of venous thrombosis in a large cohort of 66,329 cancer patients: Results of a record linkage study. *J Thromb Haemost .* 2006;4:529-535.
10. Walker AJ, West J, Card TR, Crooks C, Kirwan CC, Grainge MJ. When are breast cancer patients at highest risk of venous thromboembolism: A cohort study using english healthcare data. *Blood.* 2015;127:849-857.
11. Fisher B, Dignam J, Wolmark N et al. Tamoxifen and chemotherapy for lymph node-negative, estrogen receptor-positive breast cancer. *J Natl Cancer Inst.* 1997;89:1673-1682.
12. Levine MN, Gent M, Hirsh J et al. The thrombogenic effect of anticancer drug therapy in women with stage II breast cancer. *N Engl J Med.* 1988;318:404-407.
13. Amir E, Seruga B, Niraula S, Carlsson L, Ocana A. Toxicity of adjuvant endocrine therapy in postmenopausal breast cancer patients: A systematic review and meta-analysis. *J Natl Cancer Inst.* 2011;103:1299-1309.
14. Pritchard KI, Paterson AH, Paul NA, Zee B, Fine S, Pater J. Increased thromboembolic complications with concurrent tamoxifen and chemotherapy in a randomized trial of adjuvant therapy for women with breast cancer. national cancer institute of canada clinical trials group breast cancer site group. *J Clin Oncol.* 1996;14:2731-2737.
15. Lee AY, Levine MN. Venous thromboembolism and cancer: Risks and outcomes. *Circulation.* 2003;107:117-21.

16. Heimann R, Hellman S. Clinical progression of breast cancer malignant behavior: What to expect and when to expect it. *J Clin Oncol.* 2000;18:591-599.
17. Sestak I, Cuzick J. Markers for the identification of late breast cancer recurrence. *Breast Cancer Res.* 2015;17:10-015-0516-0.
18. Rickles FR, Patrierno S, Fernandez PM. Tissue factor, thrombin, and cancer. *Chest.* 2003;124:58S-68S.
19. Lal I, Dittus K, Holmes CE. Platelets, coagulation and fibrinolysis in breast cancer progression. *Breast Cancer Res.* 2013;15:207.
20. Colzani E, Liljegren A, Johansson AL et al. Prognosis of patients with breast cancer: Causes of death and effects of time since diagnosis, age, and tumor characteristics. *J Clin Oncol.* 2011;29:4014-4021.
21. Holm J, Humphreys K, Li J et al. Risk factors and tumor characteristics of interval cancers by mammographic density. *J Clin Oncol.* 2015;33:1030-1037.
22. Ludvigsson JF, Andersson E, Ekbom A et al. External review and validation of the swedish national inpatient register. *BMC Public Health.* 2011;11:450-2458-11-450.
23. Holmqvist ME, Neovius M, Eriksson J et al. Risk of venous thromboembolism in patients with rheumatoid arthritis and association with disease duration and hospitalization. *JAMA.* 2012;308:1350-1356.
24. Charlson ME, Pompei P, Ales KL, MacKenzie CR. A new method of classifying prognostic comorbidity in longitudinal studies: Development and validation. *J Chronic Dis.* 1987;40:373-383.

25. Royston P, Parmar MK. Flexible parametric proportional-hazards and proportional-odds models for censored survival data, with application to prognostic modelling and estimation of treatment effects. *Stat Med.* 2002;21:2175-2197.
26. Khorana AA, Francis CW, Culakova E, Kuderer NM, Lyman GH. Frequency, risk factors, and trends for venous thromboembolism among hospitalized cancer patients. *Cancer.* 2007;110:2339-2346.
27. Otten HM, Mathijssen J, ten Cate H et al. Symptomatic venous thromboembolism in cancer patients treated with chemotherapy: An underestimated phenomenon. *Arch Intern Med.* 2004;164:190-194.
28. Haddad TC, Greeno EW. Chemotherapy-induced thrombosis. *Thromb Res.* 2006;118:555-568.
29. Kirwan CC, McDowell G, McCollum CN, Byrne GJ. Incidence of venous thromboembolism during chemotherapy for breast cancer: Impact on cancer outcome. *Anticancer Res.* 2011;31:2383-2388.
30. Clahsen PC, van de Velde CJ, Julien JP, Floiras JL, Mignolet FY. Thromboembolic complications after perioperative chemotherapy in women with early breast cancer: A european organization for research and treatment of cancer breast cancer cooperative group study. *J Clin Oncol.* 1994;12:1266-1271.
31. Lycette JL, Luoh SW, Beer TM, Deloughery TG. Acute bilateral pulmonary emboli occurring while on adjuvant aromatase inhibitor therapy with anastrozole: Case report and review of the literature. *Breast Cancer Res Treat.* 2006;99:249-255.

32. Bardou VJ, Arpino G, Elledge RM, Osborne CK, Clark GM. Progesterone receptor status significantly improves outcome prediction over estrogen receptor status alone for adjuvant endocrine therapy in two large breast cancer databases. *J Clin Oncol*. 2003;21:1973-1979.
33. Arpino G, Weiss H, Lee AV et al. Estrogen receptor-positive, progesterone receptor-negative breast cancer: Association with growth factor receptor expression and tamoxifen resistance. *J Natl Cancer Inst*. 2005;97:1254-1261.
34. Ferroni P, Riondino S, Guadagni F, Roselli M. Impact of chemotherapy on venous thromboembolism: Comment to: Regional lymph node metastases are a strong risk factor for venous thromboembolism: Results from the vienna cancer and thrombosis study. *Haematologica*. 2013;98:e153-4.
35. Agnelli G, George DJ, Kakkar AK et al. Semuloparin for thromboprophylaxis in patients receiving chemotherapy for cancer. *N Engl J Med*. 2012;366:601-609.
36. Agnelli G, Gussoni G, Bianchini C et al. Nadroparin for the prevention of thromboembolic events in ambulatory patients with metastatic or locally advanced solid cancer receiving chemotherapy: A randomised, placebo-controlled, double-blind study. *Lancet Oncol*. 2009;10:943-949.
37. Lyman GH, Bohlke K, Khorana AA et al. Venous thromboembolism prophylaxis and treatment in patients with cancer: American society of clinical oncology clinical practice guideline update 2014. *J Clin Oncol*. 2015;33:654-656.
38. Khorana AA, Kuderer NM, Culakova E, Lyman GH, Francis CW. Development and validation of a predictive model for chemotherapy-associated thrombosis. *Blood*. 2008;111:4902-4907.

39. Walker AJ, West J, Card TR, Humes DJ, Grainge MJ. Variation in the risk of venous thromboembolism in people with colorectal cancer: A population-based cohort study from england. *J Thromb Haemost.* 2014;12:641-649.
40. Rosengren A, Freden M, Hansson PO, Wilhelmsen L, Wedel H, Eriksson H. Psychosocial factors and venous thromboembolism: A long-term follow-up study of swedish men. *J Thromb Haemost.* 2008;6:558-564.
41. Schulman S, Lindmarker P. Incidence of cancer after prophylaxis with warfarin against recurrent venous thromboembolism. duration of anticoagulation trial. *N Engl J Med.* 2000;342: 1953-1958.

Figure legends

Figure 1. Cumulative incidence of VTE in breast cancer patients as compared to age-matched reference individuals from the general population.

Abbreviations: CI = confidence interval; HR = hazard ratio. Cumulative incidence estimates as obtained with Kaplan-Meier survival analysis with time since index date as underlying time scale.

Figure 2. Time-dependent effects of comorbidity, PR-negative disease and chemotherapy on VTE risk in breast cancer patients.

Abbreviations: CI = confidence interval; HR = hazard ratio. Time-dependent hazard ratios as estimated with flexible parametric survival models with time since diagnosis as underlying time scale: A = comorbid conditions (REF = no comorbid disease); B = Progesterone receptor (PR) status (REF = PR-positive tumors); C = chemotherapy (REF = no chemotherapy). All hazard ratios are multivariable adjusted.

Figure 1. Cumulative incidence of VTE in breast cancer patients as compared to age-matched reference individuals from the general population

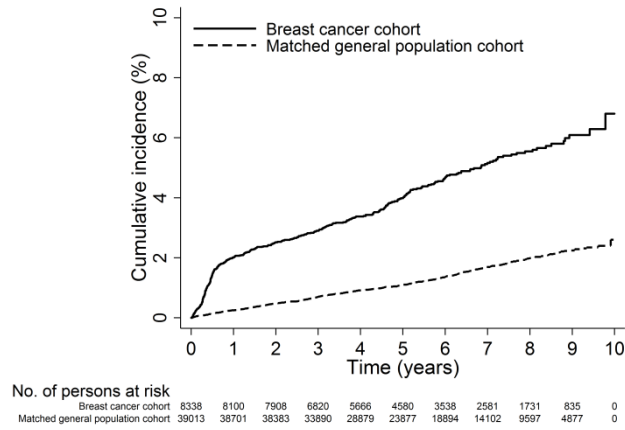


Figure 2. Time-dependent effects of comorbidity, PR-negative disease and chemotherapy on VTE risk in breast cancer patients.

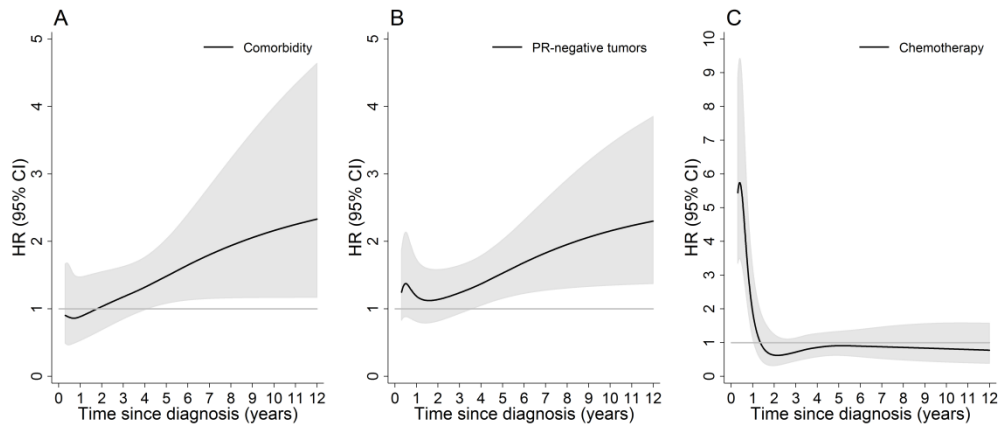


Table 1. Characteristics of the study population.

| Characteristics | Breast cancer cohort (N = 8338) * | Matched population cohort (N = 39013) |
|---|--|--|
| Age at diagnosis (years) | | |
| Mean (SD) | 57.1 (10.3) | 57.3 (10.2) |
| Min-Max | 25-75 | 25-75 |
| Years of follow-up, median (IQR) | 7.2 (4.3) / 5.3 (4.1) | 5.9 (4.0) |
| No. of events: | | |
| VTE | 426 / 364 | 555 |
| Pulmonary embolism | 179 / 141 | 227 |
| Deep vein thrombosis | 262 / 235 | 358 |
| Age at VTE diagnosis (years), mean (SD) | 62.9 (10.4) / 62.0 (10.1) | 65.3 (9.2) |

Abbreviations: CI = confidence interval; ICD = international classification of diseases; SD = standard deviation; IQR = interquartile range; VTE = venous thromboembolism * For the Stockholm-Gotland breast cancer cohort, descriptive statistics of incident VTE are given for the entire follow-up in case only analysis (until 31 December 2012), and the end of follow-up in matched cohort analysis (until 31 December 2010) Descriptive statistics of incident VTE in the age-matched population cohort are given until 31 December 2010 (matched cohort analysis).

Table 2. Relative risk of venous thromboembolism in breast cancer patients compared to age-matched reference individuals from the general population, overall and at specific time points after the index date.

| | | HR (95% CI) | | | | | | |
|---------------------------|---------------|--------------------|--------------------|------------------|-------------------|-------------------|-------------------|-------------------|
| | | Overall | At 6 months | At 1 year | At 2 years | At 5 years | At 7 years | At 9 years |
| | N total/VTE * | | | | | | | |
| Matched population cohort | 39013/555 | REF (1.00) | REF (1.00) | REF (1.00) | REF (1.00) | REF (1.00) | REF (1.00) | REF (1.00) |
| Breast cancer cohort | 8338/364 | 3.28 (2.87-3.74) | 8.62 (6.56-11.33) | 4.46 (3.52-5.66) | 2.01 (1.50-2.70) | 2.19 (1.80-2.67) | 2.26 (1.70-2.99) | 2.19 (1.55-3.09) |
| | N total/DVT * | | | | | | | |
| Matched population cohort | 39013/358 | REF (1.00) | REF (1.00) | REF (1.00) | REF (1.00) | REF (1.00) | REF (1.00) | REF (1.00) |
| Breast cancer cohort | 8338/235 | 3.25 (2.75-3.83) | 9.81 (6.70-13.81) | 3.68 (2.64-5.13) | 1.69 (1.17-2.43) | 2.07 (1.58-2.71) | 2.24 (1.54-3.25) | 2.22 (1.42-3.47) |
| | N total/PE * | | | | | | | |
| Matched population cohort | 39013/227 | REF (1.00) | REF (1.00) | REF (1.00) | REF (1.00) | REF (1.00) | REF (1.00) | REF (1.00) |
| Breast cancer cohort | 8338/141 | 3.09 (2.50-3.81) | 7.21 (4.62-11.26) | 4.68 (3.26-6.71) | 2.55 (1.67-3.87) | 2.25 (1.70-2.99) | 2.23 (1.48-3.37) | 2.12 (1.25-3.61) |

Abbreviations: HR = hazard ratio; CI = confidence interval; VTE = venous thromboembolism; DVT = deep vein thrombosis; PE = pulmonary embolism. Hazard ratios as estimated using flexible parametric survival models. Follow-up started from the breast cancer diagnosis and corresponding index date in the age-matched reference individuals and follow-up was complete until December 2010. * No. of incident VTE events is lower than in the Stockholm-Gotland breast cancer cohort with extended follow-up until December 2012.

Table 3. Association of patient, tumor and treatment characteristics with risk of venous thromboembolism risk in breast cancer patients.

| | N total/VTE | HR (95% CI) | | |
|----------------------------------|-------------|--------------------|--------------------|--------------------|
| | | Model 1 | Model 2 | Model 3 |
| Patient characteristics | | | | |
| Age at diagnosis (years) | | | | |
| < 50 | 1857/66 | REF (1.00) | REF (1.00) | REF (1.00) |
| 50-59 | 2639/119 | 1.21 (0.90-1.64) | 1.24 (0.91-1.67) | 1.35 (0.99-1.83) |
| 60-69 | 2875/174 | 1.73 (1.30-2.30) | 1.70 (1.28-2.26) | 1.98 (1.47-2.66) |
| > 69 | 967/67 | 2.11 (1.50-2.97) | 1.79 (1.27-2.54) | 2.17 (1.51-3.14) |
| BMI (kg/m ²) | | | | |
| <25 | 2546/94 | REF (1.00) | REF (1.00) | REF (1.00) |
| 25-30 | 1557/79 | 1.38 (1.02-1.86) | 1.38 (1.02-1.86) | 1.37 (1.01-1.85) |
| > 30 | 584/37 | 1.71 (1.17-2.50) | 1.64 (1.11-2.40) | 1.60 (1.09-2.35) |
| Pre-existing VTE | | | | |
| No | 8189/382 | REF (1.00) | REF (1.00) | REF (1.00) |
| Yes | 149/44 | 11.06 (8.08-15.14) | 10.69 (7.80-14.66) | 11.56 (8.39-15.92) |
| Comorbidities * | | | | |
| None | 7385/360 | REF (1.00) | REF (1.00) | REF (1.00) |
| 1 | 514/38 | 1.42 (1.02-2.00) | 1.27 (0.90-1.77) | 1.28 (0.91-1.80) |
| ≥ 2 | 439/28 | 1.30 (0.88-1.92) | 1.14 (0.77-1.69) | 1.16 (0.78-1.73) |
| Tumor characteristics | | | | |
| Tumor size (mm) | | | | |
| ≤ 10 | 2086/93 | REF (1.00) | REF (1.00) | REF (1.00) |
| 11-20 | 3555/174 | 1.14 (0.88-1.46) | 1.14 (0.88-1.49) | 1.08 (0.83-1.41) |
| 21-40 | 1924/106 | 1.37 (1.04-1.81) | 1.20 (0.88-1.63) | 1.13 (0.83-1.55) |
| >40 | 514/43 | 2.22 (1.55-3.20) | 1.71 (1.15-2.53) | 1.55 (1.02-2.35) |
| Tumor grade (Elston) | | | | |
| Low | 963/38 | REF (1.00) | REF (1.00) | REF (1.00) |
| Moderate | 2557/119 | 1.19 (0.83-1.71) | 1.03 (0.71-1.49) | 0.95 (0.65-1.38) |
| High | 1539/73 | 1.35 (0.91-2.00) | 1.01 (0.66-1.54) | 0.85 (0.56-1.31) |
| Estrogen receptor status | | | | |
| Positive | 6353/313 | REF (1.00) | REF (1.00) | REF (1.00) |
| Negative | 1376/76 | 1.22 (0.95-1.57) | 0.96 (0.71-1.31) | 1.06 (0.66-1.70) |
| Progesterone receptor status * | | | | |
| Positive | 5176/236 | REF (1.00) | REF (1.00) | REF (1.00) |
| Negative | 2419/143 | 1.38 (1.12-1.70) | 1.32 (1.03-1.70) | 1.33 (1.03-1.71) |
| No. of affected lymph nodes | | | | |
| 0 | 5033/225 | REF (1.00) | REF (1.00) | REF (1.00) |
| 1-4 | 2241/113 | 1.21 (0.97-1.52) | 1.16 (0.92-1.47) | 0.99 (0.76-1.28) |
| > 4 | 714/67 | 2.53 (1.92-3.33) | 2.18 (1.62-2.94) | 1.73 (1.21-2.46) |
| Treatment characteristics | | | | |
| Surgery | | | | |
| Total mastectomy | 3205/178 | REF (1.00) | REF (1.00) | REF (1.00) |
| Breast-conserving | 5014/242 | 0.81 (0.67-0.98) | 0.79 (0.62-1.01) | 1.08 (0.81-1.45) |
| Radiotherapy | | | | |
| No | 1882/89 | REF (1.00) | REF (1.00) | REF (1.00) |
| Yes | 6318/330 | 1.16 (0.92-1.46) | 1.32 (0.99-1.76) | 1.07 (0.79-1.47) |
| Chemo/endocrine therapy * | | | | |
| None | 355/11 | REF (1.00) | REF (1.00) | REF (1.00) |
| Endocrine only | 4475/208 | 1.60 (0.87-2.94) | 1.59 (0.87-2.92) | 1.86 (0.94-3.72) |
| Chemo only | 1119/66 | 2.77 (1.45-5.26) | 2.58 (1.35-4.93) | 2.42 (1.24-4.73) |
| Chemo plus endocrine | 2230/131 | 2.67 (1.43-4.97) | 2.45 (1.31-4.58) | 2.74 (1.33-5.63) |

Abbreviations: BMI = body mass index, CI = confidence interval; HR = hazard ratio; VTE = venous thromboembolism. Hazard ratios as estimated from Cox proportional hazard models with time since diagnosis as underlying time scale. Model 1: adjusted for age at diagnosis; Model 2: grouped models including respectively all patient, tumor and treatment characteristics with additional adjustment for age at diagnosis; Model 3: multivariable adjusted models including all variables listed in the table. * Variables not meeting the proportional hazards assumption.